

# ACCESSORIES CATALOG

- Flexible - ST
  - Union Arch Flexible - DUT
  - Standard Flanged Connector - SM
  - Single & Double Arch Flexible - SSP & DSP
  - Air Vent - MV
  - Air Vent - AA
  - Pressure And/Or Temperature Ports
  - Multi Function Valve
  - Suction Diffuser
  - LCTY
  - LYF
- FLEXIBLES
- HYDRONIC ACCESSORIES
- BALANCING VALVES & MULTI FONCTION VALVES
- STRAINERS

## ALWAYS MORE



# About us

**CENTRIFUGAL PUMPS | TANKS  
COMPLETE CHILLER PACKAGE**

Flo Fab is a leader in the pumps industry. In-line Pumps, In-line Circulators, End Suction Base Mounted, Horizontal Closed Coupled End Suction, Horizontal Closed Coupled Stainless Steel Pump, Multi Stage, Submersible Effluent & Sewage, Condensate, Boiler Feed Closed Coupled, Vertical Turbine, Split Case, 16 Position Single Suction, Flo Fab has it and so much more. All Flo Fab pump products are made with a resin pattern which results in an improved exterior finish, smooth interior passage, and higher efficiency pumps. All pumps are factory tested and a certified performance test is available when requested by the consultant.



**OVER THE YEARS, FLO FAB HAS GROWN AND DEVELOPED A FULL LINE OF PUMPS FOR DIFFERENT MARKET SEGMENT. WE OFFER A FULL LINE OF HVAC, PLUMBING, INDUSTRIAL, MUNICIPAL AND RELATED ACCESSORIES.**

We are proud to offer a wide range of products directly from one manufacturer. This includes pump, integrated skids package, tanks, heat exchangers and hydronic accessories. As the one stop shop, each stakeholder is afforded economical savings, one source responsibility, best value for their investment and optimized total cost of the project.



All Flo Fab pump products are made with a resin pattern which results in an improved exterior finish, smooth interior passage, and higher efficiency pumps. All pumps are factory tested and we offer an optional performance test.



## 1981

Flo Fab was founded by Denis Gauvreau who created and developed the product line.

## 1990

Flo Fab sells its own line of pumps designed in Quebec. It all started in a small factory located in Laval.

## 2000

In 2000, Flo Fab has moved to a new factory of 28,000 sq. ft. in Bois-des-Filion.

## 2022

The boom in the construction industry allowed Flo Fab to have a great year despite the pandemic.

## 2020

The plant was expanded by another 37,000 sq. ft.

## 2020

Sales are up 40%

## 2014

Marc Gauvreau, son of the founder, acquired all the shares of the company.



# History

Flo Fab was established in 1981 by Denis Gauvreau who created and developed the products line and constantly being perfected by Marc Gauvreau, as well as by a team of professional engineers and designers. It's a combination of existing designs from several renowned products and the innovative ideas of a new generation professionals.

Through the years, Flo Fab has acquired several companies and service entities including : AQUA-PROFAB (ASME Tanks manufacturer), MÉNARD, LÉONARD ÉLECTRIQUE, PMA. , Furthermore Flo Fab purchased equipment, fabrication designs and patterns from IDEALCO, a manufacturer of shell and tube type heat exchangers.

The after sales services, sales, engineering, R&D, production, quality control, accounting and administration departments of all the above companies share the same location.

In December 2014, Marc Gauvreau, son of the founder, acquired all shares of The company. Flo Fab and is constantly investing in new state of the art innovations new product like the XRI series and Prefab Skid for Hydronic Heating & cooling system, pumping systems. This has allowed Flo Fab to retain competent and experienced staff of professionals with varied and specialized abilities that constantly work on improving our existing products and add new engineered solutions that exceeding customer's expectations .

Flo Fab has grown quite rapidly and now proudly offers of a wide range of products available directly from one manufacturer. This includes pumps & pump packages, tanks, heat exchangers & hydronic accessories. This allows each project stakeholders to enjoy economical savings, peace of mind, best value for their investment and optimized total cost of ownership.

## The company is experiencing, an impressive growth.

Magazine Quebec Enterprise, volume 63  
Text by Guy Hébert



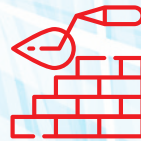
### MANUFACTURE

When Denis Gauvreau founded Flo Fab in 1981, the company was only doing the distribution of pumps and accessories HVAC (Heat, Ventilation and Air) Conditioning - HVAC for heating, ventilation and air conditioning). Later, under the governance of the second generation of Gauvreau, Flo Fab began manufacturing pumps. The manufacturing side of the company was born with the conception design of an accessory that measured the flow rate in water pipes. Today Flo Fab is now run by Marc Gauvreau, with the support of its employees competent at all levels and in all divisions.



### ITS OWN LINE

Since 1990, Flo Fab has been selling its own line of pumps designed right here at Quebec. It all started in a small factory located in Laval. In 2000, Flo Fab has moved to a new factory of 28,000 sq. ft. in Bois-des-Filion, which has even been enlarged by another 37,000 ft2 in 2020



### CONSTRUCTION

During these years, Flo Fab has developed pumps with stainless steel recessed impellers for its 4 900 H&V, 2600, XRI series Universal and ZDRI with double suction. Stainless steel impellers have longer life, regardless of either the applied liquid to be compared to the similar bronze impellers.



### DELIVERY

The company is now selling its product in the United States, in the Caribbean and in South America where demand is currently growing. Along the way, we also did the acquisition of a service center to to get to know the strengths and weaknesses of competitors' products. We are a small player in a very big market where we have to find creative solutions to counter protectionist policies like the Buy America Act. This is after the 2008 crisis that we have decided to improve our turnover in Canada», says Marc Gauvreau.



# Our Advantages



## Statistics

The boom in the construction industry has allowed Flo Fab to have a record year despite the pandemic in 2020 and already in 2021, sales are up 40%.



## A Pioneer in the Industry

Our Founder



## Our Employees

With about 50 employees including several engineers « on the mark » as the saying goes proudly Marc Gauvreau, and about forty of subcontractors, Flo Fab sees the future with optimism while recognizing that one of its biggest challenges is the retention of its staff



## Flo Fab expands to serve you better

The expansion of the facilities in Bois-des-Filion made it possible to reorganize the factory in order to increase the production rate. « The contractor handed over the keys to us on March 13, 2020, the day the pandemic forced the government to impose almost general confinement.



## « As soon as there is a crane. There is a pump »

« there are pumps everywhere and as soon as there is a crane, for example, there is a pump », specifies the president. The company also offers complete sets of boiler rooms.



# HYDRONIC ACCESSORIES

OTHER SIZE AND CONSTRUCTION MATERIAL AVAILABLE

## AVAILABLE

### FLEXIBLES



**01**  
FLEXIBLE - ST



**02**  
UNION ARCH  
FLEXIBLE - DUT



**03**  
STANDARD FLANGED  
CONNECTOR - SM



**04**  
SINGLE & DOUBLE  
ARCH FLEXIBLE -  
SSP & DSP

### STRAINERS



**11**  
SUCTION DIFFUSER  
ASDFF



**12**  
LCTY



**13**  
LYF

### HYDRONIC ACCESSORIES



**05**  
AIR VENT - MV

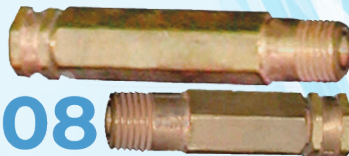


**06**  
AIR VENT - AA

### BALANCING VALVES & MULTIFUNCTION VALVE



**07**  
MULTIFUNCTION  
VALVE - MFV

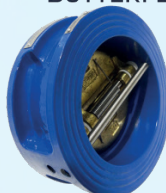


**08**  
PRESSURE AND/OR  
TEMPERATURE PORT

### BUTTERFLY VALVES



**09**  
BUTTERFLY VALVE  
BFVZ - L



**10**  
WAFER CHECK VALVE  
LSDDDB

**NSF**

**DISCOVER  
MORE**













**We are proud supplier for the following completed and on going projects :**



**Zermatt Lodge**  
Salt Lake City, UT, U.S.A.  
<https://zermattresort.com>



**Pier 17 South Street Seaport**  
South Street, New York, U.S.A  
[www.southstreetseaport.com](http://www.southstreetseaport.com)



**Pearl-Qatar**  
Doha, Qatar  
[www.thepearlqatar.com](http://www.thepearlqatar.com)



**Museum of Science and Industry**  
Tampa, Florida  
[www.mosi.org](http://www.mosi.org)  
Eng: Advance System Engineering



**Exchange Tower**  
Vancouver, B.C., Canada  
[www.theexchangebuilding.ca](http://www.theexchangebuilding.ca)



**Dar El Salam General Hospital**  
Cairo Governorate, Egypt



**Brock University Center**  
St. Catharines, Ontario, Canada  
<https://www.brocku.ca>



**520 Park Avenue**  
New York, U.S.A  
[www.520parkavenue.com](http://www.520parkavenue.com)



**Saudi Jeddah**  
Jeddah Saudi, Arabia  
[www.ports.gov.sa](http://www.ports.gov.sa)



**St-Joseph Women's Hospital**  
Tampa, Florida  
[www.sjbhealth.org](http://www.sjbhealth.org)  
Eng: Smith, Seckman, Reid Engineering



**Millenium Hilton**  
New-York City, NY, U.S.A  
[www.hilton.com](http://www.hilton.com)



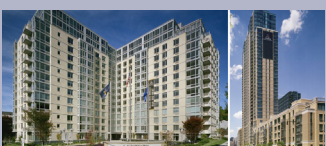
**Le M Lorraine**  
Lorraine, Quebec, Canada  
[www.lemlorraine.com](http://www.lemlorraine.com)



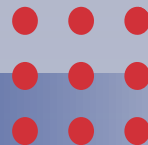
**Morton Plant North Bay Hospital**  
New Port Richey, Florida  
[www.mortonplant.com](http://www.mortonplant.com)  
Eng: IC Thomasson Association Incorporated



**Lowney**  
Montréal, Quebec, Canada  
<http://lelowney.prevel.ca>



**Sheepshead Residential Tower**  
Brooklyn, New York City, U.S.A.  
<http://www.sheepsheadbites.com>



**Sales and Service:**

Quebec, Canada  
Tel.: (450) 621-2995  
Fax: (450) 621-4995

Lake Worth  
Florida, USA  
33467-5749

Toronto, Canada  
Tel.: +1 (647) 544-2995

[www.flofab.com](http://www.flofab.com)



SERVICE 24/7:  
[parts@flofab.com](http://parts@flofab.com)