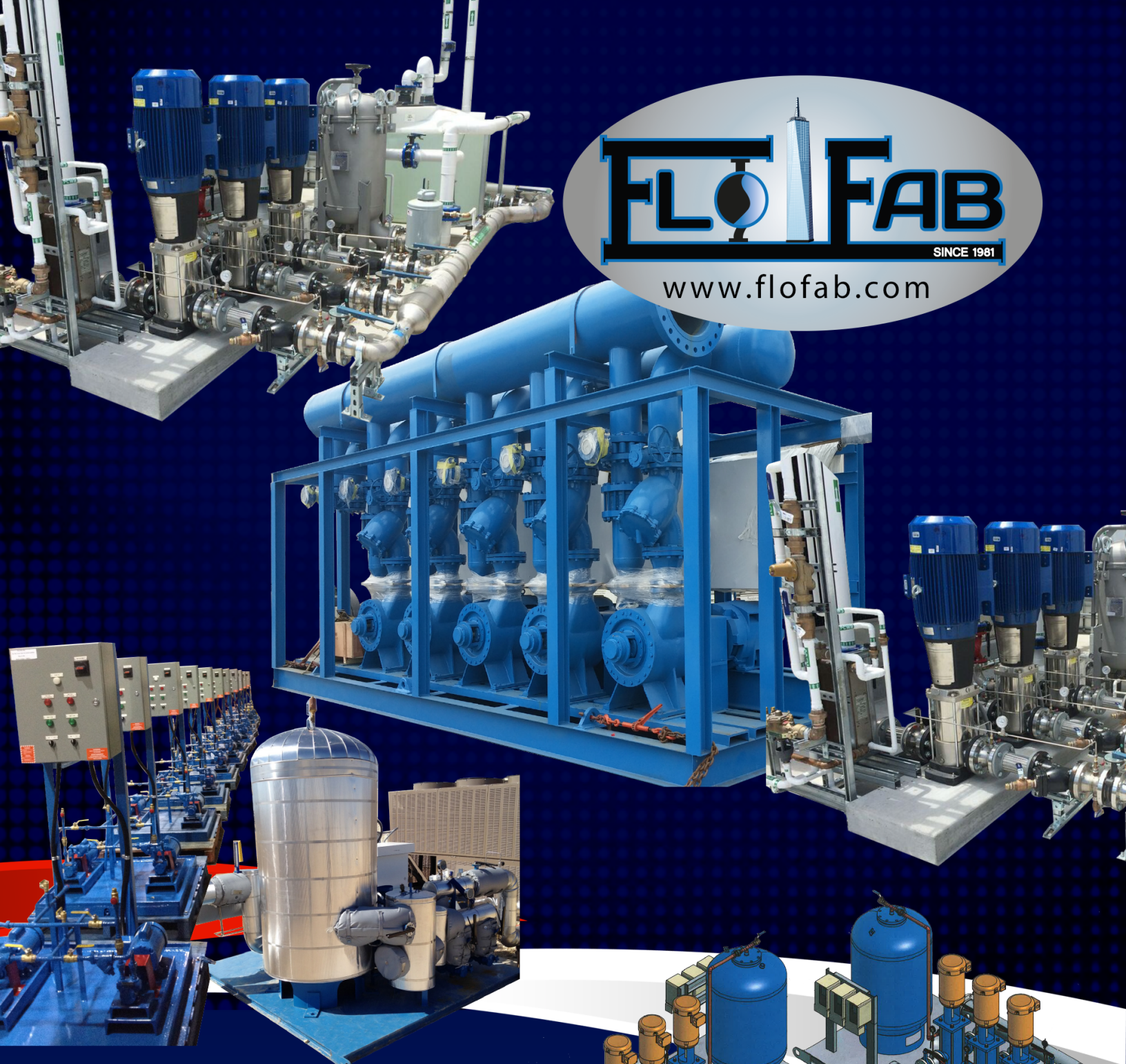




www.flofab.com



PACKAGE CATALOG



**Booster • Boiler Pack
Large Cooling • Heat Transfer
Duplex Pumps - Heating System
Heating or Cooling**



Index

03	About Us & Timeline	04	Quebec Enterprise vol.63 Text	05	Our Advantages	06	Typical Mechanical Room
07	Quotation Requirements for Skid Package	08	Chiller Package & Duplex Fuel Oil System	09	Duplex Constant Pressure System & Chiller Package	10	Heating Cooling with Enclosure & Duplex Constant Pressure System
11	Large Cooling Package & Duplex Package	12	Different Packages Shown inside Their Buildings	14	Jobs Pictures		

History

Flo Fab was established in 1981 by Denis Gauvreau who created and developed the products line and constantly being perfected by Marc Gauvreau, as well as by a team of professional engineers and designers. It's a combination of existing designs from several renowned products and the innovative ideas of a new generation professionals.

Through the years, Flo Fab has acquired several companies and service entities including : AQUA-PRO-FAB (ASME Tanks manufacturer), MÉNARD, LÉONARD ÉLECTRIQUE, PMA. , Furthermore Flo Fab purchased equipment, fabrication designs and patterns from IDEALCO, a manufacturer of shell and tube type heat exchangers.

The after sales services, sales, engineering, R&D, production, quality control, accounting and administration departments of all the above companies share the same location.

In December 2014, Marc Gauvreau, son of the founder, acquired all shares of The company. Flo Fab and is constantly investing in new state of the art innovations new product like the XRI series and Prefab Skid for Hydronic Heating & cooling system, pumping systems. This has allowed Flo Fab to retain competent and experienced staff of professionals with varied and specialized abilities that constantly work on improving our existing products and add new engineered solutions that exceeding customer's expectations .

Flo Fab has grown quite rapidly and now proudly offers of a wide range of products available directly from one manufacturer. This includes pumps & pump packages, tanks, heat exchangers & hydronic accessories. This allows each project stakeholders to enjoy economical savings, peace of mind, best value for their investment and optimized total cost of ownership.

About us

CENTRIFUGAL PUMPS | TANKS
COMPLETE CHILLER PACKAGE

Flo Fab is a leader in the pumps industry. In-line Pumps, In-line Circulators, End Suction Base Mounted, Horizontal Closed Coupled End Suction, Horizontal Closed Coupled Stainless Steel Pump, Multi Stage, Submersible Effluent & Sewage, Condensate, Boiler Feed Closed Coupled, Vertical Turbine, Split Case, 16 Position Single Suction, Flo Fab has it and so much more. All Flo Fab pump products are made with a resin pattern which results in an improved exterior finish, smooth interior passage, and higher efficiency pumps. All pumps are factory tested and a certified performance test is available when requested by the consultant.



OVER THE YEARS, FLO FAB HAS GROWN AND DEVELOPED A FULL LINE OF PUMPS FOR DIFFERENT MARKET SEGMENT. WE OFFER A FULL LINE OF HVAC, PLUMBING, INDUSTRIAL, MUNICIPAL AND RELATED ACCESSORIES.

We are proud to offer a wide range of products directly from one manufacturer. This includes pump, integrated skids package, tanks, heat exchangers and hydronic accessories. As the one stop shop, each stakeholders is afforded economical savings, one source responsibility, best value for their investment and optimized total cost of the project.



All Flo Fab pump products are made with a resin pattern which results in an improved exterior finish, smooth interior passage, and higher efficiency pumps. All pumps are factory tested and we offer an optional performance test.



1981

Flo Fab was founded by Denis Gauvreau who created and developed the product line.

1990

Flo Fab sells its own line of pumps designed in Quebec. It all started in a small factory located in Laval.

2000

In 2000, Flo Fab has moved to a new factory of 28,000 sq. ft. in Bois-des-Filion.

2022

The boom in the construction industry allowed Flo Fab to have a great year despite the pandemic.

2020

The plant was expanded by another 37,000 sq. ft.

2020

Sales are up 40%

2014

Marc Gauvreau, son of the founder, acquired all the shares of the company.

The company is experiencing, an impressive growth.

Magazine Quebec Enterprise, volume 63
Text by Guy Hébert



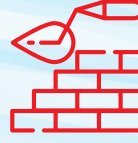
MANUFACTURE

When Denis Gauvreau founded Flo Fab in 1981, the company was only doing the distribution of pumps and accessories HVAC (Heat, Ventilation and Air) Conditioning - HVAC for heating, ventilation and air conditioning). Later, under the governance of the second generation of Gauvreau, Flo Fab began manufacturing pumps. The manufacturing side of the company was born with the conception design of an accessory that measured the flow rate in water pipes. Today Flo Fab is now run by Marc Gauvreau, with the support of its employees competent at all levels and in all divisions..



ITS OWN LINE

Since 1990, Flo Fab has been selling its own line of pumps designed right here at Quebec. It all started in a small factory located in Laval. In 2000, Flo Fab has moved to a new factory of 28,000 sq. ft. in Bois-des-Filion, which has even been enlarged by another 37,000 ft2 in 2020



CONSTRUCTION

During these years, Flo Fab has developed pumps with stainless steel recessed impellers for its 4 900 H&V, 2600, XRI series Universal and ZDRI with double suction. Stainless steel impellers have longer life, regardless of either the applied liquid to be compared to the similar bronze impellers.



DELIVERY

The company is now selling its product in the United States, in the Caribbean and in South America where demand is currently growing. Along the way, we also did the acquisition of a service center to to get to know the strengths and weaknesses of competitors' products. We are a small player in a very big market where we have to find creative solutions to counter protectionist policies like the Buy America Act. This is after the 2008 crisis that we have decided to improve our turnover in Canada», says Marc Gauvreau.



Our Advantages



Statistics

The boom in the construction industry has allowed Flo Fab to have a record year despite the pandemic in 2020 and already in 2021, sales are up 40%.



A Pioneer in the Industry

Our Founder



Our Employees

With about 50 employees including several engineers « on the mark » as the saying goes proudly Marc Gauvreau, and about forty of subcontractors, Flo Fab sees the future with optimism while recognizing that one of its biggest challenges is the retention of its staff



Flo Fab expands to serve you better

The expansion of the facilities in Bois-des-Filion made it possible to reorganize the factory in order to increase the production rate. « The contractor handed over the keys to us on March 13, 2020, the day the pandemic forced the government to impose almost general confinement.



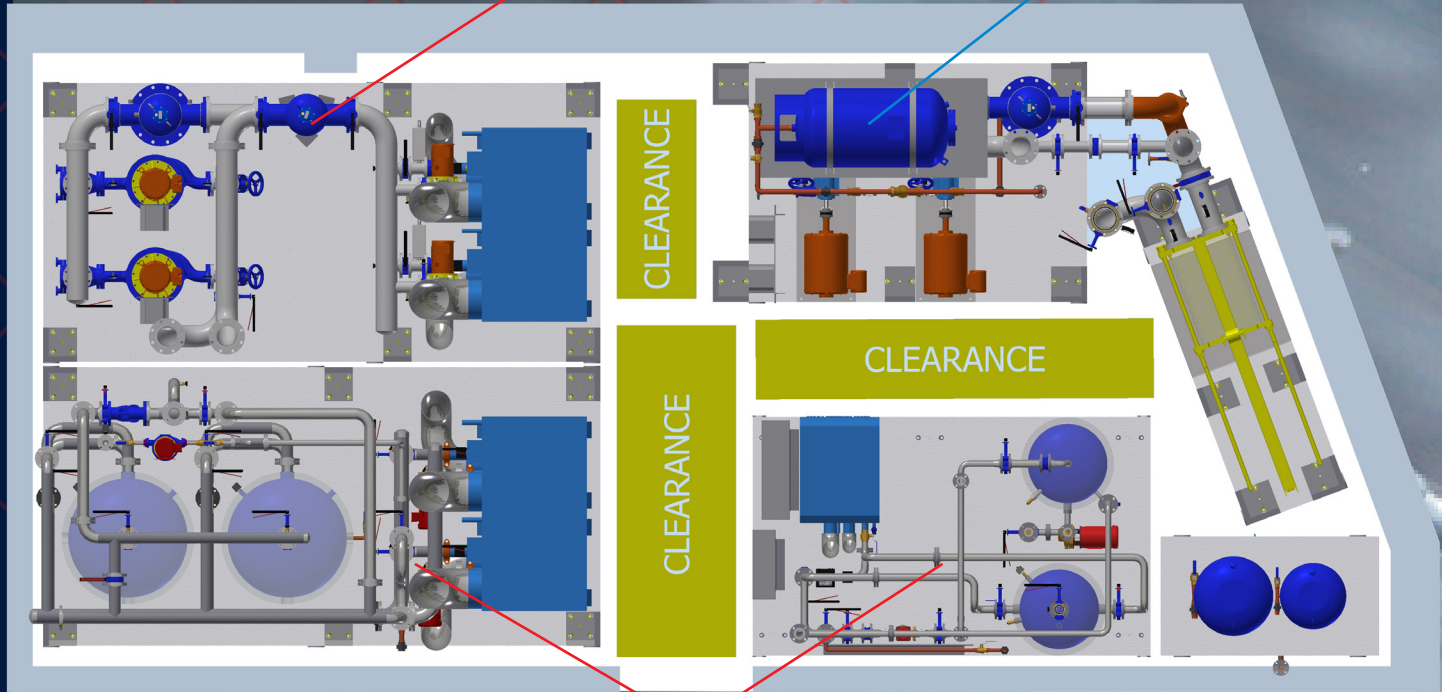
« As soon as there is a crane. There is a pump »

« there are pumps everywhere and as soon as there is a crane, for example, there is a pump », specifies the president. The company also offers complete sets of boiler rooms.

Typical Mechanical Room

Hydronic Heating System Skid

Hydronic Cooling System Skid



Hot Water Domestic Skid



POD Hotel, New York United-States

Quotation Requirements for Skid Package

What we need ?

- 1.1 System PID
- 1.2 Pumps, Tanks and Heat Exchangers Schedule
- 1.3 Cut sheets for non FloFab parts such as Boilers, Chillers, etc.
- 1.4 Skids footprint
- 1.5 Mechanical room footprint
- 1.6 Control Sequence details

Quality Control

All pumps are factory tested and certified performance test is available when requested by the consultant. Test facilities up to 400 HP with 27,000 gallon test bench with calibrated instruments.

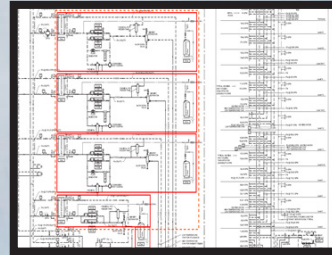
- 2.1 Heating and Cooling Systems
- 2.2 Module HC will be composed of two pumps, control panel VFD, expansion tank, air separator, chemical pot Feeder, and glycol fill system (optional), balancing valves, isolation valves, air vents and drain connections, multifunction valves, suction diffusers or Y strainers, interconnecting black steel schedule 40 piping. All package components are mounted on a structural steel base with lifting lugs.

Skid Advantages

- Solution for both : New construction and Retrofit.
- Easily add more modules for future expansion.
- One single point of Responsibility / Contact .
- One single submittal for approval Vs. Individual submittals for each component.
- Financial : Cost reduction, Effectively reduce total cost of ownership for all project stakeholders (Contractor / Consultant Engineer / End User)
- Financial : Space saving due to optimized space utilisation.
- Financial : Time (Cost) saving : Skid built in parallel during building construction, also .
- Financial : Cash flow management: One single invoice / payment for all works
- Financial : Overhead saving including project management, logistical coordination, insurance expense, ...etc
- Financial : No surplus or extra components left after fabrication by contractor.
- Time (Cost) saving : No construction delay due to tested = site plug & play
- Safety: Avoid unpleasant site safety incidents and lost days as we tremendously minimize job site man-hours.



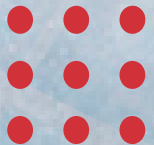
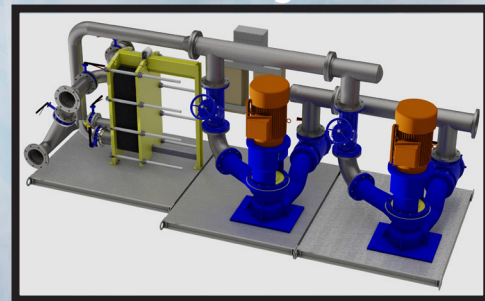
PID:



Production:



Package:



SPECS example :

Product	Product Type	Section(s)	Date Submitted	Status	
XRI	Separately Coupled, Horizontally Mounted, In-Line Centrifugal Pumps	232123-HYDRONIC PUMPS	1/5/2016	Submitted	View Details
880RI	Separately Coupled, Vertically Mounted, In-Line Centrifugal Pumps	232123-HYDRONIC PUMPS	1/5/2016	Submitted	View Details
2000	Separately Coupled, Base-Mounted, End-Suction Centrifugal Pumps	232123-HYDRONIC PUMPS	1/5/2016	Submitted	View Details

CHI Chiller Package

Capacities: up to 12 000 USGPM
(2725 m³ / hr)

Head: up to 692 ft. (300 PSI)
(211 m)

Pressure: up to 300 PSI
(2069 kPa)

Horsepower: up to 400 HP
(298.3 kW)

Drives: Electrical Motors

Applications: Water / Glycol

Temperature: up to 300°F
(144°C)

Construction Materials:
Bronze / Stainless Steel
or Cast Iron



Garden City, Texas
United-States



D-FOM

Duplex Fuel Oil System

Capacities: up to 30 USGPM
(3.1 m³ / hr)

Head: up to 692 ft. (300 PSI)
(211 m)

Pressure: up to 300 PSI
(2069 kPa)

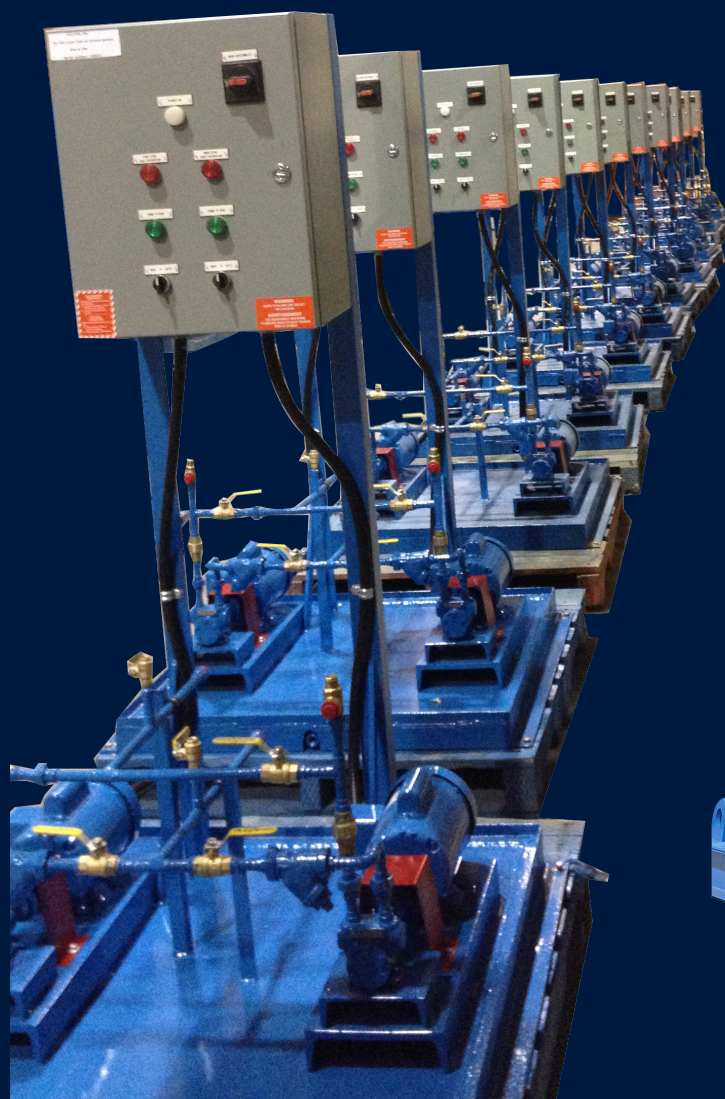
Horsepower: up to 10 HP
(7.46 kW)

Drives: Electrical Motors

Applications: Water / Glycol

Temperature: up to 150°F (65°C)

Construction Materials:
Bronze / Stainless Steel
or Cast Iron



D-CPS-HT Duplex Constant Pressure System

Capacities: up to
12 000 USGPM
(2725 m³ / hr)

Head: up to 692 ft.
(300 PSI) (211 m)

Pressure: up to
300 PSI (2069 kPa)

Horsepower: up to
400 HP (298.3 kW)

Drives:

Electrical Motors

Applications:

Water / Glycol

Temperature: up to
300°F (144°C)

Construction Materials:

Bronze / Stainless Steel
or Cast Iron



Fresno, California
United-States

BOI Chiller Package

Capacities: up to
12 000 USGPM
(2725 m³ / hr)

Head: up to 692 ft.
(300 PSI) (211 m)

Pressure: up to
300 PSI
(2069 kPa)

Horsepower: up to
400 HP (298.3 kW)

Drives:

Electrical Motors

Applications:

Water / Glycol

Temperature: up to
300°F (144°C)

Construction

Materials:

Bronze / Stainless Steel
or Cast Iron



San Francisco, California
United-States



Michigan, United-States

HCE Heating Cooling with Enclosure



Capacities: up to 12 000 USGPM
(2725 m³ / hr)

Head: up to 692 ft. (300 PSI)
(211 m)

Pressure: up to 300 PSI
(2069 kPa)

Horsepower: up to 400 HP
(298.3 kW)

Drives: Electrical Motors

Applications: Water / Glycol

Temperature: up to 300°F(144°C)

Construction Materials:
Bronze / Stainless Steel
or Cast Iron



D-CPS-HT Duplex Constant Pressure System

Capacities: up to 12 000 USGPM (2725 m³ / hr)

Head: up to 692 ft. (300 PSI) (211 m)

Pressure: up to 300 PSI (2069 kPa)

Horsepower:
up to 400 HP
(298.3 kW)

Drives: Electrical Motors

Applications: Water / Glycol

Temperature:
up to 300°F
(144°C)

**Construction
Materials:**
Bronze / Stainless
Steel or Cast Iron



LCOO

Large Cooling Package

Capacities: up to 12 000 USGPM (2725 m³ / hr)

Head: up to 692 ft. (300 PSI) (211 m)

Pressure: up to 300 PSI (2069 kPa)

Horsepower: up to 400 HP (298.3 kW)

Drives:

Electrical Motors

Applications: Water / Glycol

Temperature: up to 300°F(144°C)

Construction Materials: Bronze / Stainless Steel or Cast Iron



Fort Bliss - Texas , United-States

D-HC-XRI Duplex Package

Capacities: up to 12 000 USGPM (2725 m³ / hr)

Head: up to 692 ft. (300 PSI) (211 m)

Pressure: up to 300 PSI(2069 kPa)

Horsepower: up to 400 HP (298.3 kW)

Drives:

Electrical Motors

Applications: Water / Glycol

Temperature: up to 300°F(144°C)

Construction Materials: Bronze / Stainless Steel or Cast Iron

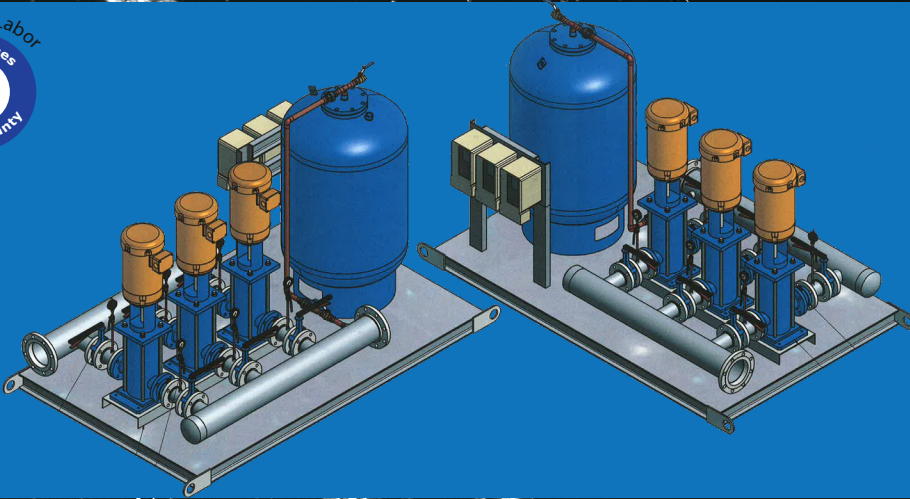


Toronto , Canada

FLO FAB

Booster

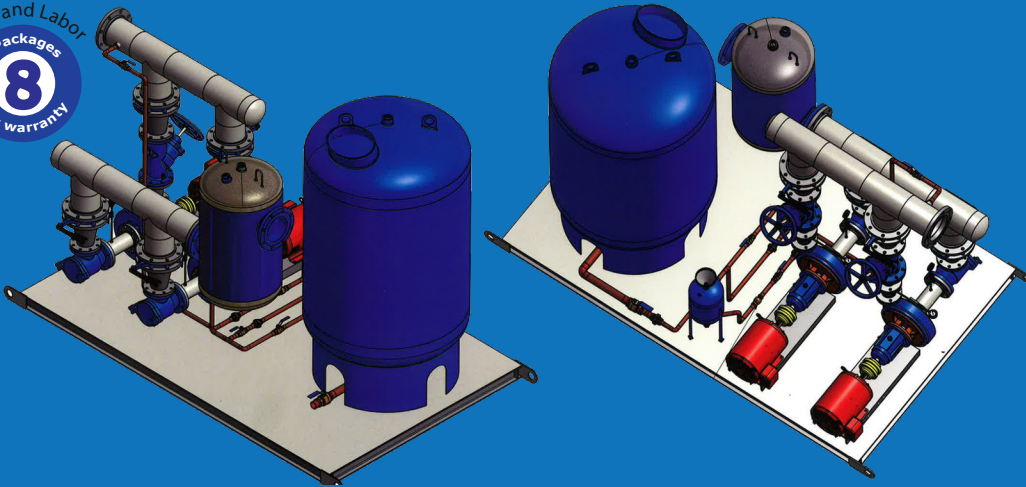
Parts and Labor
Packages
8
Year warranty



COGIR JAZZ ,
LONGUEIL, MONTREAL,

Heating or Cooling

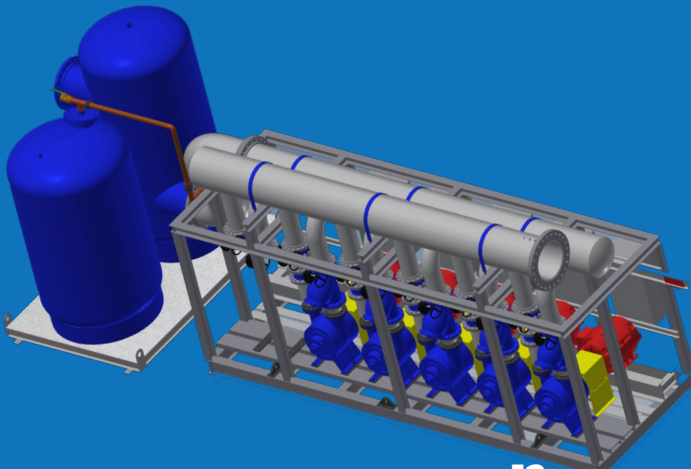
Parts and Labor
Packages
8
Year warranty



CONCORD GARDEN
RICHMOND, B.C., CA

Large Cooling

Parts and Labor
Packages
8
Year warranty



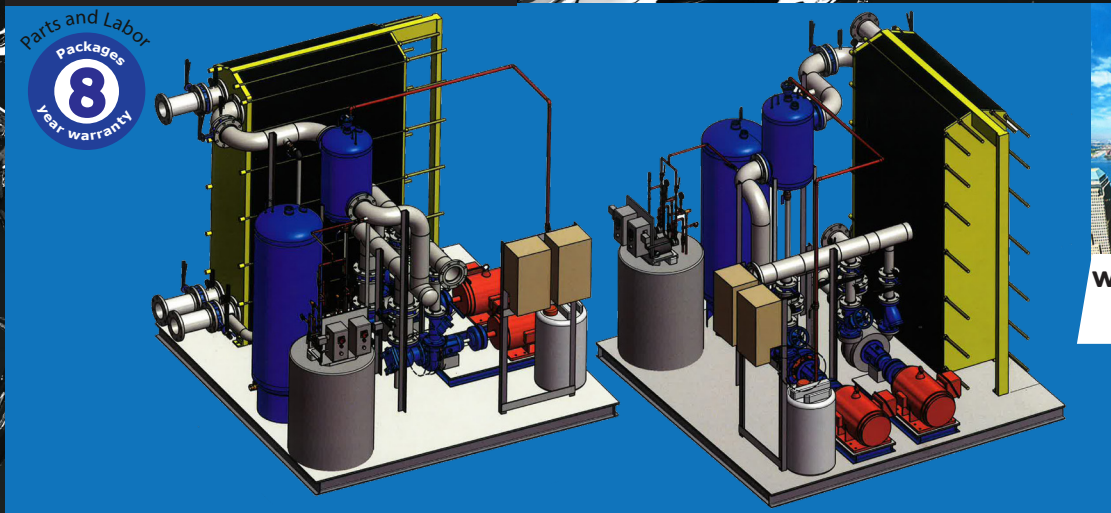
FORT BLISS HOSPITAL
EL PASO, TEXAS,
UNITED-STATES



Proud pumps supplier for the New World Trade Center towers in New York

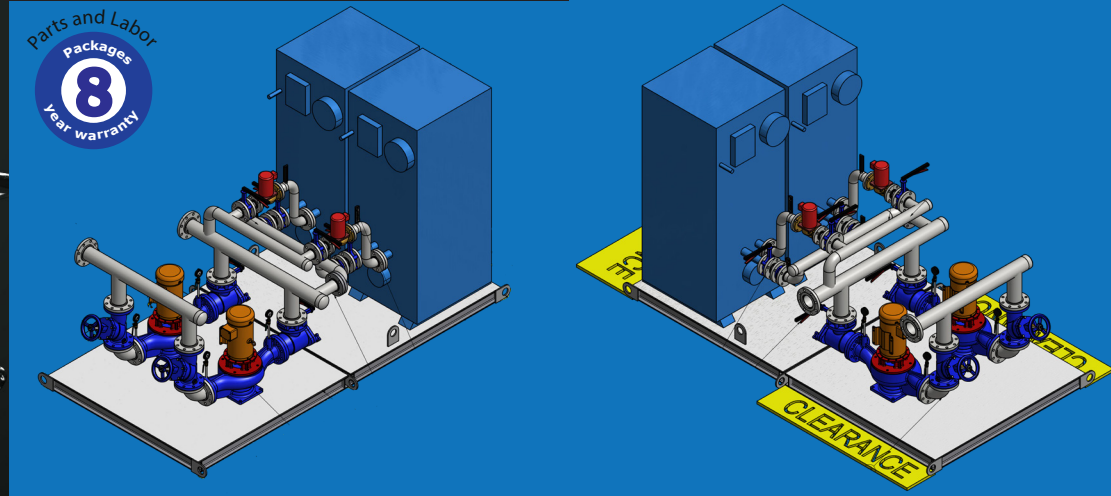
...And More...

Heat Transfer



**WORLD TRADE CENTER
NEW-YORK, U.S.A.**

Duplex Pumps - Heating System



**CRITERION HAGUE
NEW-YORK, U.S.A.
PHASE 1**

Boiler Pack



**CRITERION
NEW-YORK, U.S.A.
PHASE 2**





We are proud supplier for the following completed and on going projects :



Zermatt Lodge
Salt Lake City, UT, U.S.A.
<https://zermattresort.com>



Pier 17 South Street Seaport
South Street, New York, U.S.A
www.southstreetseaport.com



Pearl-Qatar
Doha, Qatar
www.thepearlqatar.com



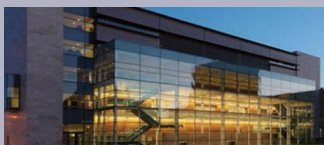
Museum of Science and Industry
Tampa, Florida
www.mosi.org
Eng: Advance System Engineering



Exchange Tower
Vancouver, B.C., Canada
www.theexchangebuilding.ca



Dar El Salam General Hospital
Cairo Governorate, Egypt



Brock University Center
St. Catharines, Ontario, Canada
<https://www.brocku.ca>



520 Park Avenue
New York, U.S.A
www.520parkavenue.com



Saudi Jeddah
Jeddah Saudi, Arabia
www.ports.gov.sa



St-Joseph Women's Hospital
Tampa, Florida
www.sjbhealth.org
Eng: Smith, Seckman, Reid Engineering



Millenium Hilton
New-York City, NY, U.S.A
www.hilton.com



Le M Lorraine
Lorraine, Quebec, Canada
www.lemlorraine.com



Morton Plant North Bay Hospital
New Port Richey, Florida
www.mortonplant.com
Eng: IC Thomasson Association Incorporated



Lowney
Montréal, Quebec, Canada
<http://lelowney.prevel.ca>



Sheepshead Residential Tower
Brooklyn, New York City, U.S.A.
<http://www.sheepsheadbites.com>



Sales and Service:

Quebec, Canada
Tel.: (450) 621-2995
Fax: (450) 621-4995

SERVICE 24/7:
parts@flobab.com

www.flobab.com

