

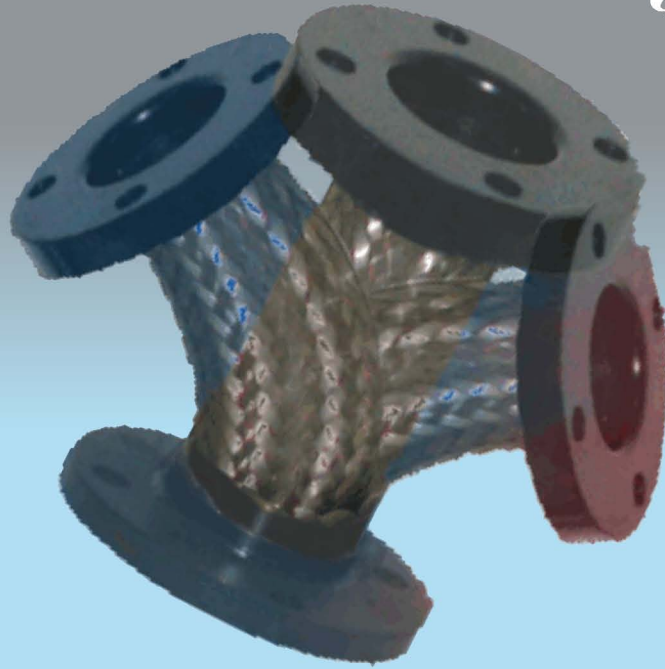
FLO FAB

FF



Go

with the
FLO



Flexible Connectors SERIES "ST-SM-SSP-DSP-DUT"

Manufacturer of Pumps, Tanks, Heat Exchangers & Accessories
for HVAC Market After-Sales Parts and Services

Flexible Connectors SERIES "ST-SM-SSP-DSP-DUT"

www.flofab.com

FLO FAB INC
LAKE WORTH,
FLORIDA, USA



Flexible Connectors

STAINLESS STEEL FLEXIBLES

2 - 3

STAINLESS STEEL FLEXIBLES Series ST

2

STAINLESS STEEL FLEXIBLES Series SM

3

EPDM FLEXIBLES

4 - 10

UNION ARCH DUT

4

SINGLE ARCH SSP

5 - 6

DOUBLE ARCH DSP

7 - 8

CHARTS 1 & 2 FOR EPDM FLEXIBLES

9

TYPICAL SPECIFICATIONS FOR STAINLESS STEEL & EPDM FLEXIBLES

10





SUBMITTAL DATA SHEET
 ISSUE DATE: MAY 2008
 REVISION DATE: MAY 2008

FEATURES

Body: Stainless steel single braided corrugated hose with SCH40 carbon steel male nipples welded at each end.

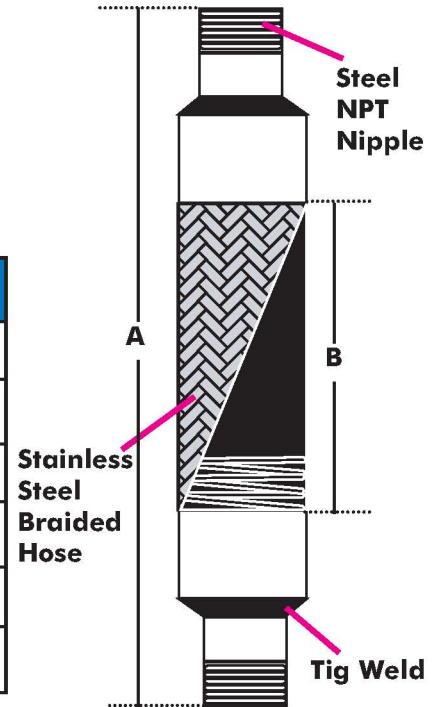
Sizes: From 1/2" to 2" (15mm to 50mm)

Lengths: From 10" to 14" (250mm to 350mm)
 other lengths also available.

Braided Hose: Gives a high temperature leak proof, with appropriate fittings attached you have a connector which allows temperature up to 850°F (457°C) and pressure up to 850 PSI (5860 kPa) at 70°F (21°C).

Temperature: As working temperature increases, the pressure ratings of corrugated hose decreases (See chart below)

Allowable Motion: Flexible pump connectors will absorb vibration, release stress from mating equipment and allow the correction of some misalignment



NOMINAL DIMENSIONS

Models	Sizes	A	B	Pressure @ 70°F (21°C)	Weight
ST0050-10	1/2" 15 mm	9 3/4" 247.65 mm	6 1/2" 165.1 mm	750 PSI 5172 kPa	0.5 lbs 0.2 kg
ST0075-10	3/4" 20 mm	9 7/8" 248.92 mm	6 1/2" 165.1 mm	750 PSI 5172 kPa	0.75 lbs 0.3 kg
ST0100-10	1" 25 mm	9 3/4" 247.65 mm	6 1/2" 165.1 mm	650 PSI 4482 kPa	1 lbs 0.4 kg
ST0125-10	1 1/4" 32 mm	10 1/8" 256.54 mm	6" 152.4 mm	550 PSI 5172 kPa	1.5 lbs 0.6 kg
ST0150-10	1 1/2" 40 mm	9 7/8" 248.92 mm	5 1/2" 139.7 mm	500 PSI 3448 kPa	2 lbs 0.9 kg
ST0200-14	2" 50 mm	13 3/4" 349.25 mm	7 1/2" 101.6 mm	475 PSI 3275 kPa	2.5 lbs 1.1 kg

Dimensions are subject to change without prior notice

TEMPERATURE/PRESSURE CHART

Temperature Conversion Factors Apply to pressure rating for elevated temperatures					Maximum Service Temperature						
Temperature		Material				Alloy	Maximum		Alloy	Maximum	
°C	°F	STAINLESS STEEL	STEEL	MONEL	BRONZE		°C	°F		°C	°F
21	70	1.00	1.00	1.00	1.00	AISI Stainless Steel Type			Brazing (RCuZn-C or BCuP-2)		
65	150	0.97	0.99	0.93	0.92	321	815	1500	Bronze Hose	232	450
93	200	0.94	0.97	0.90	0.89	316 ELC	815	1500	Steel Hose	454	850
121	250	0.92	0.96	0.87	0.86	304	454	850	Silver Brazing (AWS-B-Ag-2)	315	600
148	300	0.88	0.93	0.83	0.83	302	454	850	Asbestos Packing Grade		
176	350	0.86	0.91	0.82	0.81	Mild Steel	454	850	Commercial Asbestos	204	400
204	400	0.83	0.87	0.79	0.78	Malleable Iron	426	800	Underwriters Asbestos	232	450
232	450	0.81	0.86	0.77	0.75		426	800	A Asbestos	287	550
260	500	0.78	0.81	0.73			232	450	AA Asbestos	315	600
315	600	0.74	0.74	0.72			232	450	AAA Asbestos	398	750
371	700	0.70	0.66	0.71			204	400	AAAA Asbestos	482	900
426	800	0.66	0.52	0.70			176	350	Cotton Cord Packing	93	200
482	900	0.62	0.50								
537	1000	0.60									
593	1100	0.58									
648	1200	0.55									
704	1300	0.50									
760	1400	0.44									
815	1500	0.40									
						Aluminum 525-0 (5052-0)	315	600			
						Galvanizing	232	450			
						Soft Solder (Pb: 60, Sn: 40)	121	250			
						(Pb: 95, Sn: 5)	176	350			

Dimensions not to be used for construction unless prints certified by factory.





Stainless Steel Flexibles Series SM

SUBMITTAL DATA SHEET
 ISSUE DATE: MAY 2008
 REVISION DATE: MAY 2008

FEATURES

Body: Stainless steel single braided corrugated hose with ASA #150 carbon steel plate flanges welded at each end.

Sizes: From 2" to 14" (50mm to 350mm)

Lengths: From 10" to 20" (250mm to 500 mm)
 other lengths also available.

Braided Hose: Gives a high temperature leak proof, with appropriate fittings attached you have a connector which allows temperature up to 850°F (457°C) and pressure up to 850 PSI (5860 kPa) at 70°F (21°C).

Temperature: As working temperature increases, the pressure ratings of corrugated hose decreases (See chart on page 2)

Allowable Motion: Flexible pump connectors will absorb vibration, release stress from mating equipment and allow the correction of some misalignment



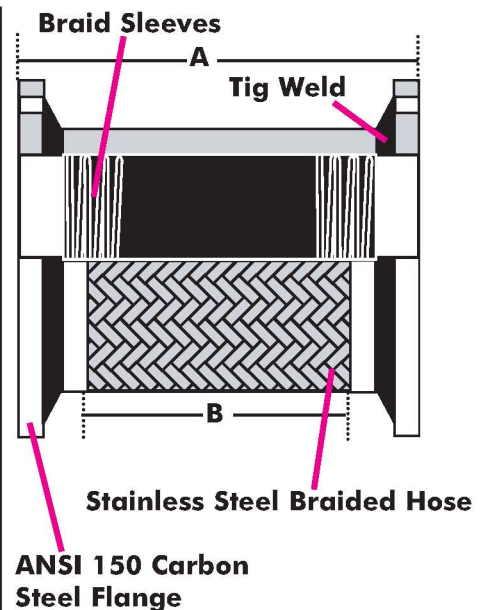
NOMINAL DIMENSIONS

Models	Sizes	A	B	Pressure @ 70°F (21°C)	Weight
SM0200-10	2" 50 mm	9 ³ / ₄ " 247.65 mm	7" 177.8 mm	375 PSI 2585 kPa	19 lbs 8.6 kg
SM0250-10	2 ¹ / ₂ " 65 mm	10 ⁵ / ₁₆ " 261.62 mm	7 ¹ / ₄ " 184.15 mm	375 PSI 2585 kPa	19 lbs 8.6 kg
SM0300-10	3" 80 mm	10" 254 mm	7 ¹ / ₄ " 184.15 mm	325 PSI 2240 kPa	22 lbs 10 kg
SM0400-11	4" 100 mm	11 ¹ / ₂ " 292.1 mm	8 ³ / ₄ " 222.25 mm	300 PSI 2068 kPa	29 lbs 13.1 kg
SM0500-13	5" 125 mm	13" 330.2 mm	9 ¹ / ₂ " 241.3 mm	200 PSI 1380 kPa	36 lbs 16.3 kg
SM0600-14	6" 150 mm	14 ¹ / ₄ " 361.95 mm	10 ¹ / ₂ " 266.7 mm	175 PSI 1206 kPa	42 lbs 19 kg
SM0800-15	8" 200 mm	15 ¹ / ₂ " 393.7 mm	11 ¹ / ₂ " 292.1 mm	175 PSI 1206 kPa	74 lbs 33.5 kg
SM1000-17	10" 250 mm	17 ³ / ₄ " 450.85 mm	12 ³ / ₄ " 323.85 mm	150 PSI 1034 kPa	90 lbs 40.8 kg
SM1200-18	12" 300 mm	18 ³ / ₈ " 467.36 mm	14" 355.6 mm	125 PSI 862 kPa	134 lbs 60.8 kg
SM1400-20	14" 350 mm	20" 508 mm	16" 406.4 mm	105 PSI 724 kPa	180 lbs 81.7 kg

Dimensions are subject to change without prior notice

*Other sizes are available but not shown

note: Install all pump connectors in a straight line without offset. Piping must be anchored or hung so that the weight of the piping does not rest on the pump connector



ANSI 150 Carbon Steel Flange

Dimensions not to be used for construction unless prints certified by factory.

EPDM Union Arch Flexibles Series DUT

SUBMITTAL DATA SHEET
 ISSUE DATE: MAY 2008
 REVISION DATE: MAY 2008

FEATURES

Body: Spherical shape, stronger than the standard cylindrical shape. The spherical designed "long-arch" reduces turbulence and sediment build-up. #150 MI Union fittings at both ends.

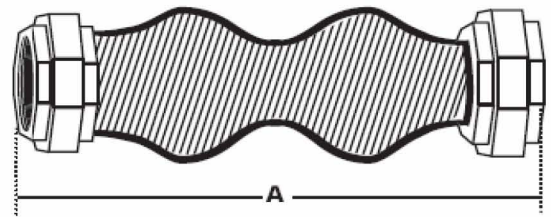
Ratings: Up to 214 PSI (1475 kPa) and up to 240°F (115°C)
 See Chart 2

Sizes: From 1/2" to 2" (15mm to 50mm)

Allowable Motion: Spherical bellows can absorb many times the movements of standard products. Compression, extension, deflection and angular movements are easily handled. High pressure molding of EPDM results in lighter weight and thinner wall sections that requires less force to deflect than other products. Reducing and preventing stresses and strains on flanges or piping. Series DUT allows angular motion to 45° angle.

Corrosion Resistance: EPDM offers excellent chemical resistance. Under normal conditions, extensive service life can be expected from EPDM material.

Vibration, Noise & Shock: Reduces noise, sound loses energy travelling axially through the EPDM bellows. Reduces vibrations, insulates the equipment to allow free movement on its vibration mountings.



NOMINAL DIMENSIONS

Models	Sizes	A	Allowable Movements				Pressure @ 70°F (21°C)	Weight
			Compression	Extension	Lateral	Angular		
DUT0050	1/2" 15 mm	6 3/4" 171.45 mm	7/8" 20.32 mm	1/4" 6.35 mm	7/8" 20.32 mm	45°	150 PSI 1034 kPa	2 lbs 0.9 kg
DUT0075	3/4" 20 mm	8" 203.2 mm	7/8" 20.32 mm	1/4" 6.35 mm	7/8" 20.32 mm	45°	150 PSI 1034 kPa	2 lbs 0.9 kg
DUT0100	1" 25 mm	8 1/4" 209.55 mm	7/8" 20.32 mm	1/4" 6.35 mm	7/8" 20.32 mm	45°	150 PSI 1034 kPa	3 lbs 1.3 kg
DUT0125	1 1/4" 32 mm	8 7/8" 223.52 mm	7/8" 20.32 mm	1/4" 6.35 mm	7/8" 20.32 mm	45°	150 PSI 1034 kPa	3 lbs 1.3 kg
DUT0150	1 1/2" 40 mm	8 1/2" 215.9 mm	7/8" 20.32 mm	1/4" 6.35 mm	7/8" 20.32 mm	45°	150 PSI 1034 kPa	4 lbs 1.8 kg
DUT0200	2" 50 mm	9 1/2" 241.3 mm	7/8" 20.32 mm	1/4" 6.35 mm	7/8" 20.32 mm	45°	150 PSI 1034 kPa	6 lbs 2.7 kg

Dimensions are subject to change without prior notice

Dimensions not to be used for construction unless prints certified by factory.



Special Order Long Lead Time

EPDM Single Arch Flexibles Series SSP

SUBMITTAL DATA SHEET
ISSUE DATE: MAY 2008
REVISION DATE: MAY 2008

FEATURES

Body: Spherical shape, stronger than the standard cylindrical shape. The spherical designed "long-arch" reduces turbulence and sediment build-up. ANSI #150 flanges at both ends.

Ratings: Up to 214 PSI (1475 kPa) and up to 240°F (115°C)
See Chart 2

Sizes: From 1½" to 20" (40mm to 500mm)

Allowable Motion: Spherical bellows can absorb many times the movements of standard products. Compression, extension, deflection and angular movements are easily handled. High pressure molding of EPDM results in lighter weight and thinner wall sections that requires less force to deflect than other products. Reducing and preventing stresses and strains on flanges or piping. Series SSP allows standard motion.

Corrosion Resistance: EPDM offers excellent chemical resistance. Under normal conditions, extensive service life can be expected from EPDM

Vibration, Noise & Shock: Reduces noise, sound loses energy travelling axially through the EPDM bellows. Reduces vibrations, insulates the equipment to allow free movement on its vibration mountings.

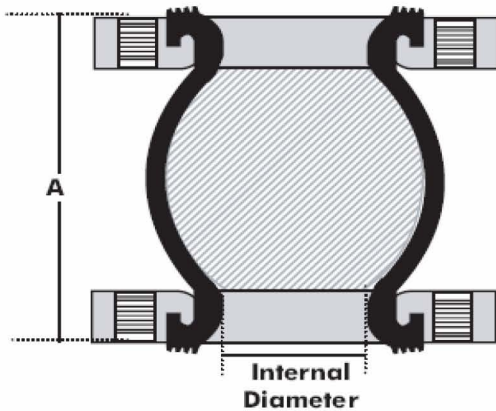
Easy Installation: The floating, metallic flanges rotate readily on the bellow compensating for mating flange rotational misalignment. Extra retaining rings or gasket are not required. The rigid metallic flange prevent seepage-sweeping. All flanges are drilled to #150 ASA standard drilling pattern (other drilling patterns available on demand.) See chart 1 for flange/bolting dimensions. All face to face dimensions are shown from gasket to gasket (the gasket is an integral part of the joint.)



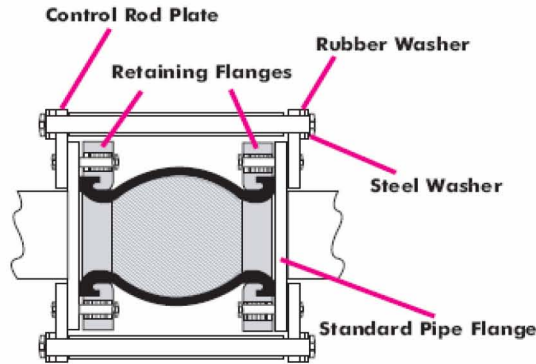
Dimensions not to be used for construction unless prints certified by factory.

Special Order Long Lead Time EPDM Single Arch Flexibles Series SSP

SUBMITTAL DATA SHEET
ISSUE DATE: MAY 2008
REVISION DATE: MAY 2008



EPDM FLEXIBLE CONTROL UNITS



When a pipe line is not anchored, or supported, or it is subject to extreme temperature changes that causes movement and is forced beyond the allowable limits, the expansion joint can be damaged. Control units are designed to restrict movement, Sleeves can be furnished to control excessive axial compression. A standard control unit consist of two or more tie rods, triangular stretcher bolt plates and bolts, nuts and washers. Each plate is drilled with three holes. Two are for bolting the control unit to the flanges, the third is for passage of the control

NOMINAL DIMENSIONS

Models	Sizes	A	Allowable Movements				Pressure @ 70°F (21°C)	Weight
			Compression	Extension	Lateral	Angular		
SSP0150	1 1/2" 40 mm	6" 152.4 mm	1/2" 12.7 mm	3/8" 10.16 mm	1/2" 12.7 mm	15°	214 PSI 1475 kPa	7 lbs 4 kg
SSP0200	2" 50 mm	6" 152.4 mm	1/2" 12.7 mm	3/8" 10.16 mm	1/2" 12.7 mm	15°	214 PSI 1475 kPa	9 lbs 4.5 kg
SSP0250	2 1/2" 65 mm	4 7/16" 113.03 mm	1/2" 12.7 mm	3/8" 10.16 mm	1/2" 12.7 mm	15°	214 PSI 1475 kPa	13 lbs 5.8 kg
SSP0300	3" 80 mm	4 3/4" 120.65 mm	1/2" 12.7 mm	3/8" 10.16 mm	1/2" 12.7 mm	15°	214 PSI 1475 kPa	14 lbs 6.3 kg
SSP0400	4" 100 mm	5 7/8" 147.32 mm	5/8" 13.97 mm	3/8" 10.16 mm	1/2" 12.7 mm	15°	214 PSI 1475 kPa	18 lbs 8.1 kg
SSP0500	5" 125 mm	6" 152.4 mm	5/8" 13.97 mm	3/8" 10.16 mm	1/2" 12.7 mm	15°	214 PSI 1475 kPa	21 lbs 9.5 kg
SSP0600	6" 150 mm	6 1/16" 163.83 mm	5/8" 13.97 mm	3/8" 10.16 mm	1/2" 12.7 mm	15°	214 PSI 1475 kPa	27 lbs 12.2 kg
SSP0800	8" 200 mm	6 7/16" 163.83 mm	5/8" 13.97 mm	1/2" 12.7 mm	3/4" 19.05 mm	15°	214 PSI 1475 kPa	37 lbs 16.7 kg
SSP1000	10" 250 mm	7 7/8" 187.96 mm	3/4" 19.05 mm	1/2" 12.7 mm	3/4" 19.05 mm	15°	214 PSI 1475 kPa	55 lbs 24.9 kg
SSP1200	12" 300 mm	8" 203.2 mm	3/4" 19.05 mm	1/2" 12.7 mm	3/4" 19.05 mm	15°	214 PSI 1475 kPa	83 lbs 37.5 kg
SSP1400	14" 350 mm	8" 203.2 mm	3/4" 19.05 mm	1/2" 12.7 mm	3/4" 19.05 mm	15°	114 PSI 785 kPa	100 lbs 45.3 kg
SSP1600	16" 400 mm	8" 203.2 mm	3/4" 19.05 mm	1/2" 12.7 mm	3/4" 19.05 mm	15°	114 PSI 785 kPa	115 lbs 52 kg
SSP1800	18" 450 mm	8" 203.2 mm	3/4" 19.05 mm	1/2" 12.7 mm	3/4" 19.05 mm	15°	114 PSI 785 kPa	122 lbs 55.2 kg
SSP2000	20" 500 mm	8" 203.2 mm	3/4" 19.05 mm	1/2" 12.7 mm	3/4" 19.05 mm	15°	114 PSI 785 kPa	148 lbs 67 kg

Dimensions are subject to change without prior notice

*Other sizes are available but not shown

Dimensions not to be used for construction unless prints certified by factory.



EPDM Double Arch Flexibles Series DSP

SUBMITTAL DATA SHEET
ISSUE DATE: MAY 2008
REVISION DATE: MAY 2008

FEATURES

Body: Spherical shape, stronger than the standard cylindrical shape. The spherical designed "long-arch" reduces turbulence and sediment build-up. ANSI #150 flanges at both ends.

Ratings: Up to 214 PSI (1475 kPa) and up to 240°F (115°C)
See Chart 2

Sizes: From 1 1/2" to 14" (40mm to 350mm)

Allowable Motion: Spherical bellows can absorb many times the movements of standard products. Compression, extension, deflection and angular movements are easily handled. High pressure molding of EPDM results in lighter weight and thinner wall sections that requires less force to deflect than other products. Reducing and preventing stresses and strains on flanges or piping. Series DSP allows extra motion.

Corrosion Resistance: EPDM offers excellent chemical resistance. Under normal conditions, extensive service life can be expected from EPDM

Vibration, Noise & Shock: Reduces noise, sound loses energy travelling axially through the EPDM bellows. Reduces vibrations, insulates the equipment to allow free movement on its vibration mountings.

Easy Installation: The floating, metallic flanges rotate readily on the bellow compensating for mating flange rotational misalignment. Extra retaining rings or gasket are not required. The rigid metallic flange prevent seepage-sweeping. All flanges are drilled to #150 ASA standard drilling pattern (other drilling patterns available on demand.) See chart 1 for flange/bolting dimensions. All face to face dimensions are shown from gasket to gasket (the gasket is an integral part of the joint.)

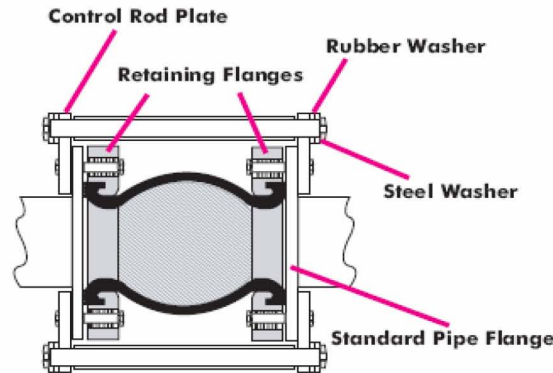
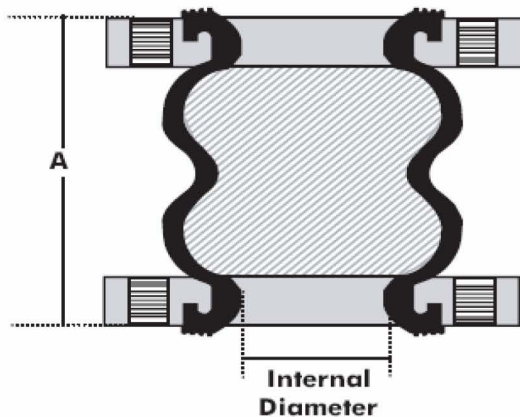


Dimensions not to be used for construction unless prints certified by factory.

EPDM Double Arch Flexibles Series DSP

SUBMITTAL DATA SHEET
 ISSUE DATE: MAY 2008
 REVISION DATE: MAY 2008

EPDM FLEXIBLE CONTROL UNITS



When a pipe line is not anchored, or supported, or it is subject to extreme temperature changes that causes movement and is forced beyond the allowable limits, the expansion joint can be damaged. Control units are designed to restrict movement. Sleeves can be furnished to control excessive axial compression. A standard control unit consist of two or more tie rods, triangular stretcher bolt plates and bolts, nuts and washers. Each plate is drilled with three holes. Two are for bolting the control unit to the flanges, the third is for passage of the control rod.

NOMINAL DIMENSIONS

Models	Sizes	A	Allowable Movements				Pressure @ 70°F (21°C)	Weight
			Compression	Extension	Lateral	Angular		
DSP0150	1 1/2" 40 mm	7" 177.8 mm	1" 25.4 mm	3/4" 19.05 mm	1" 25.4 mm	30°	214 PSI 1475 kPa 10 lbs 4.9 kg	
DSP0200	2" 50 mm	5 5/16" 134.62 mm	1" 25.4 mm	3/4" 19.05 mm	1" 25.4 mm	30°	214 PSI 1475 kPa 10 lbs 4.9 kg	
DSP0250	2 1/2" 65 mm	6 3/16" 157.48 mm	1" 25.4 mm	3/4" 19.05 mm	1" 25.4 mm	30°	214 PSI 1475 kPa 13 lbs 5.8 kg	
DSP0300	3" 80 mm	5 13/16" 147.32 mm	1" 25.4 mm	3/4" 19.05 mm	1" 25.4 mm	30°	214 PSI 1475 kPa 15 lbs 6.7 kg	
DSP0400	4" 100 mm	7 7/32" 191.26 mm	1 1/4" 31.75 mm	1" 25.4 mm	1 1/4" 31.75 mm	30°	214 PSI 1475 kPa 20 lbs 9 kg	
DSP0500	5" 125 mm	9" 228.6 mm	1 1/4" 31.75 mm	1" 25.4 mm	1 1/4" 31.75 mm	30°	214 PSI 1475 kPa 26 lbs 11.7 kg	
DSP0600	6" 150 mm	7 3/4" 196.85 mm	1 1/4" 31.75 mm	1" 25.4 mm	1 1/4" 31.75 mm	30°	214 PSI 1475 kPa 30 lbs 13.5 kg	
DSP0800	8" 200 mm	7 1/16" 195.58 mm	1 1/2" 38.1 mm	1" 25.4 mm	1 3/8" 35.56 mm	30°	214 PSI 1475 kPa 46 lbs 20.8 kg	
DSP1000	10" 250 mm	13" 330.2 mm	1 1/2" 38.1 mm	1" 25.4 mm	1 3/8" 35.56 mm	30°	214 PSI 1475 kPa 63 lbs 28.5 kg	
DSP1200	12" 300 mm	13" 330.2 mm	1 1/2" 38.1 mm	1" 25.4 mm	1 3/8" 35.56 mm	30°	214 PSI 1475 kPa 115 lbs 52 kg	
DSP1400	14" 350 mm	13" 330.2 mm	1 1/2" 38.1 mm	1" 25.4 mm	3/4" 19.05 mm	30°	214 PSI 1475 kPa 122 lbs 55.2 kg	

Dimensions are subject to change without prior notice

*Other sizes are available but not shown

Dimensions not to be used for construction unless prints certified by factory.



Charts 1 & 2 for EPDM Flexibles

SUBMITTAL DATA SHEET
 ISSUE DATE: MAY 2008
 REVISION DATE: MAY 2008

CHART 1 - FLANGE/BOLTING DIMENSIONS (Flanges #150 Standard ANSI Drilling)

Sizes	O.D. of Flange	Flange Thickness	B.C. Diameter	No of Holes	Diameter of Holes	Control Unit Weight
1 1/2" 40 mm	5" 127 mm	3/4" 19.05 mm	3 3/4" 95.25 mm	4	3/4" 19.05 mm	6.5 lbs 3 kg
2" 50 mm	6" 152.4 mm	3/4" 19.05 mm	4 3/4" 120.65 mm	4	3/4" 19.05 mm	6.5 lbs 3 kg
2 1/2" 65 mm	7" 177.8 mm	7/8" 20.32 mm	5 1/2" 139.7 mm	4	3/4" 19.05 mm	7.5 lbs 3.5 kg
3" 80 mm	7 1/2" 190.5 mm	15/16" 22.86 mm	6" 152.4 mm	4	3/4" 19.05 mm	8 lbs 3.7 kg
4" 100 mm	9" 228.6 mm	15/16" 22.86 mm	7 1/2" 190.5 mm	8	3/4" 19.05 mm	8 lbs 3.7 kg
5" 125 mm	10" 254 mm	15/16" 22.86 mm	8 1/2" 215.9 mm	8	7/8" 20.32 mm	8 lbs 3.7 kg
6" 150 mm	11" 279.4 mm	1" 25.4 mm	9 1/2" 241.3 mm	8	7/8" 20.32 mm	10 lbs 4.9 kg
8" 200 mm	13 1/2" 342.9 mm	1 1/8" 27.94 mm	11 3/4" 298.45 mm	8	7/8" 20.32 mm	13 lbs 5.8 kg
10" 250 mm	16" 406.4 mm	1 3/16" 30.48 mm	14 1/4" 631.95 mm	12	1" 25.4 mm	19 lbs 8.6 kg
12" 300 mm	19" 482.6 mm	1 3/4" 44.45 mm	17" 431.8 mm	12	1" 25.4 mm	21 lbs 9.5 kg
14" 350 mm	21" 533.4 mm	1 3/8" 35.56 mm	18 3/4" 476.25 mm	12	1 1/8" 27.94 mm	26 lbs 11.7 kg
16" 400 mm	23 1/2" 596.9 mm	1 7/16" 36.83 mm	21 1/4" 539.75 mm	16	1 1/8" 27.94 mm	27 lbs 12.2 kg
18" 450 mm	25" 635 mm	1 9/16" 40.64 mm	22 3/4" 577.85 mm	16	1 1/4" 31.75 mm	28 lbs 12.8 kg
20" 500 mm	27 1/2" 698.5 mm	1 11/16" 43.18 mm	25" 635 mm	20	1 1/4" 31.75 mm	30 lbs 13.5 kg

Notes:

- 1) Drilling meets #150 Standards of ANSI B16, B16.2, B16.5-AWWA C-207 - NBS/PS 15-69 and MSS-SP44
- 2) Expansion joints are furnished complete with retaining flanges. Control units are available on special order.

CHART 2 - TEMPERATURE/PRESSURE FACTORS

Models	Operating Temperature						Maximum Vacuum
	170°F (76°C)	180°F (83°C)	190°F (90°C)	200°F (95°C)	210°F (100°C)	225°F (110°C)	
2" to 12" 50 to 300 mm	214 PSI 1475 kPa	210 PSI 1447 kPa	195 PSI 1344 kPa	180 PSI 1240 kPa	165 PSI 1137 kPa	150 PSI 1034 kPa	16" HG 400 mm HG
14" to 20" 350 to 500 mm	180 PSI 1240 kPa	165 PSI 1137 kPa	150 PSI 1034 kPa	135 PSI 930 kPa	120 PSI 827 kPa	105 PSI 723 kPa	16" HG 400 mm HG

Dimensions are subject to change without prior notice

Notes: Vacuum rating is based on neutral installed length without external load.

Dimensions not to be used for construction unless prints certified by factory.

Typical Specifications

Typical Specifications for Stainless Steel Flexibles

Supply and install shown on plans FLO FAB stainless steel braided metal flexible connectors. Pump connectors are made only in series 300 stainless steel with stainless corrugated inner tubing and an outer shield of stainless wire braid. Steel fixed flanges ASA #150 standard or SCH40 nipples are used as end fittings. Maximum temperature is 850oF (457oC). Maximum working pressure ranges from 850 PSI (5850 Kpa) at 1/2" (15 mm) to 150 PSI (1034 Kpa) at 14" (350 mm). Lengths vary from 10" (250 mm) to 20" (500 mm). Other than standard lengths are available.

Available Sizes:

Model ST flexible connector (with F.N.P.T. connections): From 1/2" (15 mm) to 2" (50 mm)
 Model SM flexible connector with flanges: From 2" (50 mm) to 20" (500 mm)
 Typical Specifications for EPDM Flexibles

Typical Specifications for EPDM Flexibles

Supply and install as shown on plans FLO FAB EPDM flexible connectors. Each unit shall be molded on EPDM, the sphere combines the strength of the spherical shape, the flexibility of rubber and the durability of alignable steel flanges. It also offers maximum deflection, elongation and compression. The spherical designed "long-arch" reduces turbulence and noises. The floating flanges are standard #150 ASA drilled to mate. Each unit shall be capable of working pressures up to 214 PSI (1475 Kpa) and temperatures up to 240oF (115oC).

Available Sizes:

Model SSP-EPDM single flexible connector with flanges: From 1 1/2" (40 mm) ID to 20" (500 mm) ID
 Model DSP-EPDM dual flexible connector with flanges: From 1 1/2" (40 mm) ID to 14" (300 mm) ID
 Model DUT-EPDM union flexible connector with F.N.P.T. end: From 1/2" (20 mm) ID to 2" (50 mm) ID

FF

FLO FAB



**Manufacturer of Pumps, Tanks, Heat Exchangers & Accessories
for HVAC Market After-Sales Parts and Services**

www.flofab.com

FLO-FAB INC
LAKE WORTH,
FLORIDA, USA

SEPTEMBER 2009