

FLO FAB

Expansion Tanks

Series 2000



www.flofab.com

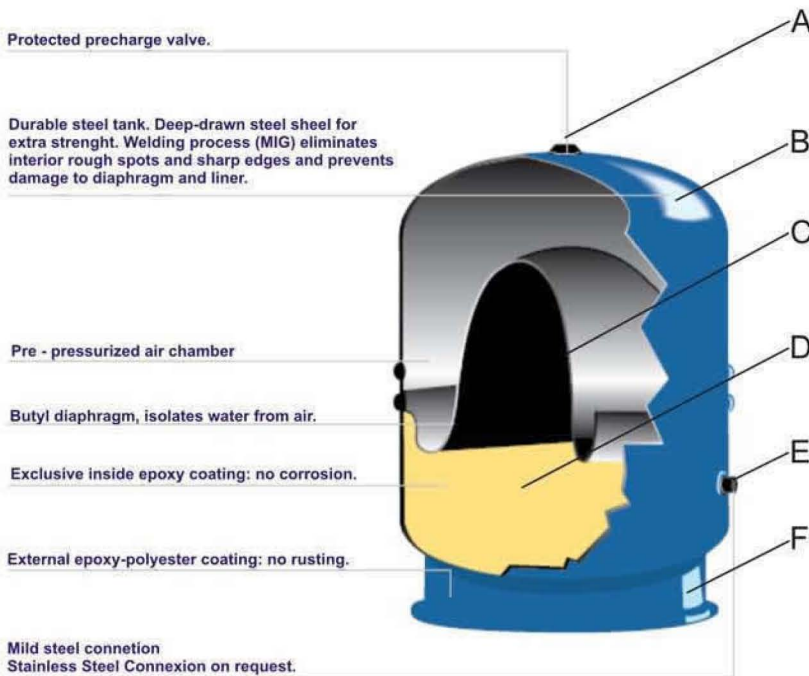
Manufacturer of Pumps, Tanks, Heat Exchangers & Accessories
for HVAC Market After-Sales Parts and Services

Expansion Tanks (NON ASME) -
Series 2000

FLO FAB INC
LAKE WORTH,
FLORIDA, USA

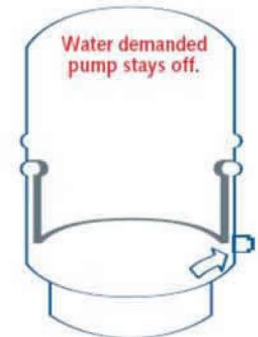
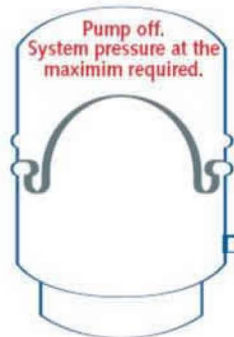
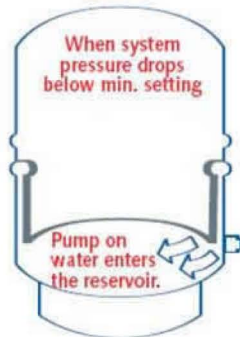
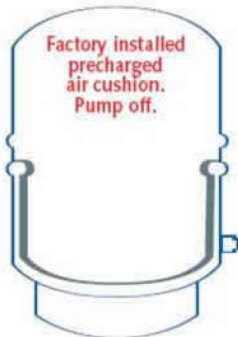
MODEL	DIAMETER (INCHES)	HEIGHT (INCHES)	CAPACITY		SYSTEM DRAWDOWN 30/50 (GAL.)	PRECHARGE	CONNECTION
			(GAL.)	(LITERS)			
2080	17.72	23.94	21.13	80.00	7.05	29 PSI / 2 BAR	1" NPT
2100	19.69	26.18	27.74	105.00	9.25	29 PSI / 2 BAR	1-1/4" NPT
2150	19.69	35.31	39.63	150.00	13.21	29 PSI / 2 BAR	1-1/4" NPT
2250	24.80	37.68	66.04	250.00	22.02	29 PSI / 2 BAR	1-1/4" NPT
2300	24.80	57.09	105.67	400.00	35.23	29 PSI / 2 BAR	1-1/4" NPT
2500	29.53	61.22	158.50	600.00	52.84	29 PSI / 2 BAR	1-1/4" NPT

NOTES: MAXIMUM OPERATING PRESSURE 150 PSI - MAXIMUM OPERATING TEMPERATURE 200°F



CONSTRUCTION BENEFITS

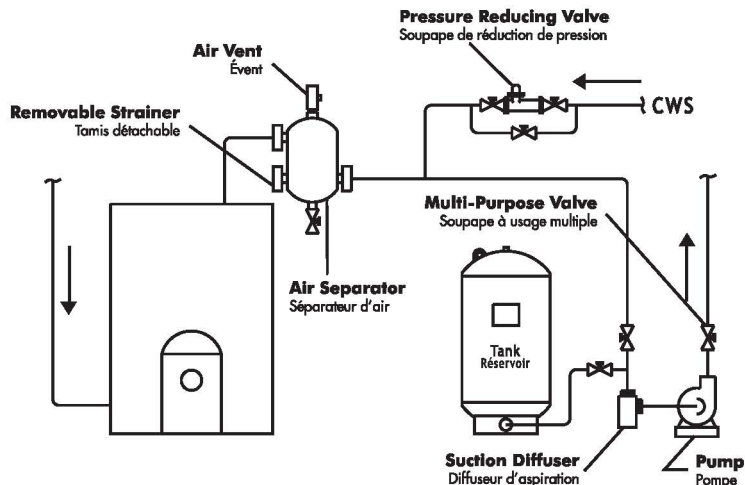
- A) PROTECTED PRECHARGE VALVE BRAZED TO PREVENT AIR LOSS.
- B) DEEP DRAWN HEAVY GAUGE STEEL, WITH FEWER WELDS.
- C) WELDED-IN ACCEPTANCE FITTING IS HIGH OFF THE FLOOR FOR EASIER AND SAFER INSTALLATION.
- D) LOWER PROFILE BASE SAVES SPACE.
- E) BAKED ON PLASTIC COATING TO STOP CORROSION AND GIVE APPLIANCE LIKE APPEARANCE.
- F) CHLORO BUTYL DIAPHRAGM ISOLATES WATER FROM AIR.



Détails d'installation/Installation Details

SIMPLE INSTALLATION

INSTALLATION SIMPLE

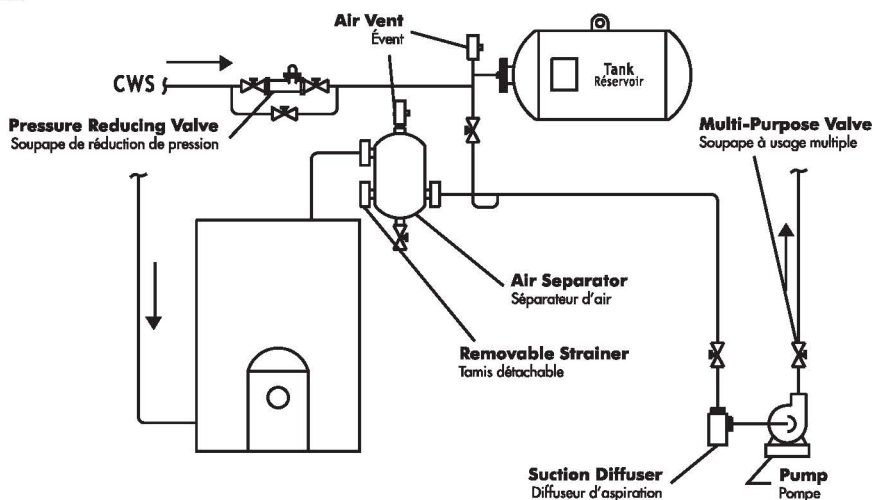


HORIZONTAL INSTALLATION

(OPTIONAL)

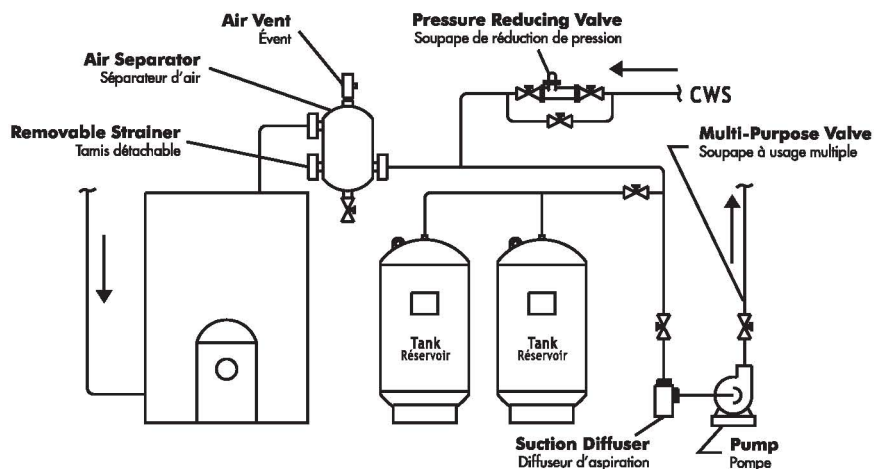
INSTALLATION HORIZONTALE

(OPTIONNELLE)



MULTI INSTALLATION

INSTALLATION MULTIPLE



FF

FLO FAB



**Manufacturer of Pumps, Tanks, Heat Exchangers & Accessories
for HVAC Market After-Sales Parts and Services**

www.flofab.com

FLO-FAB INC
LAKE WORTH,
FLORIDA, USA

SEPTEMBER 2009