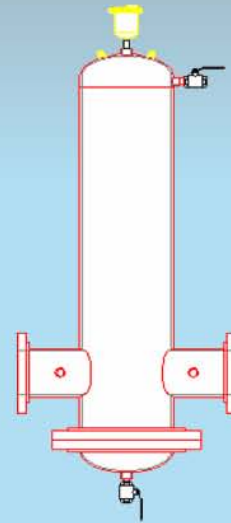
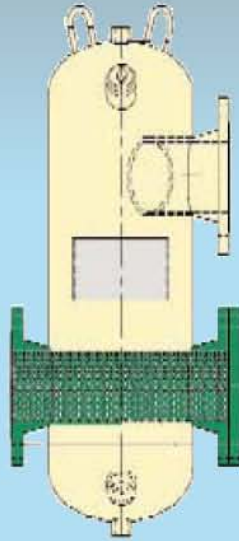


# FLO FAB

## AIR SEPARATOR

### Series SEP-T-F-(G)



[www.flofab.com](http://www.flofab.com)

Manufacturer of Pumps, Tanks, Heat Exchangers & Accessories  
for HVAC Market After-Sales Parts and Services

Air separator - SEP-T-F-(G)

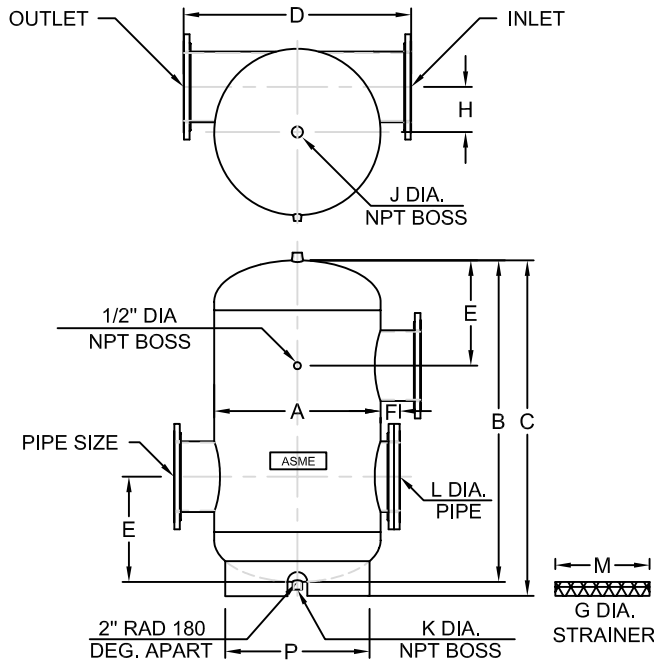
FLO FAB INC  
LAKE WORTH,  
FLORIDA, USA

# ASME TANGENTIAL AIR SEPARATORS

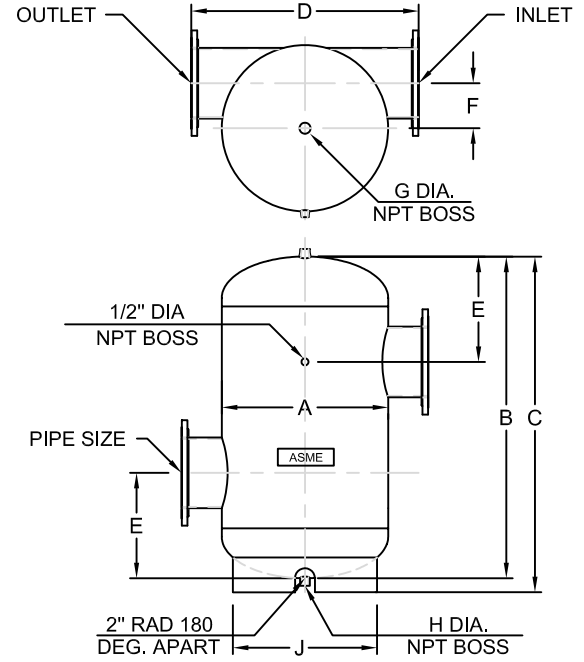
## SEP-T

- \* ASME CONSTRUCTED AND STAMPED
- \* 125 PSIG / 862 KPa DESIGN PRESSURE
- \* 375 F / 190 C MAXIMUM OPERATING TEMPERATURE
- \* CARBON STEEL CONSTRUCTION-PAINTED
- \* TANGENTIAL DESIGN RESULTS IN SMALLER UNIT
- \* PROVIDES AIR FREE FLUID FLOW WHICH PROTECTS AGAINST DAMAGE AND SYSTEM NOISE

- \* HELPS PREVENT WATER LOGGED COMPRESSION TANKS
- \* STAINLESS STEEL STRAINER
- \* 2" AND 2 1/2" PIPE SIZES ARE NPT
- \* 3" AND LARGER PIPE SIZES ARE FLANGED
- \* 2" AND 2 1/2" STRAINER INLET IS PIPE CAP
- \* EXTERNAL PRIMER FINISH
- \* 100% TESTED



**SEPARATOR WITH STRAINER (F4 or F6)**



**SEPARATOR WITHOUT STRAINER**

### DIMENSIONAL DATA

FLO FAB MODEL NUMBER	PIPE SIZE		WITH STRAINERS (F4 or F6) - DIMENSIONS IN INCHES													
			A	B	C	D	E	F	G	H	J	K	L	M	P	WEIGHT (LBS)
			IN	MM												
SEP-T-2	2	50	12	19 1/2	22 1/2	16 5/8	5 1/2	2 1/8	2	4 5/16	1 1/4	1	2	16 1/2	9 1/2	49
SEP-T-2 1/2	2 1/2	65	12	19 1/2	22 1/2	16 5/8	5 1/2	2 3/8	2 1/2	4 5/16	1 1/4	1	2 1/2	16 1/2	9 1/2	64
SEP-T-3-F	3	80	12	19 1/2	22 1/2	19 3/4	5 3/4	2 1/2	3	3 3/4	1 1/4	1	3	17 1/8	9 1/2	69
SEP-T-4-F	4	100	14	29	32	21 3/4	9 1/8	2 1/2	4	4 1/4	1 1/2	2	4	19 1/2	11 1/2	111
SEP-T-5-F	5	125	14	29	32	21 3/4	9 1/8	2 1/2	5	3 3/4	1 1/2	2	5	19 3/4	11 1/2	138
SEP-T-6-F	6	150	20	41	44	28	13 1/4	2 1/2	6	6 1/4	2	2	6	25	18	236
SEP-T-8-F	6	150	20	41	44	28	13 1/4	3	8	5 3/16	2	2	8	29	18	359

FLO FAB MODEL NUMBER	PIPE SIZE		WITHOUT STRAINERS - DIMENSIONS IN INCHES										
			A	B	C	D	E	F	G	H	J	APPROX. SHIPPING WEIGHT (LBS)	
			IN	MM									
SEP-T-2	2	50	12	19 1/2	22 1/2	16 5/8	5 1/2	4 5/16	1 1/4	1	9 1/2	41	
SEP-T-2 1/2	2 1/2	65	12	19 1/2	22 1/2	16 5/8	5 1/2	4 5/16	1 1/4	1	9 1/2	56	
SEP-T-3-F	3	80	12	19 1/2	22 1/2	19 3/4	5 3/4	3 3/4	1 1/4	1	9 1/2	59	
SEP-T-4-F	4	100	14	29	32	21 3/4	9 1/8	4 1/4	1 1/2	2	11 1/2	97	
SEP-T-5-F	5	125	14	29	32	21 3/4	9 1/8	3 3/4	1 1/2	2	11 1/2	118	
SEP-T-6-F	6	150	20	41	44	28	13 1/4	6 1/4	2	2	18	201	
SEP-T-8-F	8	200	20	41	44	28	13 1/4	5 3/16	2	2	18	299	

ALL DIMENSIONS ARE SUBJECT TO CHANGE WITHOUT NOTICE

#### OPTIONS

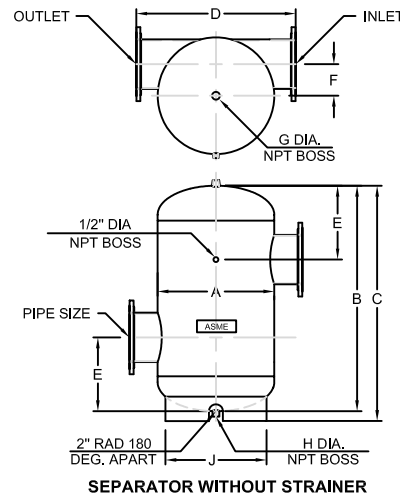
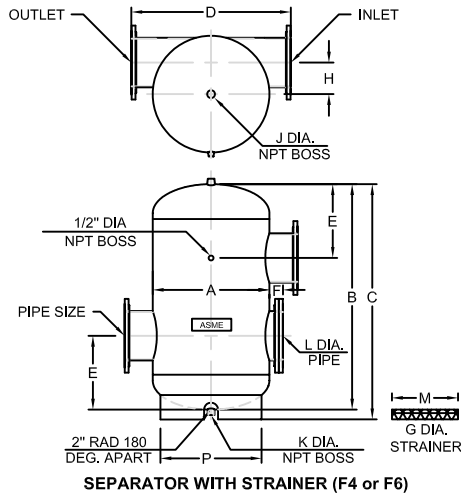
- EXTERNAL EPOXY FINISH (SUFFIX C)
- 304 STAINLESS STEEL STRAINER (SUFFIX F4)
- 316 STAINLESS STEEL STRAINER (SUFFIX F6)
- ANGLE LEGS (SUFFIX L)
- OTHER DESIGNED PRESSURES  
\_\_\_\_\_ PSI ( \_\_\_\_\_ KPa) (SUFFIX SPE)

# ASME TANGENTIAL AIR SEPARATORS

## SEP-T

- \* ASME CONSTRUCTED AND STAMPED
- \* 150 PSIG / 1034 KPa DESIGN PRESSURE
- \* 375 F / 190 C MAXIMUM OPERATING TEMPERATURE
- \* CARBON STEEL CONSTRUCTION-PAINTED
- \* TANGENTIAL DESIGN RESULTS IN SMALLER UNIT
- \* PROVIDES AIR FREE FLUID FLOW WHICH PROTECTS AGAINST DAMAGE AND SYSTEM NOISE

- \* HELPS PREVENT WATER LOGGED COMPRESSION TANKS
- \* STAINLESS STEEL STRAINER
- \* ALL PIPE SIZES ARE FLANGED
- \* EXTERNAL PRIMER FINISH
- \* 100% TESTED



### DIMENSIONAL DATA

FLO FAB MODEL NUMBER	PIPE SIZE		WITH STRAINERS (F4 or F6) - DIMENSIONS IN INCHES													WEIGHT (LBS)
			A	B	C	D	E	F	G	H	J	K	L	M	P	
			IN	MM												
<input type="checkbox"/> SEP-T-10-F	10	250	30	58	60 1/2	41	19	3 1/2	10	9 1/8	2	2	10	25 1/2	24	663
<input type="checkbox"/> SEP-T-12-F	12	300	30	58	60 1/2	41	19	3 1/2	12	8 1/8	2	2	12	26 1/2	24	747
<input type="checkbox"/> SEP-T-14-F	14	350	36	75 1/2	78	46 3/8	22	3 1/2	14	10 3/16	2	2	14	42 1/4	30	1493
<input type="checkbox"/> SEP-T-16-F																
<input type="checkbox"/> SEP-T-18-F																
<input type="checkbox"/> SEP-T-20-F																
<input type="checkbox"/> SEP-T-22-F																
<input type="checkbox"/> SEP-T-24-F																
<input type="checkbox"/> SEP-T-26-F																
<input type="checkbox"/> SEP-T-28-F																
<input type="checkbox"/> SEP-T-30-F																

FLO FAB MODEL NUMBER	PIPE SIZE		WITHOUT STRAINERS - DIMENSIONS IN INCHES											APPROX. SHIPPING WEIGHT (LBS)
			A	B	C	D	E	F	G	H	J			
			IN	MM										
<input type="checkbox"/> SEP-T-10-F	10	250	30	58	60 1/2	41	19	9 1/8	2	2	24	563		
<input type="checkbox"/> SEP-T-12-F	12	300	30	58	60 1/2	41	19	8 1/8	2	2	24	647		
<input type="checkbox"/> SEP-T-14-F	14	350	36	75 1/2	78	46 3/8	22	10 3/16	2	2	30	1366		
<input type="checkbox"/> SEP-T-16-F														
<input type="checkbox"/> SEP-T-18-F														
<input type="checkbox"/> SEP-T-20-F														
<input type="checkbox"/> SEP-T-22-F														
<input type="checkbox"/> SEP-T-24-F														
<input type="checkbox"/> SEP-T-26-F														
<input type="checkbox"/> SEP-T-28-F														
<input type="checkbox"/> SEP-T-30-F														

ALL DIMENSIONS ARE SUBJECT TO CHANGE WITHOUT NOTICE

#### OPTIONS

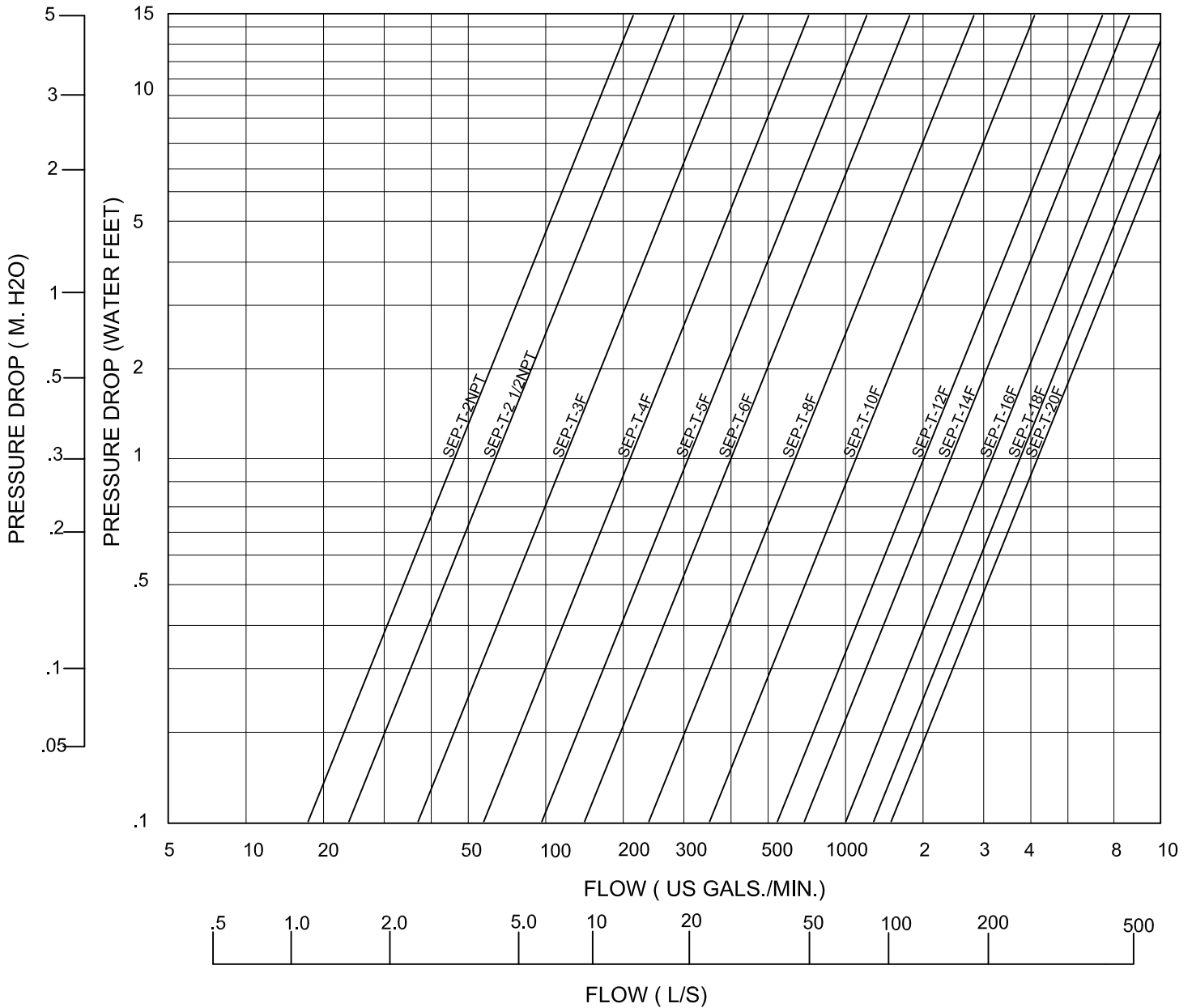
- EXTERNAL EPOXY FINISH (SUFFIX C)
- 304 STAINLESS STEEL STRAINER (SUFFIX F4)
- 316 STAINLESS STEEL STRAINER (SUFFIX F6)
- ANGLE LEGS (SUFFIX L)
- OTHER DESIGNED PRESSURES \_\_\_\_\_ PSI ( \_\_\_\_\_ KPa) (SUFFIX SPE)



**SEP-T**

**PERFORMANCE CURVE**

**TANGENTIAL AIR SEPARATOR**

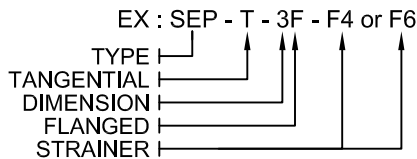
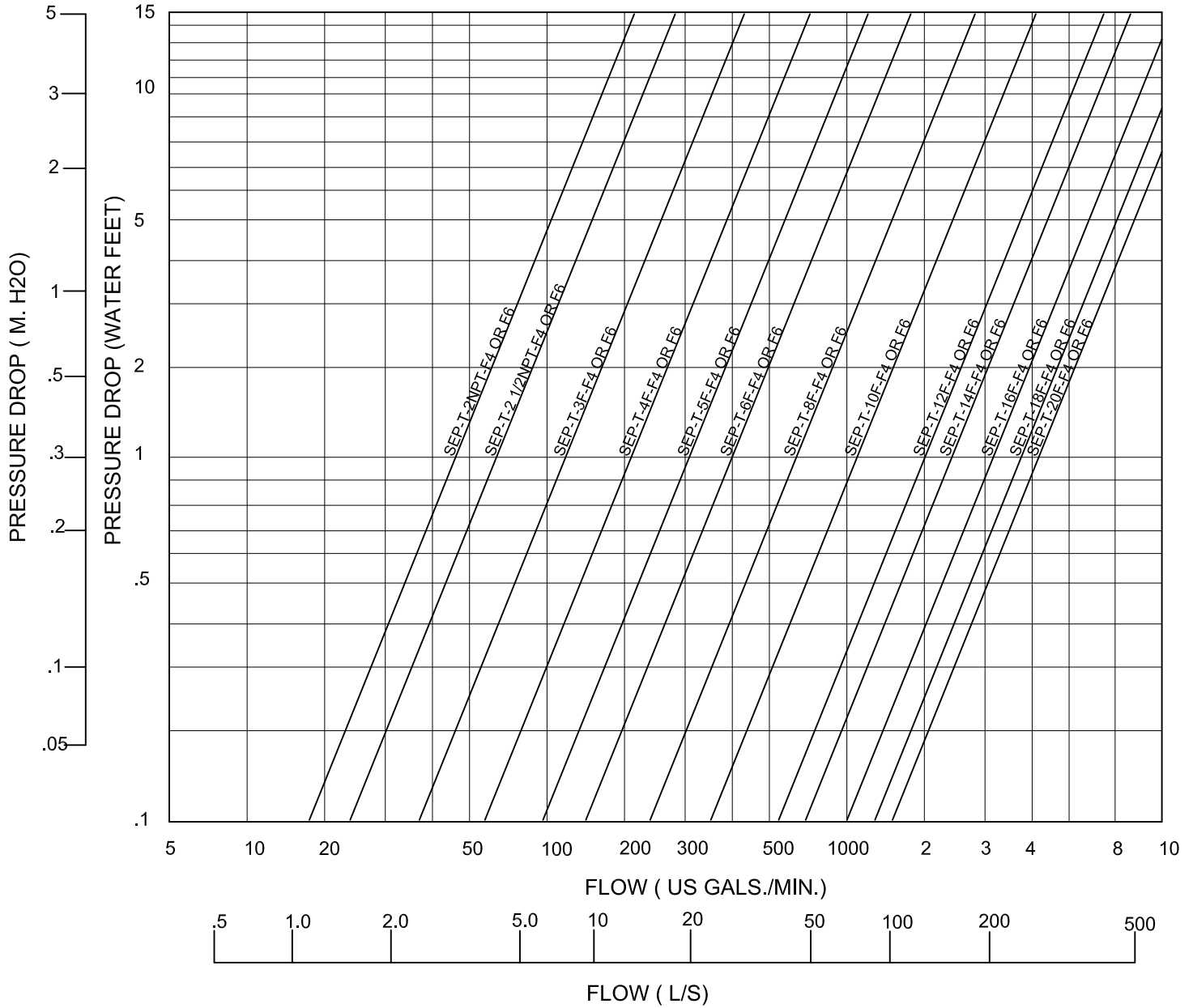


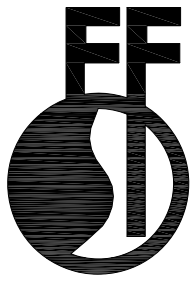
EX : SEP - T - 3F - F4 or F6  
 TYPE |  
 TANGENTIAL |  
 DIMENSION |  
 FLANGED |  
 STRAINER |



**PERFORMANCE CURVE**

**TANGENTIAL AIR SEPARATOR WITH STRAINER**





# FLO FAB

SUBMITTAL SHEET  
 ISSUE DATE: 2008/04/21  
 REVISION DATE: 2008/11/24  
 SECTION: 8

## AIR & DIRT SEPARATOR WITH FIXED MEDIUM MODELS: ADSF-2 TO ADSF-12

UNIT TAG NO.: _____	ORDER NO. _____
ENGINEER: _____	SUBMITTED BY _____ DATE _____
FLO FAB REPRESENTATIVE: _____	APPROVED BY _____ DATE _____

### DESCRIPTION

FLO FAB ADSF SERIES AIR & DIRT SEPARATORS ARE DESIGNED TO ELIMINATE ENTRAINED AIR AND SEPARATE DEBRIS ASSOCIATED WITH START-UP AND MAINTENANCE OF ANY HYDRONIC SYSTEM. THE DESIGN INCORPORATES A SKIM VALVE, USED TO ELIMINATE FLOATING DEBRIS, A REMOVABLE END COVER FOR COALESCING MEDIUM ACCESS, AND AN AIR VENT TO AUTOMATICALLY RELEASE AIR FROM THE SEPARATOR. THE DESIGN AND CONSTRUCTION CONFORMS TO ASME SECTION VIII, DIV.1

### CONSTRUCTION

SHELL: CARBON STEEL  
 COALESCING MEDIUM: STAINLESS STEEL  
 BLOW DOWN VALVE (OPTIONAL): BRONZE  
 SKIM VALVE (OPTIONAL): BRONZE  
 VENT (OPTIONAL): STAINLESS STEEL

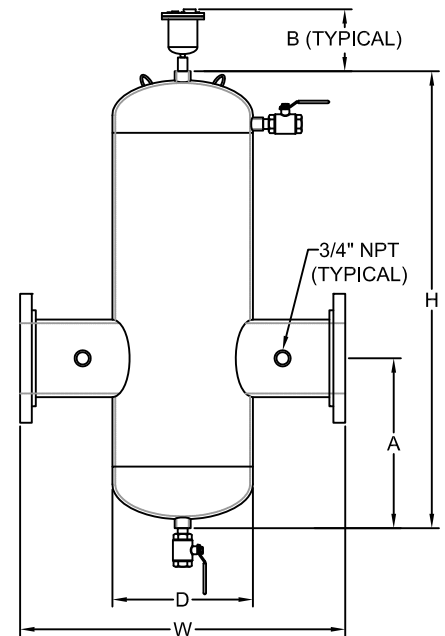
### PERFORMANCE LIMITATIONS

MAXIMUM DESIGN TEMPERATURE: 250°F  
 MAXIMUM DESIGN PRESSURE: 150 PSIG

### DIMENSIONS AND WEIGHTS

MODEL	CONN. SIZE	FLOW GPM	D (IN.)	H (IN.)	W (IN.)	A (IN.)	B (IN.)	WT LBS.
ADSF-2-F	2 FLG.	46		23	15-1/4	11-1/2	8-5/8	100
ASDF-2-FNPT	2 NPT.	46		23	10-3/8	11-1/2	8-5/8	90
ADSF-2.5-F	2-1/2 FLG.	72		23	15-3/4	11-1/2	8-5/8	125
ADSF-2.5-FNPT	2-1/2 NPT.	72		23	11	11-1/2	8-5/8	115
ADSF-3-F	3 FLG.	96		29	20-1/4	14-1/2	8-5/8	150
ADSF-3-FNPT	3 NPT.	96		29	12-1/2	14-1/2	8-5/8	130
ADSF-4-F	4 FLG.	170		29	20-5/8	14-1/2	8-5/8	250
ADSF-5-F	5 FLG.	265		39	27-3/4	19-1/2	8-5/8	310
ADSF-6-F	6 FLG.	380		39	27-3/4	19-1/2	8-5/8	375
ADSF-8-F	8 FLG.	630		49	33-5/8	24-1/2	8-5/8	700
ADSF-10-F	10 FLG.	960		65	37-1/2	32-1/2	8-5/8	1000
ADSF-12-F	12 FLG.	1400		76	42-1/2	38	8-5/8	1500

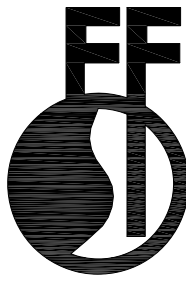
**NOTE: LARGER SIZES ARE AVAILABLE UP TO 36 INCHES.**



### SPECIFICATION

FURNISH AND INSTALL ON THE PLANS AND DESCRIBED HEREIN, A FLO FAB-VENT ADSF AIR & DIRT SEPARATOR AS MANUFACTURED BY FLO FAB COMPANY. EACH SEPARATOR MUST BE DESIGNED WITH A BLOWDOWN VALVE, SKIM VALVE, AND AUTOMATIC AIR VENT. THE SEPARATOR MUST ALSO UTILIZE IN ITS DESIGN A STAINLESS STEEL COALESCING MEDIUM TO AID IN THE SEPARATION OF AIR AND DIRT IN THE SYSTEM ENTRAINED WATER. THE SEPARATOR MUST BE CONSTRUCTED IN ACCORDANCE WITH THE LATEST REVISION OF THE ASME BOILER AND PRESSURE VESSEL CODE AND STAMPED 150 PSI WORKING PRESSURE.

EACH SEPARATOR SHALL BE FLO FAB MODEL ADSF-\_\_\_\_\_ OR APPROVED EQUAL.



# FLO FAB

SUBMITTAL SHEET  
 ISSUE DATE: 2008/04/21  
 REVISION DATE: 2008/11/24  
 SECTION: 8

## "HIGH VELOCITY" AIR & DIRT SEPARATOR WITH FIXED MEDIUM MODELS: ADSF-HV-2 TO ADSF-HV-12

UNIT TAG NO.: _____	ORDER NO. _____
ENGINEER: _____	SUBMITTED BY _____ DATE _____
FLO FAB REPRESENTATIVE: _____	APPROVED BY _____ DATE _____

### DESCRIPTION

FLO FAB ADSF-HV (HIGH VELOCITY) SERIES AIR & DIRT SEPARATORS ARE DESIGNED TO ELIMINATE ENTRAINED AIR AND SEPARATE DEBRIS ASSOCIATED WITH START-UP AND MAINTENANCE OF ANY HYDRONIC SYSTEM. THE DESIGN INCORPORATES A SKIM VALVE, USED TO ELIMINATE FLOATING DEBRIS, A REMOVABLE END COVER FOR COALESCING MEDIUM ACCESS, AND AN AIR VENT TO AUTOMATICALLY RELEASE AIR FROM THE SEPARATOR. THE DESIGN AND CONSTRUCTION CONFORMS TO ASME SECTION VIII, DIV.1

### CONSTRUCTION

SHELL: CARBON STEEL  
 COALESCING MEDIUM: STAINLESS STEEL  
 BLOW DOWN VALVE (OPTIONAL): BRONZE  
 SKIM VALVE (OPTIONAL): BRONZE  
 VENT (OPTIONAL): STAINLESS STEEL

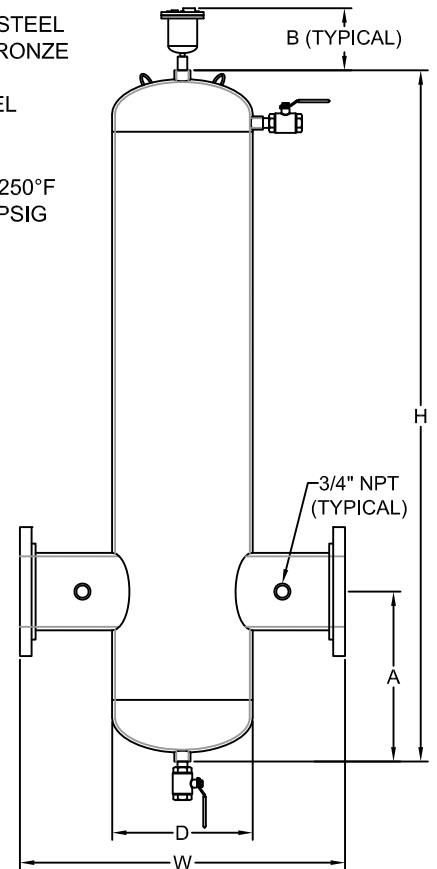
### PERFORMANCE LIMITATIONS

MAXIMUM DESIGN TEMPERATURE: 250°F  
 MAXIMUM DESIGN PRESSURE: 150 PSIG

### DIMENSIONS AND WEIGHTS

MODEL	CONN. SIZE	FLOW GPM	D (IN.)	H (IN.)	W (IN.)	A (IN.)	B (IN.)	WT LBS.
ADSF-HV-2-F	2 FLG.	105	4-1/2	33	15-1/4	11-1/2	8-5/8	110
ADSF-HV-2-FNPT	2 NPT.	105	4-1/2	33	10-3/8	11-1/2	8-5/8	100
ADSF-HV-2.5-F	2-1/2 FLG.	155	5-9/16	33	15-3/4	11-1/2	8-5/8	140
ADSF-HV-2.5-FNPT	2-1/2 NPT.	155	5-9/16	33	11	11-1/2	8-5/8	125
ADSF-HV-3-F	3 FLG.	225	6-5/8	42	20-1/4	14-1/2	8-5/8	175
ADSF-HV-3-FNPT	3 NPT.	225	6-5/8	42	12-1/2	14-1/2	8-5/8	155
ADSF-HV-4-F	4 FLG.	405	8-5/8	42	20-5/8	14-1/2	8-5/8	275
ADSF-HV-5-F	5 FLG.	630	10-3/4	59	27-3/4	19-1/2	8-5/8	475
ADSF-HV-6-F	6 FLG.	910	12-3/4	59	27-3/4	19-1/2	8-5/8	525
ADSF-HV-8-F	8 FLG.	1610	16	75	33-5/8	24-1/2	8-5/8	825
ADSF-HV-10-F	10 FLG.	2450	20	92	37-1/2	32-1/2	8-5/8	1275
ADSF-HV-12-F	12 FLG.	3500	24	110	42-1/2	38	8-5/8	2050

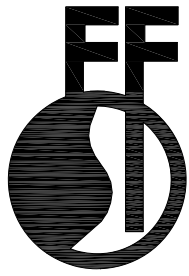
**NOTE: LARGER SIZES ARE AVAILABLE UP TO 36 INCHES.**



### SPECIFICATION

FURNISH AND INSTALL ON THE PLANS AND DESCRIBED HEREIN, A FLO FAB-VENT ADSF-HV (HIGH VELOCITY) AIR & DIRT SEPARATOR AS MANUFACTURED BY FLO FAB COMPANY. EACH SEPARATOR MUST BE DESIGNED WITH A BLOWDOWN VALVE, SKIM VALVE, AND AUTOMATIC AIR VENT. THE SEPARATOR MUST ALSO UTILIZE IN ITS DESIGN A STAINLESS STEEL COALESCING MEDIUM TO AID IN THE SEPARATION OF AIR AND DIRT IN THE SYSTEM ENTRAINED WATER. THE SEPARATOR MUST BE CONSTRUCTED IN ACCORDANCE WITH THE LATEST REVISION OF THE ASME BOILER AND PRESSURE VESSEL CODE AND STAMPED 150 PSI WORKING PRESSURE.

EACH SEPARATOR SHALL BE FLO FAB MODEL ADSF-HV-\_\_\_\_\_ OR APPROVED EQUAL.



# FLO FAB

SUBMITTAL SHEET  
 ISSUE DATE: 2008/04/21  
 REVISION DATE: 2008/04/21  
 SECTION: 8

## AIR & DIRT SEPARATOR WITH REMOVABLE MEDIUM

MODELS: ADSR-2 TO ADSR-12

UNIT TAG NO.: \_\_\_\_\_

ORDER NO. \_\_\_\_\_

ENGINEER: \_\_\_\_\_

SUBMITTED BY \_\_\_\_\_ DATE \_\_\_\_\_

FLO FAB REPRESENTATIVE: \_\_\_\_\_

APPROVED BY \_\_\_\_\_ DATE \_\_\_\_\_

### DESCRIPTION

FLO FAB ADSR SERIES AIR & DIRT SEPARATORS ARE DESIGNED TO ELIMINATE ENTRAINED AIR AND SEPARATE DEBRIS ASSOCIATED WITH START-UP AND MAINTENANCE OF ANY HYDRONIC SYSTEM. THE DESIGN INCORPORATES A SKIM VALVE, USED TO ELIMINATE FLOATING DEBRIS, A REMOVABLE END COVER FOR COALESCING MEDIUM ACCESS, AND AN AIR VENT TO AUTOMATICALLY RELEASE AIR FROM THE SEPARATOR. THE DESIGN AND CONSTRUCTION CONFORMS TO ASME SECTION VIII, DIV.1

### CONSTRUCTION

SHELL: CARBON STEEL  
 COALESCING MEDIUM: STAINLESS STEEL  
 BLOW DOWN VALVE (OPTIONAL): BRONZE  
 SKIM VALVE (OPTIONAL): BRONZE  
 VENT (OPTIONAL): STAINLESS STEEL

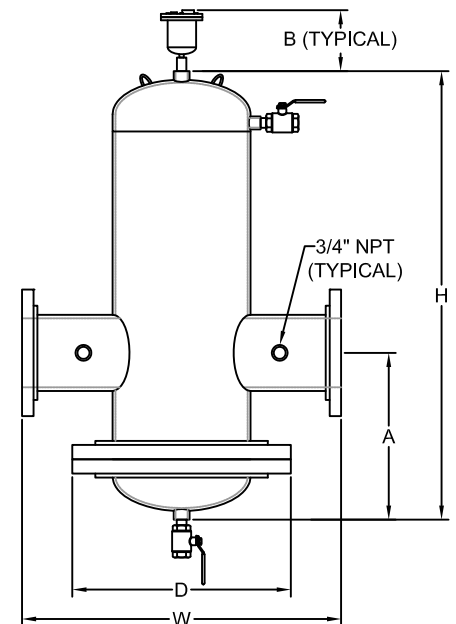
### PERFORMANCE LIMITATIONS

MAXIMUM DESIGN TEMPERATURE: 250°F  
 MAXIMUM DESIGN PRESSURE: 150 PSIG

### DIMENSIONS AND WEIGHTS

MODEL	CONN. SIZE	FLOW GPM	D (IN.)	H (IN.)	W (IN.)	A (IN.)	B (IN.)	WT LBS.
ADSR-2-F	2 FLG.	46	9	23	15-1/4	11-1/2	8-5/8	100
ADSR-2-FNPT	2 NPT.	46	9	23	10-3/8	11-1/2	8-5/8	90
ADSR-2.5-F	2-1/2 FLG.	72	10	23	15-3/4	11-1/2	8-5/8	125
ADSR-2.5-FNPT	2-1/2 NPT.	72	10	23	11	11-1/2	8-5/8	115
ADSR-3-F	3 FLG.	96	11	29	20-1/4	14-1/2	8-5/8	150
ADSR-3-FNPT	3 NPT.	96	11	29	12-1/2	14-1/2	8-5/8	130
ADSR-4-F	4 FLG.	170	13-1/2	29	20-5/8	14-1/2	8-5/8	250
ADSR-5-F	5 FLG.	265	16	39	27-3/4	19-1/2	8-5/8	310
ADSR-6-F	6 FLG.	380	19	39	27-3/4	19-1/2	8-5/8	375
ADSR-8-F	8 FLG.	630	23-1/2	49	33-5/8	24-1/2	8-5/8	700
ADSR-10-F	10 FLG.	960	27-1/2	65	37-1/2	32-1/2	8-5/8	1000
ADSR-12-F	12 FLG.	1400	32	76	42-1/2	38	8-5/8	1500

NOTE: LARGER SIZES ARE AVAILABLE UP TO 36 INCHES.

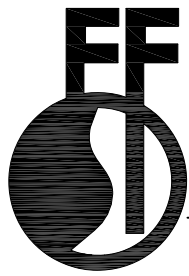


### SPECIFICATION

FURNISH AND INSTALL ON THE PLANS AND DESCRIBED HEREIN, A FLO FAB-VENT ADSR AIR & DIRT SEPARATOR AS MANUFACTURED BY FLO FAB COMPANY. EACH SEPARATOR MUST BE DESIGNED WITH A BLOWDOWN VALVE, SKIM VALVE, AND AUTOMATIC AIR VENT. THE SEPARATOR MUST ALSO UTILIZE IN ITS DESIGN A STAINLESS STEEL COALESCING MEDIUM TO AID IN THE SEPARATION OF AIR AND DIRT IN THE SYSTEM ENTRAINED WATER. THE SEPARATOR MUST BE CONSTRUCTED IN ACCORDANCE WITH THE LATEST REVISION OF THE ASME BOILER AND PRESSURE VESSEL CODE AND STAMPED 150 PSI WORKING PRESSURE.

EACH SEPARATOR SHALL BE FLO FAB MODEL ADSR-\_\_\_\_\_ OR APPROVED EQUAL.





# FLO FAB

SUBMITTAL SHEET  
 ISSUE DATE: 2008/04/21  
 REVISION DATE: 2008/11/24  
 SECTION: 8

## "HIGH VELOCITY" AIR & DIRT SEPARATOR WITH REMOVABLE MEDIUM MODELS: ADSR-HV-2 TO ADSR-HV-12

UNIT TAG NO.: \_\_\_\_\_

ORDER NO. \_\_\_\_\_

ENGINEER: \_\_\_\_\_

SUBMITTED BY \_\_\_\_\_ DATE \_\_\_\_\_

FLO FAB REPRESENTATIVE: \_\_\_\_\_

APPROVED BY \_\_\_\_\_ DATE \_\_\_\_\_

### DESCRIPTION

FLO FAB ADSR-HV (HIGH VELOCITY) SERIES AIR & DIRT SEPARATORS ARE DESIGNED TO ELIMINATE ENTRAINED AIR AND SEPARATE DEBRIS ASSOCIATED WITH START-UP AND MAINTENANCE OF ANY HYDRONIC SYSTEM. THE DESIGN INCORPORATES A SKIM VALVE, USED TO ELIMINATE FLOATING DEBRIS, A REMOVABLE END COVER FOR COALESCING MEDIUM ACCESS, AND AN AIR VENT TO AUTOMATICALLY RELEASE AIR FROM THE SEPARATOR. THE DESIGN AND CONSTRUCTION CONFORMS TO ASME SECTION VIII, DIV.1

### CONSTRUCTION

SHELL: CARBON STEEL  
 COALESCING MEDIUM: STAINLESS STEEL  
 BLOW DOWN VALVE (OPTIONAL): BRONZE  
 SKIM VALVE (OPTIONAL): BRONZE  
 VENT (OPTIONAL): STAINLESS STEEL

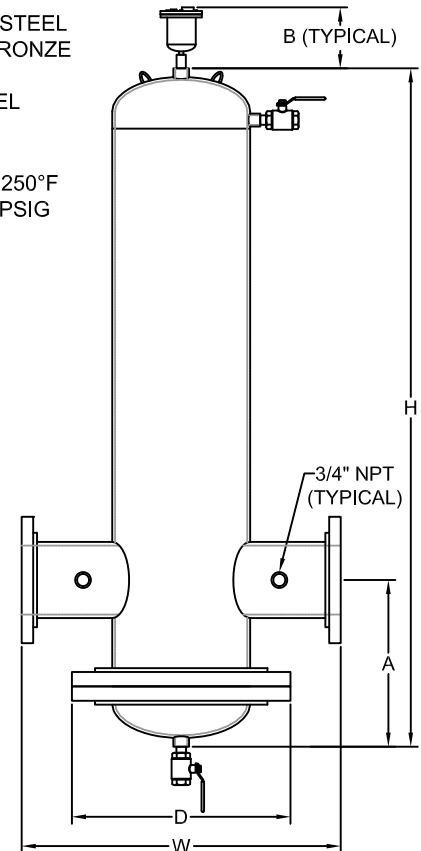
### PERFORMANCE LIMITATIONS

MAXIMUM DESIGN TEMPERATURE: 250°F  
 MAXIMUM DESIGN PRESSURE: 150 PSIG

### DIMENSIONS AND WEIGHTS

MODEL	CONN. SIZE	FLOW GPM	D (IN.)	H (IN.)	W (IN.)	A (IN.)	B (IN.)	WT LBS.
ADSR-HV-2-F	2 FLG.	105	9	33	15-1/4	11-1/2	8-5/8	110
ADSR-HV-2-FNPT	2 NPT.	105	9	33	10-3/8	11-1/2	8-5/8	100
ADSR-HV-2.5-F	2-1/2 FLG.	155	10	33	15-3/4	11-1/2	8-5/8	140
ADSR-HV-2.5-FNPT	2-1/2 NPT.	155	10	33	11	11-1/2	8-5/8	125
ADSR-HV-3-F	3 FLG.	225	11	42	20-1/4	14-1/2	8-5/8	175
ADSR-HV-3-FNPT	3 NPT.	225	11	42	12-1/2	14-1/2	8-5/8	155
ADSR-HV-4-F	4 FLG.	405	13-1/2	42	20-5/8	14-1/2	8-5/8	275
ADSR-HV-5-F	5 FLG.	630	16	59	27-3/4	19-1/2	8-5/8	475
ADSR-HV-6-F	6 FLG.	910	19	59	27-3/4	19-1/2	8-5/8	525
ADSR-HV-8-F	8 FLG.	1610	23-1/2	75	33-5/8	24-1/2	8-5/8	825
ADSR-HV-10-F	10 FLG.	2450	27-1/2	92	37-1/2	32-1/2	8-5/8	1275
ADSR-HV-12-F	12 FLG.	3500	32	110	42-1/2	38	8-5/8	2050

NOTE: LARGER SIZES ARE AVAILABLE UP TO 36 INCHES.



### SPECIFICATION

FURNISH AND INSTALL ON THE PLANS AND DESCRIBED HEREIN, A FLO FAB-VENT ADSR-HV (HIGH VELOCITY) AIR & DIRT SEPARATOR AS MANUFACTURED BY FLO FAB COMPANY. EACH SEPARATOR MUST BE DESIGNED WITH A BLOWDOWN VALVE, SKIM VALVE, AND AUTOMATIC AIR VENT. THE SEPARATOR MUST ALSO UTILIZE IN ITS DESIGN A STAINLESS STEEL COALESCING MEDIUM TO AID IN THE SEPARATION OF AIR AND DIRT IN THE SYSTEM ENTRAINED WATER. THE SEPARATOR MUST BE CONSTRUCTED IN ACCORDANCE WITH THE LATEST REVISION OF THE ASME BOILER AND PRESSURE VESSEL CODE AND STAMPED 150 PSI WORKING PRESSURE.

EACH SEPARATOR SHALL BE FLO FAB MODEL ADSR-HV-\_\_\_\_\_ OR APPROVED EQUAL.

# For Future Use

# For Future Use

FF

# FLO FAB



**Manufacturer of Pumps, Tanks, Heat Exchangers & Accessories  
for HVAC Market After-Sales Parts and Services**

[www.flofab.com](http://www.flofab.com)

FLO-FAB INC  
LAKE WORTH,  
FLORIDA, USA

SEPTEMBER 2009