

FLO FAB

CUSTOM TANK

CUS



Manufacturer of Pumps, Tanks, Heat Exchangers & Accessories
for HVAC Market After-Sales Parts and Services

Expansion Tanks - CUS

www.flofab.com

FLO FAB INC
LAKE WORTH,
FLORIDA, USA

ASME Tanks CUS Series

PLAIN STEEL EXPANSION TANK

- Constructed in accordance with the ASME, Section VIII, Div. 1
- Constructed in accordance with CSA B.51
- Designed pressure of 125 PSI (862 kPa)
- Designed temperature of 240°F (115°C)
- Carbon steel construction
- No bladder inside

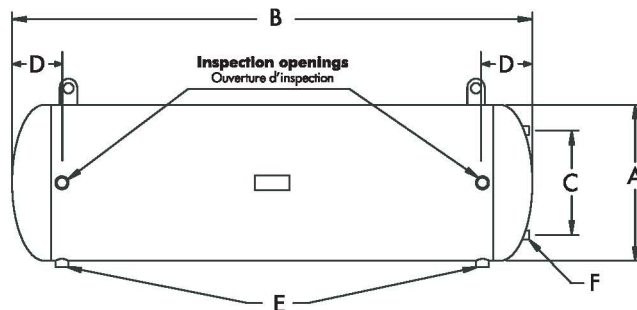


OPTIONS:

- Antiseismic brackets
- External epoxy finish
- Horizontal with saddles floor mounting
- Horizontal with straps ceiling mounting tank
- 150 psi rating
- 200 psi rating
- 500 psi rating

DIMENSIONS

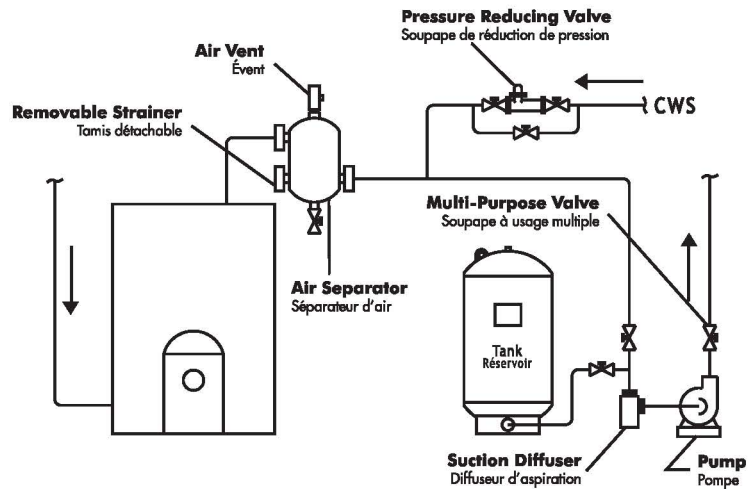
Models Modèles	Total Volume Volume total		A X B		C		D		E (NPT)		F (NPT)		Weight Poids	
	gal gal	L L	in X in po X po	mm X mm mm X mm	in po	mm mm	in po	mm mm	in po	mm mm	in po	mm mm	Lbs lb	kg kg
CUS-1234	16	62	12 X 34	305 X 864	10	254	7	178	1	25	1/2	12.7	75	34
CUS-1250	24	91	12 X 50	305 X 1270	10	254	7	178	1	25	1/2	12.7	110	50
CUS-1636	30	114	16 X 36	406 X 914	12	305	8	203	1	25	1/2	12.7	105	47
CUS-1647	40	151	16 X 47	406 X 1194	12	305	8	203	1	25	1/2	12.7	137	62
CUS-1670	60	227	16 X 70	406 X 1778	12	305	8	203	1	25	1/2	12.7	205	93
CUS-2061	80	303	20 X 61	508 X 1549	18	457	10	254	1	25	1/2	12.7	230	105
CUS-2076	100	379	20 X 76	508 X 1930	18	457	10	254	1	25	1/2	12.7	284	129
CUS-2464	120	454	24 X 64	610 X 1626	20	508	10 1/2	267	1	25	1/2	12.7	297	135
CUS-2472	135	511	24 X 72	610 X 1829	20	508	10 1/2	267	1	25	1/2	12.7	333	151
CUS-3062	175	662	30 X 62	762 X 1575	24	610	12	305	1 1/2	38	1/2	12.7	353	161
CUS-3076	220	833	30 X 76	762 X 1930	24	610	12	305	1 1/2	38	1/2	12.7	471	214
CUS-3083	240	909	30 X 83	762 X 2108	24	610	12	305	1 1/2	38	1/2	12.7	506	230
CUS-30104	305	1155	30 X 104	762 X 2642	24	610	12	305	1 1/2	38	1/2	12.7	623	283
CUS-3692	385	1457	36 X 92	914 X 2337	30	762	16	406	1 1/2	38	1/2	12.7	894	406
CUS-3696	400	1514	36 X 96	914 X 2438	30	762	16	406	1 1/2	38	1/2	12.7	923	420
CUS-4872	505	1912	48 X 72	1220 X 1829	42	1067	20	508	1 1/2	38	1/2	12.7	1512	687
CUS-4874	525	1987	48 X 74	1220 X 1880	42	1067	20	508	2	50	1/2	12.7	1552	705
CUS-6070	750	2839	60 X 70	1524 X 1778	54	1372	22	560	2	50	1/2	12.7	1975	898
CUS-6091	1000	3785	60 X 91	1524 X 2311	54	1372	22	560	2	50	1/2	12.7	2426	1103
CUS-60131	1500	5678	60 X 131	1524 X 3327	54	1372	22	560	2	50	1/2	12.7	3326	1512
CUS-60172	2000	7570	60 X 172	1524 X 4369	54	1372	22	560	2	50	1/2	12.7	4225	1921



Détails d'installation/Installation Details

SIMPLE INSTALLATION

INSTALLATION SIMPLE

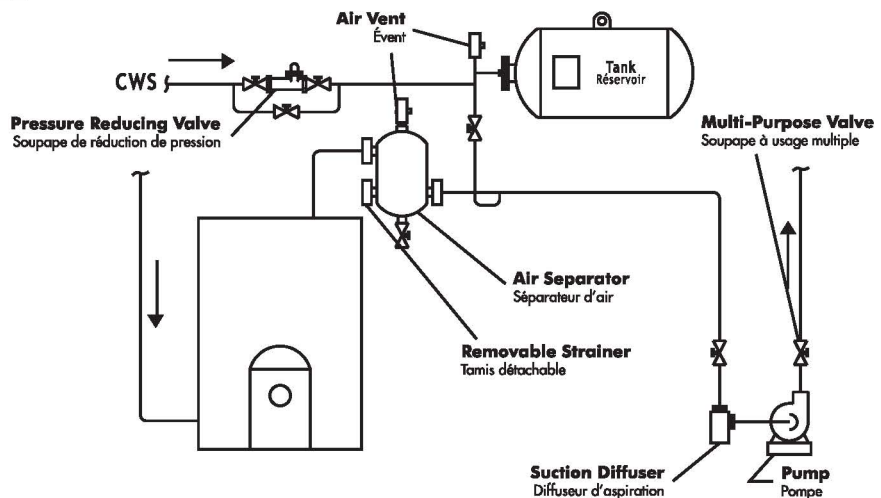


HORIZONTAL INSTALLATION

(OPTIONAL)

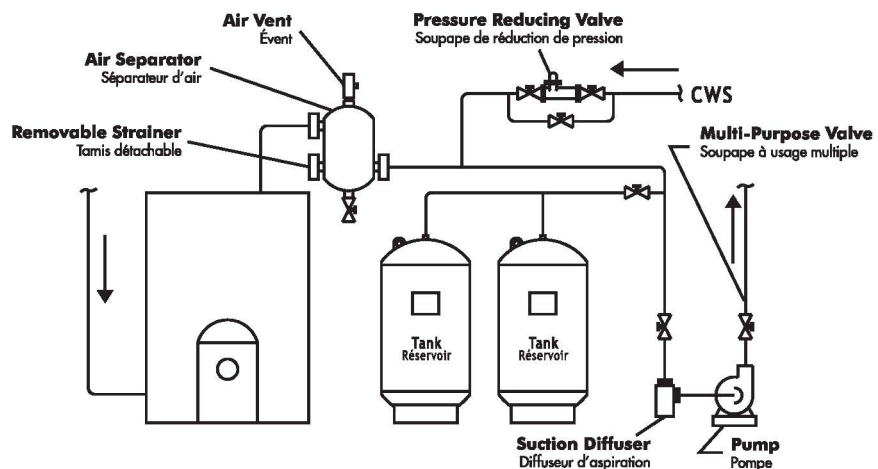
INSTALLATION HORIZONTALE

(OPTIONNELLE)



MULTI INSTALLATION

INSTALLATION MULTIPLE



FF

FLO FAB



**Manufacturer of Pumps, Tanks, Heat Exchangers & Accessories
for HVAC Market After-Sales Parts and Services**

www.flofab.com

FLO-FAB INC
LAKE WORTH,
FLORIDA, USA

SEPTEMBER 2009