

CIRCULATING PUMPS

Series 500



FLO FAB

www.flofab.com

Company profile

Flo Fab is a company which specialized in manufacturing and selling various pumps, tanks, and heat exchangers and its accessories. Our Factory occupies 30 thousand square feet, on 130 thousand square feet of land which is located in Bois-des-Filion

Quebec Canada. It

has a convenient transportation on major highways and is approximately 20 kilometers north of the city of Montreal. Our company pays great attention to product quality and the construction of quality management system. Our factory has been in business for more than 40 years.

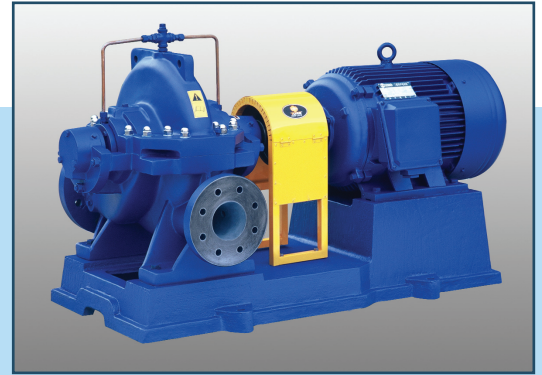
Our company has over 50 employees including, engineering, designers, R & D and quality control department. The products manufactured are strictly in accordance to standard and every pump is guaranteed to be tested and qualified before being shipped. All tanks and heat exchangers are ASME certified and also tested before being release for shipment.

Our product range covers more than one thousand types over 15 series such as clear water supply, air conditioning, chemical, drainage, sewage handling, boiler feed, condensing, chilled water, heating pumps for municipal, power stations, chemical industry and new or existing buildings.

Our company is not only on track but finds out and designs with the new technology and new products, we devote ourselves in

developing new pumping products especially in vertical inline pumps. In recent years we are the first to launch the ZDRI and XRI horizontal, vertical pumps to easy-disassemble these pumps while not removing the pump from the pipeline and also not removing the electric motor.

We will respond to our customers with new and excellent products.



Content

General Data

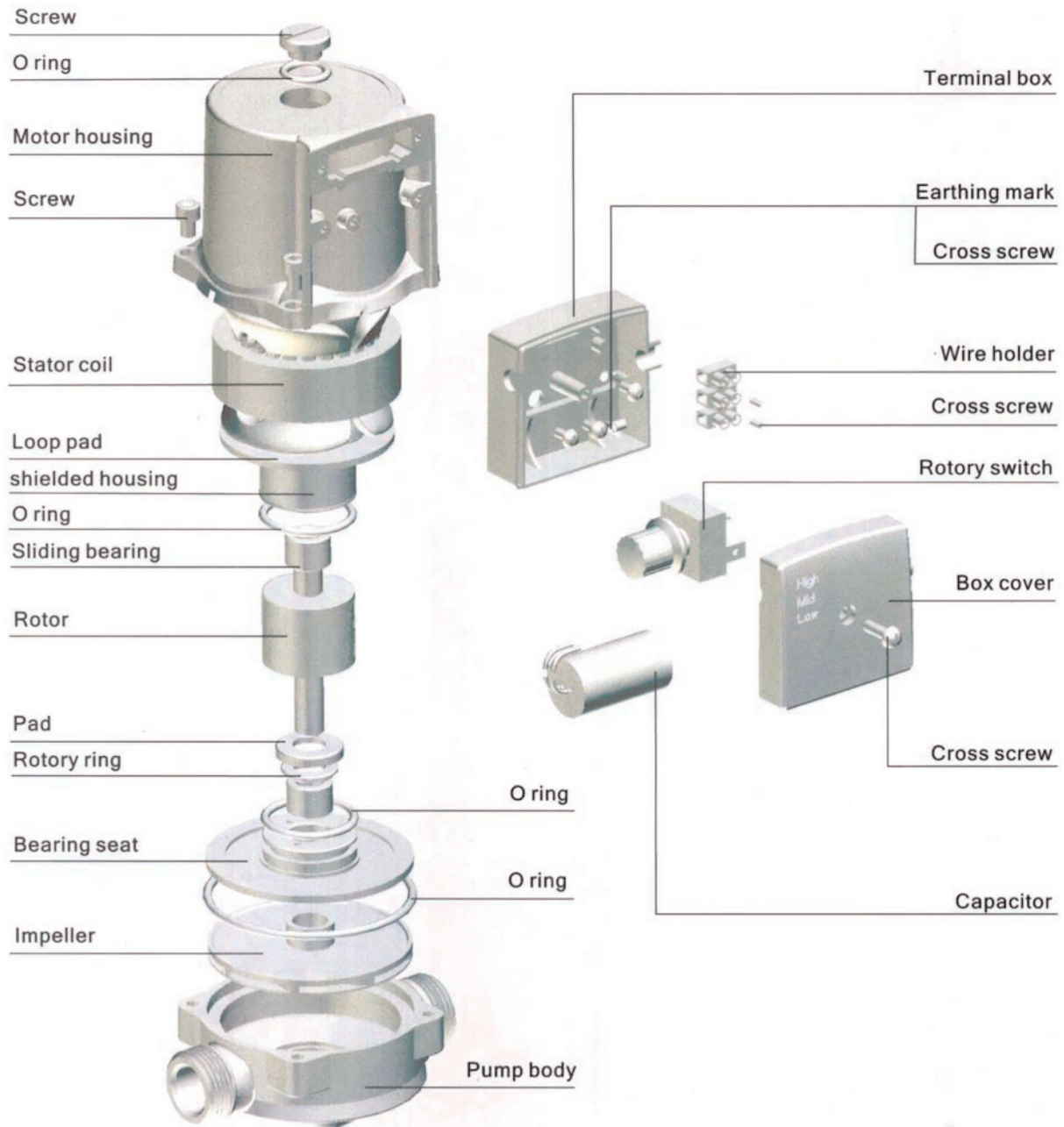
Construction of Series 500 ----- 2
Features ----- 3

Technical Data

Pump data sheet ----- 4
Curve ----- 5

General Data

● Construction of Series 500



● Features



- Control mode for optimum load adjustment
- Automatic delay operation for additional savings potential, for example overnight
- Button for maximum ease of operation
- Motor resistant to blocking current, no other motor protection required
- Cable entry points on both sides for easy installation
- Quick connection with snack-on clips for easy electrical connection

Approved Fluids: Heating water in accordance with VDI 2035
Water/Glycol mixtures (no more than 50% glycol)
Mixture with more than 20% glycol content requires rechecking of the pumping data.

- **Maximum Head:** 49ft (14m)
- **Maximum Flow:** 42 USGPM (1581/min)
- **Maximum Working Pressure:** 145 PSI (999.95 kPa)
- **Maximum Working Temperature:** From 68aF to 220aF (20°C to 104°C)

Technical Data

● Pump data Sheet

| Model | Type | USGPM | Head | Imp. Diameter | BHP | NOL |
|-----------------|------------------|-------|------|---------------|--------|--------|
| 500-GPD25-10SFC | Vertical In-line | | | | 0.20hp | 0.20hp |

Pump

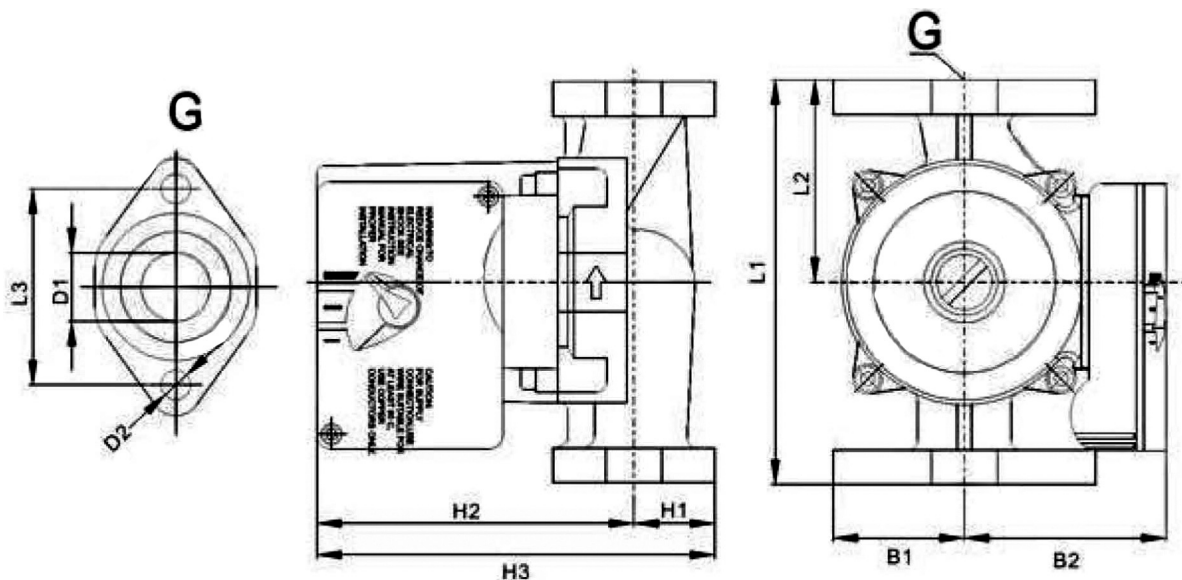
| Weight | Size | Suct. | Disc | H1 | H2 | H3 | L1 | L2 | L3 | B1 | B2 | D1 | D2 |
|----------|--------|-------|------|-------|-------|--------|--------|-------|-------|-------|-------|-------|-------|
| 12.8 lbs | inches | 1.50 | 1.50 | 1.3 | 4.5 | 5.9 | 6.4 | 3.6 | 3.1 | 1.8 | 3.2 | 1.2 | 0.4 |
| 5.81 kgs | mm | 38.1 | 38.1 | 33.02 | 114.3 | 149.86 | 162.56 | 91.44 | 78.74 | 45.72 | 81.28 | 30.48 | 10.16 |

Total Weight: 12 lbs.

High Efficiency motor: (Volt/PH/Hz) 110/1/60 NOL -

| hp | rpm |
|------|------|
| 0.25 | 3450 |

| | |
|-----------------|---------------------|
| Flange type | 150 lbs. |
| Construction | 3450 |
| Max. casing PSI | 175 PSIG / 1206 KPa |



Technical Data



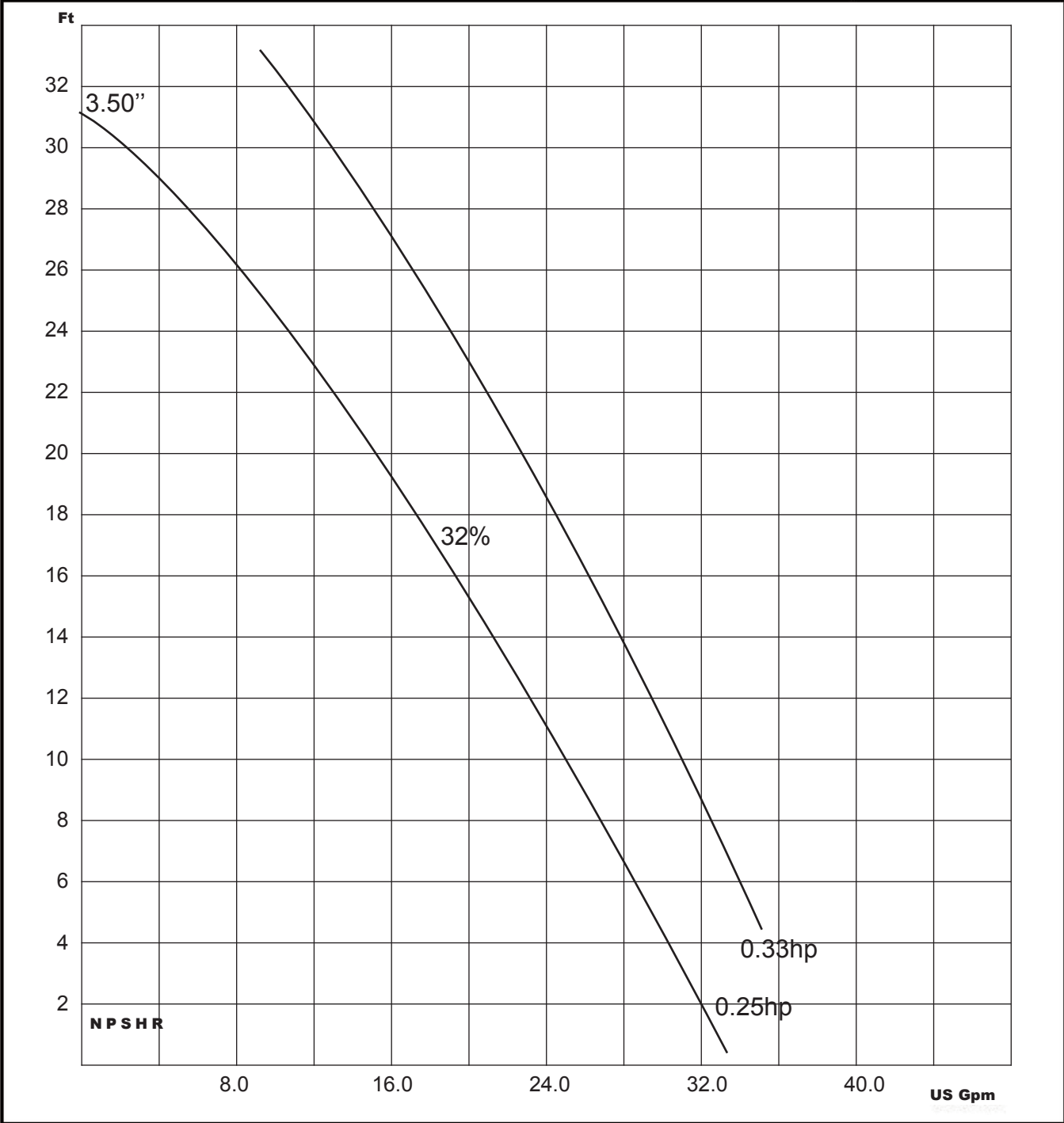
FLO FAB Model: 500-GPD25-10SFC

Certified by: *[Signature]*

Date: november 17, 2009

3500 RPM - 0% glycol

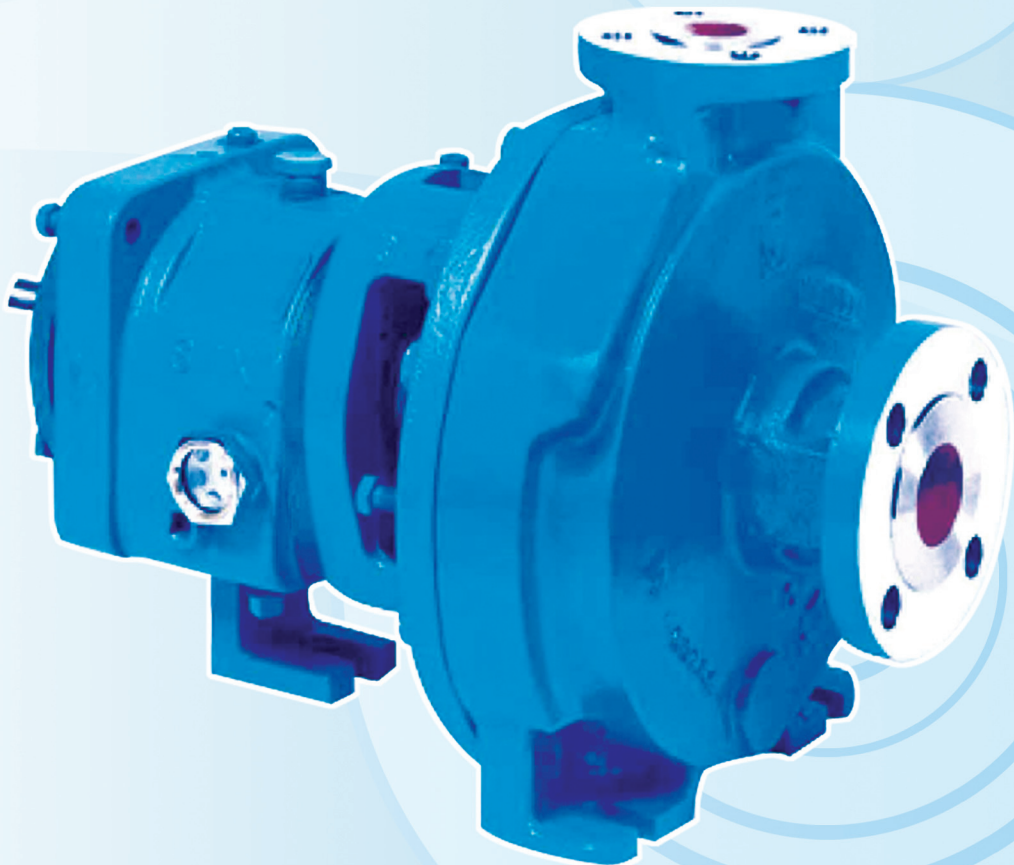
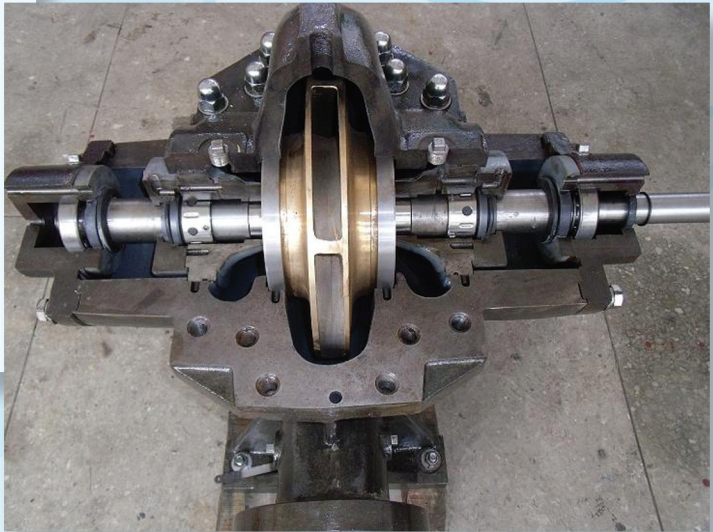
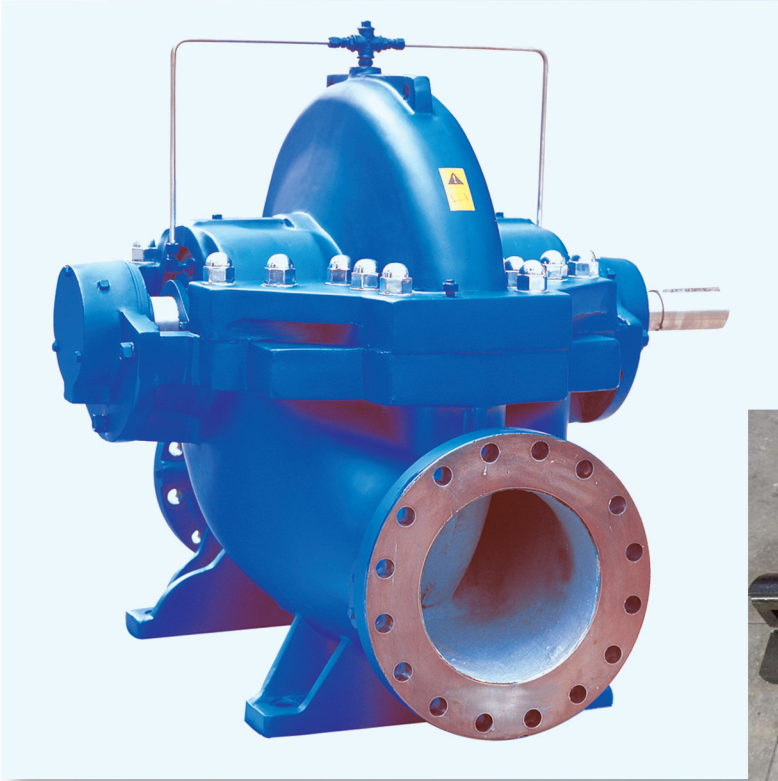
Curve #2519-3500



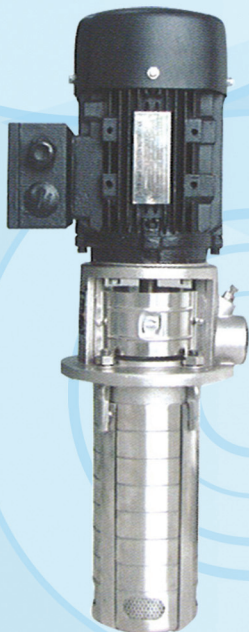
Curves based on shop test using clear cold water on a closed loop system at a temperature of not over 85°F at specific gravity 1.0

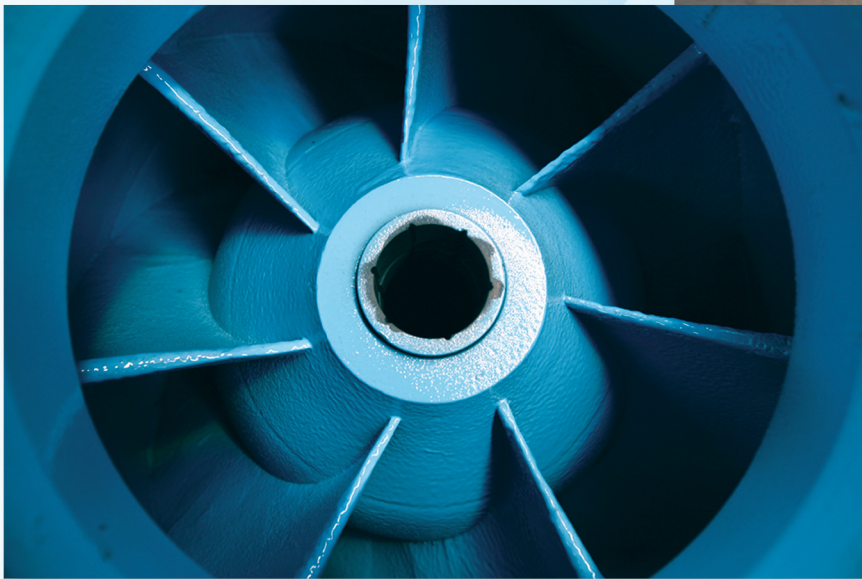
Our company's other products





Our company's other products







Proud pumps supplier for the New World Trade Center towers in New York

We are also a proud pumps supplier for the following completed and ongoing projects:



James Haley VA Hospital

Tampa, Florida
www.tampa.va.gov
 Eng: IC Thomasson Association Incorporated

Morton Plant North Bay Hospital

New Port Richey, Florida
www.mortonplant.com
 Eng: IC Thomasson Association Incorporated



Palm Beach Gardens Medical Center - ER Expansion

Plam Beach Gardens, Florida
www.pbgmc.com
 Eng: IC Thomasson Association Incorporated

Museum of Science and Industry

Tampa, Florida
www.mosi.org
 Eng: Advanced Systems Engineering



St-Joseph's Women's Hospital

Tampa, Florida
www.sjbhealth.org
 Eng: Smith, Seckman, Reid Engineering

FLO FAB Inc.

USA

Lake Worth
 Florida
 USA
 33467-5749

CANADA

860 Industriel Blvd
 Bois-des-Filion, Quebec
 J6Z 4V7
 Canada
 Tel.: (450) 621-2995
 Fax: (450) 621-4995