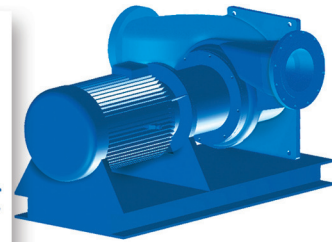
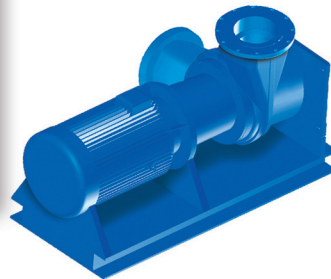
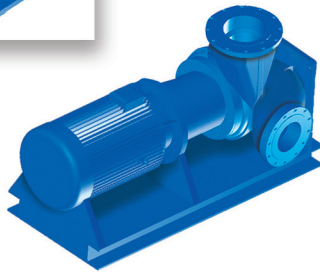
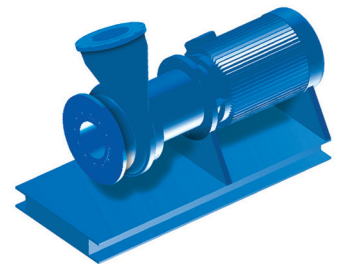
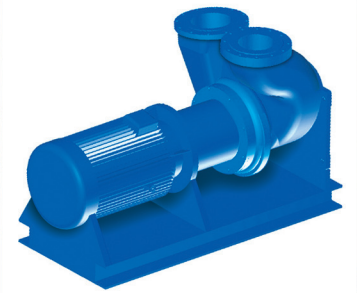
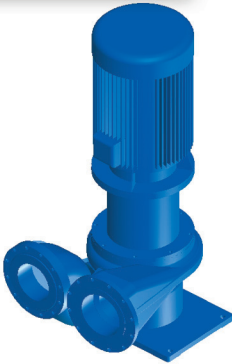


Series XRI Universal

Single
Suction
Pumps



FLO FAB

www.flofab.com

Company profile

Flo Fab is a company which specialized in manufacturing and selling various pumps, tanks, and heat exchangers and its accessories. Our Factory occupies 30 thousand square feet, on 130 thousand square feet of land which is located in Bois-des-Filion

Quebec Canada. It

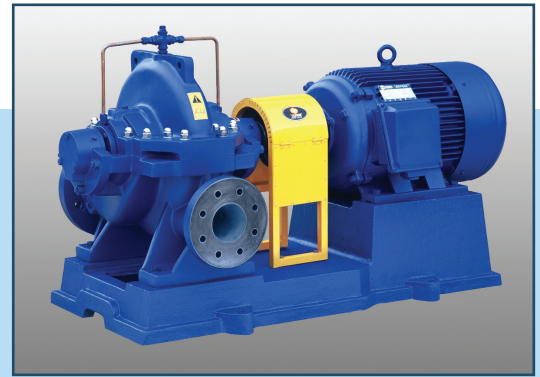
has a convenient transportation on major highways and is approximately 20 kilometers north of the city of Montreal. Our company pays great attention to product quality and the construction of quality management system. Our factory has been in business for more than 40 years.

Our company has over 50 employees including, engineering, designers, R & D and quality control department. The products manufactured are strictly in accordance to standard and every pump is guaranteed to be tested and qualified before being shipped. All tanks and heat exchangers are ASME certified and also tested before being release for shipment.

Our product range covers more than one thousand types over 15 series such as clear water supply, air conditioning, chemical, drainage, sewage handling, boiler feed, condensing, chilled water, heating pumps for municipal, power stations, chemical industry and new or existing buildings.

Our company is not only on track but finds out and designs with the new technology and new products, we devote ourselves in developing new pumping products especially in vertical inline pumps. In recent years we are the first to launch the ZDRI and XRI horizontal, vertical pumps to easy-disassemble these pumps while not removing the pump from the pipeline and also not removing the electric motor.

We will respond to our customers with new and excellent products.



Content

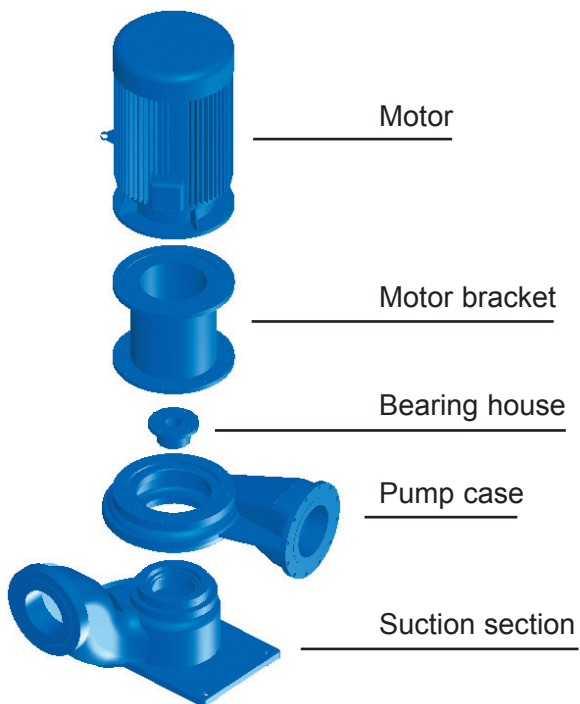
General Data

Disassembly Diagram -----	2
Product Introduction -----	3
Main purpose -----	4
Working conditions -----	4
Structure specifications -----	4
Product characteristics -----	5

Technical Data

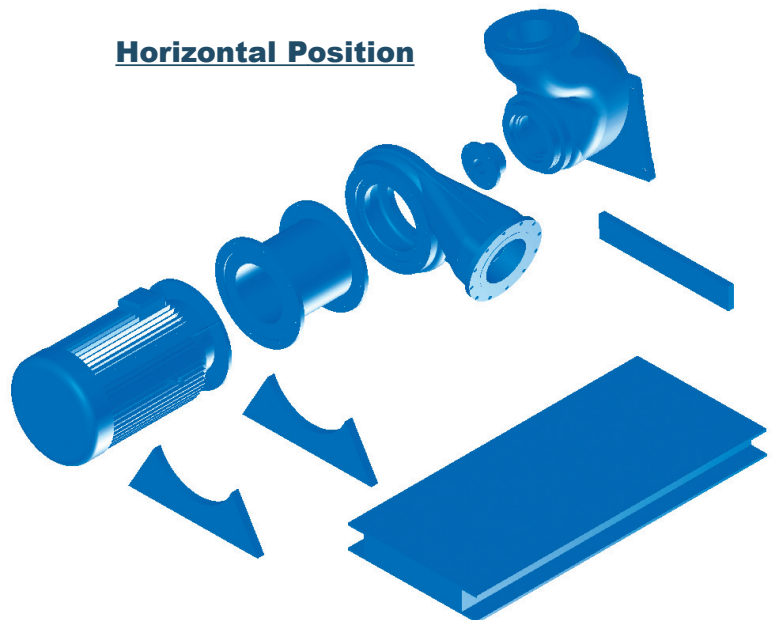
Series XRI Various Configurations -----	6
Technical Characteristics for Series XRI -----	8
Hydraulic Coverage for Series XRI -----	9

Vertical Position



Construction of Series XRI

Horizontal Position



General Data

● Disassembly Diagram



When assembled



Take off the intermediate coupling



Take out the rotor components

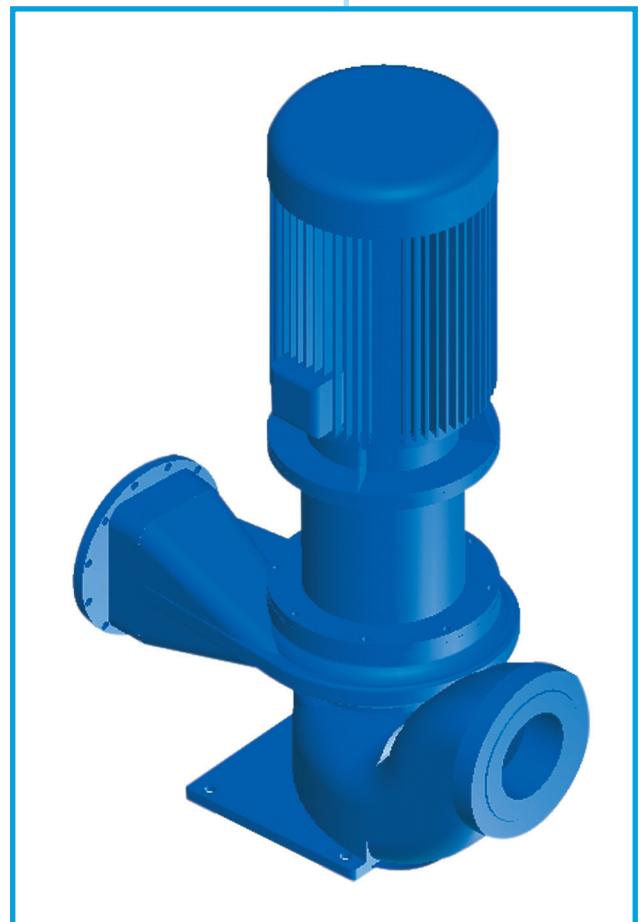


Repair the wearing parts when pump is disassembled, ready to be repaired or serviced

● Product Introduction

Flo Fab introduces a Universal Single-Stage Single-Suction pump and is the latest generation with an original structure and more advanced technologies than any other pump manufacturer. This series of pumps were developed on the basis of efficient energy-saving. These pumps have a Single-Suction impeller for lower flow requirement. These have passed the National Pump Product inspection Center. These pumps comprehensive performance meets the advance level of international requirements.

This pump has the best efficiency and stable performance with balance axial and radial forces. Compared with other types of pumps, it has noticeable higher cavitation performance and its efficiency is 2-5% higher. The great feature of these pumps is being able to service the pump parts without removing the pump casing and the electric motor from the system. This will save time and money to the owner.



General Data

● Product Introduction

◆ MAIN PURPOSE

Application is for cold and cooling water circulation in refrigeration systems, hot water circulation in heating, high-rise refrigeration, air-conditioning water circulation, industrial and city water supply.

◆ WORKING CONDITIONS

Parameters range Pump Series XRI : flow Q=4 to 3,600 m³h (18 usgpm to 15,850 usgpm)

Pump XRI Head: H=6 to 255 meters (20 to 836 feet)

Working voltage and speeds: 230/460/480/575 volts 60 HZ 3 phase 1150/1750/3500 rpm

Other voltage and speeds : 200/380/400 volts 50 HZ 3 phase 980/1450/2900 rpm

Temperature: 120 deg C (250 deg F)

Pump size series XRI: 40 mm to 600 mm (1.5 x 1.5 to 24 x 24)

◆ STRUCTURE SPECIFICATIONS

The XRI pump whose suction and discharge are both on the same horizontal line and also vertical to the axial lead. For the structural design, the pump can be serviced without removing the motor and the pump casing from the system. The rotor assembly are combined and can be taken out one by one just by removing the coupling, thus this operation is done very quickly.

The pump shaft adopts an independent bearing support to ensure the pump and motor power.

The pump shaft has roller bearings while the bottom has a sliding bearing lubricated by the medium.

XRI Impeller: it's a single-stage single-suction impeller with balance axial and radial forces and automatically extends the bearings.

Bearings: Sealed type precision bearings

Mechanical seal: Long life is selected for the correct medium.

◆ PRODUCT CHARACTERISTICS

1. This type of pump has noticeable energy savings. The pump hydraulic performance is provided with an optimum design, whose efficiency is 2-4% higher than that of other type of centrifugal pumps.

2. This pump has a bold and break-through product design. It also has a separate bearing support assembly for stable and reliable operation thus solving the shortcomings of the original inline type pumps caused by the shaft extension shaft supported by the motor bearings, such as big vibrations and a high rate failure.

3. The impeller and the pump casing is most advantageous with modern hydraulic model with a unique axial force equilibrator to remove the axial and radial forces of the vertical pump, improve the operation stability and extend the service life of the bearings and the mechanical seal.

4. It is easy and inexpensive to replace the pump shaft: the pump's shaft is separated from the motor. If the pump shaft needs to be replaced for being worn out or corrosive, it's only necessary to replace a small section of it, which means very low cost to the owner.

5. The inline pump and horizontal related motor is standard in the industry and is accessible everywhere.

6. Replacement parts are usually, wearing, impeller, mechanical seal, and bearings in which you will not need to lift heavy pump parts to have these replaced.

7. Compared to a horizontal single stage double-suction split case pump this has two major advantages :

7.a Vertical inline pumps have a vertical structure which is space-effective so the pump room will have more space available, effective saving the fixed investment.

7.b Vertical inline pumps has a structure integrating pump and motor, so it doesn't need working procedures of installation and debugging like centering and alignment like horizontal end suction pumps when it arrives on the jobsite, and the high concentricity precision between the pump and motor contributes to the pump's stable and low-noise operation.

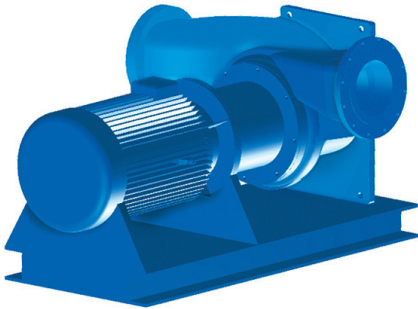
7.c These XRI pumps are available in many different configurations just by rotating the suction casing

1. Vertical Inline (side suction side discharge)
2. Horizontal end suction (end suction top discharge)
3. Horizontal end suction (top suction top discharge)
4. Horizontal end suction (side suction top discharge)

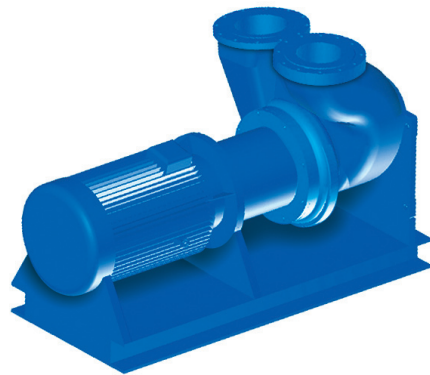
General Data

- **Series XRI Various Configurations**

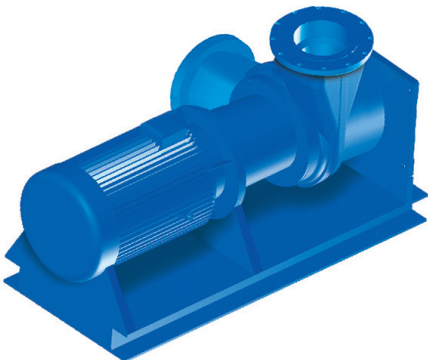
Horizontal



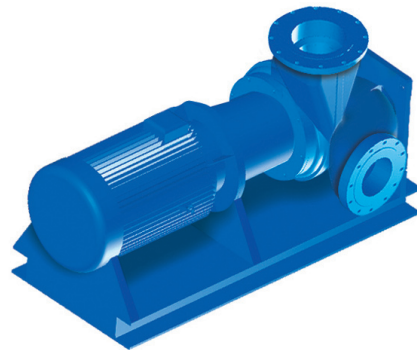
Inline horizontal



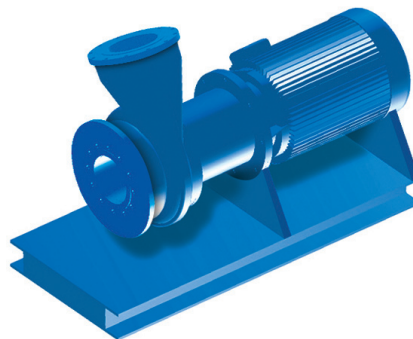
U-shaped horizontal



45 degree horizontal



Crossed horizontal



End suction horizontal

- **Series XRI Various Configurations**

Vertical



Inline vertical



U-shaped vertical



45 degree vertical

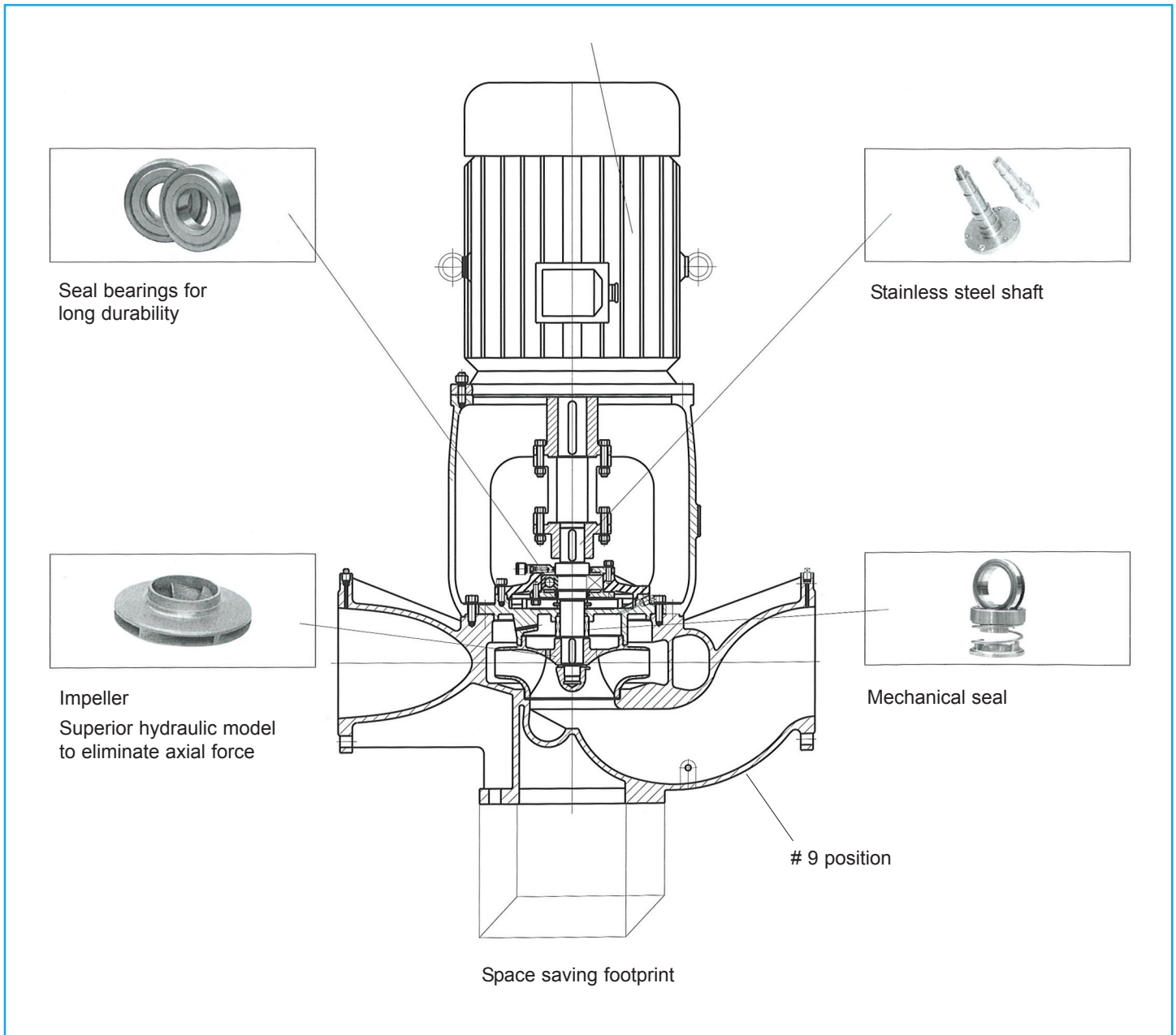


Crossed vertical

Technical Data

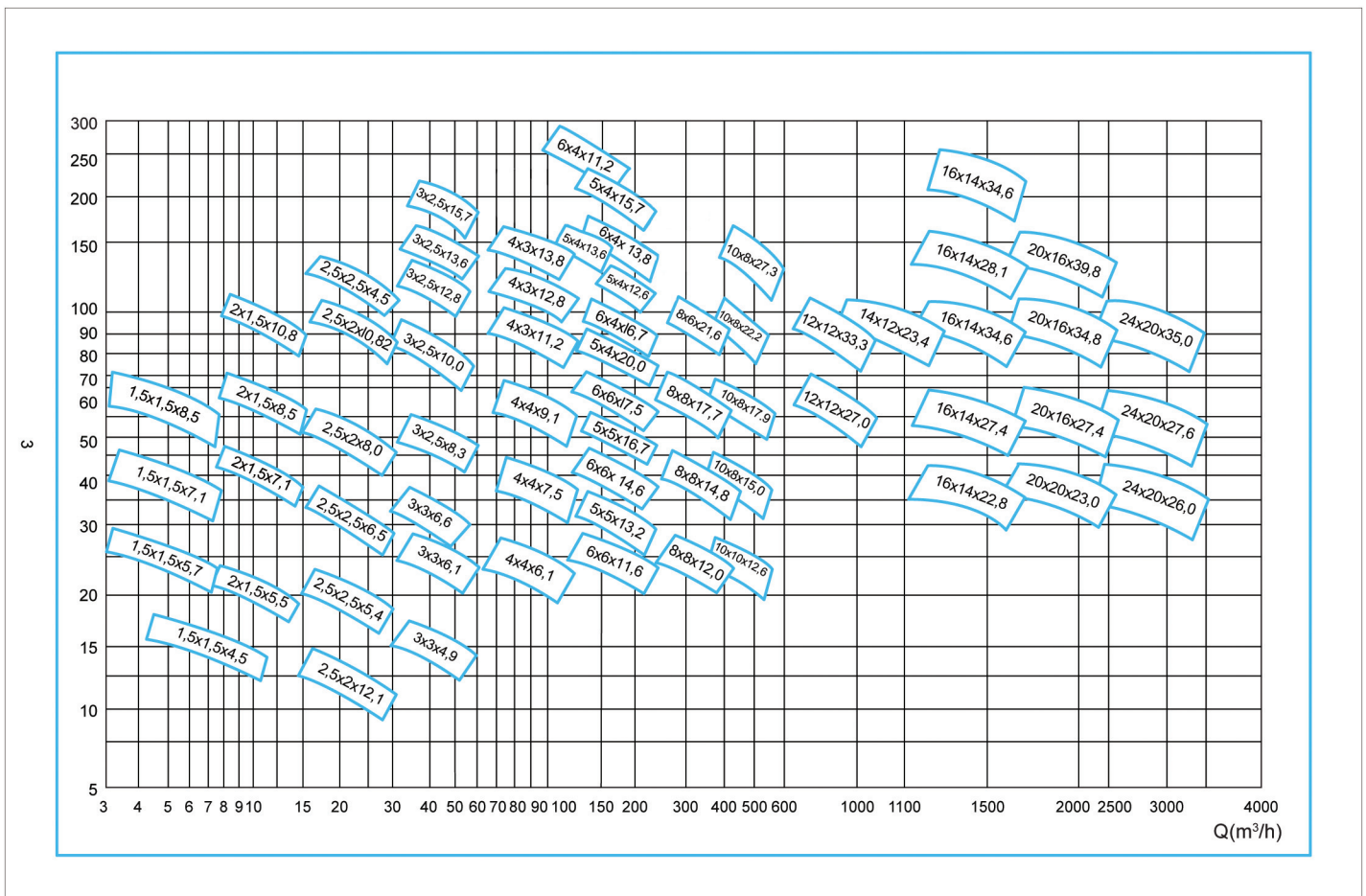
● Technical Characteristics for Series XRI

Single Suction Assembly



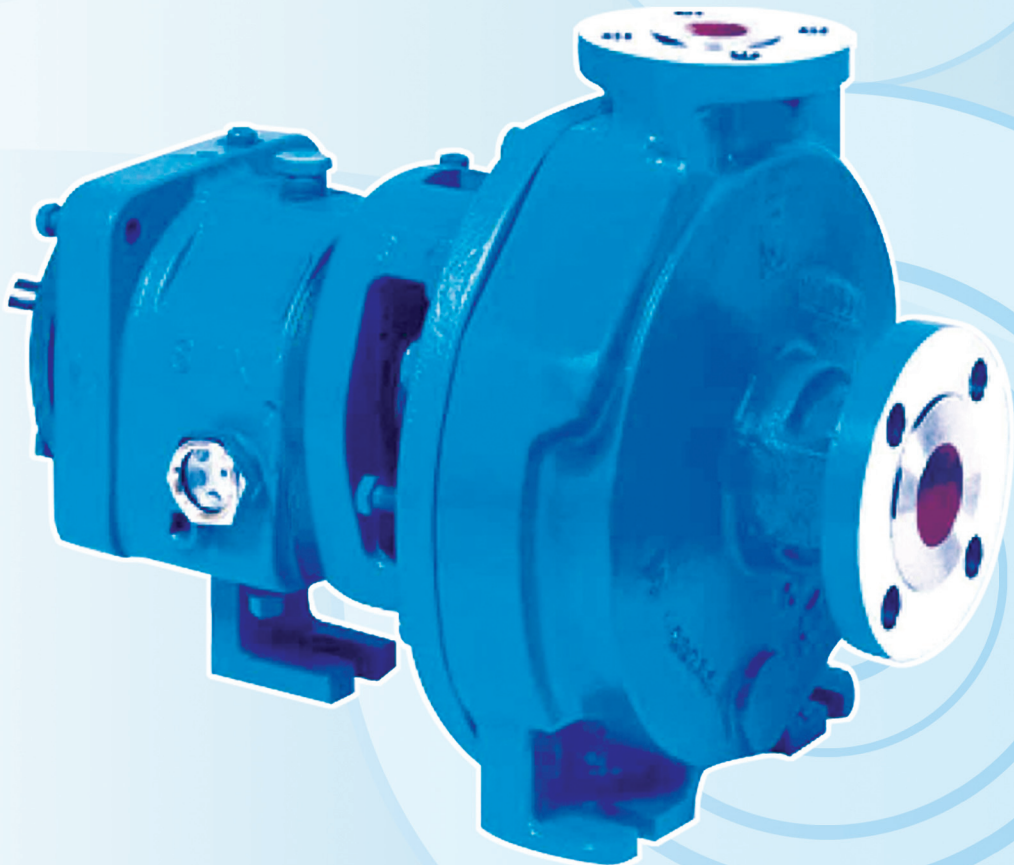
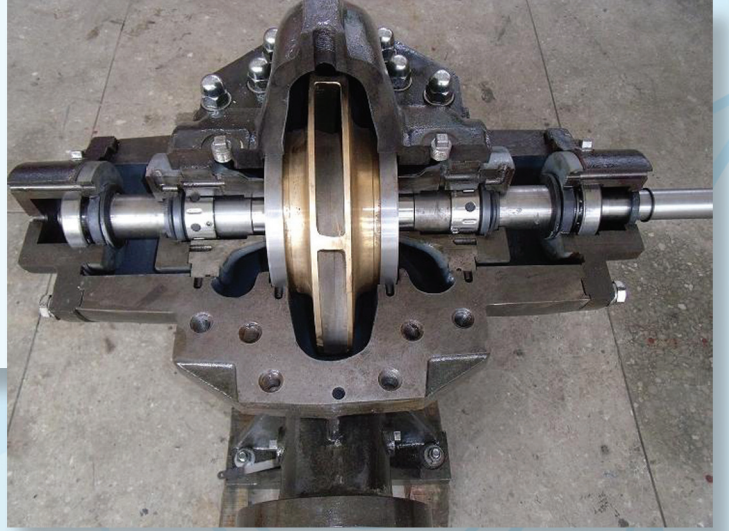
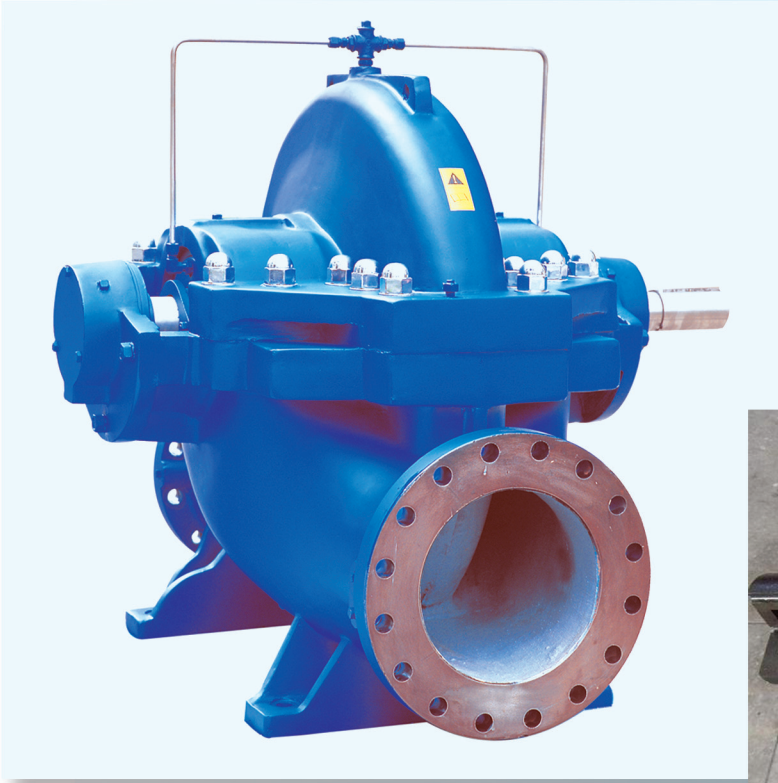
● Hydraulic Coverage for Series XRI

Single Suction Assembly



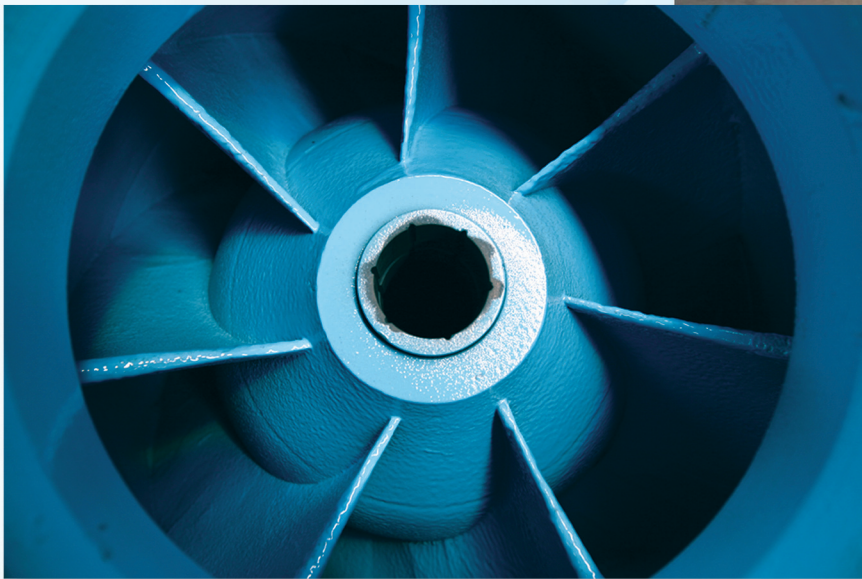
Company's Other Products





Company's Other Products







Proud pumps supplier for the New World Trade Center towers in New York

We are also a proud pumps supplier for the following completed and ongoing projects:



James Haley VA Hospital

Tampa, Florida
www.tampa.va.gov
 Eng: IC Thomasson Association Incorporated

Morton Plant North Bay Hospital

New Port Richey, Florida
www.mortonplant.com
 Eng: IC Thomasson Association Incorporated



Palm Beach Gardens Medical Center - ER Expansion

Plam Beach Gardens, Florida
www.pbgmc.com
 Eng: IC Thomasson Association Incorporated

Museum of Science and Industry

Tampa, Florida
www.mosi.org
 Eng: Advanced Systems Engineering



St-Joseph's Women's Hospital

Tampa, Florida
www.sjbhealth.org
 Eng: Smith, Seckman, Reid Engineering

FLO FAB Inc.

USA

Lake Worth
 Florida
 USA
 33467-5749

CANADA

860 Industriel Blvd
 Bois-des-Filion, Quebec
 J6Z 4V7
 Canada
 Tel.: (450) 621-2995
 Fax: (450) 621-4995