

# BASE MOUNTED PUMPS

Series 2000



FLO FAB

[www.flofab.com](http://www.flofab.com)

# Company profile

**F**lo Fab is a company which specialized in manufacturing and selling various pumps, tanks, and heat exchangers and its accessories. Our Factory occupies 30 thousand square feet, on 130 thousand square feet of land which is located in Bois-des-Filion

Quebec Canada. It

has a convenient transportation on major highways and is approximately 20 kilometers north of the city of Montreal. Our company pays great attention to product quality and the construction of quality management system. Our factory has been in business for more than 40 years.

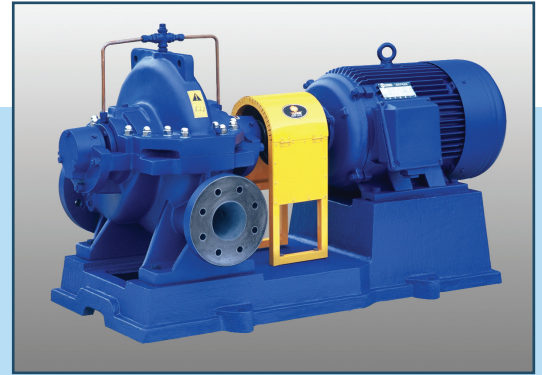
Our company has over 50 employees including, engineering, designers, R & D and quality control department. The products manufactured are strictly in accordance to standard and every pump is guaranteed to be tested and qualified before being shipped. All tanks and heat exchangers are ASME certified and also tested before being release for shipment.

Our product range covers more than one thousand types over 15 series such as clear water supply, air conditioning, chemical, drainage, sewage handling, boiler feed, condensing, chilled water, heating pumps for municipal, power stations, chemical industry and new or existing buildings.

Our company is not only on track but finds out and designs with the new technology and new products, we devote ourselves in

developing new pumping products especially in vertical inline pumps. In recent years we are the first to launch the ZDRI and XRI horizontal, vertical pumps to easy-disassemble these pumps while not removing the pump from the pipeline and also not removing the electric motor.

We will respond to our customers with new and excellent products.



# Content

## **General Data**

Features Series 2000 ----- 2

## **Technical Data**

Performance curves Series 2000 ----- 3

# General Data

## ● Features Series 2000

**Casing:** Impeller/volute matching minimizes volute losses. The advanced impeller has been carefully matched by computerized design and testing to a volute of superior design. The matching of internal pressures and velocities improves hydraulic efficiency, allowing the impeller to produce its certified design flow and head, thus minimizing wasted horsepower. The volute design has four casing positions available. Gauge tapings make measuring pump pressure differential easy.

**Mechanical Seal:** Long-life mechanical seal is supplied with Viton elastomer, 303 stainless steel parts, carbon rotating washer and ceramic stationary seat. Pre-assembled on a bronze shaft sleeve to assure correct mechanical seal positioning and ease of servicing.

**Shaft:** Slip-fitted, pin-locked bronze shaft sleeve extending through seal box prevents shaft wear and corrosion. Elastomer gaskets seal both the shaft sleeve and the impeller cap screw to prevent shaft corrosion and isolate shaft from pumped liquid.

**Impeller:** New, unique 8-bladed impeller with vastly improved flow hydraulics stabilizes flow and reduces turbulence. Manufactured by Vacuum-cast foundry process that provides smooth waterways and dimensional control not found in sand casting.

**Quick disconnect:** Back pull-out design allows maintenance without disturbing the piping.

**Bearing:** Heavy cast iron bearing frame with integral rear foot support features precision bore and register surfaces to assure rigid, accurate centering of shaft and impeller.

**Features:** Single stage end suction pump and double suction with a standard, stainless steel impeller making it a cost-effective solution. Stainless steel impellers have a superior efficiency and increased application coverage with larger pump sizes and the tougher, stainless steel impeller will last longer on the job no matter what liquid is applied.

The variety of liquids handled today has increased along with temperatures and pressures, which can add up to a shorter life span for a pump. This new option can withstand the chemicals commonly added to liquids today and the stainless steel is less likely to interact with those chemicals than similar bronze impellers.

## Series 2000

Grease reservoirs, conveniently located, provide positive flush-through lubrication for standard grease-lubricated frame. When fully lubricated, there is sufficient grease for up to 20 months of service.

Adequate drain tapings to ensure dry conditions when servicing.

### Completely Assembled

**Application:** Heating, Air Conditioning and Industrial applications

**Head:** Up to 280 ft

**Flow:** Up to 1900 USGPM

**Max. Working Pressure:** 175 PSI

**Max. Working Temperature:** 300<sup>o</sup>F

### Construction Features:

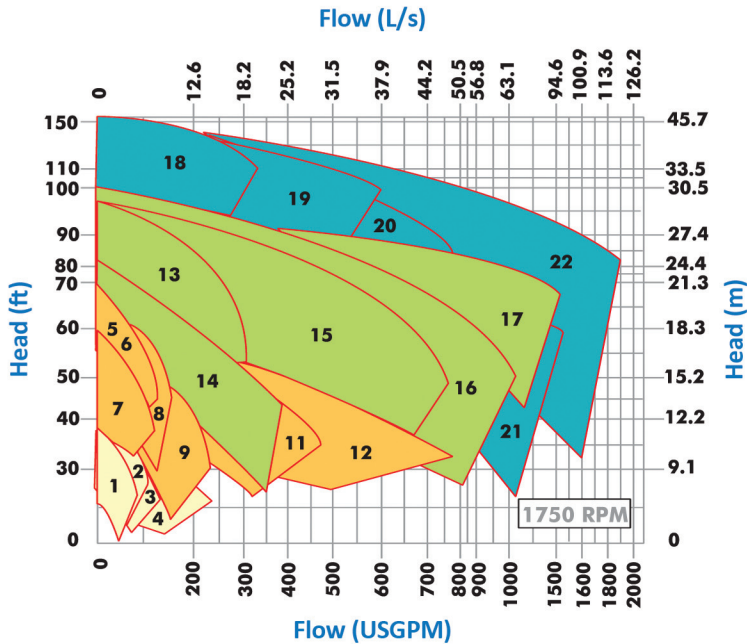
- Standard is Cast Iron body, bronze impeller and wearing with steel shaft all pump sizes.

### Options:

- Cast Iron body with 304 or 316 stainless steel impeller from 2x1x6 to 4x3x8.
- All 304 Stainless steel from 2x1x6 to 4x3x8.
- All Iron construction all sizes.
- Ductile Iron all sizes.

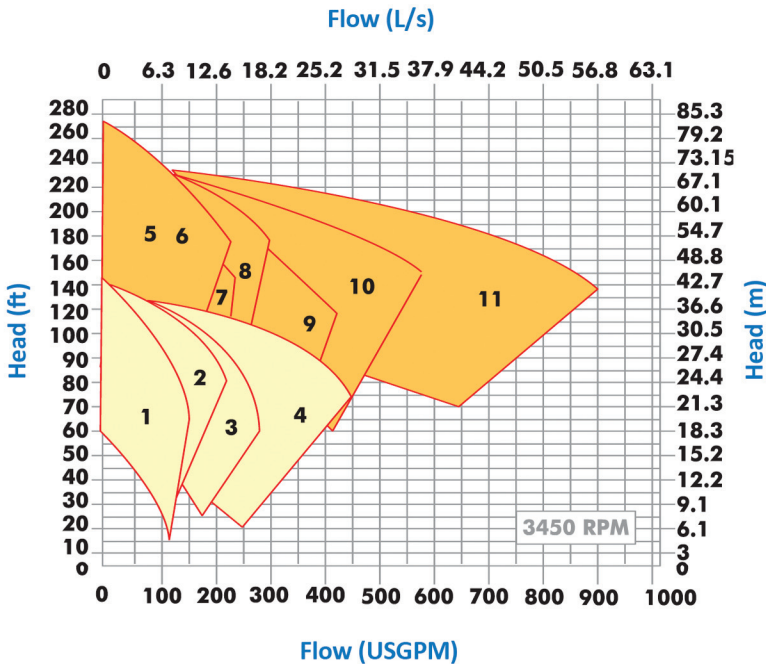
\*\*\*Pumps are hydrostatically tested and data reports are recorded prior to shipping.\*\*\*

● Performance curves Series 2000



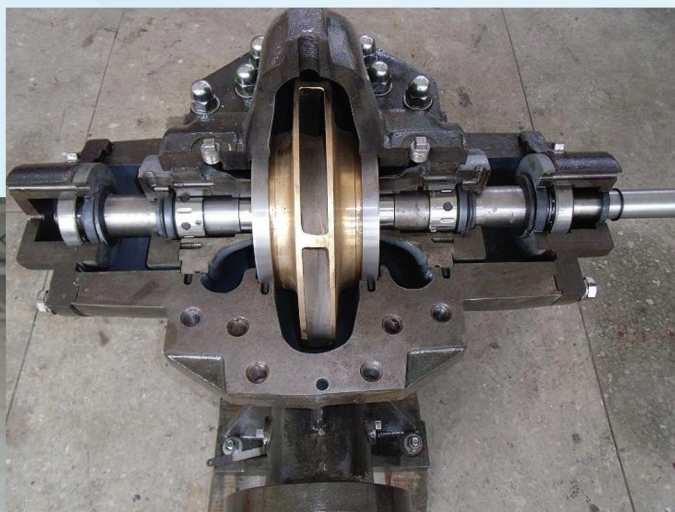
Pump Models and Sizes

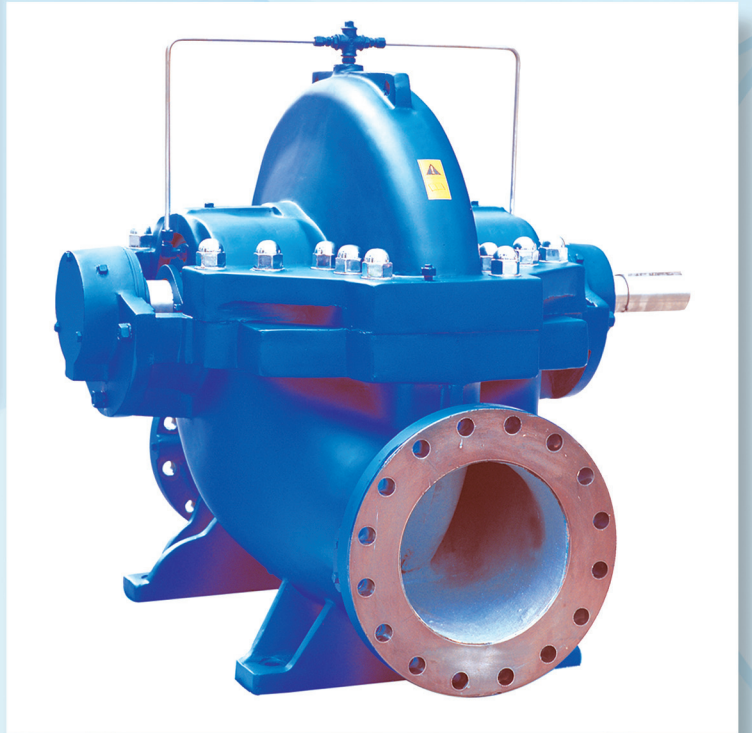
- 1 2 x 1 - 6
- 2 2 x 1.5 - 6
- 3 2 x 1.5 - 6
- 4 2.5 x 2 - 6
- 5 2 x 1 - 8
- 6 2 x 1 - 8
- 7 2 x 1.5 - 8
- 8 2 x 1.5 - 8
- 9 2.5 x 2 - 8
- 10 3 x 2.5 - 8
- 11 4 x 3 - 8
- 12 5 x 4 - 8
- 13 2.5 x 2 - 10
- 14 3 x 2.5 - 10
- 15 4 x 3 - 10
- 16 5 x 4 - 10
- 17 6 x 5 - 10
- 18 2 x 1.5 - 12
- 19 2.5 x 2 - 12
- 20 4 x 3 - 12
- 21 5 x 4 - 12
- 22 6 x 5 - 12



■ = NPT Connection

# Some of our company's products







**Proud pumps supplier for the New World Trade Center towers in New York**

We are also a proud pumps supplier for the following completed and ongoing projects:



**James Haley VA Hospital**

Tampa, Florida  
[www.tampa.va.gov](http://www.tampa.va.gov)  
 Eng: IC Thomasson Association Incorporated

**Morton Plant North Bay Hospital**

New Port Richey, Florida  
[www.mortonplant.com](http://www.mortonplant.com)  
 Eng: IC Thomasson Association Incorporated



**Palm Beach Gardens Medical Center - ER Expansion**

Plam Beach Gardens, Florida  
[www.pbgmc.com](http://www.pbgmc.com)  
 Eng: IC Thomasson Association Incorporated

**Museum of Science and Industry**

Tampa, Florida  
[www.mosi.org](http://www.mosi.org)  
 Eng: Advanced Systems Engineering



**St-Joseph's Women's Hospital**

Tampa, Florida  
[www.sjbhealth.org](http://www.sjbhealth.org)  
 Eng: Smith, Seckman, Reid Engineering

**FLO FAB Inc.**

**USA**

Lake Worth  
 Florida  
 USA  
 33467-5749

**CANADA**

860 Industriel Blvd  
 Bois-des-Filion, Quebec  
 J6Z 4V7  
 Canada  
 Tel.: (450) 621-2995  
 Fax: (450) 621-4995