

CHEMICAL PROCESS PUMP

Series 2196



FLO FAB

www.flofab.com

Company profile

Flo Fab is a company which specialized in manufacturing and selling various pumps, tanks, and heat exchangers and its accessories. Our Factory occupies 30 thousand square feet, on 130 thousand square feet of land which is located in Bois-des-Filion

Quebec Canada. It

has a convenient transportation on major highways and is approximately 20 kilometers north of the city of Montreal. Our company pays great attention to product quality and the construction of quality management system. Our factory has been in business for more than 40 years.



Our company has over 50 employees including, engineering, designers, R & D and quality control department. The products manufactured are strictly in accordance to standard and every pump is guaranteed to be tested and qualified before being shipped. All tanks and heat exchangers are ASME certified and also tested before being release for shipment.



Our product range covers more than one thousand types over 15 series such as clear water supply, air conditioning, chemical, drainage, sewage handling, boiler feed, condensing, chilled water, heating pumps for municipal, power stations, chemical industry and new or existing buildings.

Our company is not only on track but finds out and designs with the new technology and new products, we devote ourselves in

developing new pumping products especially in vertical inline pumps. In recent years we are the first to launch the ZDRI and XRI horizontal, vertical pumps to easy-disassemble these pumps while not removing the pump from the pipeline and also not removing the electric motor.

We will respond to our customers with new and excellent products.



Content

General Data

Disassembly diagram ----- 2

Technical Data

Performance chart ----- 4

Series 2196 Chemical Process Pump Dimensions ----- 5

General Data

● Series 2196 Chemical Process Pump

LABYRINTH SEALS AS STANDARD

Prevents premature bearing failure caused by lubricant contamination or loss of oil. Bearings run cooler and last longer.

RIGID BEARING HOUSING

Designed for reliability, extended pump life.

EXTRA LARGE OIL SUMP CAPACITY

Increased oil capacity provides better heat transfer for reduced oil temperature. Bearings run cooler and last longer.

CONTINUOUS PERFORMANCE

Original flow, pressure and efficiency are maintained by simple external adjustment resulting in long-term energy and repair parts savings.

HEAVY DUTY SHAFT AND BEARINGS

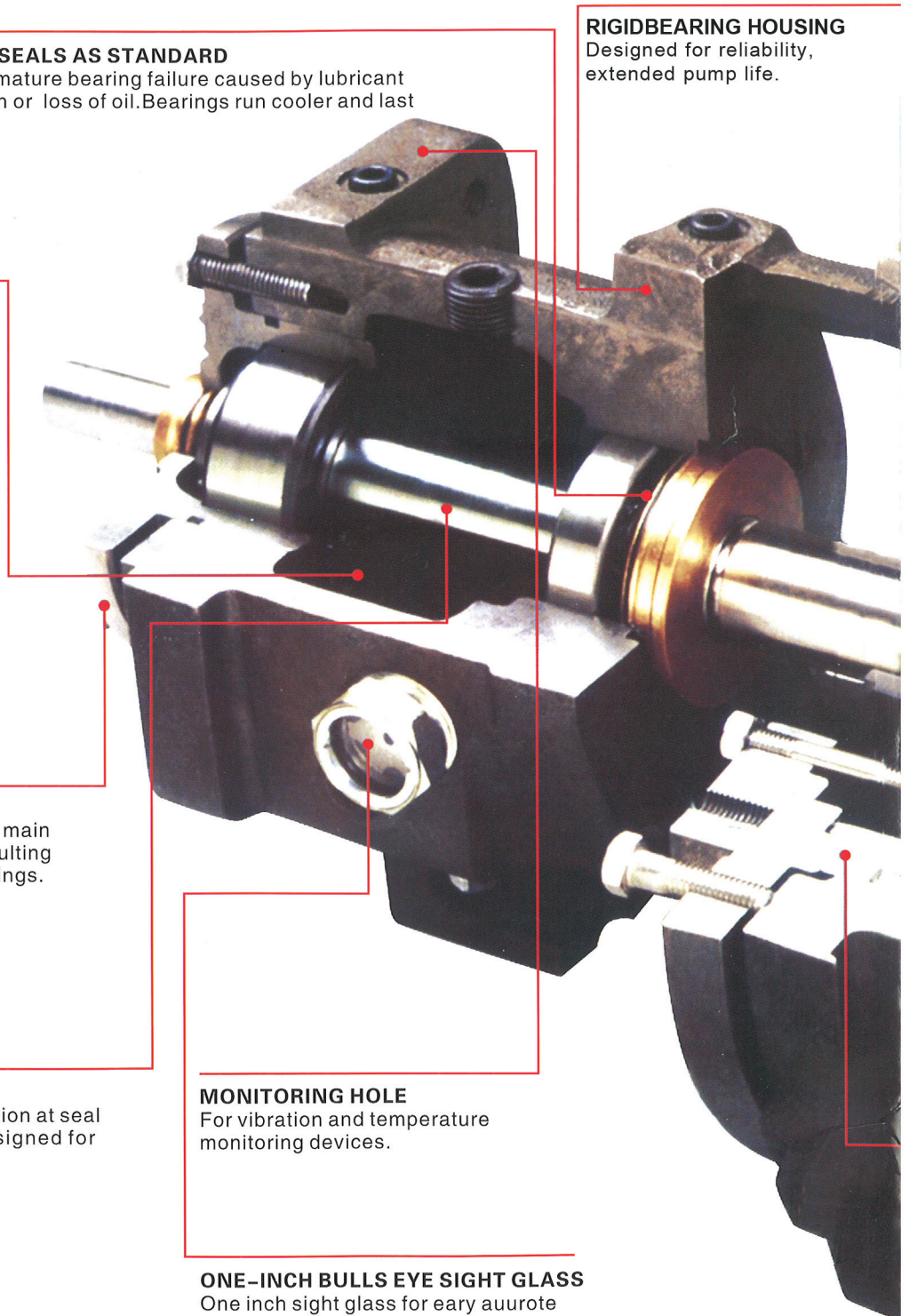
Rigid shaft designed for minimum deflection at seal faces—less than 0.002 in. (0.05 mm). Designed for toughest operating conditions.

MONITORING HOLE

For vibration and temperature monitoring devices.

ONE-INCH BULLS EYE SIGHT GLASS

One inch sight glass for early accurate monitoring of oil level.



CASING

- ★ Extra casing thickness: Class 150 pumps feature Class 300 wall thickness as standard; increased reliability and maximized casing life.
- ★ Top centerline discharge for air handling, self-venting.
- ★ Back pull-out design for ease of maintenance.
- ★ Integral casing feet prevent pipe load misalignment—maximized seal and bearing life.

FULLY OPEN IMPELLER

Acknowledged best design for CPI services—solids handling, stringy material, corrosives, abrasives. Two times the wear area of closed type impellers for longer life. Back pump-out vanes reduce radial thrust loads and seal chamber pressure.



SEALING FLEXIBILITY

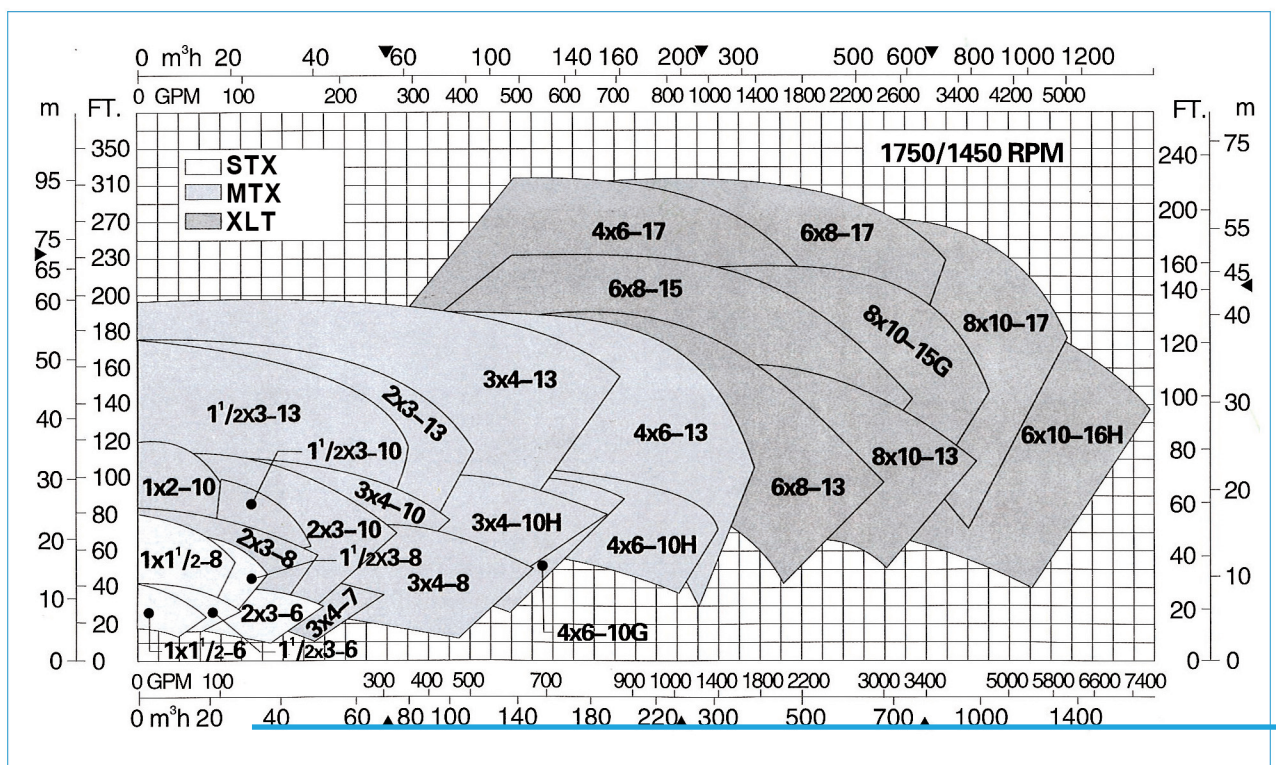
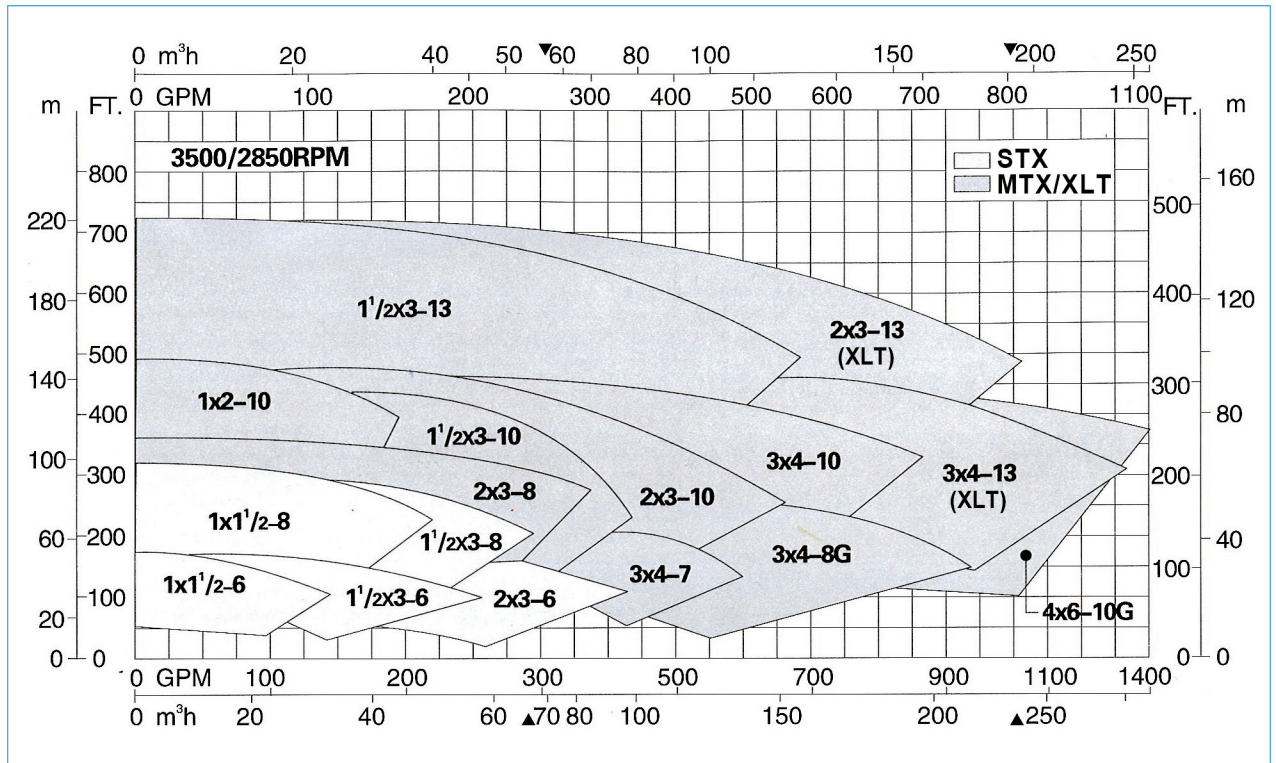
Wide range of sealing arrangements available to meet service conditions.

POSITIVE SEALING

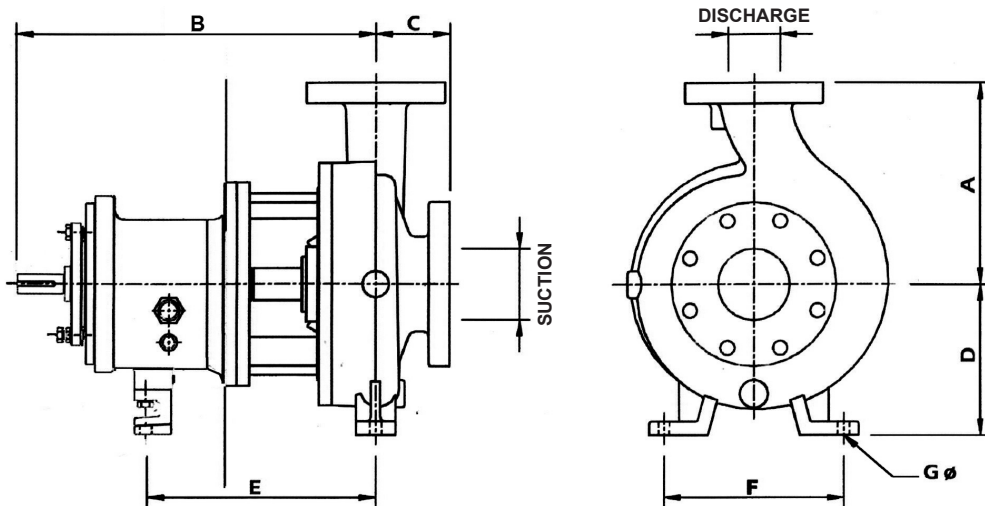
Fully confined gasket at casing joint protects alignment fit from liquid, makes disassembly easier.

Technical Data

● Performance Chart



● Series 2196 Chemical Process Pump Dimensions

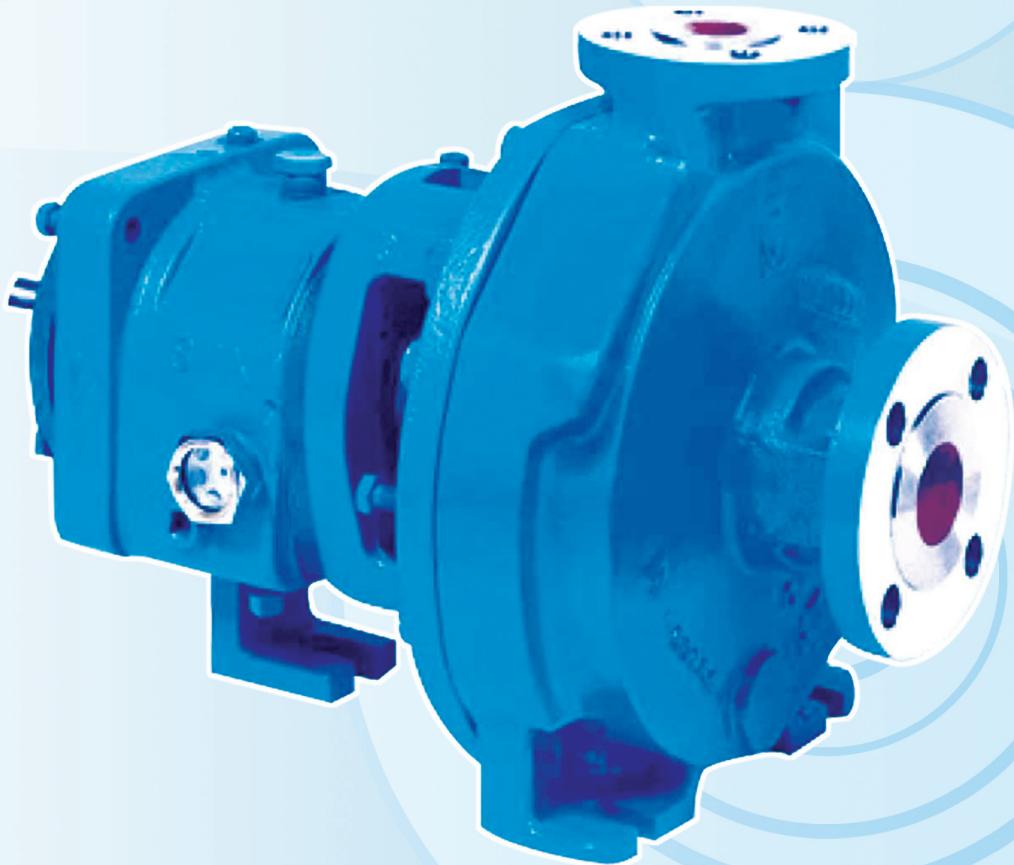
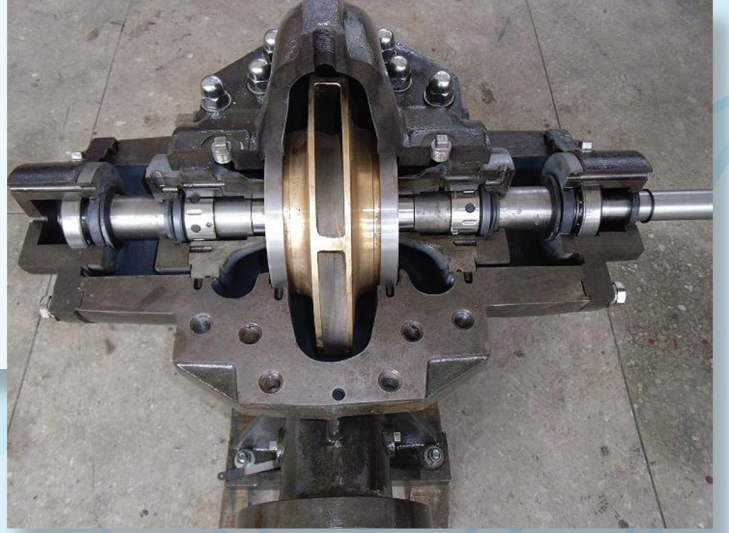
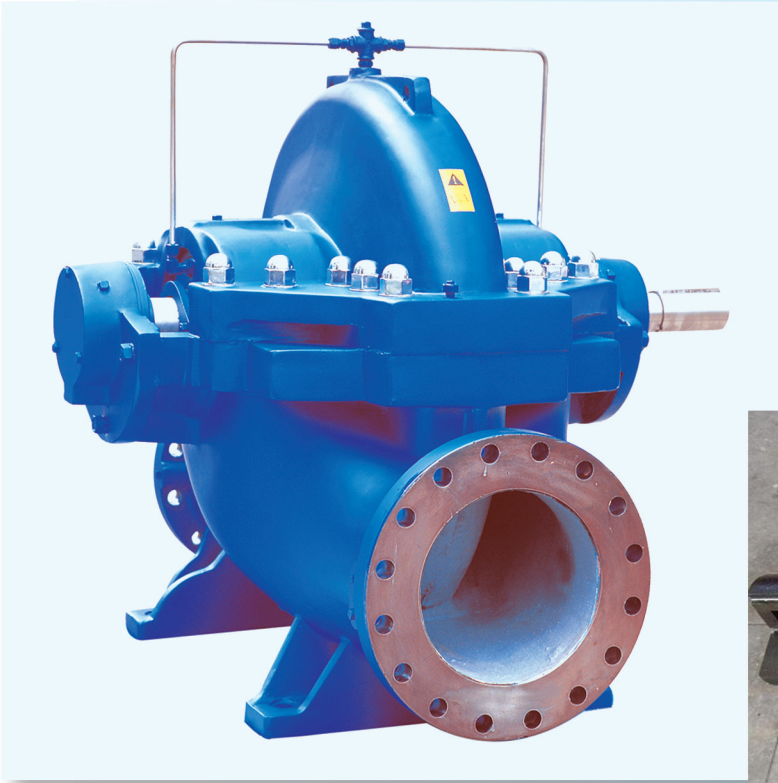


TYPE	MODEL	ANSICODE	SUCTION	DISCHARGE	A		B		C		D		E		F		G φ		weight	
					In.	mm	In.	mm	In.	mm	In.	mm	In.	mm	In.	mm	In.	mm	lbs.	Kg
					In.	In.	In.	mm	In.	mm	In.	mm	In.	mm	In.	mm	In.	mm	In.	mm
STX	1×1.5-6	AA	1	1.5													.625	1.58	38	84
	1.5×3-6	AB	1.5	3													.625	1.58	42	92
	2×3-6	—	2	3	6.5	16.5	13.5	34.3			5.25	13.3	7.28	18.5	6	15.2			43	95
	1×1.5-8	AA	1	1.5													.563	1.43	45	100
	1.5×3-8	AB	1.5	3													.563	1.43	49	105
MTX	3×4-7	A70	3	4	11	28.0													100	220
	2×3-8	A60	2	3	9.5	24.2													91	200
	3×4-8	A70	3	4	11	28.0													100	200
	3×4-8G	A70	3	4							8.25	21.0							91	200
	1×2-10	A05	1	2	8.5	21.6			4	10.2									100	220
	1.5×3-10	A50	1.5	3	9.5	24.2													104	230
	2×3-10	A60	2	3	11	28.0	19.5	49.5											120	265
	3×4-10	A70	3	4	12.5	31.8													138	305
	3×4-40H	A40	3	4	13.5	34.3													138	305
	4×6-10	A80	4	6	10.5	26.7													111	245
	4×6-10H	A80	4	6	11.5	29.2													125	275
	1.5×3-13	A20	1.5	3	12.5	31.8						10	25.4						150	330
	2×3-13	A30	2	3	13.5	34.3													184	405
	3×4-13	A40	3	4													.563	1.43		
4×6-13	A80	4	6																	
XLT	6×8-13	A90	6	8	16	40.6													254	560
	8×10-13	A100	8	10	18	45.7													304	670
	6×8-15	A110	6	8	19	48.3	27.9	70.8	6	15.2	14.5	36.8	18.75	47.6	16	40.6	875	2.22	277	610
	8×10-15	A120	8	10															336	740
	8×10-15G	A120	8	10															710	322

DIMENSIONS IN INCH(mm)

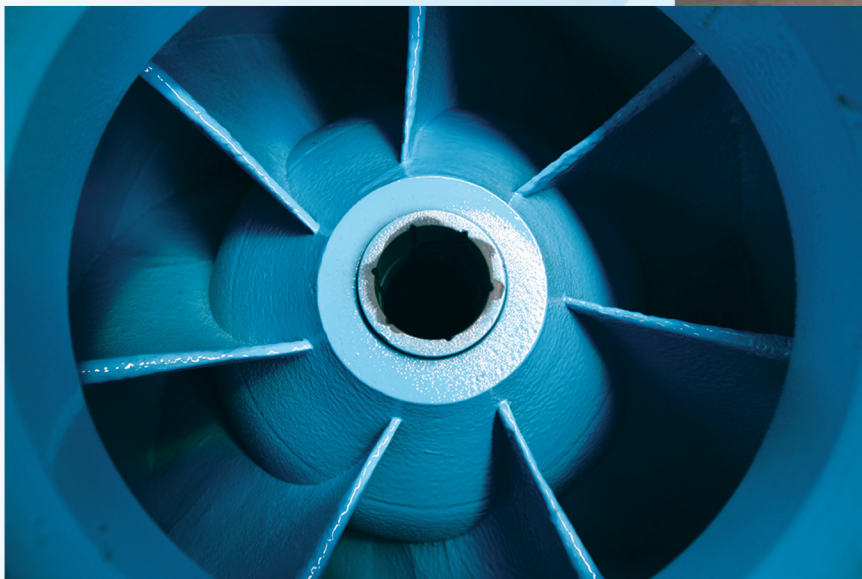
Our company's other products





Our company's other products







Proud pumps supplier for the New World Trade Center towers in New York

We are also a proud pumps supplier for the following completed and ongoing projects:



James Haley VA Hospital

Tampa, Florida
www.tampa.va.gov
 Eng: IC Thomasson Association Incorporated

Morton Plant North Bay Hospital

New Port Richey, Florida
www.mortonplant.com
 Eng: IC Thomasson Association Incorporated



Palm Beach Gardens Medical Center - ER Expansion

Plam Beach Gardens, Florida
www.pbgmc.com
 Eng: IC Thomasson Association Incorporated

Museum of Science and Industry

Tampa, Florida
www.mosi.org
 Eng: Advanced Systems Engineering



St-Joseph's Women's Hospital

Tampa, Florida
www.sjbhealth.org
 Eng: Smith, Seckman, Reid Engineering

FLO FAB Inc.

USA

Lake Worth
 Florida
 USA
 33467-5749

CANADA

860 Industriel Blvd
 Bois-des-Filion, Quebec
 J6Z 4V7
 Canada
 Tel.: (450) 621-2995
 Fax: (450) 621-4995