

Back Pull-out End Suction Centrifugal Pump

Series 2600



FLO FAB

www.flofab.com

Company profile

Flo Fab is a company which specialized in manufacturing and selling various pumps, tanks, and heat exchangers and its accessories. Our Factory occupies 30 thousand square feet, on 130 thousand square feet of land which is located in Bois-des-Filion

Quebec Canada. It

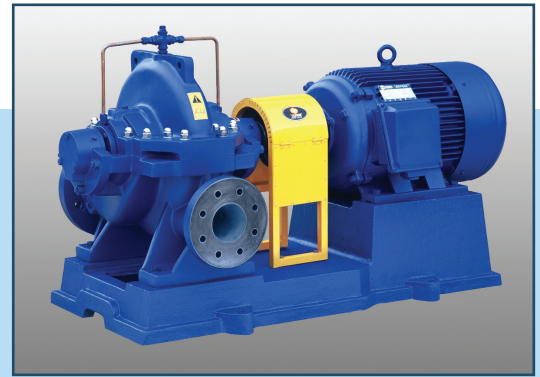
has a convenient transportation on major highways and is approximately 20 kilometers north of the city of Montreal. Our company pays great attention to product quality and the construction of quality management system. Our factory has been in business for more than 40 years.

Our company has over 50 employees including, engineering, designers, R & D and quality control department. The products manufactured are strictly in accordance to standard and every pump is guaranteed to be tested and qualified before being shipped. All tanks and heat exchangers are ASME certified and also tested before being release for shipment.

Our product range covers more than one thousand types over 15 series such as clear water supply, air conditioning, chemical, drainage, sewage handling, boiler feed, condensing, chilled water, heating pumps for municipal, power stations, chemical industry and new or existing buildings.

Our company is not only on track but finds out and designs with the new technology and new products, we devote ourselves in developing new pumping products especially in vertical inline pumps. In recent years we are the first to launch the ZDRI and XRI horizontal, vertical pumps to easy-disassemble these pumps while not removing the pump from the pipeline and also not removing the electric motor.

We will respond to our customers with new and excellent products.



Content

General Data

Range from 1 1/4" to 10" discharge -----	2
Applications -----	3
Easy Flow, Back Pull-out Feature -----	3

Technical Data

Series 2600 Selection Range Chart -----	4
Series 2600 Dimensions -----	6

General Data

● Range from 1 1/4" to 10" discharge

Easyflow range fully complies to both performance and dimensional standards for the International Standard DIN 24255

Stuffing Box

Standard stuffing box includes gland packing with a lantern ring incorporating high pressure internal flushing. External flush can be fitted and pump can be supplied with a mechanical seal. Conversion from packed box to mechanical seal and back to packing is easy. All pumps that can operate at 2 pole speed have a close tolerance stuffing box bush fitted.

Bearing Housing

Rugged cast iron construction with only three bearing housings covering complete range of pumps which gives many common interchangeable parts.

Bearings

Bearings on 33 sizes are grease lubricated-sealed for life. 4 sizes have oil lubricated bearings and for this arrangement the housing includes an oil level sight glass and vent.

Support Foot

Each pump has a removable support foot fitted at drive end for greater rigidity.

Shaft Sleeve

Fully machined hook type shaft sleeve prevents shaft damage under the gland packing which substantially reduces maintenance costs.

Impeller

Double shrouded type is hydraulically balanced and positively driven by shaft key and axially locked between sleeve and impeller nut.

Shaft

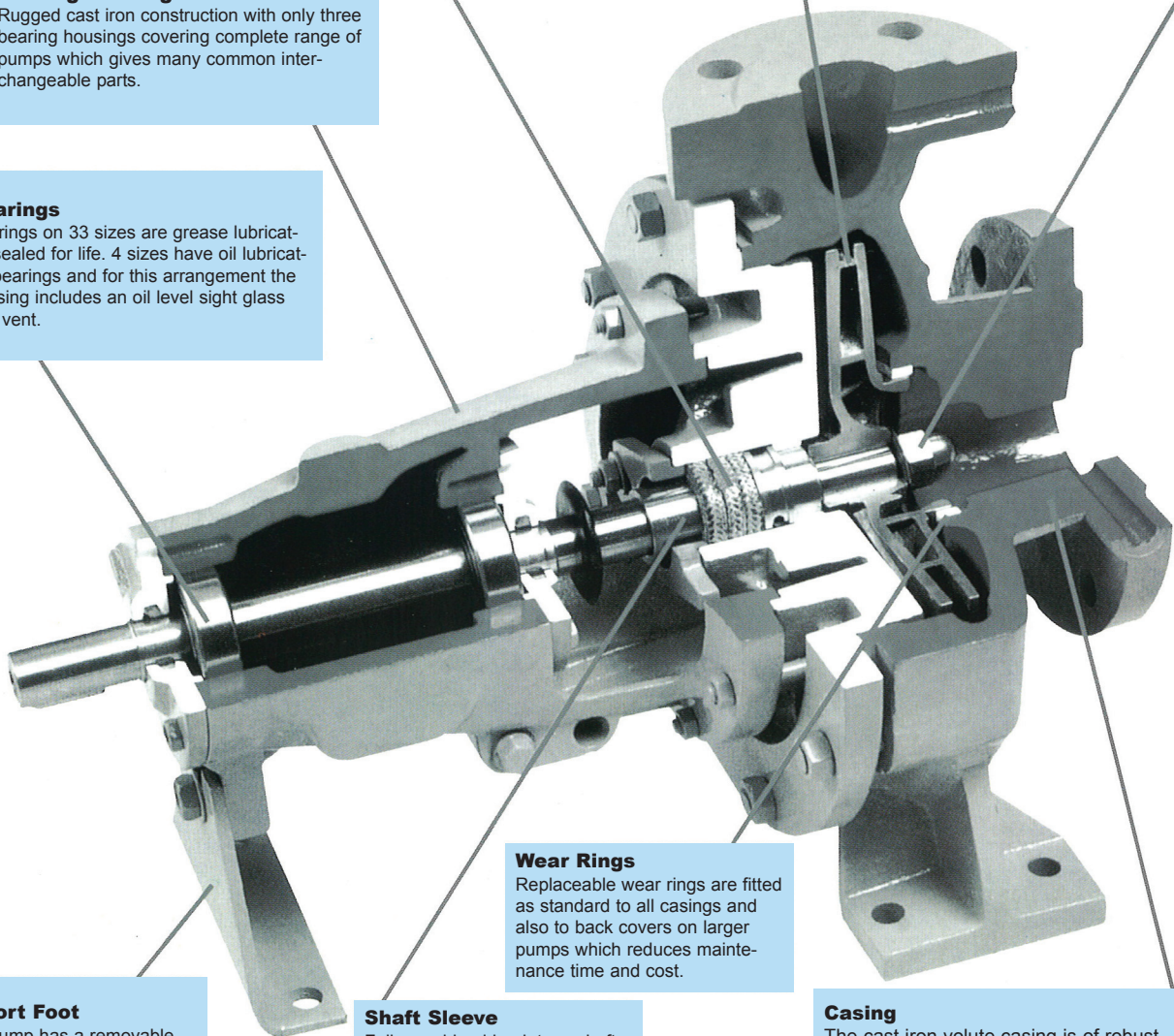
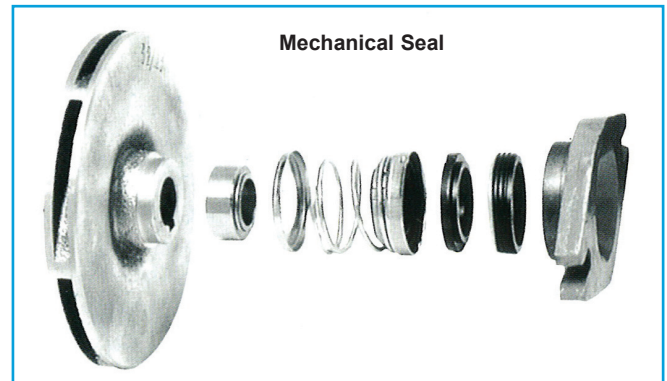
A domed type locking nut seats the stainless steel shaft at the impeller. Only 4 shafts are required to cover whole 37 sizes and reduces inventory to a minimum.

Wear Rings

Replaceable wear rings are fitted as standard to all casings and also to back covers on larger pumps which reduces maintenance time and cost.

Casing

The cast iron volute casing is of robust design with integrally cast feet, vertical top centreline discharge with axial suction incorporating cast inlet vane to give best flow to impeller eye.



General Data



Applications

Air Conditioning
 Heating and Ventilating
 Refrigeration
 Fire Protection
 Plumbing
 Food and Drink Manufacture
 Circulating
 Water Pressure Boosting
 Transfer
 Water Treatment and supply
 Irrigation
 Drainage
 Factory Pumping
 Process Industry
 Petroleum Products
 General Industry



	Bronze Fitted	Cast Iron	All Iron
Casing	Cast Iron	Cast Iron	Cast Iron
Impeller	Bronze	Cast Iron	Cast Iron
Wear ring	Cast Iron	Cast Iron	Cast Iron
Shaft	Stainless steel	Stainless steel	Stainless steel
Shaft nut	Stainless steel	Stainless steel	Cast Iron
Shaft sleeve	Stainless steel	Stainless steel	Stainless steel
Lantern Ring	Cast Iron	Cast Iron	Cast Iron
Gland	Cast Iron	Cast Iron	Cast Iron

Easy Flow Back Pull-out Feature

This design feature allows the complete rotating element to be removed for servicing without disconnecting pipework. If a spacer coupling is fitted then motor does not have to be moved. On re-assembly of pump coupling re-alignment problems are completely eliminated.

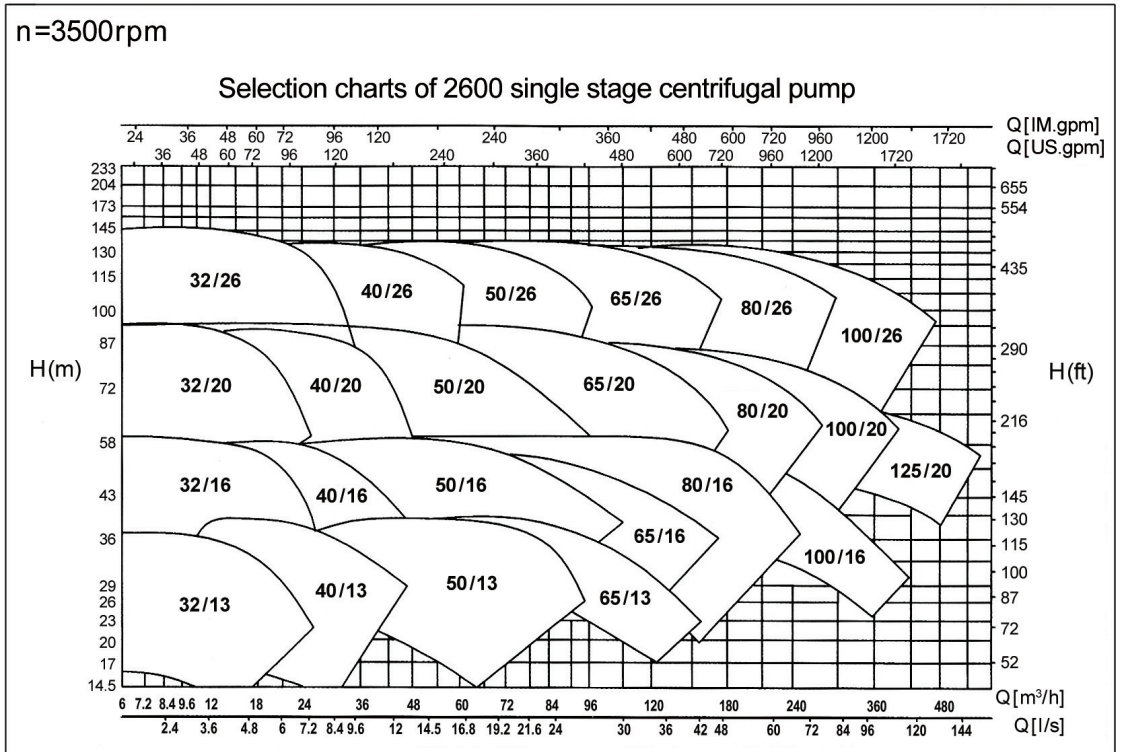
Single stage end suction pump and double suction with a standard stainless steel impeller making it a cost-effective solution. Stainless steel impellers have a superior efficiency and increased application coverage with larger pump sizes and the tougher stainless steel impeller will last longer on the job no matter what liquid is applied.

The variety of liquids handled today has increased along with temperatures and pressures which can add up to a shorter life span for a pump. The above series can withstand the chemicals commonly added to liquids today and the stainless steel is less likely to interact with those chemicals than similar bronze impellers.

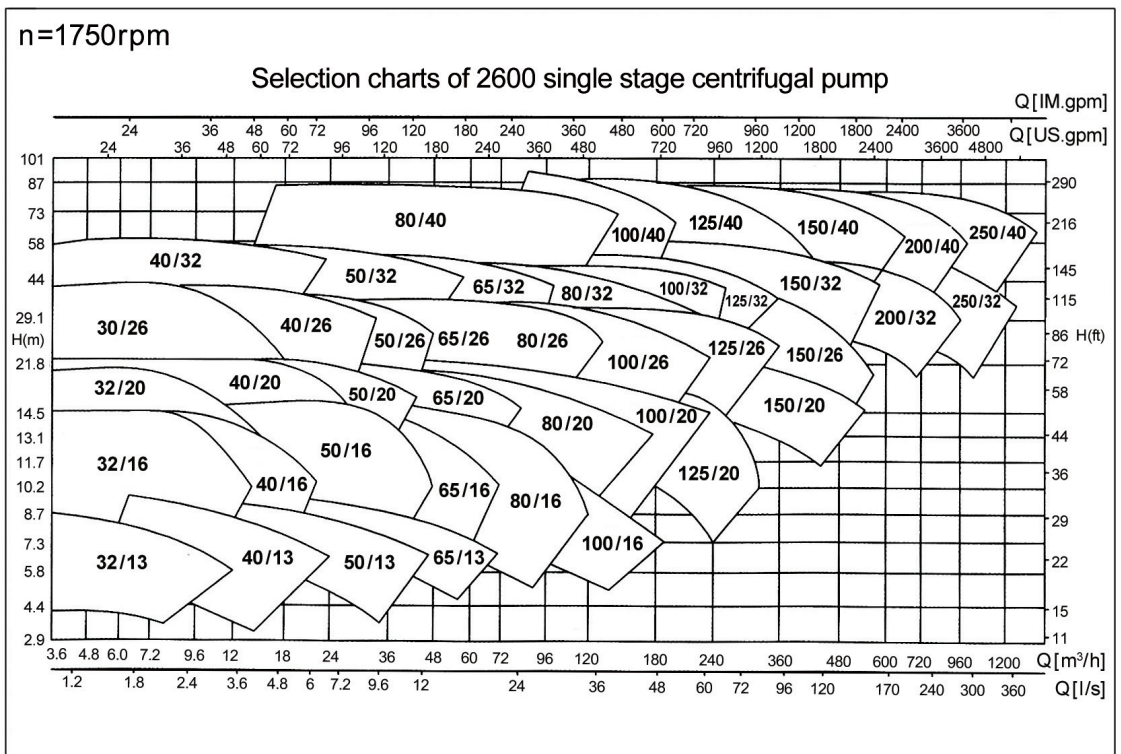
Technical Data

● Series 2600 Selection Range Chart

Selection Chart 3500 RPM

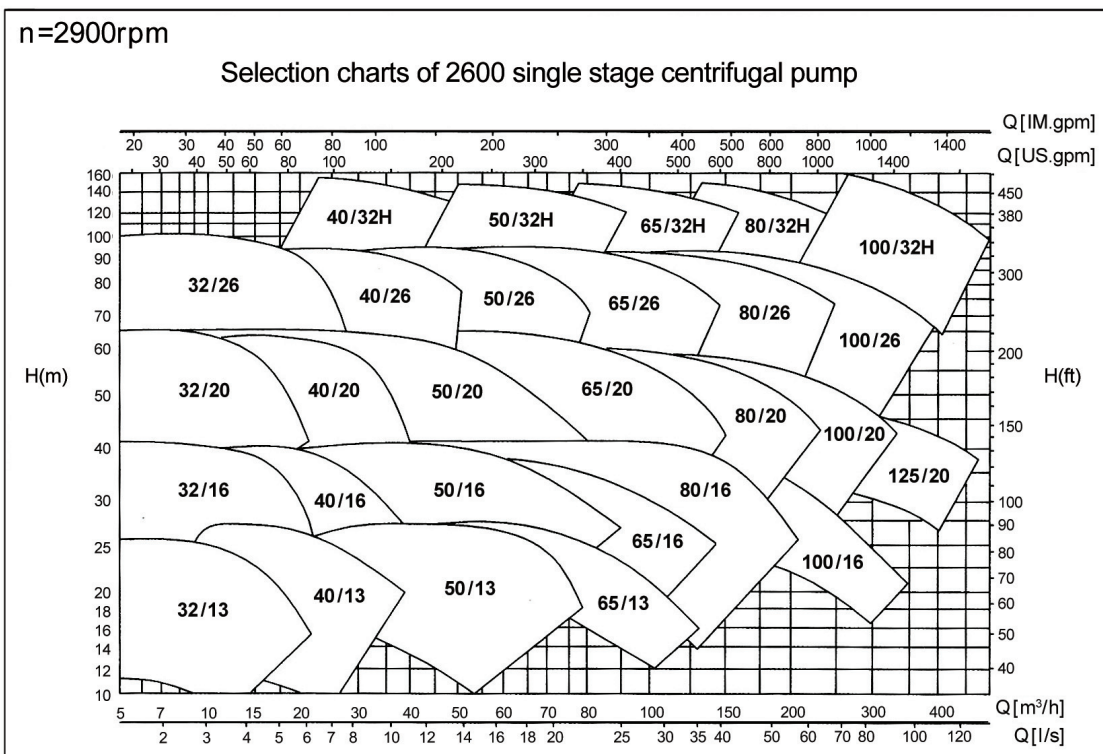


Selection Chart 1750 RPM

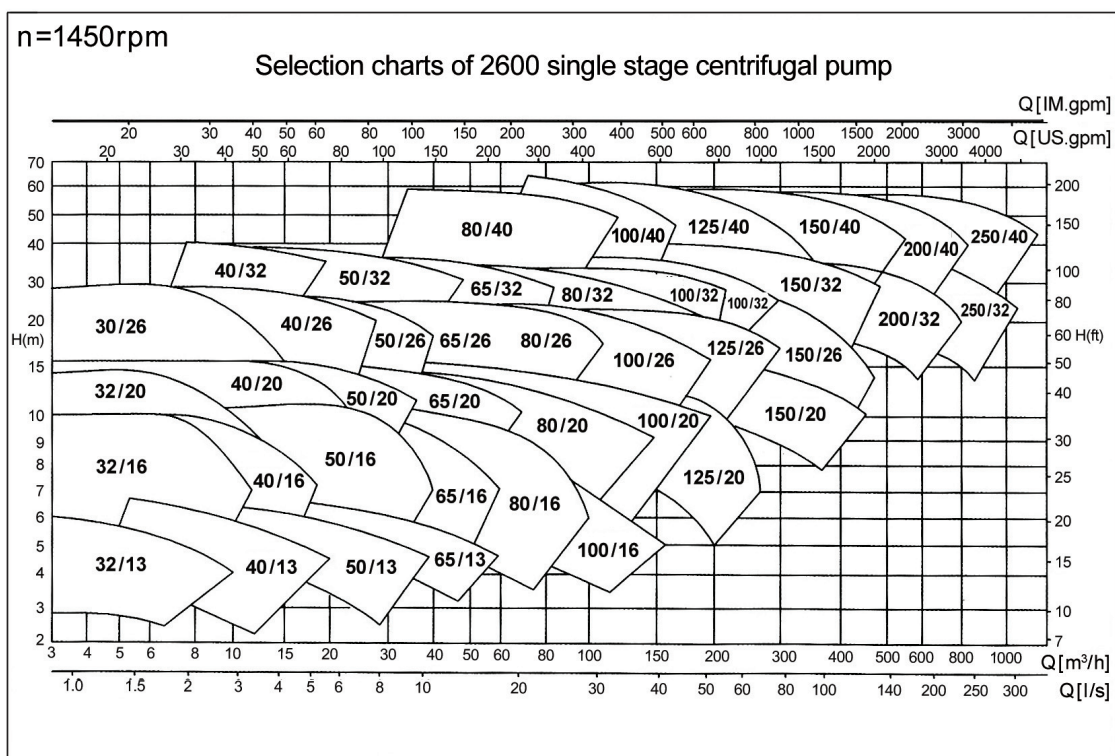


Series 2600 Selection Range Chart

Selection Chart 2900 RPM

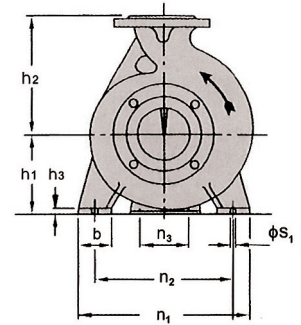


Selection Chart 1450 RPM



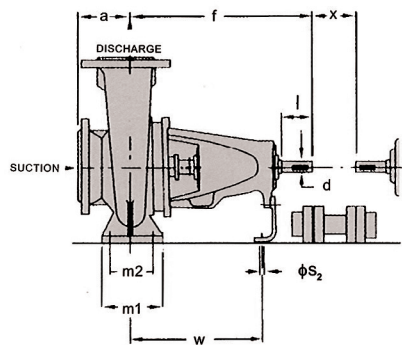
Technical Data

END ELEVATION



Series 2600 Dimensions Chart part 1

Model 2600	Shaft Diameter		Suction		Discharge		Pump Dimensions										Foot Dimensions													
							a		f		h1		h2		b		m1		m2		n1		n1		n3					
							mm	in	mm	in	mm	in	mm	in	mm	in	mm	in	mm	in	mm	in	mm	in	mm	in	mm	in		
2x1 .25-5.5	25	0,98	50	1,97	32	1,26	80	3,15	360	14,17	112	4,41	140	5,51	50	1,97	100	3,94	70	2,76	190	7,48	140	5,51	100	3,94				
2x1 .25-7							80	3,15			132	5,20	160	6,30	50	1,97	100	3,94	70	2,76	240	9,45	190	7,48	100	3,94				
2x1 .25-8.5							80	3,15			160	6,30	180	7,09	50	1,97	100	3,94	70	2,76	240	9,45	190	7,48	110	4,33				
2x1 .25-10.5							100	3,94			180	7,09	225	8,86	65	2,56	125	4,92	95	3,74	320	12,60	250	9,84	110	4,33				
2.5x1 .5-5.5	25	0,98	65	2,56	40	1,57	80	3,15	360	14,17	112	4,41	140	5,51	50	1,97	100	3,94	70	2,76	210	8,27	160	6,30	100	3,94				
2.5x1 .5-7							80	3,15			132	5,20	160	6,30	50	1,97	100	3,94	70	2,76	240	9,45	190	7,48	100	3,94				
2.5x1 .5-8.5							80	3,15			160	6,30	180	7,09	50	1,97	100	3,94	70	2,76	265	10,43	212	8,35	110	4,33				
2.5x1 .5-10.5							100	3,94			180	7,09	225	8,86	65	2,56	125	4,92	95	3,74	320	12,60	250	9,84	110	4,33				
2.5x1 .5-13	45 H	99 H	65	2,56	40	1,57	125	4,92	360	14,17	180	7,09	250	9,84	65	2,56	125	4,92	95	3,74	350	13,78	280	11,02	110	4,33				
2.5x1 .5-13 H							125	4,92			200	7,87	250	9,84	65	2,56	125	4,92	95	3,74	350	13,78	280	11,02	110	4,33				
2.5x2-5.5							100	3,94			180	7,09	225	8,86	65	2,56	125	4,92	95	3,74	320	12,60	250	9,84	110	4,33				
2.5x2-7							100	3,94			180	7,09	225	8,86	65	2,56	125	4,92	95	3,74	320	12,60	250	9,84	110	4,33				
2.5x2-8.5	45 H	99 H	65	2,56	50	1,97	100	3,94	360	14,17	160	6,30	200	7,87	50	1,97	100	3,94	70	2,76	265	10,43	212	8,35	110	4,33				
2.5x2-10.5							100	3,94			160	6,30	180	7,09	50	1,97	100	3,94	70	2,76	265	10,43	212	8,35						
2.5x2-13							125	4,92			180	7,09	225	8,86	280	11,02	65	2,56	125	4,92	95	3,74	350	13,78			280	11,02		
2.5x2-13 H							125	4,92			200	7,87	250	9,84	280	11,02	65	2,56	125	4,92	95	3,74	350	13,78			280	11,02		
3x2.5-5.5	25	0,98	80	3,15	65	2,56	100	3,94	360	14,17	160	6,30	200	7,87	65	2,56	125	4,92	95	3,74	280	11,02	212	8,35	110	4,33				
3x2.5-7							100	3,94			160	6,30	200	7,87	65	2,56	125	4,92	95	3,74	280	11,02	212	8,35						
3x2.5-8.5							100	3,94			180	7,09	225	8,86	65	2,56	125	4,92	95	3,74	320	12,60	250	9,84						
3x2.5-10.5							100	3,94			180	7,09	225	8,86	280	11,02	65	2,56	125	4,92	95	3,74	320	12,60			250	9,84		
3x2.5-13	45 H	99 H	80	3,15	65	2,56	125	4,92	360	14,17	180	7,09	250	9,84	80	3,15	160	6,30	120	4,72	400	15,75	315	12,40	110	4,33				
3x2.5-13 H							125	4,92			200	7,87	250	9,84	80	3,15	160	6,30	120	4,72	400	15,75	315	12,40						
4x3-7							100	3,94			160	6,30	200	7,87	65	2,56	125	4,92	95	3,74	320	12,60	250	9,84						
4x3-8.5							125	4,92			180	7,09	225	8,86	280	11,02	65	2,56	125	4,92	95	3,74	345	13,58			280	11,02		
4x3-10.5	45 H	99 H	100	3,94	80	3,15	125	4,92	360	14,17	180	7,09	250	9,84	80	3,15	160	6,30	120	4,72	400	15,75	315	12,40	110	4,33				
4x3-13											180	7,09	250	9,84	315	12,40	80	3,15	160	6,30	120	4,72	400	15,75			315	12,40		
4x3-13 H											200	7,87	250	9,84	315	12,40	80	3,15	160	6,30	120	4,72	440	17,32			355	13,98		
4x3-16											200	7,87	280	11,02	355	13,98	80	3,15	160	6,30	120	4,72	440	17,32			355	13,98		
5x4-7	45	1,77	125	4,92	100	3,94	125	4,92	360	14,17	180	7,09	250	9,84	80	3,15	160	6,30	120	4,72	400	15,75	315	12,40	110	4,33				
5x4-8.5											125	4,92	200	7,87	280	11,02	80	3,15	160	6,30	120	4,72	360	14,17			280	11,02		
5x4-10.5											140	5,51	180	7,09	225	8,86	280	11,02	80	3,15	160	6,30	120	4,72			400	15,75	315	12,40
5x4-10.5 H											140	5,51	200	7,87	250	9,84	315	12,40	80	3,15	160	6,30	120	4,72			400	15,75	315	12,40
5x4-13	45 H	99 H	125	4,92	100	3,94	140	5,51	360	14,17	140	5,51	200	7,87	250	9,84	315	12,40	80	3,15	160	6,30	120	4,72	400	15,75	315	12,40		
5x4-13 H											140	5,51	200	7,87	250	9,84	315	12,40	80	3,15	160	6,30	120	4,72	400	15,75	315	12,40		
5x4-16											140	5,51	280	11,02	355	13,98	100	3,94	200	7,87	150	5,91	400	15,75	400	15,75				
6x5-8.5											140	5,51	280	11,02	355	13,98	100	3,94	200	7,87	150	5,91	400	15,75	400	15,75				
6x5-10.5	35	1,38	150	5,91	125	4,92	140	5,51	360	14,17	180	7,09	250	9,84	315	12,40	80	3,15	160	6,30	120	4,72	400	15,75	315	12,40				
6x5-13											180	7,09	250	9,84	355	13,98	80	3,15	160	6,30	120	4,72	400	15,75	315	12,40				
6x5-16											200	7,87	280	11,02	355	13,98	100	3,94	200	7,87	150	5,91	500	19,69	400	15,75				
8x6-8											200	7,87	280	11,02	355	13,98	100	3,94	200	7,87	150	5,91	500	19,69	400	15,75				
8x6-10.5	45	1,77	200	7,87	150	5,91	160	6,30	360	14,17	180	7,09	250	9,84	315	12,40	80	3,15	160	6,30	120	4,72	400	15,75	315	12,40				
8x6-13											180	7,09	250	9,84	355	13,98	100	3,94	200	7,87	150	5,91	500	19,69	400	15,75				
8x6-16											200	7,87	280	11,02	400	15,75	100	3,94	200	7,87	150	5,91	500	19,69	400	15,75				
10x8-13											200	7,87	280	11,02	400	15,75	100	3,94	200	7,87	150	5,91	500	19,69	400	15,75				
10x8-16	55	2,17	250	9,84	200	7,87	225	8,86	725	28,54	315	12,40	435	17,13	100	3,94	100	3,94	150	5,91	500	19,69	450	17,72	140	5,51				
10x8-16			250	9,84	200	7,87	225	8,86	670	26,38	315	12,40	450	17,72	100	3,94	100	3,94	150	5,91	500	19,69	450	17,72	140	5,51				
12x10-13			300	11,81	250	9,84	250	9,84	693	27,28	400	15,75	500	19,69	100	3,94	180	7,09	500	19,69	400	15,75	180	7,09						
12x10-16			300	11,81	250	9,84	250	9,84	797	31,38	450	17,72	505	19,88	125	4,92	125	4,92	210	8,27	600	23,62	500	19,69	180	7,09				

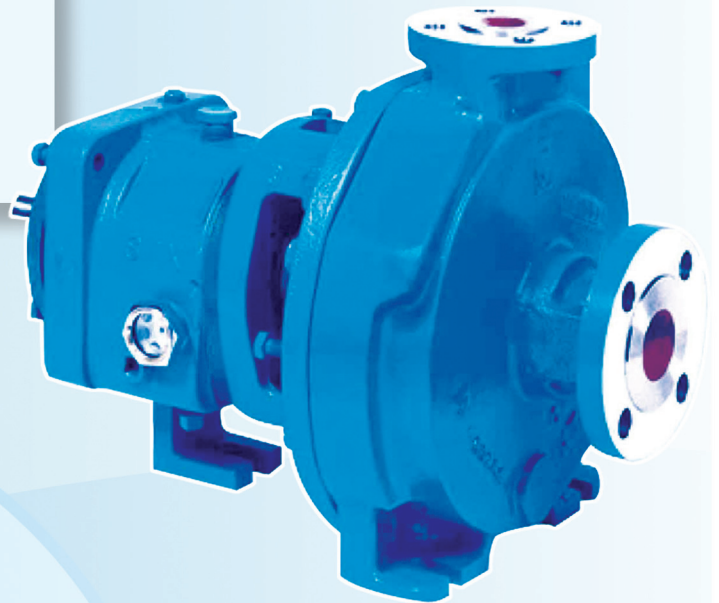
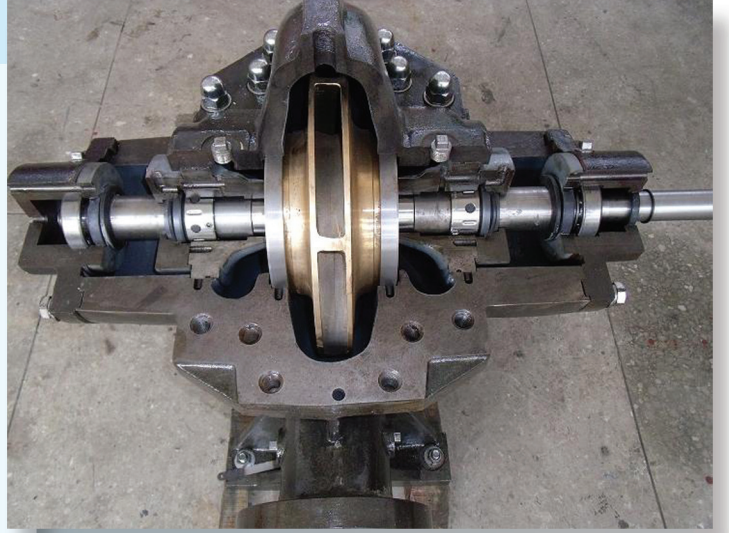


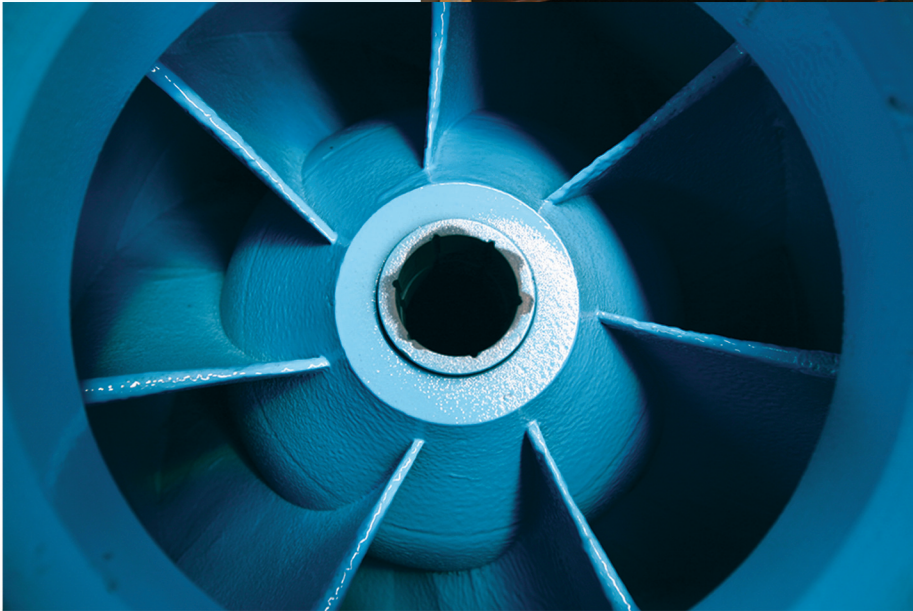
SIDE ELEVATION

Series 2600 Dimensions Chart part 2

Model 2600	Foot Dimensions										Shaft End				Coupling Key		Net Weight	
	h3		φS ₁		φS ₂		w		x		d		l					
	mm	in	mm	in	mm	in	mm	in	mm	in	mm	in	mm	in	mm	in	Kg	lbs.
2x1 .25-5.5																	28	62
2x1 .25-7	14	0,55	14	0,55	14	0,55	267	10,51	140	5,51	24	0,94	50	1,97	8x7	0,31x0,28	36	79
2x1 .25-8.5																	43	95
2x1 .25-10.5																	63	139
2.5x1 .5-5.5							267	10,51			24	0,94	50	1,97	8x7	0,31x0,28	31	68
2.5x1 .5-7							267	10,51			24	0,94	50	1,97	8x7	0,31x0,28	37	81
2.5x1 .5-8.5	14	0,55	14	0,55	14	0,55	267	10,51	140	5,51	24	0,94	50	1,97	8x7	0,31x0,28	46	101
2.5x1 .5-10.5							267	10,51			24	0,94	50	1,97	8x7	0,31x0,28	63	139
2.5x1 .5-13							342	13,46			32	1,26	80	3,15	10x8	0,39x0,31	96	211
2.5x1 .5-13 H							362	14,25			42	1,65	110	4,33	12x8	0,47x0,31	104	229
2.5x2-5.5	14	0,55					267	10,51			24	0,94	50	1,97	8x7	0,31x0,28	34	75
2.5x2-7	14	0,55					267	10,51			24	0,94	50	1,97	8x7	0,31x0,28	38	84
2.5x2-8.5	14	0,55	14	0,55	14	0,55	267	10,51	140	5,51	24	0,94	50	1,97	8x7	0,31x0,28	48	106
2.5x2-10.5	14	0,55					267	10,51			24	0,94	50	1,97	8x7	0,31x0,28	65	143
2.5x2-13	16	0,63					342	13,46			32	1,26	80	3,15	10x8	0,39x0,31	101	222
2.5x2-13 H	16	0,63					364	14,33			42	1,65	110	4,33	12x8	0,47x0,31	110	242
3x2.5-5.5	14	0,55	14	0,55			267	10,51			24	0,94	50	1,97	8x7	0,31x0,28	40	88
3x2.5-7	14	0,55	14	0,55			267	10,51			24	0,94	50	1,97	8x7	0,31x0,28	44	97
3x2.5-8.5	14	0,55	14	0,55	14	0,55	267	10,51	140	5,51	24	0,94	50	1,97	8x7	0,31x0,28	54	119
3x2.5-10.5	16	0,63	18	0,71			342	13,46			24	0,94	80	3,15	10x8	0,39x0,31	83	183
3x2.5-13	16	0,63	18	0,71			342	13,46			32	1,26	80	3,15	10x8	0,39x0,31	110	242
3x2.5-13 H	16	0,63	18	0,71			363	14,29			42	1,65	110	4,33	12x8	0,47x0,31	118	260
4x3-7	14	0,55	14	0,55			267	10,51			24	0,94	50	1,97	8x7	0,31x0,28	55	121
4x3-8.5	14	0,55	14	0,55			342	13,46			32	1,26	80	3,15	10x8	0,39x0,31	72	158
4x3-10.5	16	0,63	18	0,71	14	0,55	342	13,46	140	5,51	32	1,26	80	3,15	10x8	0,39x0,31	92	202
4x3-13	16	0,63	18	0,71			342	13,46			32	1,26	80	3,15	10x8	0,39x0,31	120	264
4x3-13 H	16	0,63	18	0,71			363	14,29			42	1,65	110	4,33	12x8	0,47x0,31	128	282
4x3-16	18	0,71	18	0,71			370	14,57			42	1,65	110	4,33	12x8	0,47x0,31	162	356
5x4-7	16	0,63	18	0,71			342	13,46			32	1,26	80	3,15	10x8	0,39x0,31	81	178
5x4-8.5	16	0,63	18	0,71			342	13,46			32	1,26	80	3,15	10x8	0,39x0,31	87	191
5x4-10.5	16	0,63	18	0,71			342	13,46			32	1,26	80	3,15	10x8	0,39x0,31	110	242
5x4-10.5 H	16	0,63	18	0,71	14	0,55	363	14,29	140	5,51	42	1,65	110	4,33	12x8	0,47x0,31	117	257
5x4-13	16	0,63	18	0,71			342	13,46			32	1,26	80	3,15	10x8	0,39x0,31	134	295
5x4-13 H	16	0,63	18	0,71			363	14,29			42	1,65	110	4,33	12x8	0,47x0,31	143	315
5x4-16	18	0,71	23	0,91			370	14,57			42	1,65	110	4,33	12x8	0,47x0,31	177	389
6x5-8.5	16	0,63	18	0,71			342	13,46			32	1,26	80	3,15	10x8	0,39x0,31	111	244
6x5-10.5	16	0,63	18	0,71	14	0,55	342	13,46	140	5,51	32	1,26	80	3,15	10x8	0,39x0,31	115	253
6x5-13	18	0,71	23	0,91			370	14,57			42	1,65	110	4,33	12x8	0,47x0,31	163	359
6x5-16	18	0,71	23	0,91			370	14,57			42	1,65	110	4,33	12x8	0,47x0,31	190	418
8x6-8	20	0,79					367	14,45			32	1,26	80	3,15	10x8	0,39x0,31	140	308
8x6-10.5	18	0,71					370	14,57			42	1,65	110	4,33	12x8	0,47x0,31	164	361
8x6-13	18	0,71	23	0,91	14	0,55	370	14,57	140	5,51	42	1,65	110	4,33	12x8	0,47x0,31	175	385
8x6-16	18	0,71					370	14,57			42	1,65	110	4,33	12x8	0,47x0,31	210	462
10x8-13							500	19,69			48	1,89			14x10	0,55x0,39	251	552
10x8-16							500	19,69			48	1,89			14x10	0,55x0,39	295	649
12x10-13	30	1,18	23	0,91	14	0,55	513	20,20	140	5,51	48	1,89	110	4,33	14x10	0,55x0,39	311	684
12x10-16							611	24,06			60	2,36			18x12	0,7x0,47	390	858

Company's Other Products







Proud pumps supplier for the New World Trade Center towers in New York

We are also a proud pumps supplier for the following completed and ongoing projects:



James Haley VA Hospital

Tampa, Florida
www.tampa.va.gov
 Eng: IC Thomasson Association Incorporated

Morton Plant North Bay Hospital

New Port Richey, Florida
www.mortonplant.com
 Eng: IC Thomasson Association Incorporated



Palm Beach Gardens Medical Center - ER Expansion

Plam Beach Gardens, Florida
www.pbgmc.com
 Eng: IC Thomasson Association Incorporated

Museum of Science and Industry

Tampa, Florida
www.mosi.org
 Eng: Advanced Systems Engineering



St-Joseph's Women's Hospital

Tampa, Florida
www.sjbhealth.org
 Eng: Smith, Seckman, Reid Engineering

FLO FAB Inc.

USA

Lake Worth
 Florida
 USA
 33467-5749

CANADA

860 Industriel Blvd
 Bois-des-Filion, Quebec
 J6Z 4V7
 Canada
 Tel.: (450) 621-2995
 Fax: (450) 621-4995