

FLO FAB

Double Suction Split Case

Series 4800 U/L

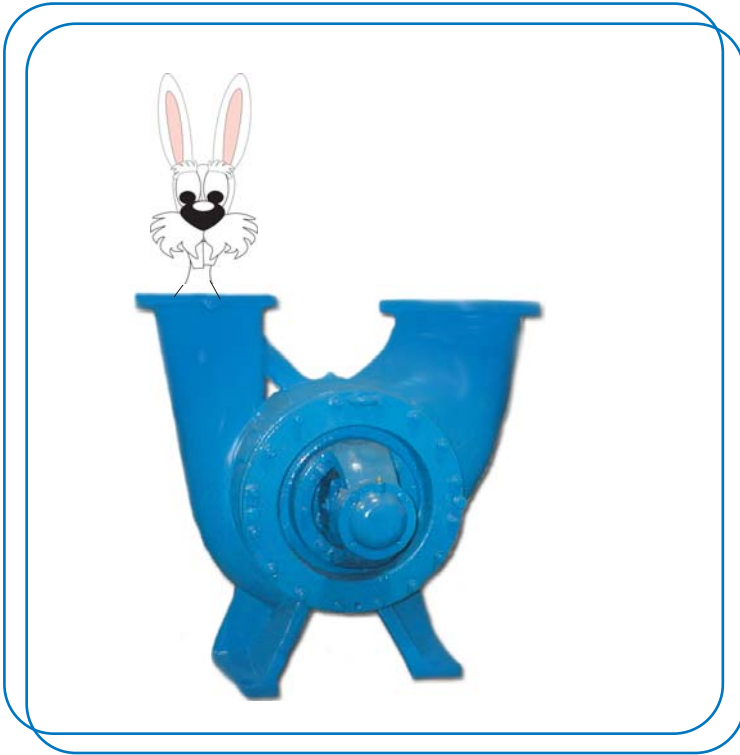


www.flofab.com

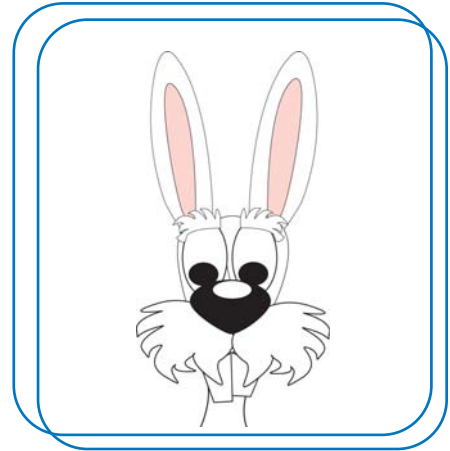
Manufacturer of Pumps, Tanks, Heat Exchangers & Accessories
for HVAC Market After-Sales Parts and Services

Double Suction Split Case
Series 4800 U/L

FLO FAB INC
LAKE WORTH,
FLORIDA, USA



Series 4800 U "Alert Rabbit"



Features

Application: The series 4800 U/L "Rabbit Ear Pumps" are double suction split case type and are most commonly applied for heating and air conditioning systems or other industrial applications.

Capacity: Flows up to 12 000 USGPM

Head: up to 750 ft.

Maximum Working Temperature: up to 220°F

Maximum Working Pressure: up to 231PSI

Construction

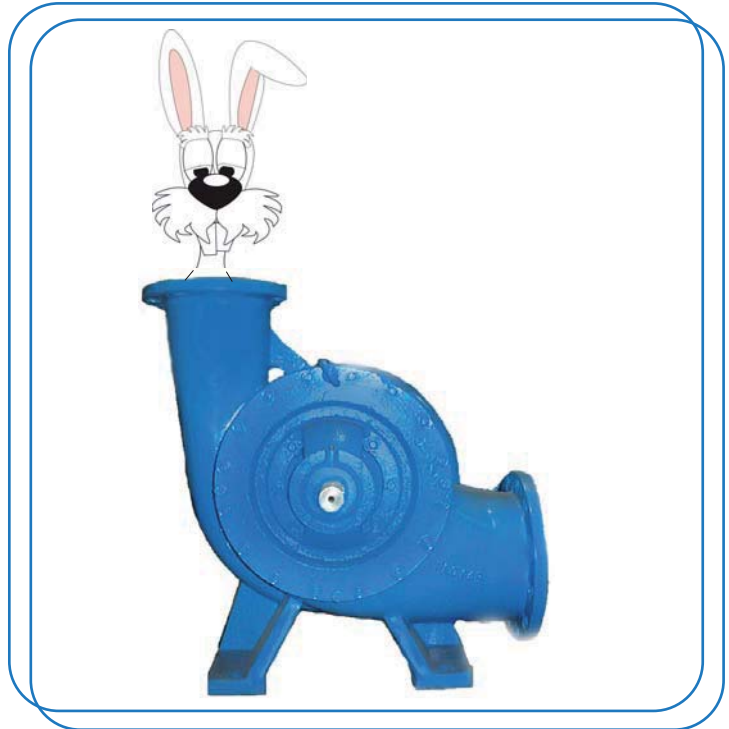
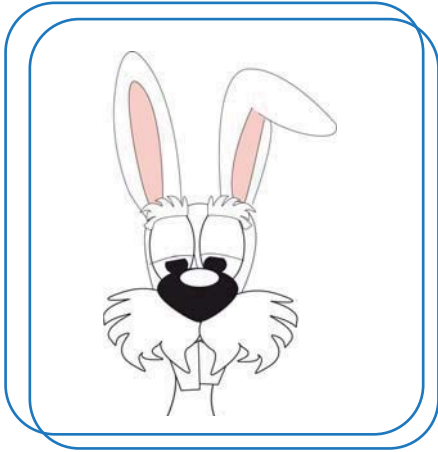
Bearing Bracket: Shaft is a high grade alloy steel for highest yield and tensile strength, precision turned, grounded and polished. The ball bearing assembly employs precision over-size bearings front and back to handle thrust and radial loads. These bearings are factory greased for longer lasting trouble-free operation. The bearing assembly can be removed for maintenance without disturbing the piping.

Casing: The casing is of double-volute design, accomplishing two functions: First: radial impeller loads are reduced, for smaller bearing loads, and less power loss. Second: higher pump efficiencies are obtained over a greater range of flow.

Coupling: Rugged in construction, longer bearing, motor and pump life as well as smooth, quiet operation of both motor and pump are assured. Simple in design and easily installed, the couplings are unaffected by abrasives, dirt or moisture. There is no need for lubrication or maintenance. The non-metallic sleeve acts as a barrier insulating the motor from the pump, a coupling guard is supplied as standard equipment.



Series 4800 L "Saluting Rabbit"



Construction (continue)

Motors: Only the highest quality name brand motors specially selected for quietness are used on series 4800 U/L pumps. Ball bearing motors are standard. Motors are 1150, 1750 and 3450 RPM. The motors are sized so that the maximum brake Horsepower output is less than allowed by the motor manufacturer's warranty.

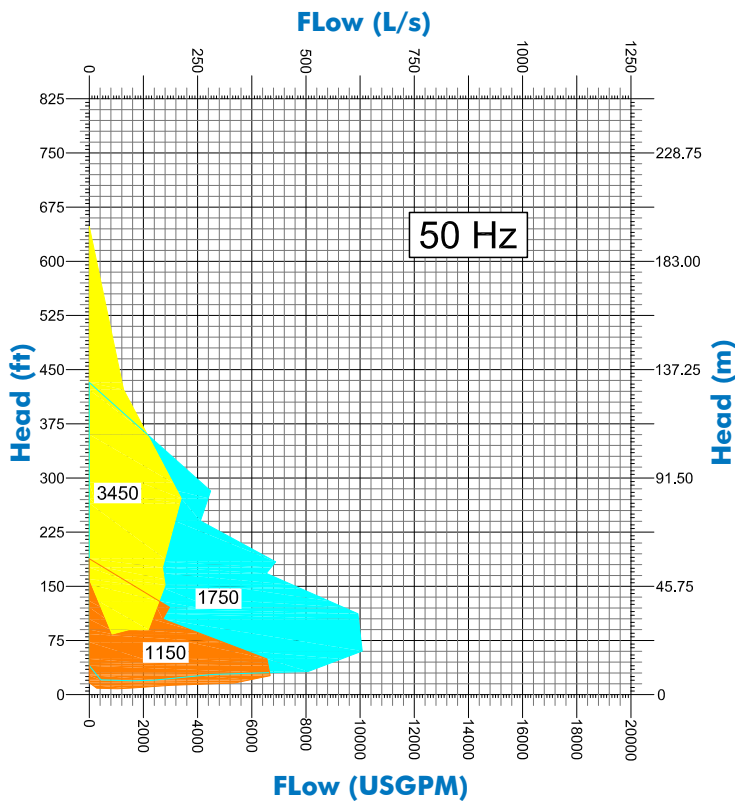
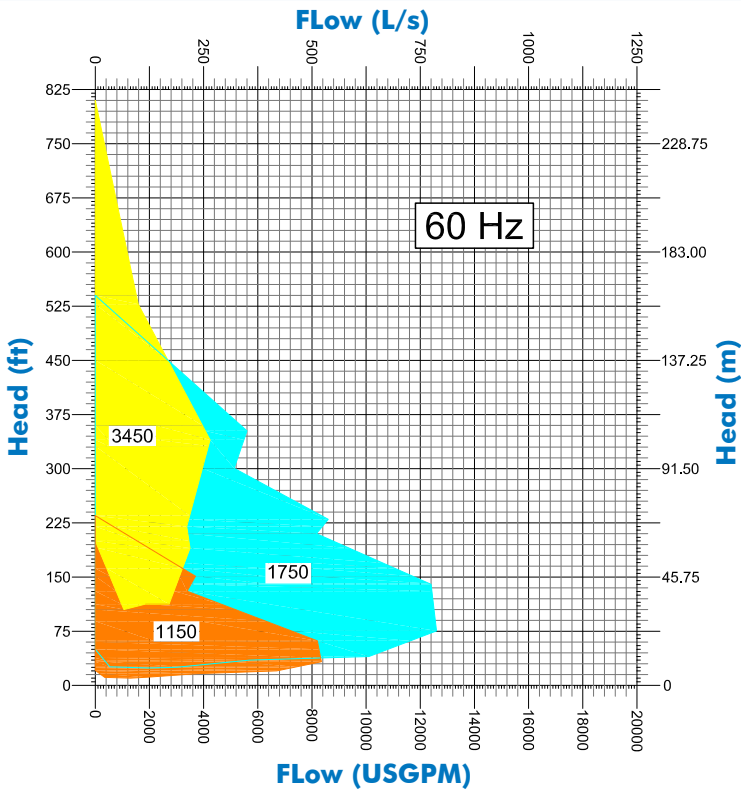
Base: The pump baseplate is constructed of structural steel channel. These base assemblies are supplied with integral feet for ease of installation and leveling on a foundation. The free area beneath the motor and pump assembly eliminates the sound box effect of solid bases and allows for neater installation and facilitates cleaning in the pump area.

Suction and Discharge Connections: Located on the top of the casing (4800U), which results in additional space saving and ease of piping

Mechanical Seals: The mechanical seals used in series 4800 U/L pumps are specially selected and as applied to these pump suitable for water temperatures up to 220°F. The carbon rotating member and ni-resist stationary member with precision lapped surfaces insure long life and positive prevention of leakage. Access plate in the front of the case readily allows seal replacement when required, without disturbing piping, bearing assembly, coupling or motor.

Impeller: Enclosed bronze impeller for double suction, is machined all over for greatest efficiency. All impellers are hydraulically balanced to assure minimum thrust.

Wearings: Cast Iron impeller or casing wearings are supplied as standard. These wearings are replaceable and prevent costly wear to both the casing and the impeller. Bronze or Stainless Steel is optional.



**1150 & 1750 RPM
Pump Models
and Sizes**

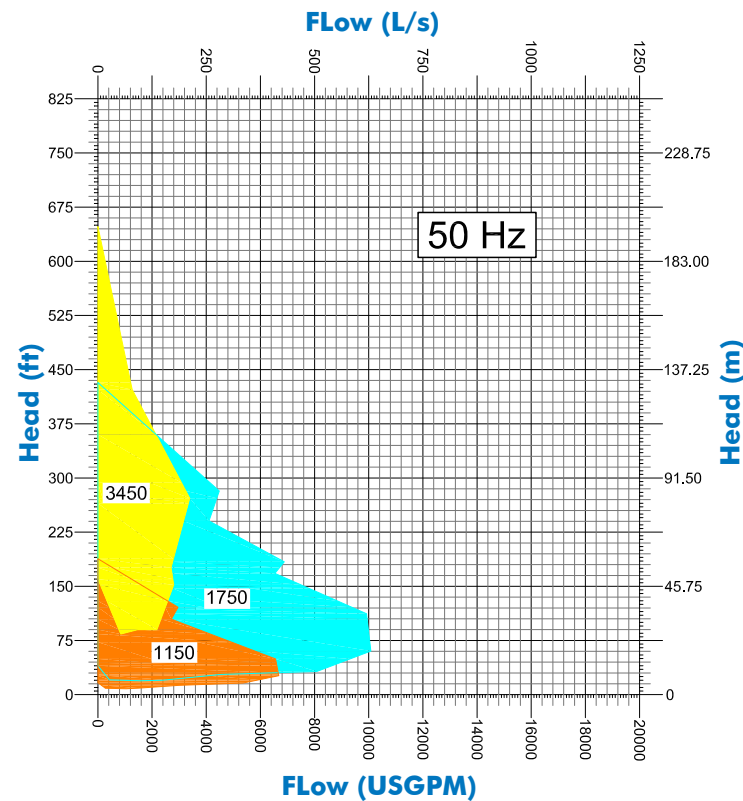
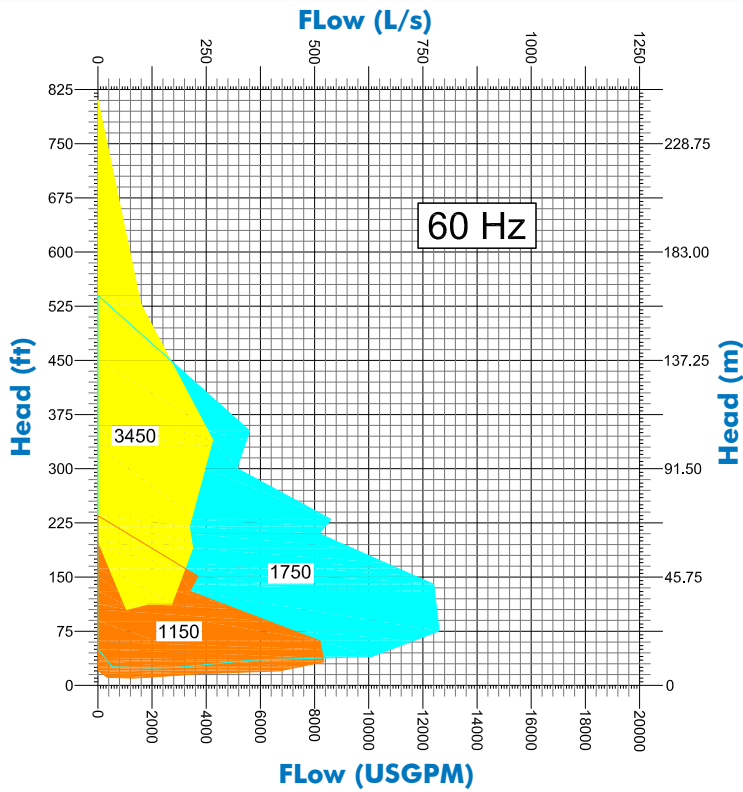
**3450 RPM
Pump Models
and Sizes**

- | | |
|----------------------|-------------------|
| 1 5 x 3 x 8.4 U | 1 5 x 3 x 8.4 U |
| 2 5 x 3 x 9.84 U | 2 5 x 3 x 9.84 U |
| 3 5 x 3 x 13.58 U | 3 5 x 3 x 13.58 U |
| 4 6 x 4 x 10 U | 4 6 x 4 x 10 U |
| 5 6 x 4 x 12.2 U | 5 6 x 4 x 12.2 U |
| 6 6 x 4 x 14.76 U | 6 8 x 5 x 9.64 U |
| 7 6 x 4 x 16.06 U | 7 8 x 5 x 11.81 U |
| 8 8 x 5 x 9.64 U | |
| 9 8 x 5 x 11.81 U | |
| 10 8 x 5 x 15.15 U | |
| 11 8 x 5 x 18 U | |
| 12 8 x 6 x 10.94 U | |
| 13 8 x 6 x 13.58 U | |
| 14 8 x 6 x 17.87 U | |
| 15 8 x 6 x 21.33 U | |
| 16 10 x 8 x 12.7 U | |
| 17 10 x 8 x 16.22 U | |
| 18 10 x 8 x 20.7 U | |
| 19 12 x 10 x 14.76 U | |
| 20 12 x 10 x 18.18 U | |
| 21 14 x 12 x 12.12 U | |
| 22 16 x 12 x 17.32 U | |
| 23 16 x 14 x 15.03 U | |





FLO FAB Performance Curves Series 4800 L "Saluting Rabbit"



1150 & 1750 RPM Pump Models and Sizes

3450 RPM Pump Models and Sizes

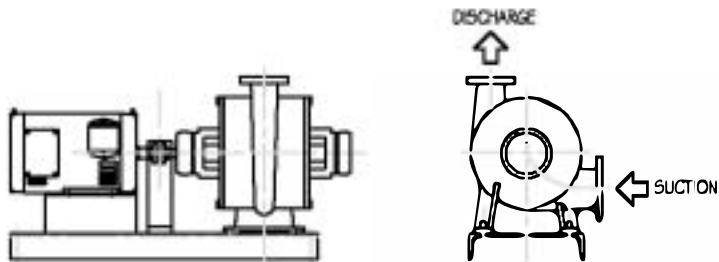
- | | |
|----------------------------|-------------------|
| 1 5 x 3 x 8.4 L | 1 5 x 3 x 8.4 L |
| 2 5 x 3 x 9.84 L | 2 5 x 3 x 9.84 L |
| 3 5 x 3 x 13.58 L | 3 5 x 3 x 13.58 L |
| 4 6 x 4 x 10 L | 4 6 x 4 x 10 L |
| 5 6 x 4 x 12.2 L | 5 8 x 5 x 9.64 L |
| 6 6 x 4 x 14.76 L | 6 8 x 5 x 11.81 L |
| 7 6 x 4 x 16.06 L | 7 8 x 6 x 10.94 L |
| 8 8 x 5 x 9.64 L | |
| 9 8 x 5 x 11.81 L | |
| 10 8 x 5 x 15.15 L | |
| 11 8 x 5 x 18 L | |
| 12 8 x 6 x 10.94 L | |
| 13 8 x 6 x 13.58 L | |
| 14 8 x 6 x 17.87 L | |
| 15 8 x 6 x 21.33 L | |
| 16 10 x 8 x 12.7 L | |
| 17 10 x 8 x 16.22 L | |
| 18 10 x 8 x 20.7 L | |
| 19 12 x 10 x 1.1% L | |
| 20 1 (x 1 & x 1 & 1 & 1 L | |
| 21 1* x 12 x 1+. ' 2 L | |
| 22 16 x 1 (x 1).\$. ' L | |



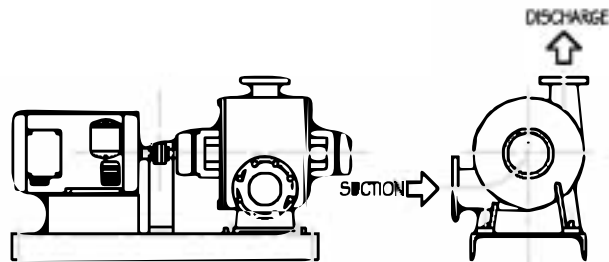


SERIES 4800 PUMPS

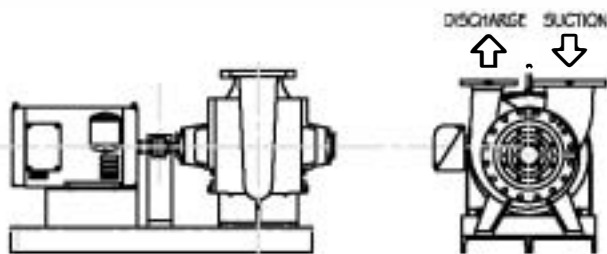
OPTIONS : LEFT HAND OR RIGHT HAND ROTATION



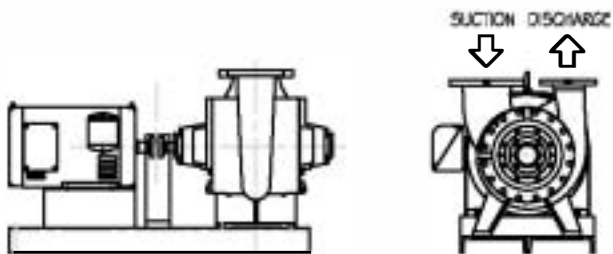
SERIES 4800L - LEFT HAND ROTATION
COUNTER CLOCKWISE ROTATION



SERIES 4800R - RIGHT HAND ROTATION
CLOCKWISE ROTATION



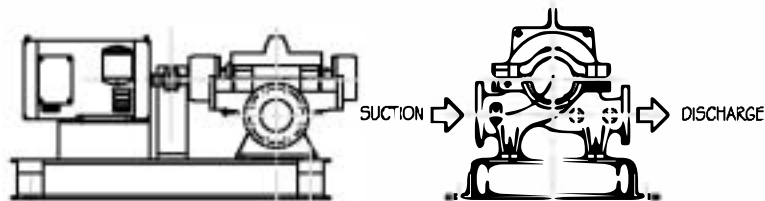
SERIES 4800U - LEFT HAND ROTATION
COUNTER CLOCKWISE ROTATION



SERIES 4800U - RIGHT HAND ROTATION
CLOCKWISE ROTATION



SERIES 4800 - LEFT HAND ROTATION
COUNTER CLOCKWISE ROTATION



SERIES 4800 - RIGHT HAND ROTATION
CLOCKWISE ROTATION

PUMP TAG NO : _____

ACCEPTED BY : _____

DATE : _____

For Future Use

FF

FLO FAB



**Manufacturer of Pumps, Tanks, Heat Exchangers & Accessories
for HVAC Market After-Sales Parts and Services**

www.flofab.com

FLO-FAB INC
LAKE WORTH,
FLORIDA, USA

SEPTEMBER 2009