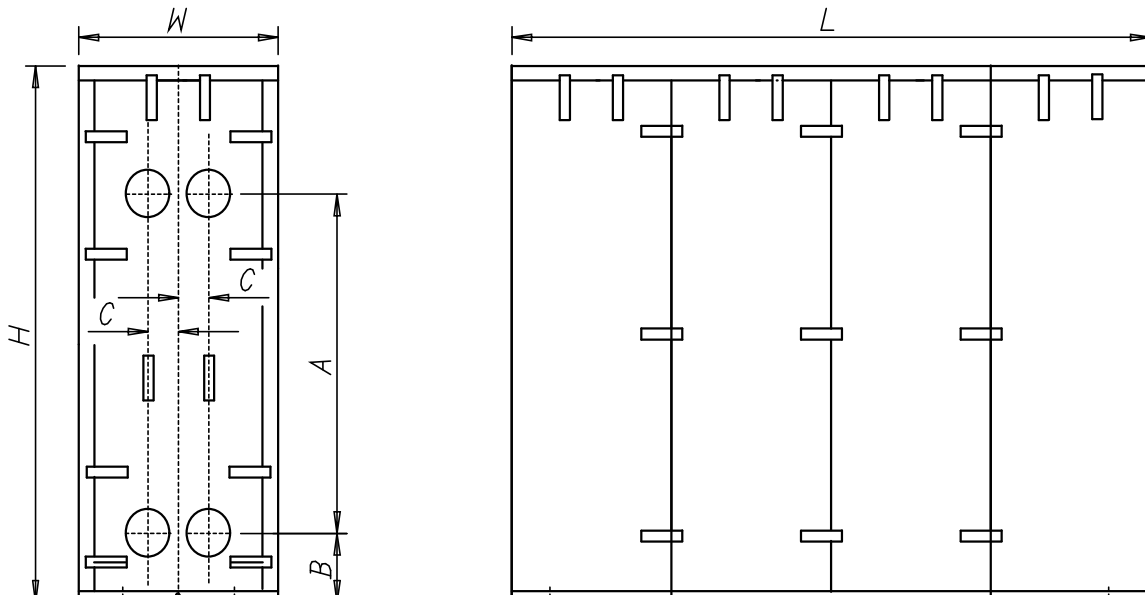




SUBMITTAL

TYPE: FFW-SERIES INSULATION
 PACKAGE FOR PLATE HEAT EXCHANGER
 HEATERS **Models:** FFW-11 thru FFW 43

Job Name _____	Submitted By _____	Date _____
Location _____	Approved By _____	Date _____
_____	Order No. _____	Date _____
Engineer _____	Notes _____	
Contractor _____	_____	
Sales Rep. _____	_____	



FS = Frame Size

Dimensions of One Unit

Model	Conn Size	H	W	L	A	B	C
FFW11	1"	24"	13"	FS + 15"	15"	3.5"	1.4"
FFW12	1"	35"	13"	FS + 15"	26"	3.5"	1.4"
FFW22	2"	27"	18"	FS + 15"	15.5"	5.1"	2.5"
FFW23	2"	39"	18"	FS + 15"	27.4"	5.1"	2.5"
FFW24	2"	48"	18"	FS + 15"	35.2"	5.1"	2.5"
FFW30	3"	30"	21"	FS + 15"	15"	5.5"	3.8"
FFW42	4"	48"	24"	FS + 16"	28.3"	7.2"	4.5"
FFW43	4"	48"	24"	FS + 16"	28.3"	7.2"	4.5"

Construction

Specification

Provide a plate heat exchanger insulation package with a minimum R-13 that consists of self supporting removeable panels held together with clasps. Clasps to be high strength with over center catch and zinc coated steel.

Materials

Insulation Board: 2" Polyisocyanurate foam core with reinforced polymer reflective foil outer face with reinforced coated inner face.