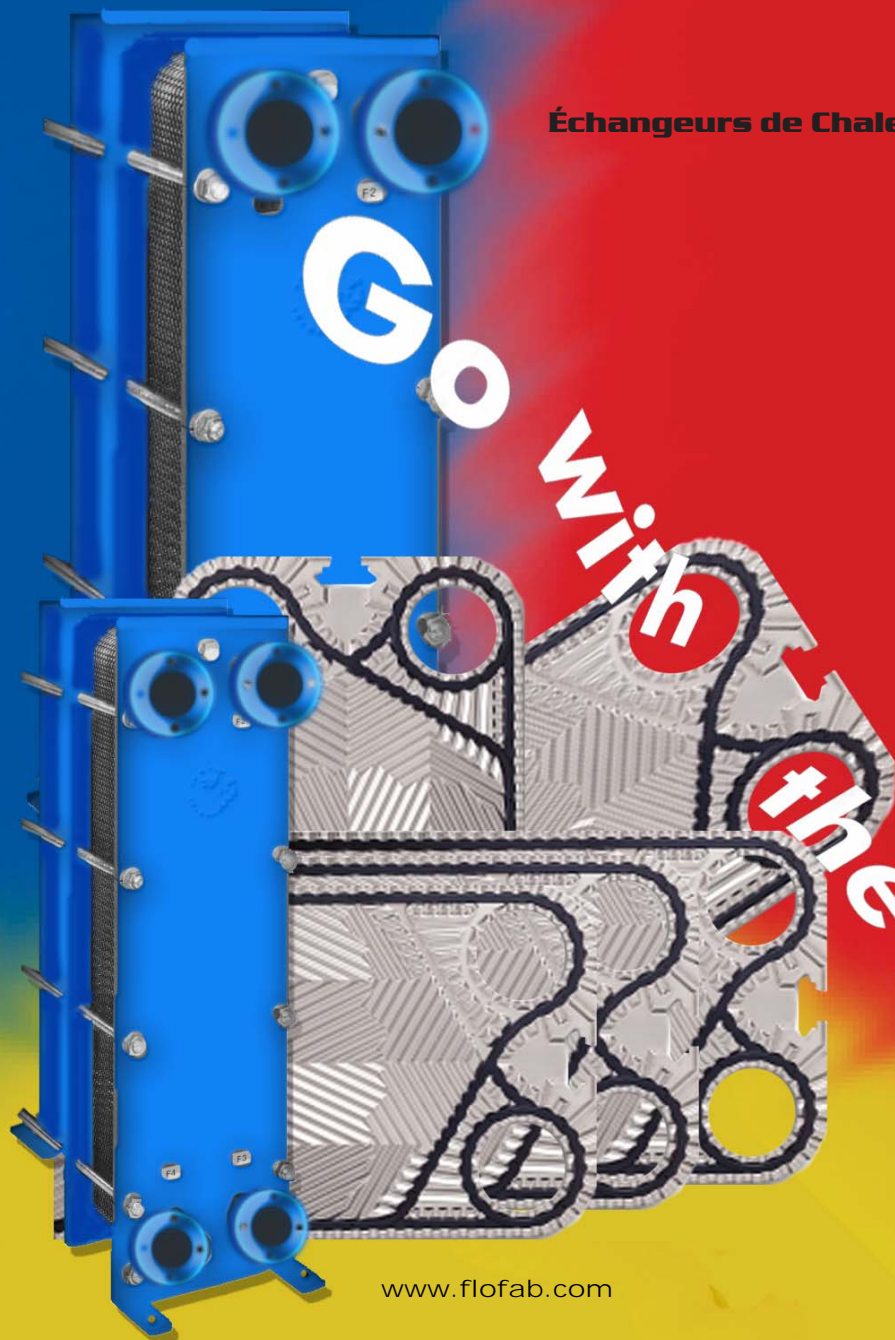




# FLO FAB

Section 8.2

**Manufacturier de Pompes, Réservoirs, Échangeurs et Accessoires HVAC.  
Service après vente et Réparations.**



**Échangeurs de Chaleur à Plaques**

Go  
With  
the  
FLO

[www.flofab.com](http://www.flofab.com)



## CARACTÉRISTIQUES

FLO FAB a une solution optimale pour toutes les tâches possibles, avec sa grande gamme d'échangeurs de chaleur à plaques, qui possède des connexions de 1/2" (15mm) à 20" (500mm) et qui peut couvrir une gamme de débit de liquide variant de 0.22 USGPM (0.83 L/min) à 8 805 USGPM (33 330 L/min).

## CONCEPTION DES PLAQUES

**CONNEXION D'ASPIRATION:** Leur conception permet une distribution parfaite du liquide en travers de la surface chauffante. Les connexions sont plus grandes et leurs brides sont rainurées afin d'éviter les "points morts" qui provoquent la formation de bactéries dans les échangeurs à plaques. Les connexions à brides rainurées permettent un assemblage solide avec le moins de points de contact que possible. Les connexions d'aspiration sont équipées d'une zone de drainage des fuites pour répondre à la spécification 3A.

**PLAQUES:** Leur conception est pensée de façon à obtenir une efficacité thermique maximale. Les plaques sont disponibles en deux modèles avec différentes grandeurs d'angles qui permettent un débit plus haut avec moins de turbulences. Combinées en paquets, les plaques permettent une composition optimale calculable. L'angle et la conception en queue de poisson permettent une meilleure transmission de chaleur uniforme pour une baisse de pression donnée.

## RENFORCEMENT DES REBORDS

Afin de renforcer la rainure de joint, l'échangeur de chaleur à plaques de FLO FAB est conçu avec des rainures profondes et raides qui retiennent parfaitement le joint en place. Ce qui donne une durabilité accrue au joint et à la plaque.

## JOINT

Le joint est placé dans la rainure de joint parfaitement adaptée. Ce concept assure une élasticité du joint même après une installation prolongée. La nouvelle génération d'échangeurs de chaleur à plaques de FLO FAB a été développée avec un système de joints sans colle; le joint "FLO FAB Lock". Le "FLO FAB Lock" est fixé par des boutons de caoutchouc résistants qui permettent au joint, contrairement à la plupart des joints sans colle d'aujourd'hui, de rester réellement fixé dans sa rainure.

## PLAQUES À DÉBIT LIBRE

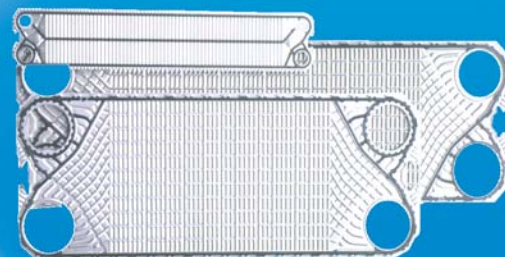
Les plaques à débit libre de FLO FAB sont conçues pour les liquides contenant des fibres ou autres matériaux pouvant obstruer les échangeurs à plaques traditionnelles. Les plaques à débit libre sont conçues sans contact métallique entre elles dans l'espace contenant le liquide. Ce qui permet d'éviter la turbulence et d'augmenter le coefficient de transmission de chaleur sur une période d'opération plus longue.

## AUTRES AVANTAGES ET CHAMPS D'APPLICATIONS

- 1) La conception donne une plaque plus résistante et plus stable
- 2) Peut être utilisé dans l'industrie du papier et de la cellulose
- 3) Peut être utilisé pour refroidir la moutarde, la sauce tomate et autres produits visqueux
- 4) Nettoyage CIP possible
- 5) Conforme aux standards de la spécification 3A

## PLAQUES SEMI-SOUDÉES

Les plaques semi-soudées sont montées en cassettes. Une cassette de plaques est 2 plaques soudées ensemble au moyen de la soudure au laser. L'avantage de ce concept est que d'un côté de la plaque il y a un espace soudé et de l'autre un espace avec joint. Ceci facilite l'entretien et le nettoyage du côté du joint. Le côté soudé est conçu avec deux joints en coin qui resserrent les cassettes ensemble. De cette façon, les joints sont restreints au minimum du côté soudé.

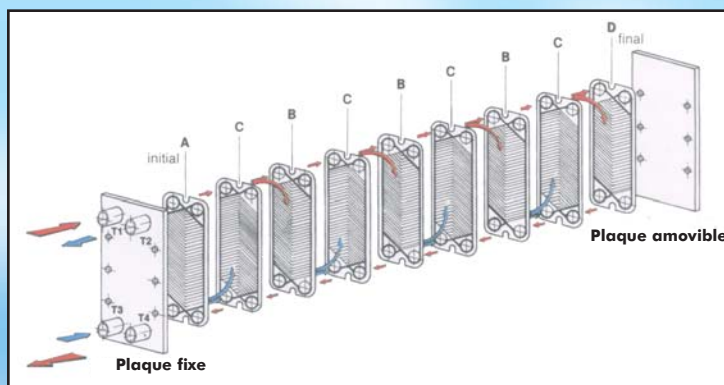




# FF FLO FAB Échangeurs de Chaleur à Plaques

## AUTRES AVANTAGES ET APPLICATIONS

- 1) Ce type d'échangeurs de chaleur est spécialement conçu pour le secteur de la réfrigération et pour les tâches qui utilisent des médias agressifs.
- 2) La soudure des cassettes est faite à l'extérieur des rainures de joint. Ceci élimine pratiquement le risque de corrosion dans la rainure de joint.
- 3) Lorsque la soudure est à l'extérieur de la rainure de joint, l'espace de transmission de chaleur est utilisée de façon optimale.
- 4) Les cassettes de plaques sont fournies avec des joints de coin qui se resserrent avec l'augmentation de pression.
- 5) Comme les cassettes traditionnelles, celles-ci sont conformes aux standards US 3A ce qui rend les échangeurs à plaques de FLO FAB compatibles avec les tâches sanitaires.

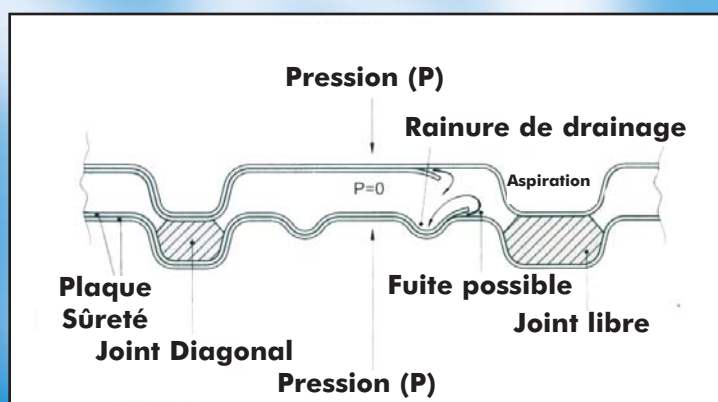


## PLAQUES DE SÛRETÉ FLO FAB

Le système de plaques de sûreté de FLO FAB consiste en deux plaques de débit très minces superposées. Ces deux plaques forment une paire qui permet de voir les fuites possibles de l'extérieur. Ce dispositif permet d'éviter les mélanges de produits et de donner un avertissement de possibilité de fuite.

## CHAMPS D'APPLICATIONS

- 1) Pasteurisation du lait et de la crème
- 2) Eau sanitaire pour l'industrie alimentaire
- 3) Eau pour injections médicales (Ultra pure)
- 4) Pour des raisons de sécurité dans l'industrie nucléaire
- 5) Chauffage de quartier/eau de robinet
- 6) Refroidissement de moteur

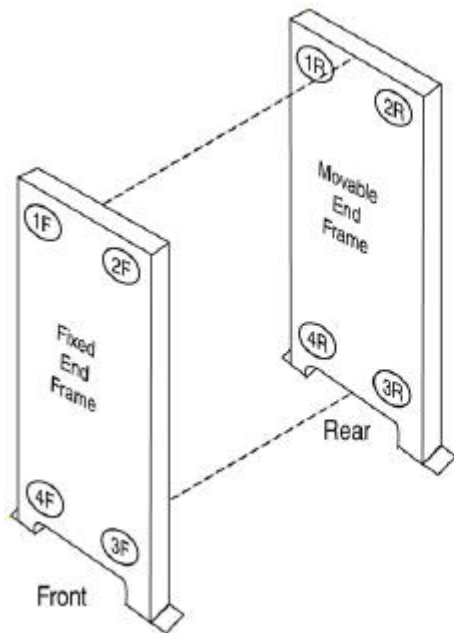


## FLO FAB Inc.

**Manufacturier** de Pompes, Systèmes à l'huile, Systèmes de Glycol, Échangeur de Chaleur, Réservoirs d'Expansion, Chauffe-eau Valves et autres accessoires...

**Manufacturer** of Pumps, Fuel Oil and Glycol Fill Systems, Heat Exchangers, Expansion and Hot Water Storage Tanks, Valves and other accessories...

### Connection Layout:



### Port Numbering

Looking at fixed end, clockwise 1-4.

#### Front

1F - Top left, fixed end frame

2F - Top right, fixed end frame

3F - Bottom right, fixed end frame

4F - Bottom left, fixed end frame

#### Rear

1R - Top left, movable end frame



2R - Top right, movable end frame

3R - Bottom right, movable end frame

4R - Bottom left, movable end frame

## Connection Descriptions

\*Always describe port locations as viewed from the fixed end.

\*Starting in the upper left-hand corner, number the ports 1 thru 4 in a clockwise manner.

\*Ports on the fixed end use an "F" suffix.

\*Ports on the movable end use an "R" suffix.

## Connection Location

Standard single pass unit connection location:

Hot In – 1F

Hot Out – 4F

Cold In – 3F

Cold Out – 2F

Multiple pass unit connection location depends on the number of passes. For example a two pass unit connection location:

Hot In – 4F

Hot Out – 4R

Cold In – 3R

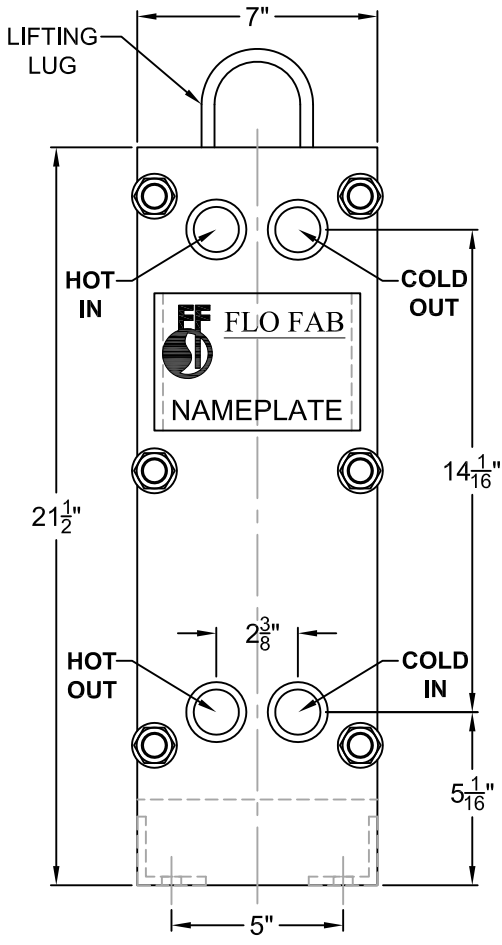
Cold Out – 3F

---

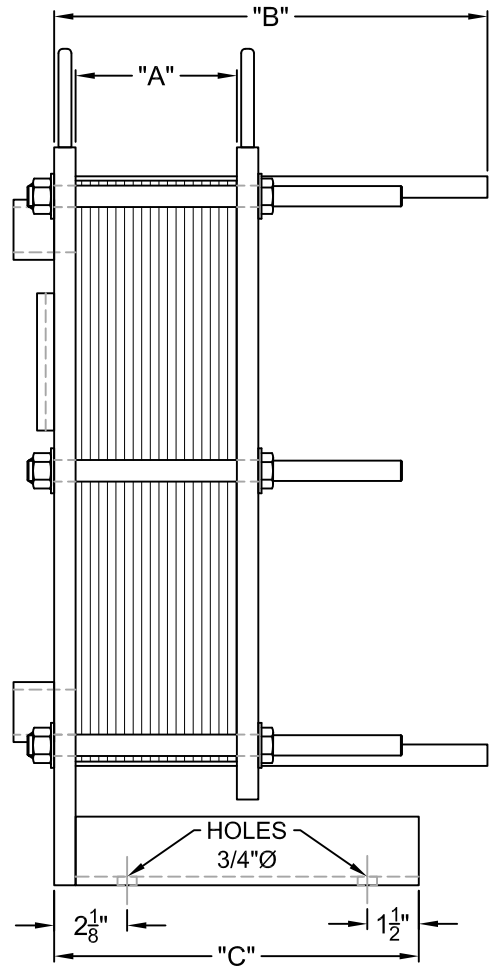
860 boul. Industriel, Bois-des-Filion (Québec) J6Z 4V7  
Tél. : (450) 621-2995 Fax : (450) 621-4995

NOTE: DETAIL "A" SEE DATA SHEET  
 DETAIL "B" & "C" REFER TO AS BUILT  
 DRAWING (ON DEMAND)

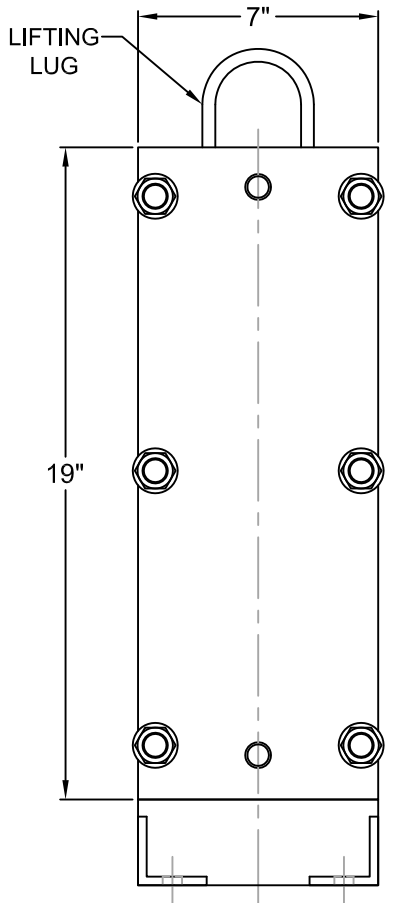
**SUBMITTAL SHEET**  
 ISSUE DATE: 2008/06/10  
 REVISION DATE: 2009/03/17  
 SECTION: 8



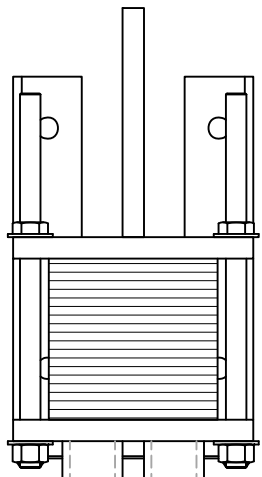
**FRONT VIEW**



**SIDE VIEW**



**REAR VIEW**



**HOT SIDE**  
**COLD SIDE**

**TOP VIEW**

**STANDARD MATERIALS OF CONSTRUCTION**

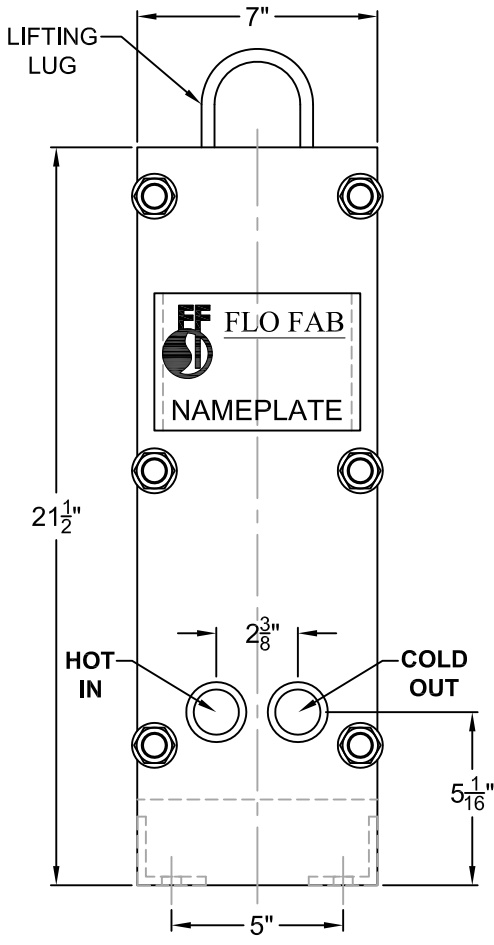
- CONNECTION.....1" HALF-COUPLING
- FIXED PLATES.....SA-515-70, SA-516-70, OR EQUIV.
- END FRAMES.....SA-515-70, SA-516-70, OR EQUIV.
- PLATE HANGER.....TYPE 304S/S
- COMPRESSION BOLTS (ZINC PLATED).....SA-193-B7
- COMPRESSION NUTS (ZINC PLATED).....SA-194-2H
- CONNECTION STUDS (ZINC PLATED).....SA-193-B7
- CONNECTION NUTS (ZINC PLATED).....SA-193-2H
- SHROUD (OPTIONAL).....ALUMINIUM PAINT
- PAIN.....CORROSION RESISTANT PAINT

TYPICAL DRAWING, FINALE DIMENSIONS AND DESIGN MAY VARY DESSIN TYPIQUE, LES DIMENSIONS FINALES ET LE DESIGN PEUVENT VARIER.			
TITLE / TITRE <b>PLATE HEAT EXCHANGERS (1 PASS)</b> <b>MODEL FF84 (OPTION DOUBLE WALL AVAILABLE)</b>			
<b>FF FLO FAB</b> <b>AQUA PROFAB</b> <small>860 BOULEVARD INDUSTRIEL        BOIS-DES-FILION, QC        J6Z 4V7, (450) 621-2995</small>	PROJECT / PROJET		DATE / DATE
	CUSTOMER / CLIENT		
DRAWN BY / DESSINATEUR <b>M. LYMBURNER</b>	SCALE / ECHELLE <b>N / A</b>	DRAWING N° / N° DESSIN <b>FF84 (1 PASS)</b>	REV <b>0</b>

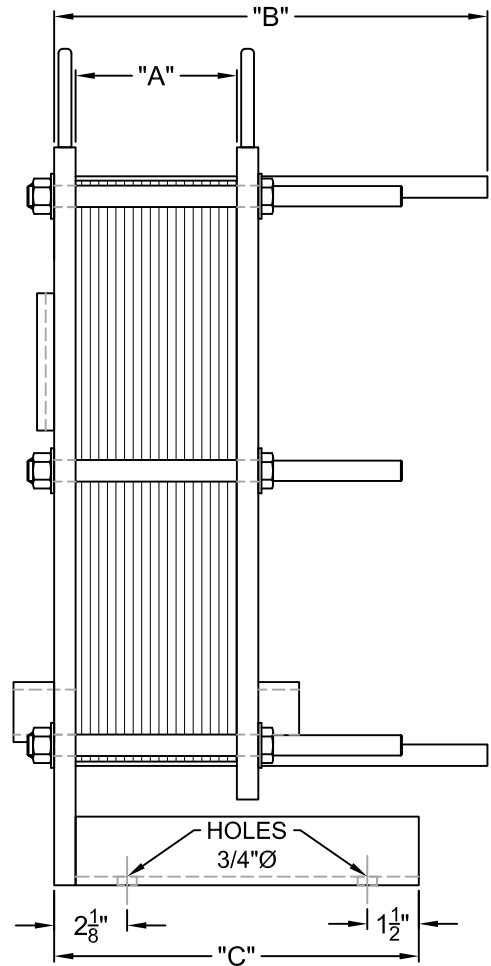
\*\*\*DIMENSIONS SUBJECT TO CHANGE WITHOUT NOTICE. DO NOT USE FOR CONSTRUCTION PURPOSES.  
 \*\*\*LES DIMENSIONS SONT SUJET AU CHANGEMENT SANS PRÉAVIS. NE PAS UTILISER POUR RÉFÉRENCE DE CONSTRUCTION.

NOTE: DETAIL "A" SEE DATA SHEET  
 DETAIL "B" & "C" REFER TO AS BUILT  
 DRAWING (ON DEMAND)

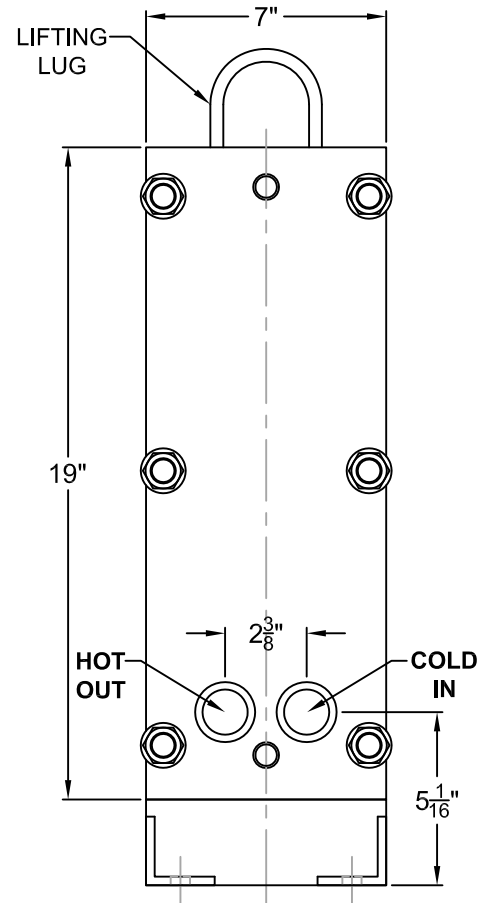
**SUBMITTAL SHEET**  
 ISSUE DATE: 2008/06/10  
 REVISION DATE: 2009/03/17  
 SECTION: 8



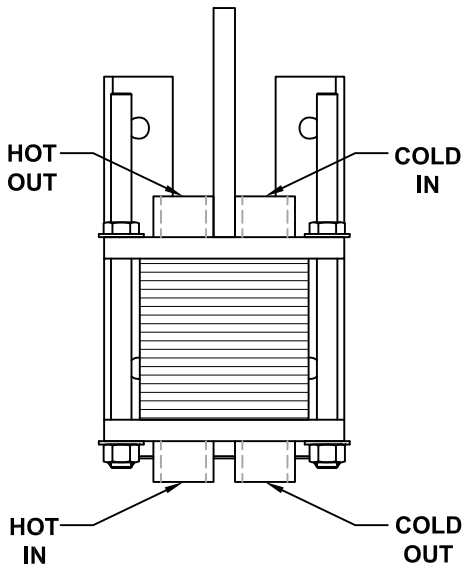
**FRONT VIEW**



**SIDE VIEW**



**REAR VIEW**



**TOP VIEW**

**STANDARD MATERIALS  
 OF CONSTRUCTION**

- CONNECTION.....1" HALF-COUPLING
- FIXED PLATES.....SA-515-70, SA-516-70, OR EQUIV.
- END FRAMES.....SA-515-70, SA-516-70, OR EQUIV.
- PLATE HANGER.....TYPE 304S/S
- COMPRESSION BOLTS (ZINC PLATED).....SA-193-B7
- COMPRESSION NUTS (ZINC PLATED).....SA-194-2H
- CONNECTION STUDS (ZINC PLATED).....SA-193-B7
- CONNECTION NUTS (ZINC PLATED).....SA-193-2H
- SHROUD (OPTIONAL).....ALUMINIUM
- PAINT.....CORROSION RESISTANT PAINT

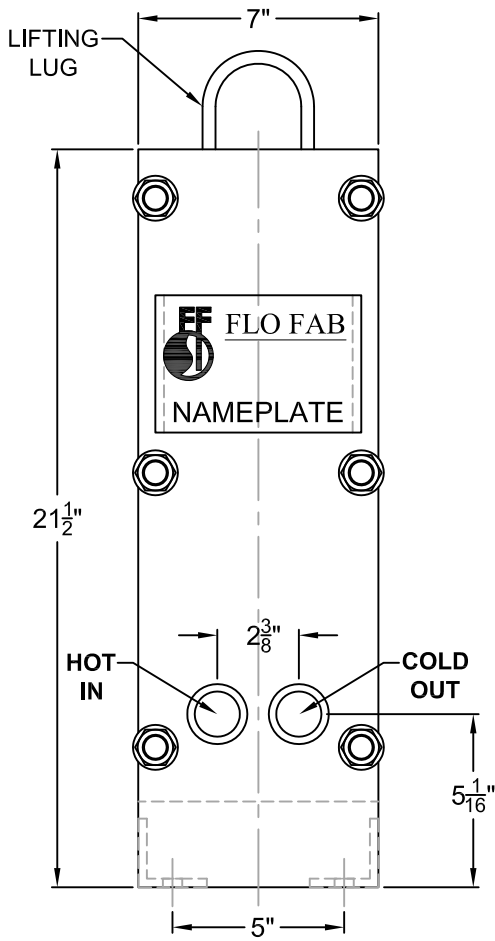
TYPICAL DRAWING, FINALE DIMENSIONS AND DESIGN MAY VARY DESSIN TYPIQUE, LES DIMENSIONS FINALES ET LE DESIGN PEUVENT VARIER.			
TITLE / TITRE <b>PLATE HEAT EXCHANGERS (2 PASS)      MODEL FF84 (OPTION DOUBLE WALL AVAILABLE)</b>			
 860 BOULEVARD INDUSTRIEL BOIS-DES-FILION, QC J6Z 4V7, (450) 621-2995		PROJECT / PROJET CUSTOMER / CLIENT PART LIST N° / LISTE DE MATERIEL N° DATE / DATE	
DRAWN BY / DESSINATEUR <b>M. LYMBURNER</b>	SCALE / ECHELLE <b>N / A</b>	DRAWING N° / N° DESSIN <b>FF84 (2 PASS)</b>	REV <b>0</b>

\*\*\*DIMENSIONS SUBJECT TO CHANGE WITHOUT NOTICE. DO NOT USE FOR CONSTRUCTION PURPOSES.  
 \*\*\*LES DIMENSIONS SONT SUJET AU CHANGEMENT SANS PRÉAVIS. NE PAS UTILISER POUR RÉFÉRENCE DE CONSTRUCTION.

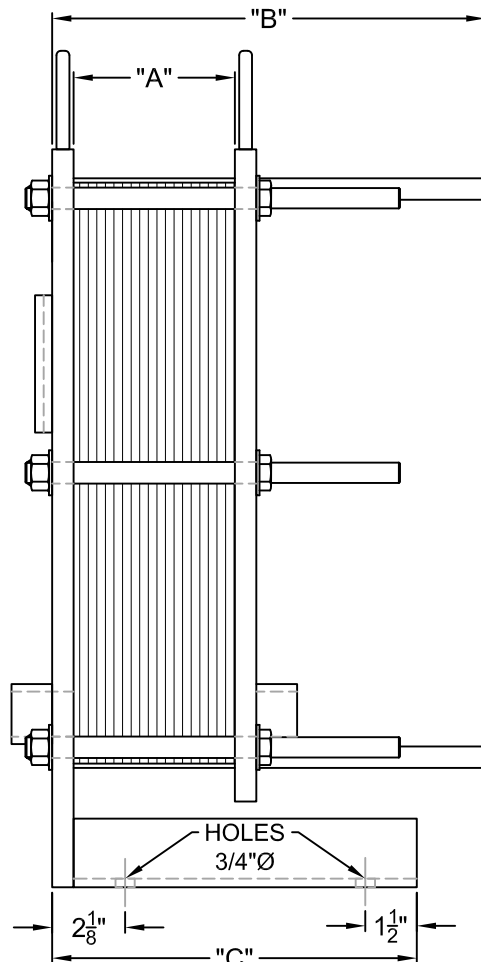


NOTE: DETAIL "A" SEE DATA SHEET  
 DETAIL "B" & "C" REFER TO AS BUILT  
 DRAWING (ON DEMAND)

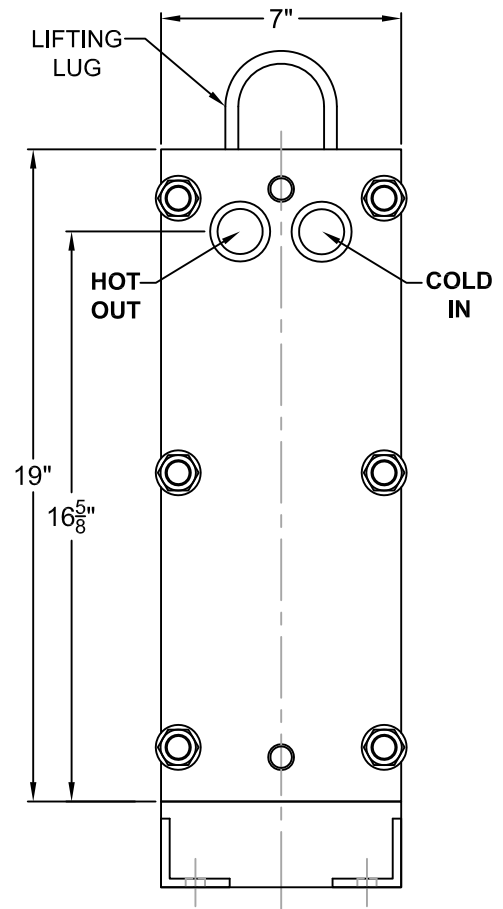
**SUBMITTAL SHEET**  
 ISSUE DATE: 2008/06/10  
 REVISION DATE: 2009/03/17  
 SECTION: 8



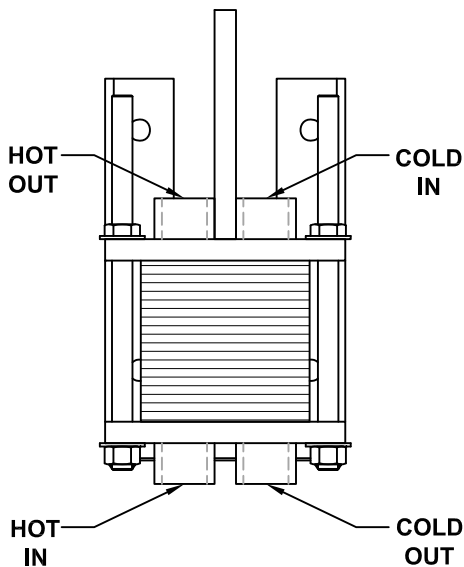
**FRONT VIEW**



**SIDE VIEW**



**REAR VIEW**



**TOP VIEW**

**STANDARD MATERIALS  
 OF CONSTRUCTION**

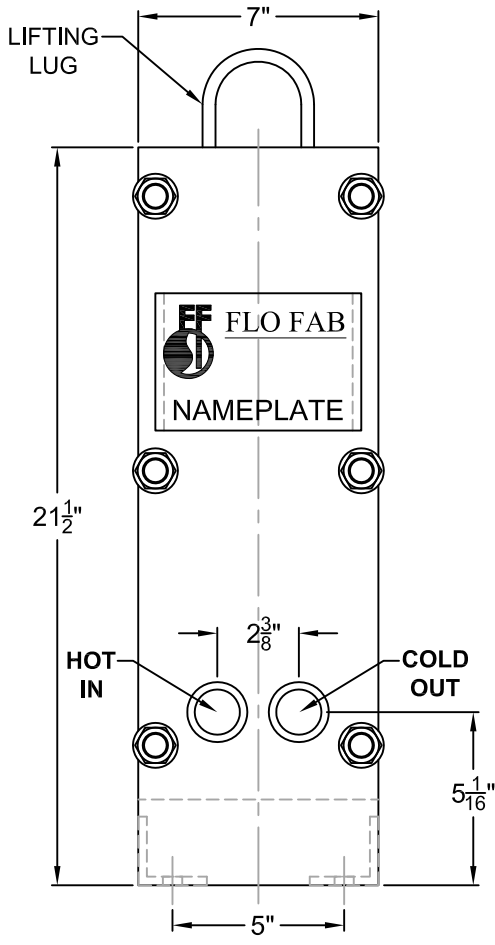
- CONNECTION.....1" HALF-COUPLING
- FIXED PLATES.....SA-515-70, SA-516-70, OR EQUIV.
- END FRAMES.....SA-515-70, SA-516-70, OR EQUIV.
- PLATE HANGER.....TYPE 304S/S
- COMPRESSION BOLTS (ZINC PLATED).....SA-193-B7
- COMPRESSION NUTS (ZINC PLATED).....SA-194-2H
- CONNECTION STUDS (ZINC PLATED).....SA-193-B7
- CONNECTION NUTS (ZINC PLATED).....SA-193-2H
- SHROUD (OPTIONAL).....ALUMINIUM
- PAINT.....CORROSION RESISTANT PAINT

TYPICAL DRAWING, FINALE DIMENSIONS AND DESIGN MAY VARY DESSIN TYPIQUE, LES DIMENSIONS FINALES ET LE DESIGN PEUVENT VARIER.			
TITLE / TITRE <b>PLATE HEAT EXCHANGERS (3 PASS)          MODEL FF84 (OPTION DOUBLE WALL AVAILABLE)</b>			
		PROJECT / PROJET	
860 BOULEVARD INDUSTRIEL BOIS-DES-FILION, QC J6Z 4V7, (450) 621-2995		CUSTOMER / CLIENT	
DRAWING BY / DESSINATEUR <b>M. LYMBURNER</b>		SCALE / ECHELLE N / A	DATE / DATE
PART LIST N° / LISTE DE MATERIEL N°		DATE / DATE	
DRAWING N° / N° DESSIN <b>FF84 (3 PASS)</b>		REV	0

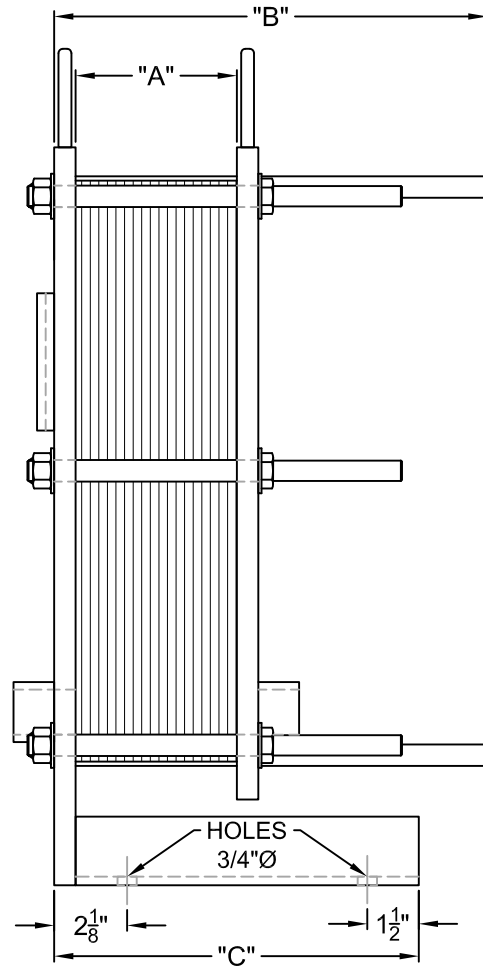
\*\*\*DIMENSIONS SUBJECT TO CHANGE WITHOUT NOTICE. DO NOT USE FOR CONSTRUCTION PURPOSES.  
 \*\*\*LES DIMENSIONS SONT SUJET AU CHANGEMENT SANS PRÉAVIS. NE PAS UTILISER POUR RÉFÉRENCE DE CONSTRUCTION.

NOTE: DETAIL "A" SEE DATA SHEET  
 DETAIL "B" & "C" REFER TO AS BUILT  
 DRAWING (ON DEMAND)

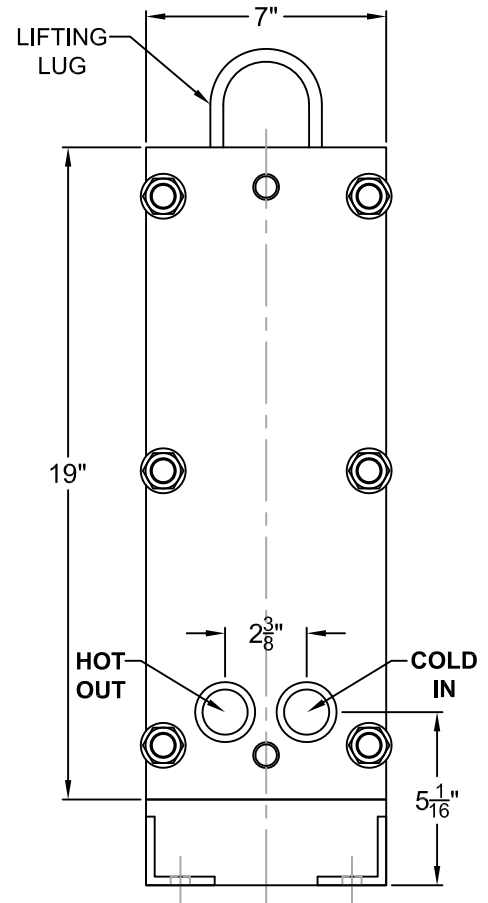
**SUBMITTAL SHEET**  
 ISSUE DATE: 2008/06/10  
 REVISION DATE: 2009/03/17  
 SECTION: 8



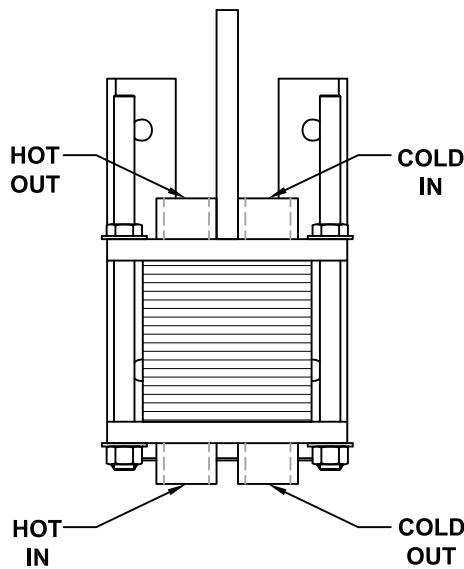
**FRONT VIEW**



**SIDE VIEW**



**REAR VIEW**



**TOP VIEW**

**STANDARD MATERIALS  
 OF CONSTRUCTION**

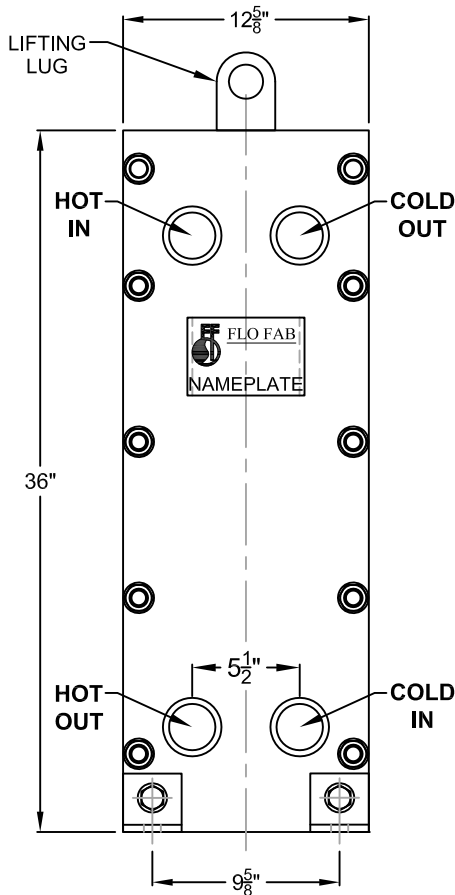
- CONNECTION.....1" HALF-COUPLING
- FIXED PLATES.....SA-515-70, SA-516-70, OR EQUIV.
- END FRAMES.....SA-515-70, SA-516-70, OR EQUIV.
- PLATE HANGER.....TYPE 304S/S
- COMPRESSION BOLTS (ZINC PLATED).....SA-193-B7
- COMPRESSION NUTS (ZINC PLATED).....SA-194-2H
- CONNECTION STUDS (ZINC PLATED).....SA-193-B7
- CONNECTION NUTS (ZINC PLATED).....SA-193-2H
- SHROUD (OPTIONAL).....ALUMINIUM PAINT
- PAIN.....CORROSION RESISTANT PAINT

TYPICAL DRAWING, FINALE DIMENSIONS AND DESIGN MAY VARY DESSIN TYPIQUE, LES DIMENSIONS FINALES ET LE DESIGN PEUVENT VARIER.			
TITLE / TITRE <b>PLATE HEAT EXCHANGERS (4 PASS)          MODEL FF84 (OPTION DOUBLE WALL AVAILABLE)</b>			
		PROJECT / PROJET	
860 BOULEVARD INDUSTRIEL BOIS-DES-FILION, QC J6Z 4V7, (450) 621-2995		CUSTOMER / CLIENT	
DRAWING BY / DESSINATEUR <b>M. LYMBURNER</b>		DATE / DATE	
SCALE / ECHELLE N / A		DRAWING N° / N° DESSIN FF84 (4 PASS)	
		REV 0	

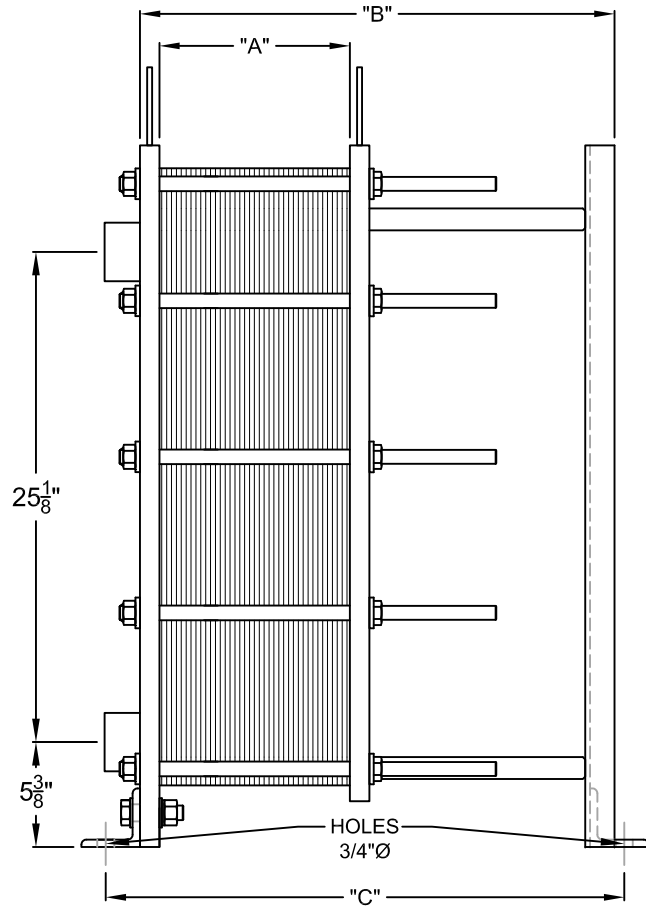
\*\*\*DIMENSIONS SUBJECT TO CHANGE WITHOUT NOTICE. DO NOT USE FOR CONSTRUCTION PURPOSES.  
 \*\*\*LES DIMENSIONS SONT SUJET AU CHANGEMENT SANS PRÉAVIS. NE PAS UTILISER POUR RÉFÉRENCE DE CONSTRUCTION.

NOTE: DETAIL "A" SEE DATA SHEET  
 DETAIL "B" & "C" REFER TO AS BUILT  
 DRAWING (ON DEMAND)

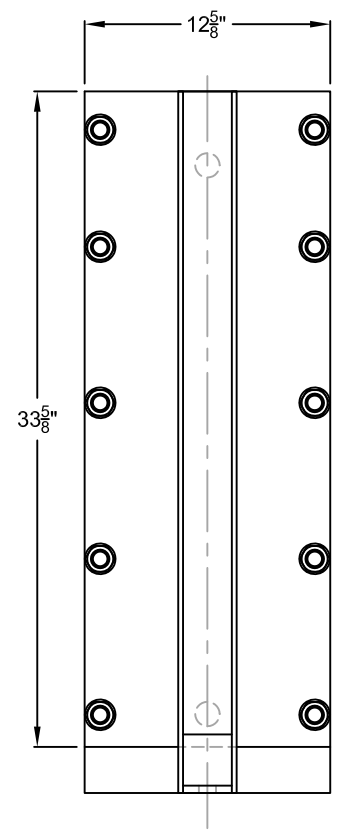
**SUBMITTAL SHEET**  
 ISSUE DATE: 2008/06/10  
 REVISION DATE: 2009/03/17  
 SECTION: 8



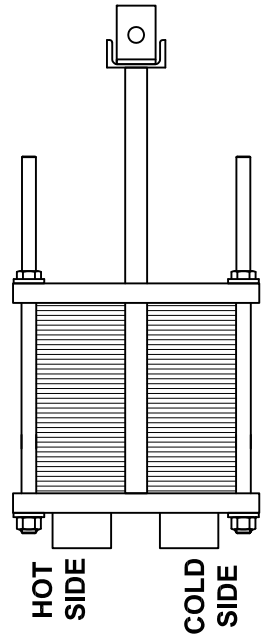
**FRONT VIEW**



**SIDE VIEW**



**REAR VIEW**



**TOP VIEW**

**STANDARD MATERIALS OF CONSTRUCTION**

- CONNECTION.....2" HALF-COUPLING
- FIXED PLATES.....SA-515-70, SA-516-70, OR EQUIV.
- END FRAMES.....SA-515-70, SA-516-70, OR EQUIV.
- PLATE HANGER.....TYPE 304S/S
- COMPRESSION BOLTS (ZINC PLATED).....SA-193-B7
- COMPRESSION NUTS (ZINC PLATED).....SA-194-2H
- CONNECTION STUDS (ZINC PLATED).....SA-193-B7
- CONNECTION NUTS (ZINC PLATED).....SA-193-2H
- SHROUD (OPTIONAL).....ALUMINIUM PAINT
- PAIN.....CORROSION RESISTANT PAINT

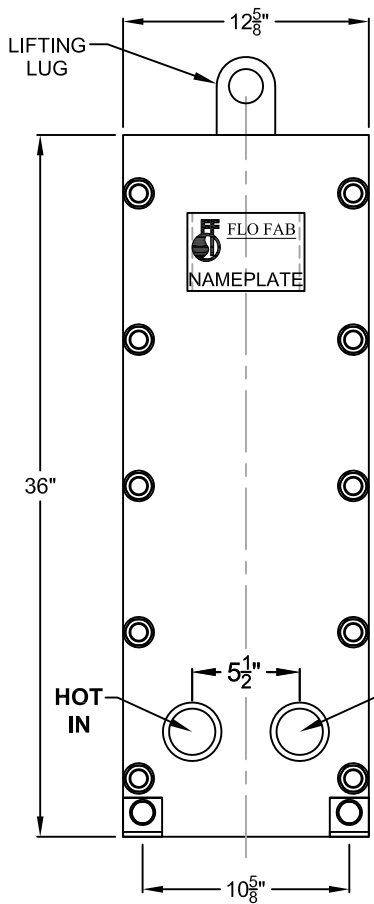
\*\*\*DIMENSIONS SUBJECT TO CHANGE WITHOUT NOTICE. DO NOT USE FOR CONSTRUCTION PURPOSES.  
 \*\*\*LES DIMENSIONS SONT SUJET AU CHANGEMENT SANS PRÉAVIS. NE PAS UTILISER POUR RÉFÉRENCE DE CONSTRUCTION.

TYPICAL DRAWING, FINALE DIMENSIONS AND DESIGN MAY VARY DESSIN TYPIQUE, LES DIMENSIONS FINALES ET LE DESIGN PEUVENT VARIER.			
TITLE / TITRE <b>PLATE HEAT EXCHANGERS (1 PASS)</b> <b>MODEL FF270B,M (OPTION DOUBLE WALL AVAILABLE)</b>			
 860 BOULEVARD INDUSTRIEL BOIS-DES-FILION, QC J6Z 4V7, (450) 621-2995	PROJECT / PROJET		DATE / DATE
	CUSTOMER / CLIENT		
DRAWN BY / DESSINATEUR <b>M. LYMBURNER</b>	SCALE / ECHELLE N / A	DRAWING N° / N° DESSIN FF270B,M (1 PASS)	REV 0

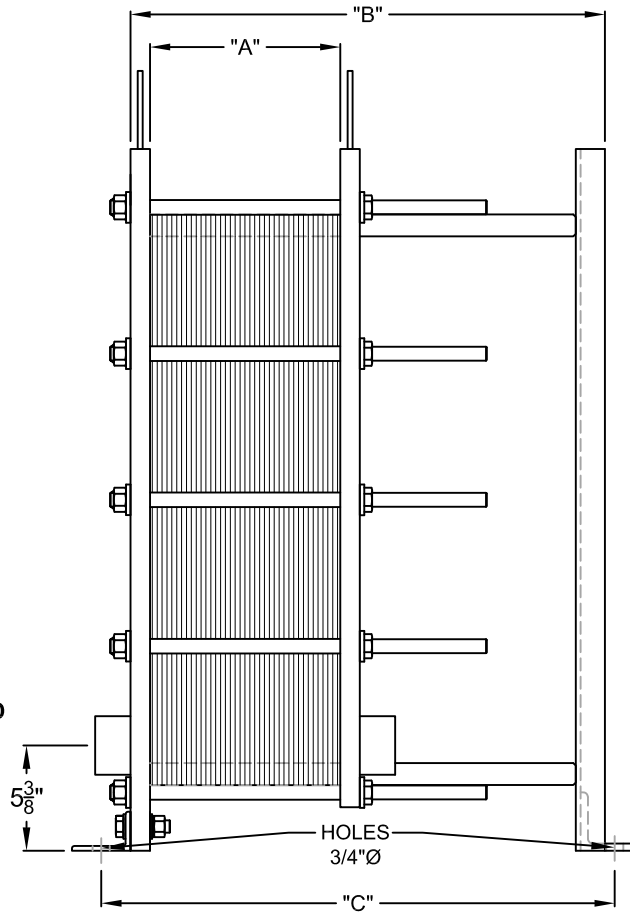


NOTE: DETAIL "A" SEE DATA SHEET  
 DETAIL "B" & "C" REFER TO AS BUILT  
 DRAWING (ON DEMAND)

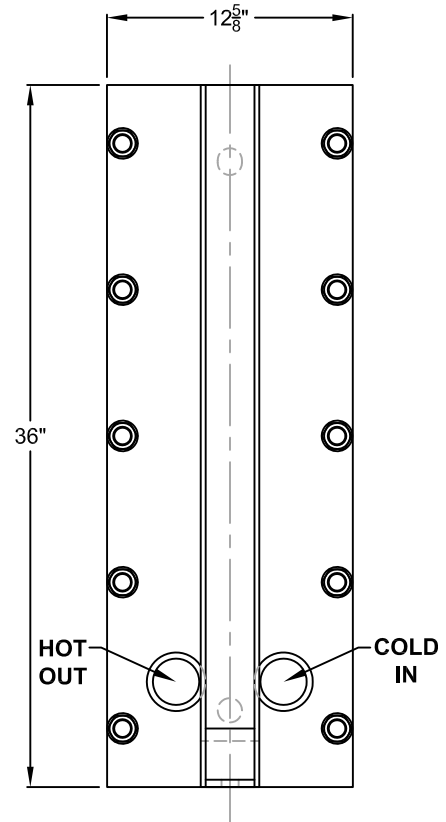
**SUBMITTAL SHEET**  
 ISSUE DATE: 2008/06/10  
 REVISION DATE: 2009/03/17  
 SECTION: 8



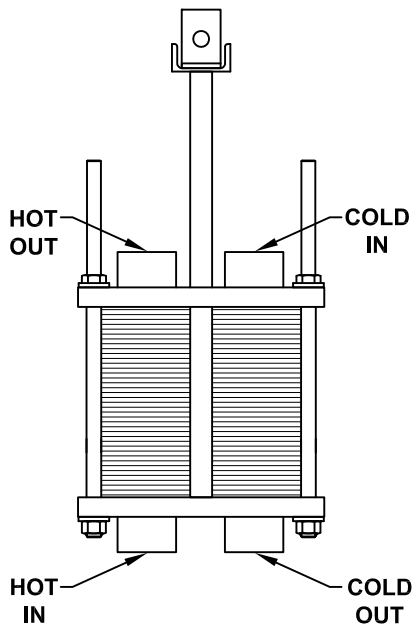
**FRONT VIEW**



**SIDE VIEW**



**REAR VIEW**



**TOP VIEW**

**STANDARD MATERIALS  
 OF CONSTRUCTION**

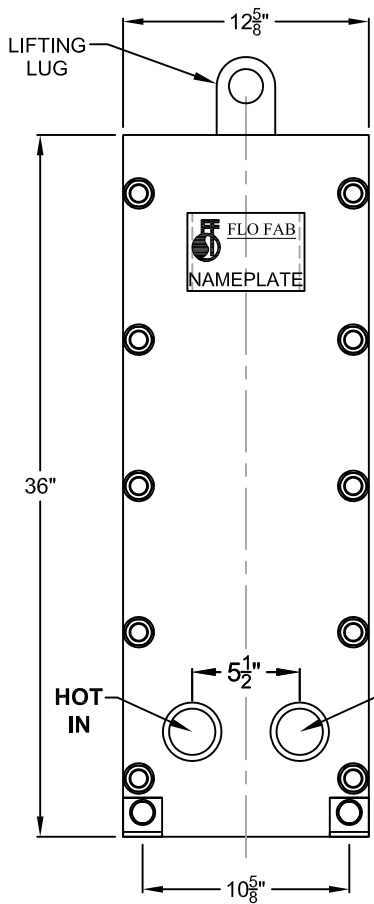
CONNECTION.....2" HALF-COUPLING  
 FIXED PLATES.....SA-515-70, SA-516-70, OR EQUIV.  
 END FRAMES.....SA-515-70, SA-516-70, OR EQUIV.  
 PLATE HANGER.....TYPE 304S/S  
 COMPRESSION BOLTS (ZINC PLATED).....SA-193-B7  
 COMPRESSION NUTS (ZINC PLATED).....SA-194-2H  
 CONNECTION STUDS (ZINC PLATED).....SA-193-B7  
 CONNECTION NUTS (ZINC PLATED).....SA-193-2H  
 SHROUD (OPTIONAL).....ALUMINIUM  
 PAINT.....CORROSION RESISTANT PAINT

TYPICAL DRAWING, FINALE DIMENSIONS AND DESIGN MAY VARY DESSIN TYPIQUE, LES DIMENSIONS FINALES ET LE DESIGN PEUVENT VARIER.			
TITLE / TITRE <b>PLATE HEAT EXCHANGERS (2 PASS)      MODEL FF270B,M (OPTION DOUBLE WALL AVAILABLE)</b>			
 860 BOULEVARD INDUSTRIEL BOIS-DES-FILION, QC J6Z 4V7, (450) 621-2995	PROJECT / PROJET		DATE / DATE
	CUSTOMER / CLIENT		
DRAWING BY / DESSINATEUR <b>M. LYMBURNER</b>	SCALE / ECHELLE <b>N / A</b>	DRAWING N° / N° DESSIN <b>FF270B,M (2 PASS)</b>	
			REV <b>0</b>

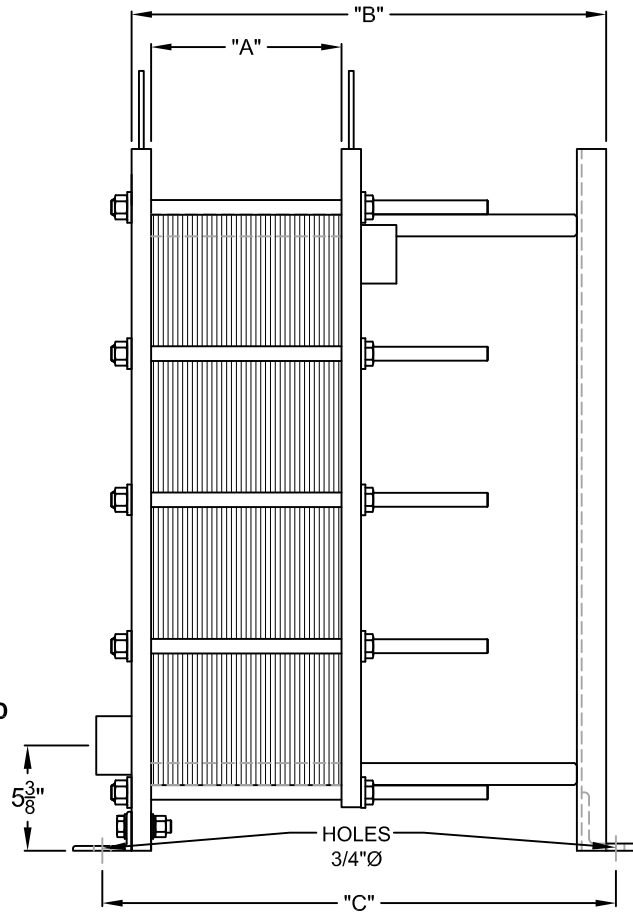
\*\*\*DIMENSIONS SUBJECT TO CHANGE WITHOUT NOTICE. DO NOT USE FOR CONSTRUCTION PURPOSES.  
 \*\*\*LES DIMENSIONS SONT SUJET AU CHANGEMENT SANS PRÉAVIS. NE PAS UTILISER POUR RÉFÉRENCE DE CONSTRUCTION.

NOTE: DETAIL "A" SEE DATA SHEET  
 DETAIL "B" & "C" REFER TO AS BUILT  
 DRAWING (ON DEMAND)

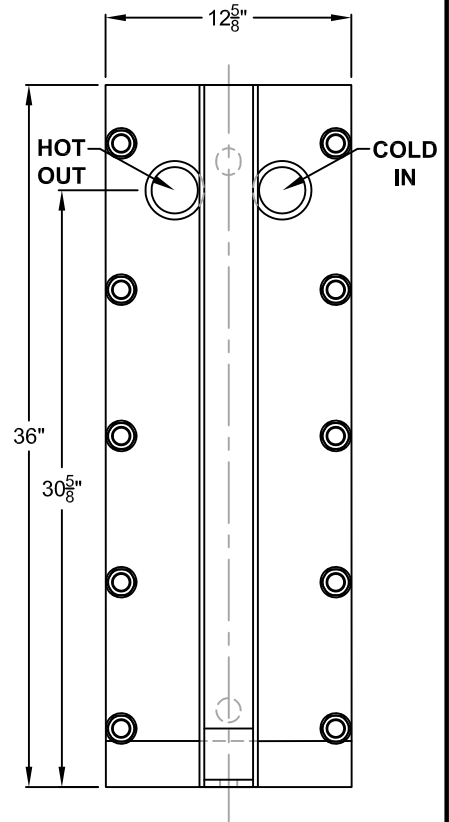
**SUBMITTAL SHEET**  
 ISSUE DATE: 2008/06/10  
 REVISION DATE: 2009/03/17  
 SECTION: 8



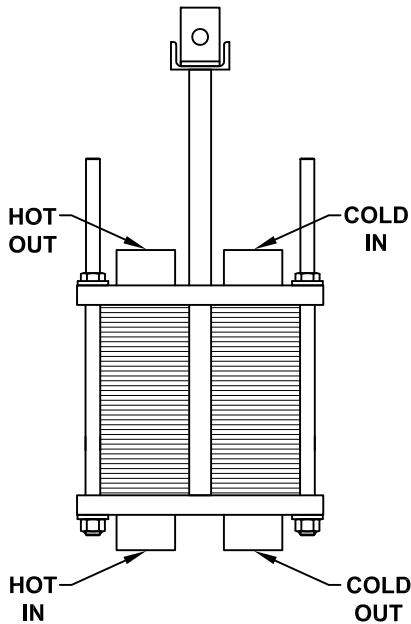
**FRONT VIEW**



**SIDE VIEW**




**REAR VIEW**



**TOP VIEW**

**STANDARD MATERIALS  
 OF CONSTRUCTION**

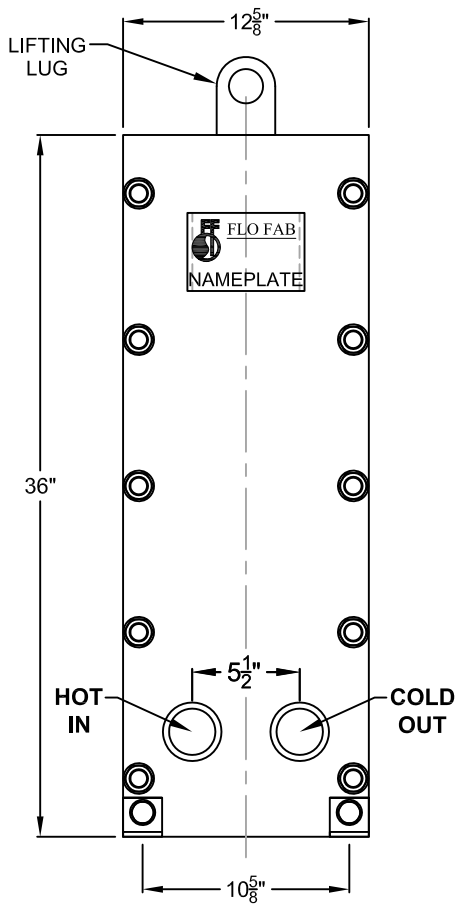
- CONNECTION.....2" HALF-COUPLING
- FIXED PLATES.....SA-515-70, SA-516-70, OR EQUIV.
- END FRAMES.....SA-515-70, SA-516-70, OR EQUIV.
- PLATE HANGER.....TYPE 304S/S
- COMPRESSION BOLTS (ZINC PLATED).....SA-193-B7
- COMPRESSION NUTS (ZINC PLATED).....SA-194-2H
- CONNECTION STUDS (ZINC PLATED).....SA-193-B7
- CONNECTION NUTS (ZINC PLATED).....SA-193-2H
- SHROUD (OPTIONAL).....ALUMINIUM PAINT
- PAIN.....CORROSION RESISTANT PAINT

TYPICAL DRAWING, FINALE DIMENSIONS AND DESIGN MAY VARY DESSIN TYPIQUE, LES DIMENSIONS FINALES ET LE DESIGN PEUVENT VARIER.			
TITLE / TITRE <b>PLATE HEAT EXCHANGERS (3 PASS)          MODEL FF270B,M (OPTION DOUBLE WALL AVAILABLE)</b>			
 860 BOULEVARD INDUSTRIEL BOIS-DES-FILION, QC J6Z 4V7, (450) 621-2995		PROJECT / PROJET	DATE / DATE
DRAWING BY / DESSINATEUR <b>M. LYMBURNER</b>		SCALE / ECHELLE N / A	REV 0

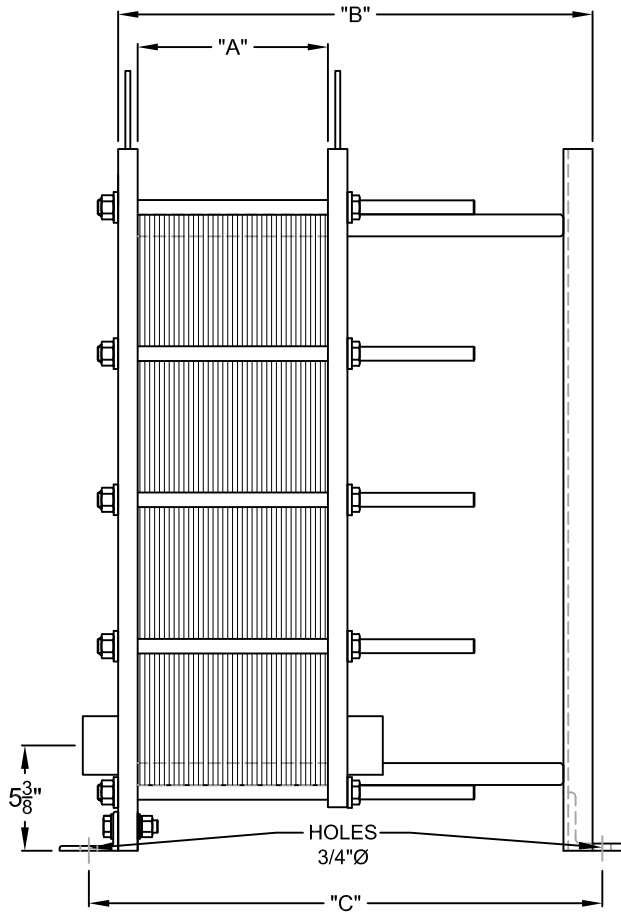
\*\*\*DIMENSIONS SUBJECT TO CHANGE WITHOUT NOTICE. DO NOT USE FOR CONSTRUCTION PURPOSES.  
 \*\*\*LES DIMENSIONS SONT SUJET AU CHANGEMENT SANS PRÉAVIS. NE PAS UTILISER POUR RÉFÉRENCE DE CONSTRUCTION.

NOTE: DETAIL "A" SEE DATA SHEET  
 DETAIL "B" & "C" REFER TO AS BUILT  
 DRAWING (ON DEMAND)

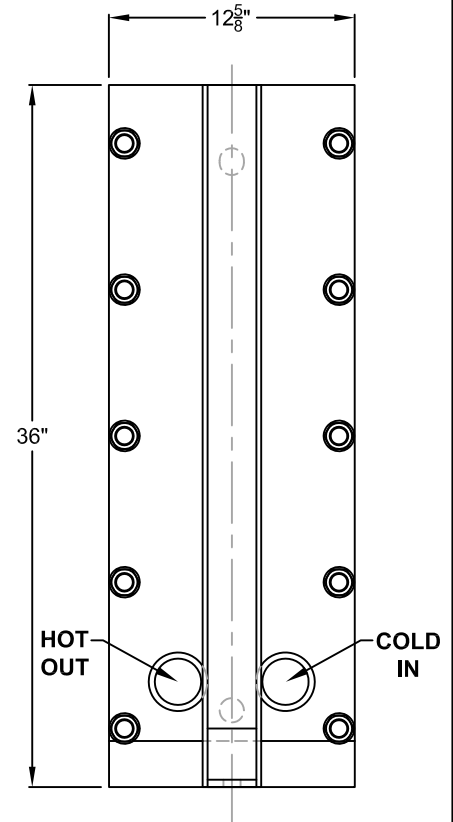
**SUBMITTAL SHEET**  
 ISSUE DATE: 2008/06/10  
 REVISION DATE: 2009/03/17  
 SECTION: 8



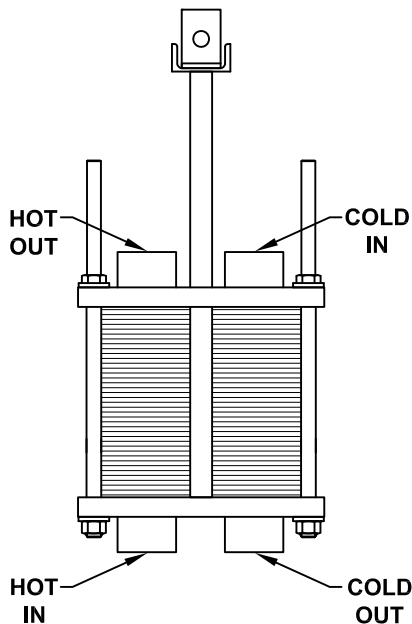
**FRONT VIEW**



**SIDE VIEW**



**REAR VIEW**



**TOP VIEW**

**STANDARD MATERIALS  
 OF CONSTRUCTION**

- CONNECTION.....2" HALF-COUPLING
- FIXED PLATES.....SA-515-70, SA-516-70, OR EQUIV.
- END FRAMES.....SA-515-70, SA-516-70, OR EQUIV.
- PLATE HANGER.....TYPE 304S/S
- COMPRESSION BOLTS (ZINC PLATED).....SA-193-B7
- COMPRESSION NUTS (ZINC PLATED).....SA-194-2H
- CONNECTION STUDS (ZINC PLATED).....SA-193-B7
- CONNECTION NUTS (ZINC PLATED).....SA-193-2H
- SHROUD (OPTIONAL).....ALUMINIUM PAINT
- PAIN.....CORROSION RESISTANT PAINT

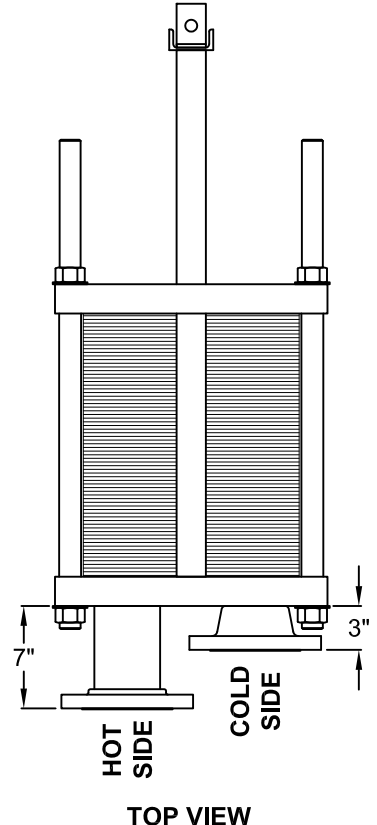
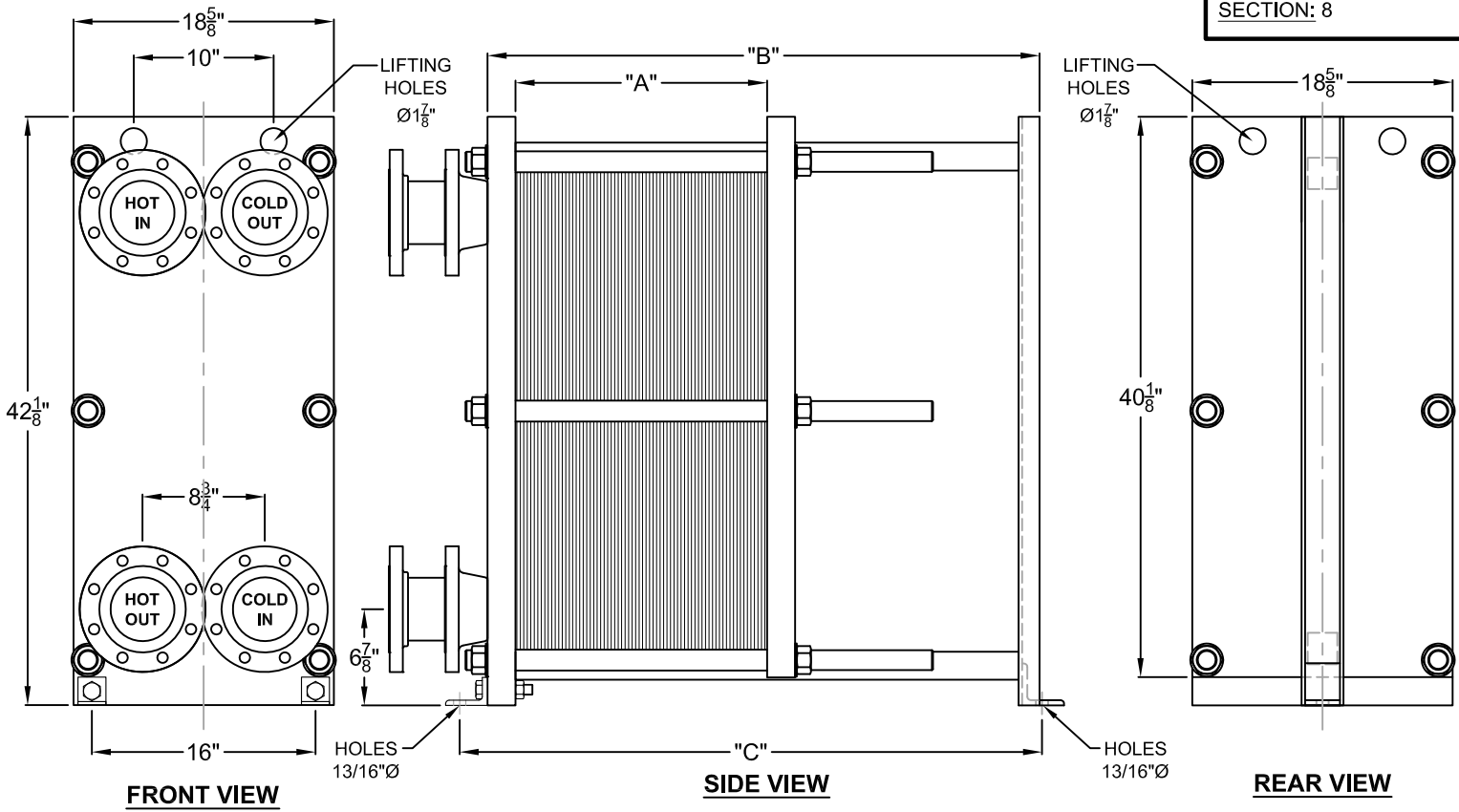
TYPICAL DRAWING, FINALE DIMENSIONS AND DESIGN MAY VARY DESSIN TYPIQUE, LES DIMENSIONS FINALES ET LE DESIGN PEUVENT VARIER.			
TITLE / TITRE <b>PLATE HEAT EXCHANGERS (4 PASS)      MODEL FF270B,M (OPTION DOUBLE WALL AVAILABLE)</b>			
		PROJECT / PROJET	
860 BOULEVARD INDUSTRIEL BOIS-DES-FILION, QC J6Z 4V7, (450) 621-2995		CUSTOMER / CLIENT	
DRAWING BY / DESSINATEUR <b>M. LYMBURNER</b>		SCALE / ECHELLE <b>N / A</b>	DATE / DATE
DRAWING N° / N° DESSIN <b>FF270B,M (4 PASS)</b>		REV <b>0</b>	

\*\*\*DIMENSIONS SUBJECT TO CHANGE WITHOUT NOTICE. DO NOT USE FOR CONSTRUCTION PURPOSES.  
 \*\*\*LES DIMENSIONS SONT SUJET AU CHANGEMENT SANS PRÉAVIS. NE PAS UTILISER POUR RÉFÉRENCE DE CONSTRUCTION.



NOTE: DETAIL "A" SEE DATA SHEET  
 DETAIL "B" & "C" REFER TO AS BUILT  
 DRAWING (ON DEMAND)

**SUBMITTAL SHEET**  
 ISSUE DATE: 2008/06/10  
 REVISION DATE: 2009/03/17  
 SECTION: 8



**STANDARD MATERIALS  
 OF CONSTRUCTION**

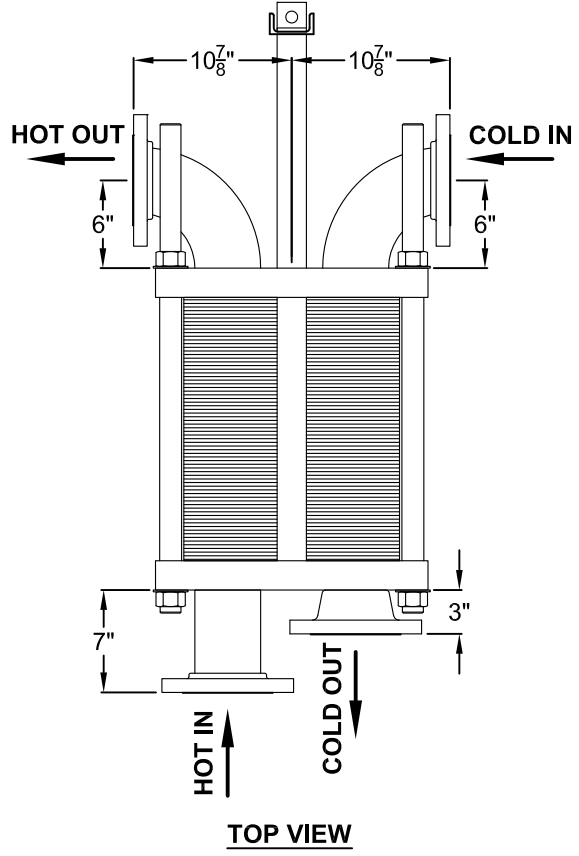
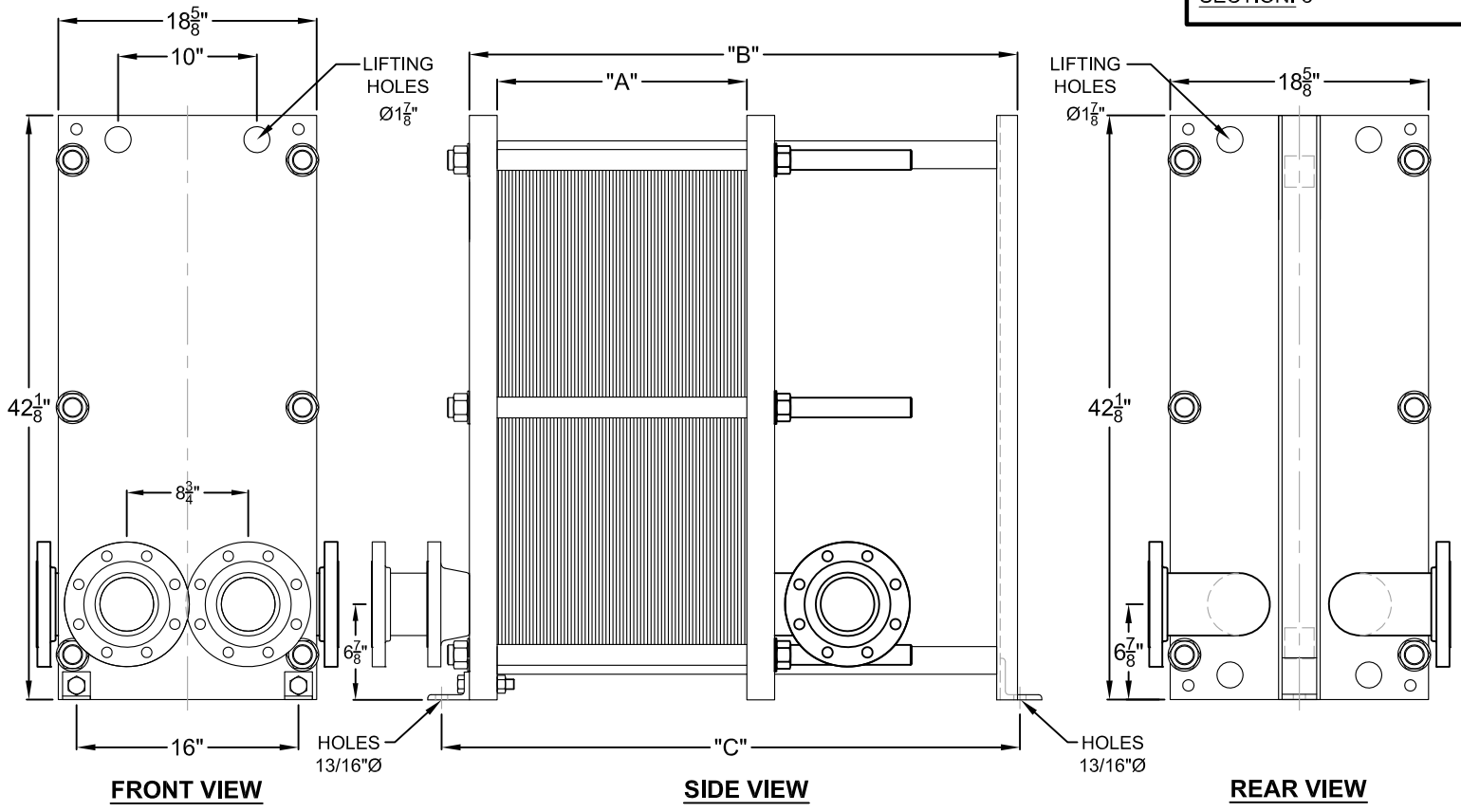
- CONNECTION.....4" FLANGE
- FIXED PLATES.....SA-515-70, SA-516-70, OR EQUIV.
- END FRAMES.....SA-515-70, SA-516-70, OR EQUIV.
- PLATE HANGER.....TYPE 304S/S
- COMPRESSION BOLTS (ZINC PLATED).....SA-193-B7
- COMPRESSION NUTS (ZINC PLATED).....SA-194-2H
- CONNECTION STUDS (ZINC PLATED).....SA-193-B7
- CONNECTION NUTS (ZINC PLATED).....SA-193-2H
- SHROUD (OPTIONAL).....ALUMINIUM
- PAINT.....CORROSION RESISTANT PAINT

\*\*\*DIMENSIONS SUBJECT TO CHANGE WITHOUT NOTICE. DO NOT USE FOR CONSTRUCTION PURPOSES.  
 \*\*\*LES DIMENSIONS SONT SUJET AU CHANGEMENT SANS PRÉAVIS. NE PAS UTILISER POUR RÉFÉRENCE DE CONSTRUCTION.

TYPICAL DRAWING, FINALE DIMENSIONS AND DESIGN MAY VARY DESSIN TYPIQUE, LES DIMENSIONS FINALES ET LE DESIGN PEUVENT VARIER.			
TITLE / TITRE <b>PLATE HEAT EXCHANGERS (1 PASS)          MODEL FF800B,M (OPTION DOUBLE WALL AVAILABLE)</b>			
 860 BOULEVARD INDUSTRIEL BOIS-DES-FILION, QC J6Z 4V7, (450) 621-2995	PROJECT / PROJET		
	CUSTOMER / CLIENT		
	PART LIST N° / LISTE DE MATERIEL N°	DATE / DATE	
DRAWN BY / DESSINATEUR M. LYMBURNER	SCALE / ECHELLE N / A	DRAWING N° / N° DESSIN FF800B.M	REV 0

NOTE: DETAIL "A" SEE DATA SHEET  
 DETAIL "B" & "C" REFER TO AS BUILT  
 DRAWING (ON DEMAND)

**SUBMITTAL SHEET**  
 ISSUE DATE: 2008/06/10  
 REVISION DATE: 2009/03/17  
 SECTION: 8



**STANDARD MATERIALS  
 OF CONSTRUCTION**

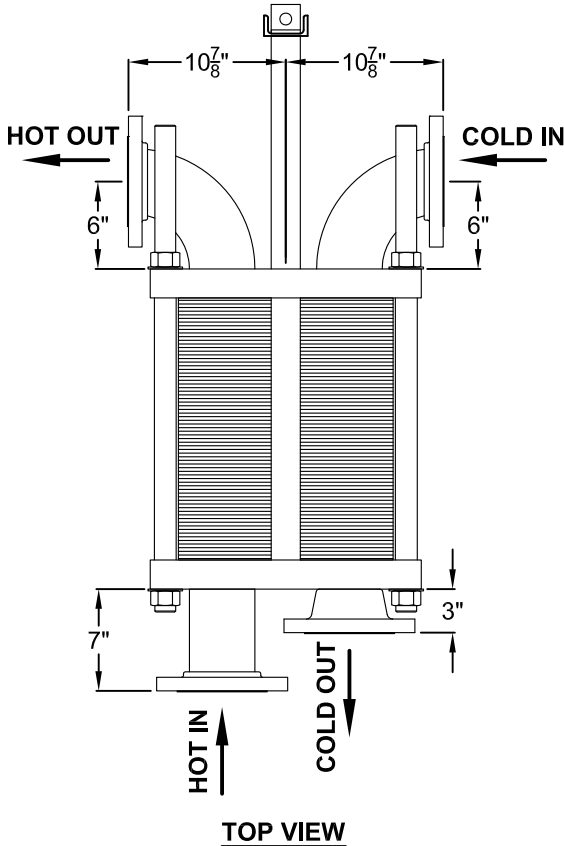
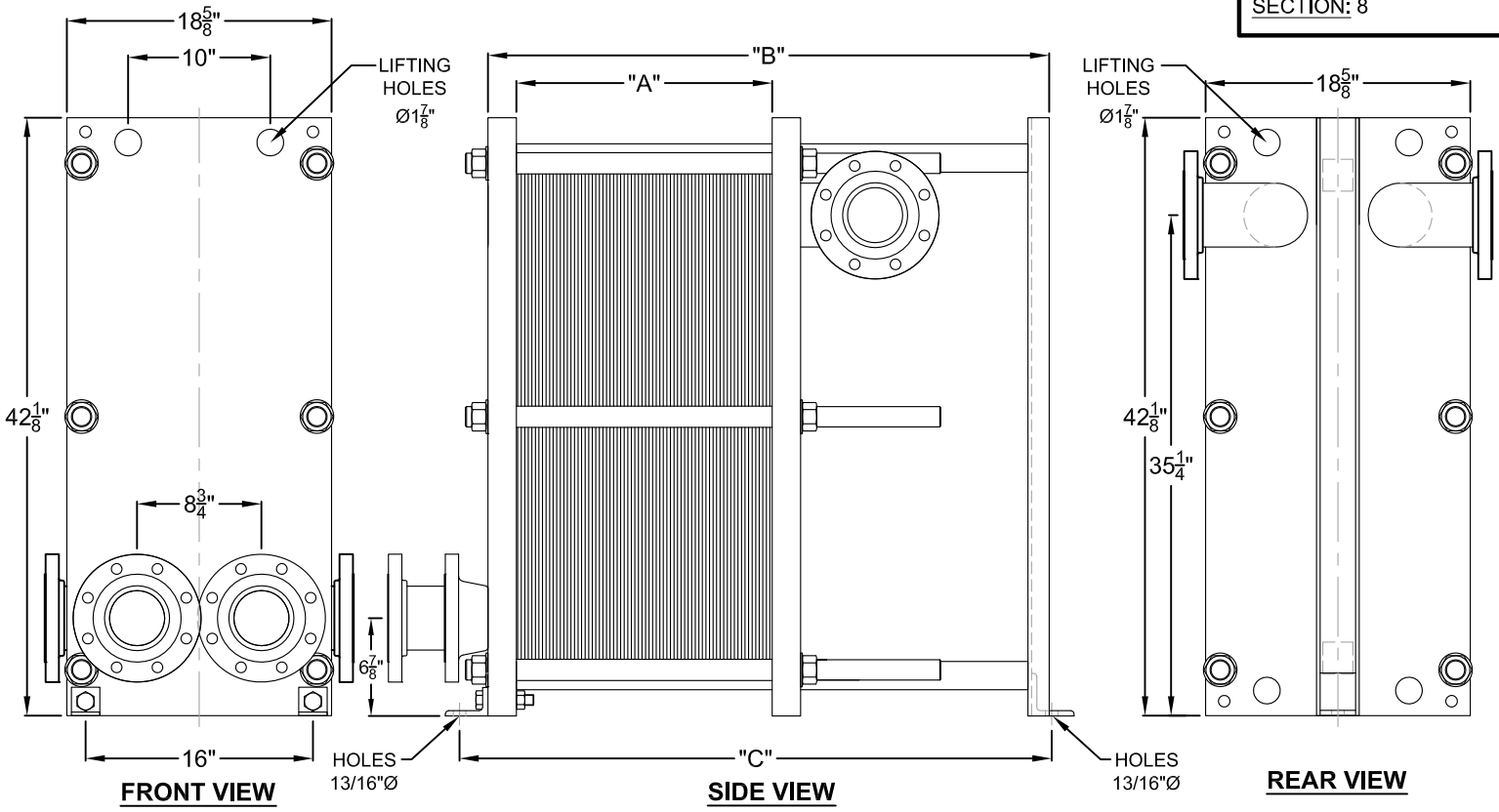
- CONNECTION.....4" FLANGE
- FIXED PLATES.....SA-515-70, SA-516-70, OR EQUIV.
- END FRAMES.....SA-515-70, SA-516-70, OR EQUIV.
- PLATE HANGER.....TYPE 304S/S
- COMPRESSION BOLTS (ZINC PLATED).....SA-193-B7
- COMPRESSION NUTS (ZINC PLATED).....SA-194-2H
- CONNECTION STUDS (ZINC PLATED).....SA-193-B7
- CONNECTION NUTS (ZINC PLATED).....SA-193-2H
- SHROUD (OPTIONAL).....ALUMINIUM
- PAINT.....CORROSION RESISTANT PAINT

TYPICAL DRAWING, FINALE DIMENSIONS AND DESIGN MAY VARY DESSIN TYPIQUE, LES DIMENSIONS FINALES ET LE DESIGN PEUVENT VARIER.			
TITLE / TITRE <b>PLATE HEAT EXCHANGERS (2 PASS)          MODEL FF800B,M (OPTION DOUBLE WALL AVAILABLE)</b>			
		PROJECT / PROJET	
860 BOULEVARD INDUSTRIEL BOIS-DES-FILION, QC J6Z 4V7, (450) 621-2995		CUSTOMER / CLIENT	
DRAWN BY / DESSINATEUR		PART LIST N° / LISTE DE MATERIEL N°	DATE / DATE
M. LYMBURNER		SCALE / ECHELLE N / A	DRAWING N° / N° DESSIN FF800B.M
			REV 0

\*\*\*DIMENSIONS SUBJECT TO CHANGE WITHOUT NOTICE. DO NOT USE FOR CONSTRUCTION PURPOSES.  
 \*\*\*LES DIMENSIONS SONT SUJET AU CHANGEMENT SANS PRÉAVIS. NE PAS UTILISER POUR RÉFÉRENCE DE CONSTRUCTION.

NOTE: DETAIL "A" SEE DATA SHEET  
 DETAIL "B" & "C" REFER TO AS BUILT  
 DRAWING (ON DEMAND)

**SUBMITTAL SHEET**  
 ISSUE DATE: 2008/06/10  
 REVISION DATE: 2009/03/17  
 SECTION: 8



**STANDARD MATERIALS  
 OF CONSTRUCTION**

CONNECTION.....4" FLANGE  
 FIXED PLATES.....SA-515-70, SA-516-70, OR EQUIV.  
 END FRAMES.....SA-515-70, SA-516-70, OR EQUIV.  
 PLATE HANGER.....TYPE 304S/S  
 COMPRESSION BOLTS (ZINC PLATED).....SA-193-B7  
 COMPRESSION NUTS (ZINC PLATED).....SA-194-2H  
 CONNECTION STUDS (ZINC PLATED).....SA-193-B7  
 CONNECTION NUTS (ZINC PLATED).....SA-193-2H  
 SHROUD (OPTIONAL).....ALUMINIUM  
 PAINT.....CORROSION RESISTANT PAINT

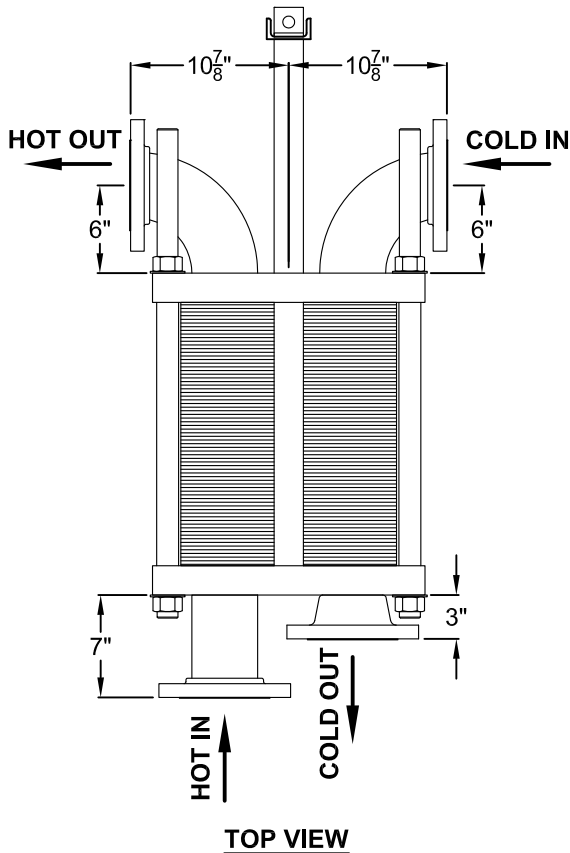
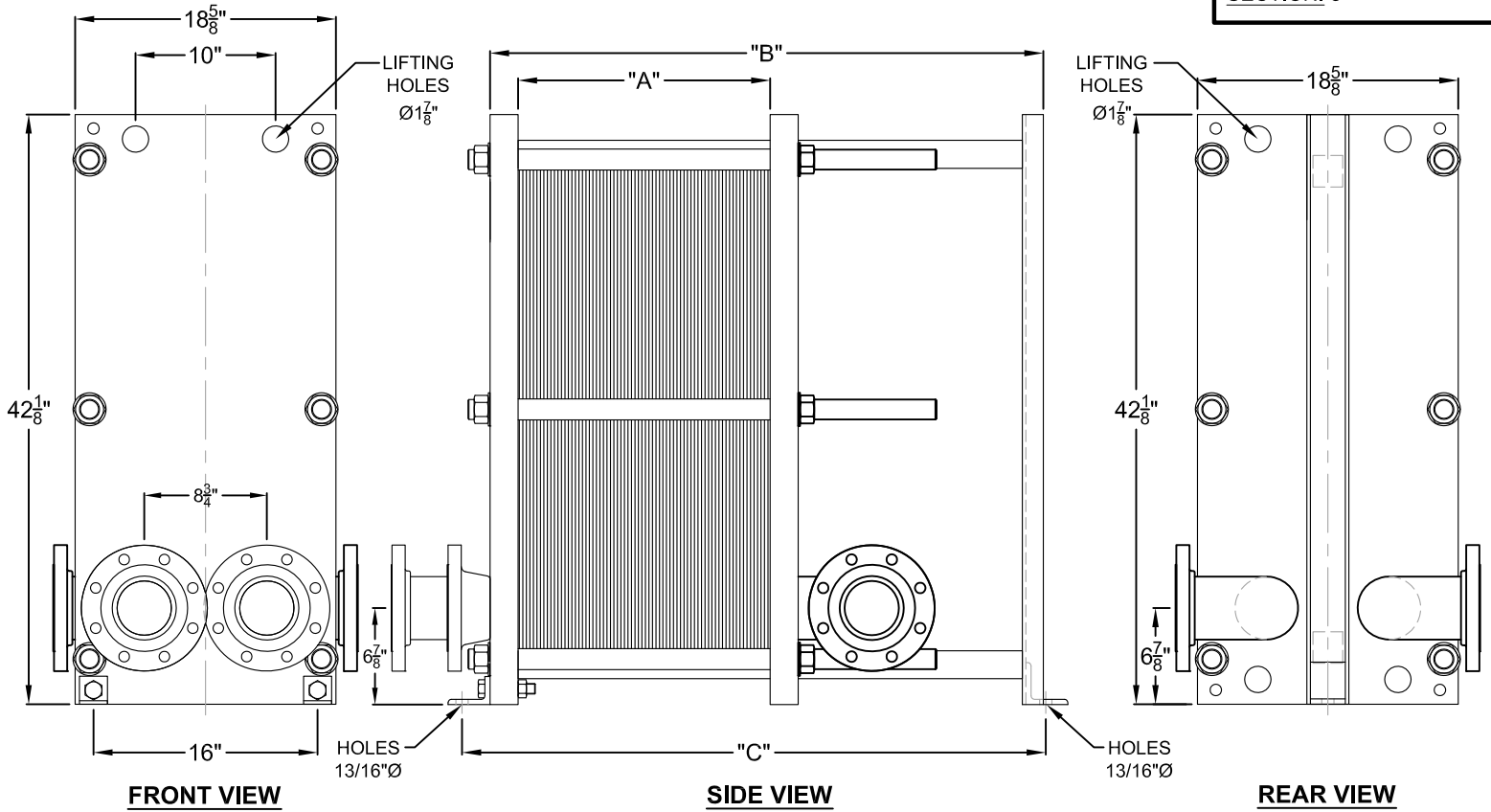
TYPICAL DRAWING, FINALE DIMENSIONS AND DESIGN MAY VARY DESSIN TYPIQUE, LES DIMENSIONS FINALES ET LE DESIGN PEUVENT VARIER.			
TITLE / TITRE PLATE HEAT EXCHANGERS (3 PASS) MODEL FF800B,M (OPTION DOUBLE WALL AVAILABLE)			
 860 BOULEVARD INDUSTRIEL BOIS-DES-FILION, QC J6Z 4V7, (450) 621-2995	PROJECT / PROJET		CUSTOMER / CLIENT
	PART LIST N° / LISTE DE MATERIEL N°		DATE / DATE
DRAWN BY / DESSINATEUR M. LYMBURNER	SCALE / ÉCHELLE N / A	DRAWING N° / N° DESSIN FF800B.M	
			REV 0

\*\*\*DIMENSIONS SUBJECT TO CHANGE WITHOUT NOTICE. DO NOT USE FOR CONSTRUCTION PURPOSES.  
 \*\*\*LES DIMENSIONS SONT SUJET AU CHANGEMENT SANS PRÉAVIS. NE PAS UTILISER POUR RÉFÉRENCE DE CONSTRUCTION.



NOTE: DETAIL "A" SEE DATA SHEET  
 DETAIL "B" & "C" REFER TO AS BUILT  
 DRAWING (ON DEMAND)

**SUBMITTAL SHEET**  
 ISSUE DATE: 2008/06/10  
 REVISION DATE: 2009/03/17  
 SECTION: 8



**STANDARD MATERIALS  
 OF CONSTRUCTION**

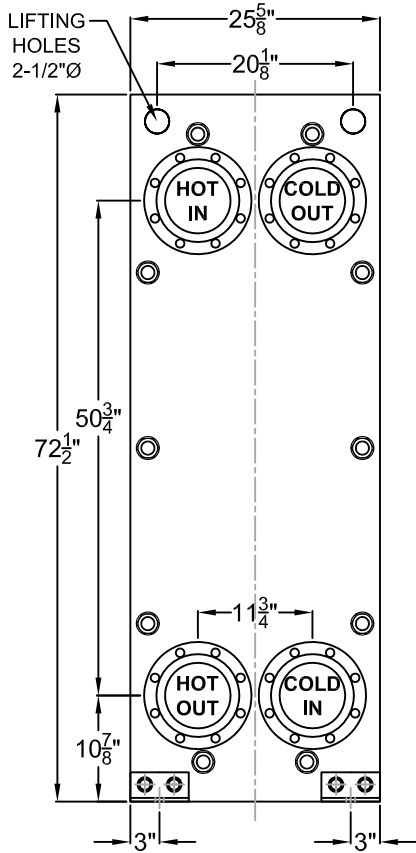
- CONNECTION.....4" FLANGE
- FIXED PLATES.....SA-515-70, SA-516-70, OR EQUIV.
- END FRAMES.....SA-515-70, SA-516-70, OR EQUIV.
- PLATE HANGER.....TYPE 304S/S
- COMPRESSION BOLTS (ZINC PLATED).....SA-193-B7
- COMPRESSION NUTS (ZINC PLATED).....SA-194-2H
- CONNECTION STUDS (ZINC PLATED).....SA-193-B7
- CONNECTION NUTS (ZINC PLATED).....SA-193-2H
- SHROUD (OPTIONAL).....ALUMINIUM
- PAINT.....CORROSION RESISTANT PAINT

TYPICAL DRAWING, FINALE DIMENSIONS AND DESIGN MAY VARY DESSIN TYPIQUE, LES DIMENSIONS FINALES ET LE DESIGN PEUVENT VARIER.			
TITLE / TITRE <b>PLATE HEAT EXCHANGERS (4 PASS)          MODEL FF800B,M (OPTION DOUBLE WALL AVAILABLE)</b>			
 860 BOULEVARD INDUSTRIEL BOIS-DES-FILION, QC J6Z 4V7, (450) 621-2995	PROJECT / PROJET		DATE / DATE
	CUSTOMER / CLIENT		
DRAWN BY / DESSINATEUR <b>M. LYMBURNER</b>	SCALE / ECHELLE <b>N / A</b>	DRAWING N° / N° DESSIN <b>FF800B.M</b>	REV <b>0</b>

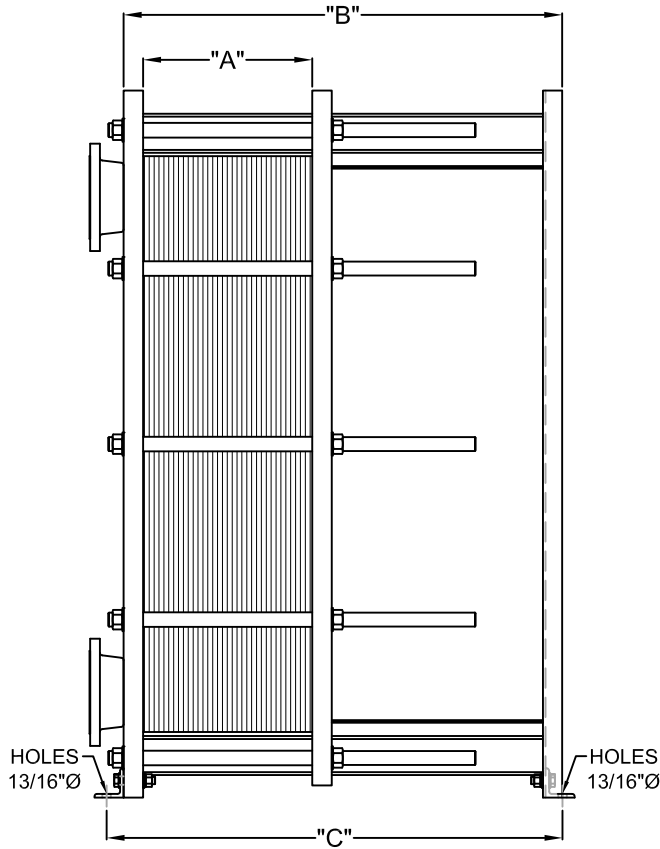
\*\*\*DIMENSIONS SUBJECT TO CHANGE WITHOUT NOTICE. DO NOT USE FOR CONSTRUCTION PURPOSES.  
 \*\*\*LES DIMENSIONS SONT SUJET AU CHANGEMENT SANS PRÉAVIS. NE PAS UTILISER POUR RÉFÉRENCE DE CONSTRUCTION.

NOTE: DETAIL "A" SEE DATA SHEET  
 DETAIL "B" & "C" REFER TO AS BUILT  
 DRAWING (ON DEMAND)

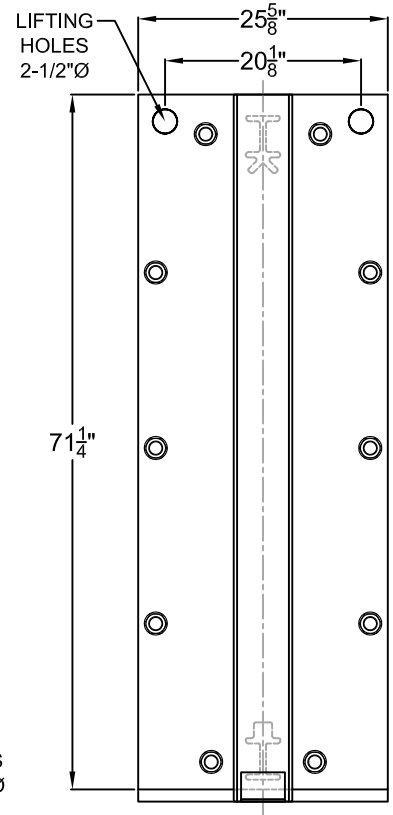
**SUBMITTAL SHEET**  
 ISSUE DATE: 2008/06/10  
 REVISION DATE: 2009/03/17  
 SECTION: 8



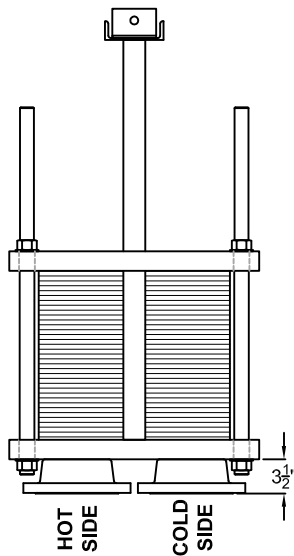
**FRONT VIEW**



**SIDE VIEW**



**REAR VIEW**



**TOP VIEW**

**STANDARD MATERIALS  
 OF CONSTRUCTION**

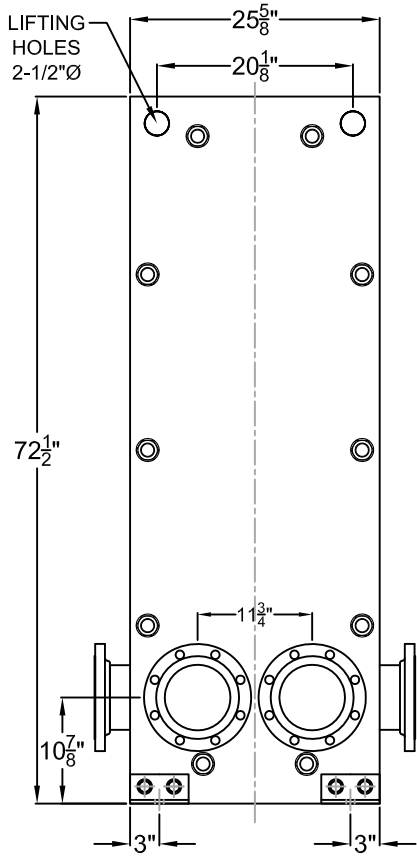
CONNECTION.....6" FLANGE  
 FIXED PLATES.....SA-515-70, SA-516-70, OR EQUIV.  
 END FRAMES.....SA-515-70, SA-516-70, OR EQUIV.  
 PLATE HANGER.....TYPE 304S/S  
 COMPRESSION BOLTS (ZINC PLATED).....SA-193-B7  
 COMPRESSION NUTS (ZINC PLATED).....SA-194-2H  
 CONNECTION STUDS (ZINC PLATED).....SA-193-B7  
 CONNECTION NUTS (ZINC PLATED).....SA-193-2H  
 SHROUD (OPTIONAL).....ALUMINIUM  
 PAINT.....CORROSION RESISTANT PAINT

TYPICAL DRAWING, FINALE DIMENSIONS AND DESIGN MAY VARY DESSIN TYPIQUE, LES DIMENSIONS FINALES ET LE DESIGN PEUVENT VARIER.			
TITLE / TITRE <b>PLATE HEAT EXCHANGERS (1 PASS)</b> <b>MODEL FF1625B,M (OPTION DOUBLE WALL AVAILABLE)</b>			
		PROJECT / PROJET	
860 BOULEVARD INDUSTRIEL BOIS-DES-FILION, QC J6Z 4V7, (450) 621-2995		CUSTOMER / CLIENT	
DRAWING BY / DESSINATEUR <b>M. LYMBURNER</b>		PART LIST N° / LISTE DE MATERIEL N°	DATE / DATE
SCALE / ECHELLE <b>N / A</b>	DRAWING N° / N° DESSIN <b>FF1625B,M (1 PASS)</b>	REV	<b>0</b>

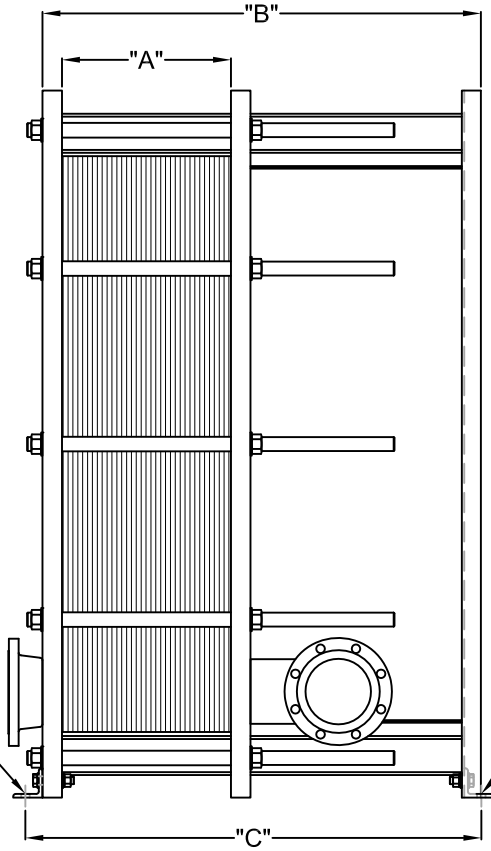
\*\*\*DIMENSIONS SUBJECT TO CHANGE WITHOUT NOTICE. DO NOT USE FOR CONSTRUCTION PURPOSES.  
 \*\*\*LES DIMENSIONS SONT SUJET AU CHANGEMENT SANS PRÉAVIS. NE PAS UTILISER POUR RÉFÉRENCE DE CONSTRUCTION.

NOTE: DETAIL "A" SEE DATA SHEET  
 DETAIL "B" & "C" REFER TO AS BUILT  
 DRAWING (ON DEMAND)

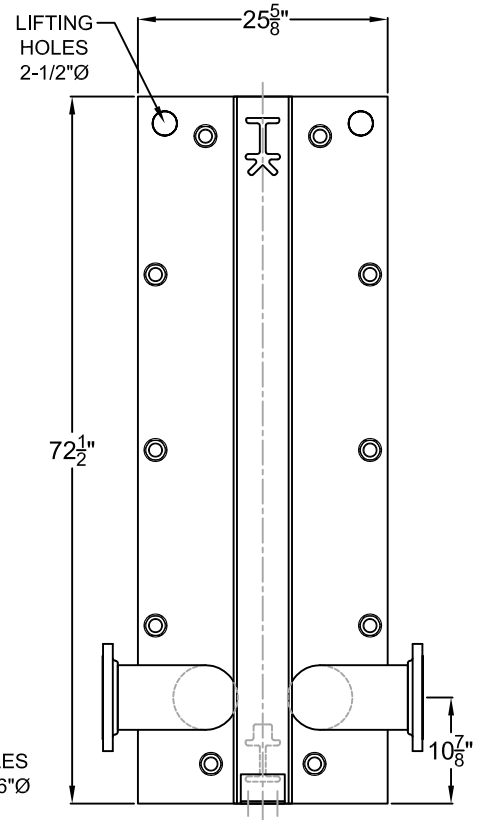
**SUBMITTAL SHEET**  
 ISSUE DATE: 2008/06/10  
 REVISION DATE: 2009/03/17  
 SECTION: 8



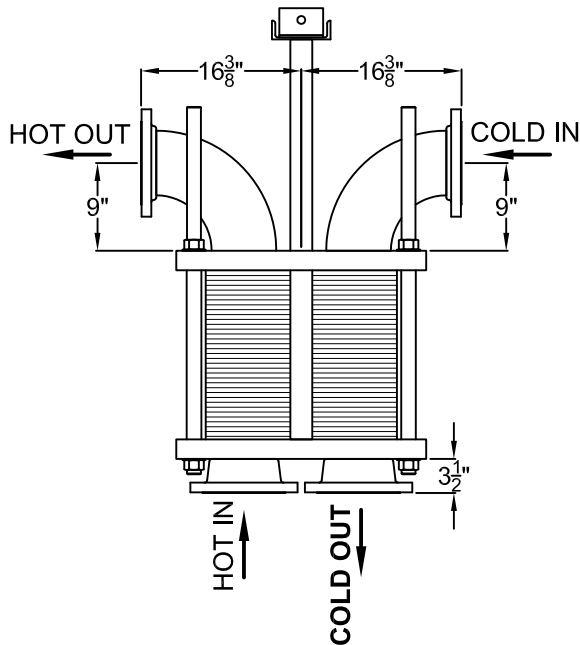
**FRONT VIEW**



**SIDE VIEW**



**REAR VIEW**



**TOP VIEW**

**STANDARD MATERIALS  
 OF CONSTRUCTION**

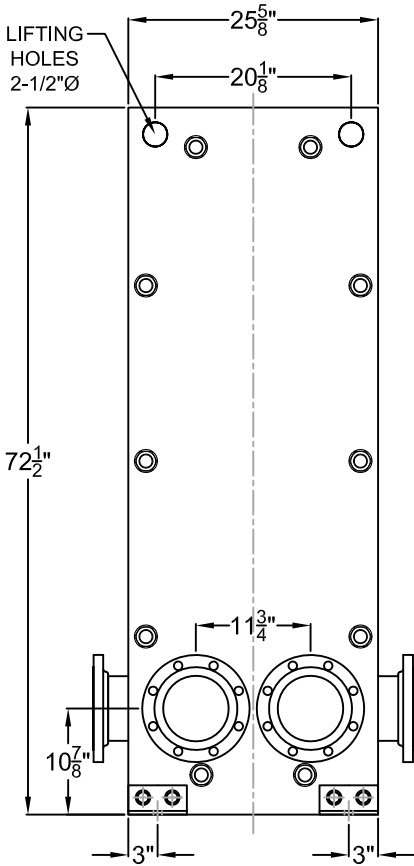
- CONNECTION.....6" FLANGE
- FIXED PLATES.....SA-515-70, SA-516-70, OR EQUIV.
- END FRAMES.....SA-515-70, SA-516-70, OR EQUIV.
- PLATE HANGER.....TYPE 304S/S
- COMPRESSION BOLTS (ZINC PLATED).....SA-193-B7
- COMPRESSION NUTS (ZINC PLATED).....SA-194-2H
- CONNECTION STUDS (ZINC PLATED).....SA-193-B7
- CONNECTION NUTS (ZINC PLATED).....SA-193-2H
- SHROUD (OPTIONAL).....ALUMINIUM
- PAINT.....CORROSION RESISTANT PAINT

TYPICAL DRAWING, FINALE DIMENSIONS AND DESIGN MAY VARY DESSIN TYPIQUE, LES DIMENSION FINALES ET LE DESIGN PEUVENT VARIER.			
TITLE / TITRE <b>PLATE HEAT EXCHANGERS (2 PASS)</b> <b>MODEL FF1625B,M (OPTION DOUBLE WALL AVAILABLE)</b>			
<b>FF FLO FAB</b> <b>AQUA PROFAB</b> <small>860 BOULEVARD INDUSTRIEL              BOIS-DES-FILION, QC              J6Z 4V7, (450) 621-2995</small>	PROJECT / PROJET		DATE / DATE
	CUSTOMER / CLIENT		
DRAWN BY / DESSINATEUR <b>M. LYMBURNER</b>	SCALE / ECHELLE <b>N / A</b>	DRAWING N° / N° DESSIN <b>FF1625B,M (2 PASS)</b>	
			REV <b>0</b>

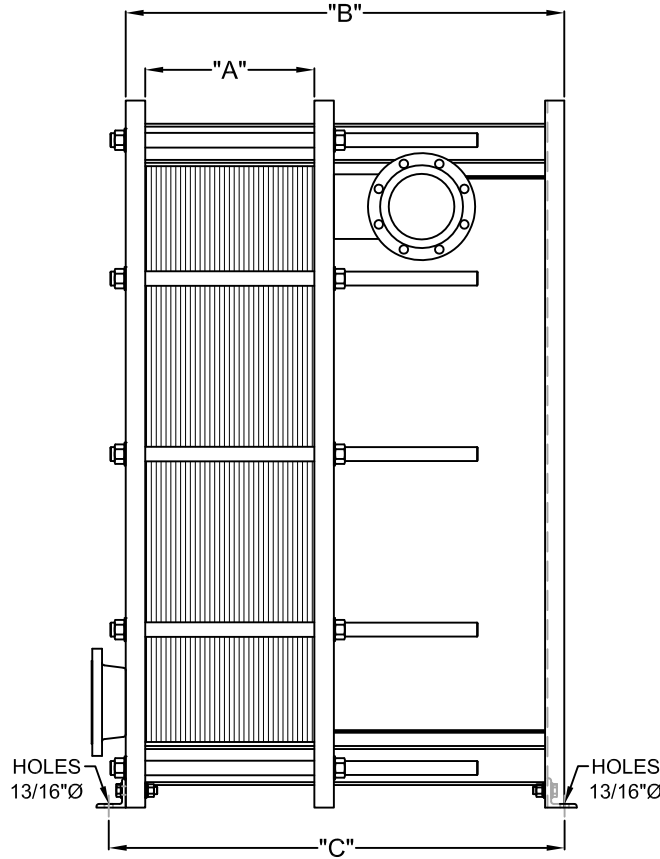
\*\*\*DIMENSIONS SUBJECT TO CHANGE WITHOUT NOTICE. DO NOT USE FOR CONSTRUCTION PURPOSES.  
 \*\*\*LES DIMENSIONS SONT SUJET AU CHANGEMENT SANS PRÉAVIS. NE PAS UTILISER POUR RÉFÉRENCE DE CONSTRUCTION.

NOTE: DETAIL "A" SEE DATA SHEET  
 DETAIL "B" & "C" REFER TO AS BUILT  
 DRAWING (ON DEMAND)

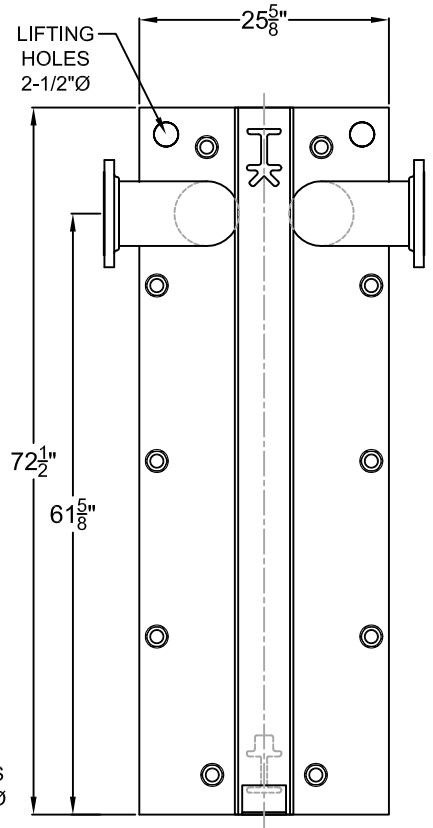
**SUBMITTAL SHEET**  
 ISSUE DATE: 2008/06/10  
 REVISION DATE: 2009/03/17  
 SECTION: 8



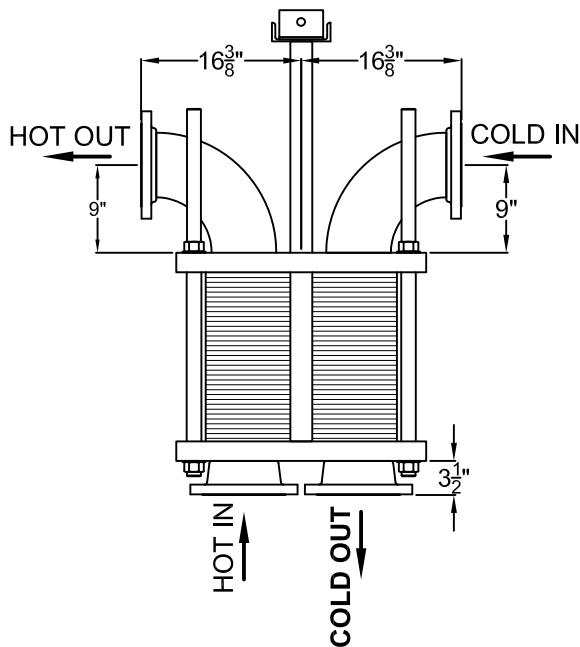
**FRONT VIEW**



**SIDE VIEW**



**REAR VIEW**



**TOP VIEW**

**STANDARD MATERIALS  
 OF CONSTRUCTION**

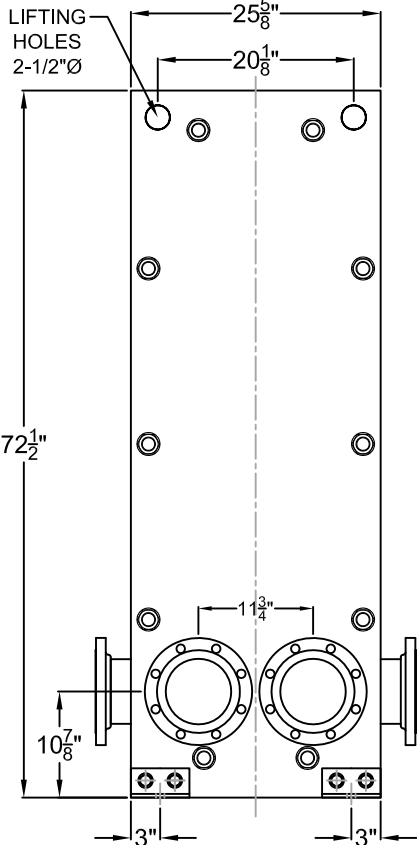
- CONNECTION.....6" FLANGE
- FIXED PLATES.....SA-515-70, SA-516-70, OR EQUIV.
- END FRAMES.....SA-515-70, SA-516-70, OR EQUIV.
- PLATE HANGER.....TYPE 304S/S
- COMPRESSION BOLTS (ZINC PLATED).....SA-193-B7
- COMPRESSION NUTS (ZINC PLATED).....SA-194-2H
- CONNECTION STUDS (ZINC PLATED).....SA-193-B7
- CONNECTION NUTS (ZINC PLATED).....SA-193-2H
- SHROUD (OPTIONAL).....ALUMINIUM
- PAINT.....CORROSION RESISTANT PAINT

TYPICAL DRAWING, FINALE DIMENSIONS AND DESIGN MAY VARY DESSIN TYPIQUE, LES DIMENSIONS FINALES ET LE DESIGN PEUVENT VARIER.			
TITLE / TITRE <b>PLATE HEAT EXCHANGERS (3 PASS)</b> <b>MODEL FF1625B,M (OPTION DOUBLE WALL AVAILABLE)</b>			
 860 BOULEVARD INDUSTRIEL BOIS-DES-FILION, QC J6Z 4V7, (450) 621-2995		PROJECT / PROJET	
		CUSTOMER / CLIENT	
		PART LIST N° / LISTE DE MATERIEL N°	DATE / DATE
DRAWN BY / DESSINATEUR	SCALE / ECHELLE	DRAWING N° / N° DESSIN	
M. LYMBURNER	N / A	FF1625B,M (3 PASS)	
		REV	0

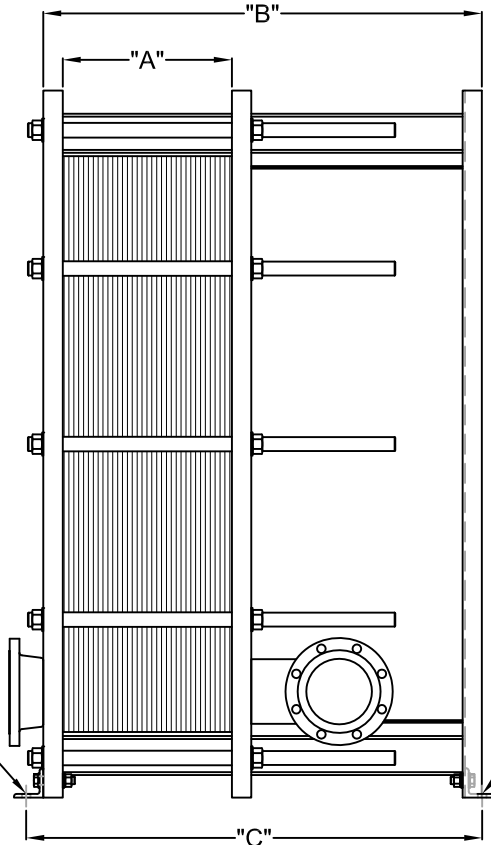
\*\*\*DIMENSIONS SUBJECT TO CHANGE WITHOUT NOTICE. DO NOT USE FOR CONSTRUCTION PURPOSES.  
 \*\*\*LES DIMENSIONS SONT SUJET AU CHANGEMENT SANS PRÉAVIS. NE PAS UTILISER POUR RÉFÉRENCE DE CONSTRUCTION.

NOTE: DETAIL "A" SEE DATA SHEET  
 DETAIL "B" & "C" REFER TO AS BUILT  
 DRAWING (ON DEMAND)

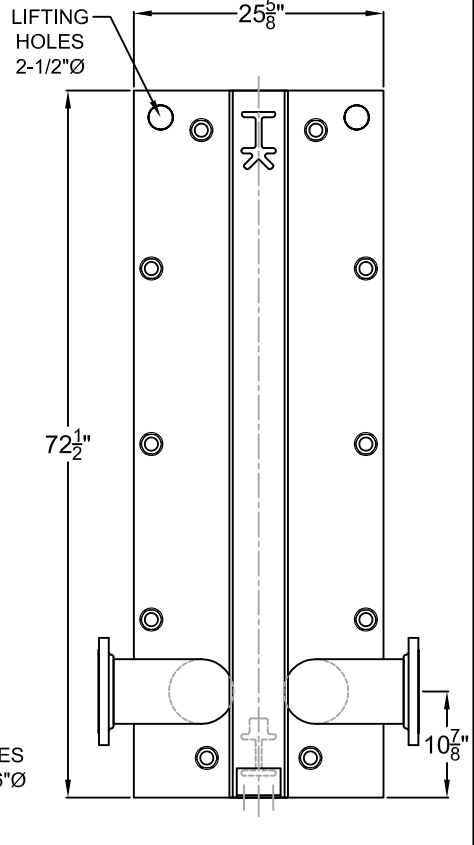
**SUBMITTAL SHEET**  
 ISSUE DATE: 2008/06/10  
 REVISION DATE: 2009/03/17  
 SECTION: 8



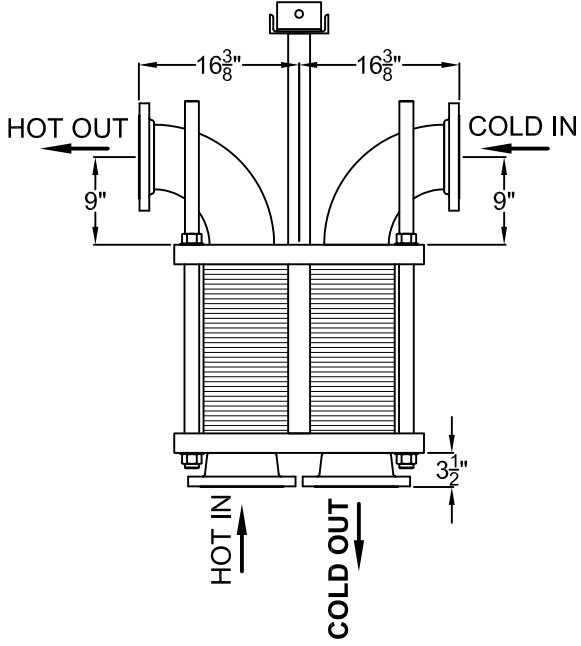
**FRONT VIEW**



**SIDE VIEW**



**REAR VIEW**



**TOP VIEW**

**STANDARD MATERIALS OF CONSTRUCTION**

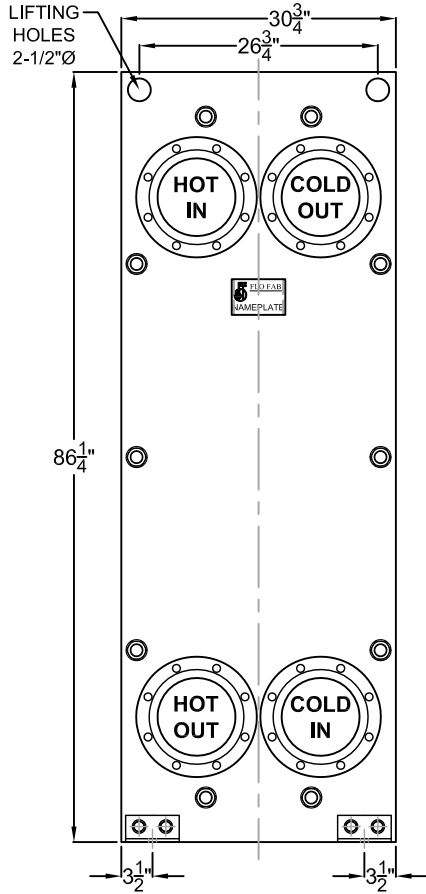
- CONNECTION.....6" FLANGE
- FIXED PLATES.....SA-515-70, SA-516-70, OR EQUIV.
- END FRAMES.....SA-515-70, SA-516-70, OR EQUIV.
- PLATE HANGER.....TYPE 304S/S
- COMPRESSION BOLTS (ZINC PLATED).....SA-193-B7
- COMPRESSION NUTS (ZINC PLATED).....SA-194-2H
- CONNECTION STUDS (ZINC PLATED).....SA-193-B7
- CONNECTION NUTS (ZINC PLATED).....SA-193-2H
- SHROUD (OPTIONAL).....ALUMINIUM
- PAINT.....CORROSION RESISTANT PAINT

TYPICAL DRAWING, FINALE DIMENSIONS AND DESIGN MAY VARY DESSIN TYPIQUE, LES DIMENSIONS FINALES ET LE DESIGN PEUVENT VARIER.			
TITLE / TITRE <b>PLATE HEAT EXCHANGERS (4 PASS)</b> <b>MODEL FF1625B,M (OPTION DOUBLE WALL AVAILABLE)</b>			
<b>FF FLO FAB</b> <b>AQUA PROFAB</b> <small>860 BOULEVARD INDUSTRIEL        BOIS-DES-FILION, QC        J6Z 4V7, (450) 621-2995</small>	PROJECT / PROJET		DATE / DATE
	CUSTOMER / CLIENT		
DRAWN BY / DESSINATEUR <b>M. LYMBURNER</b>	SCALE / ECHELLE <b>N / A</b>	DRAWING N° / N° DESSIN <b>FF1625B,M (4 PASS)</b>	
			REV <b>0</b>

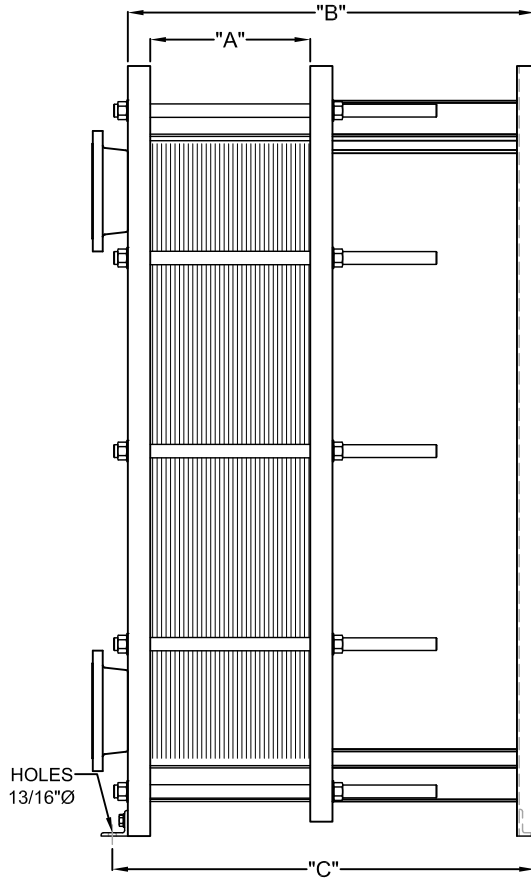
\*\*\*DIMENSIONS SUBJECT TO CHANGE WITHOUT NOTICE. DO NOT USE FOR CONSTRUCTION PURPOSES.  
 \*\*\*LES DIMENSIONS SONT SUJET AU CHANGEMENT SANS PRÉAVIS. NE PAS UTILISER POUR RÉFÉRENCE DE CONSTRUCTION.

NOTE: DETAIL "A" SEE DATA SHEET  
 DETAIL "B" & "C" REFER TO AS BUILT  
 DRAWING (ON DEMAND)

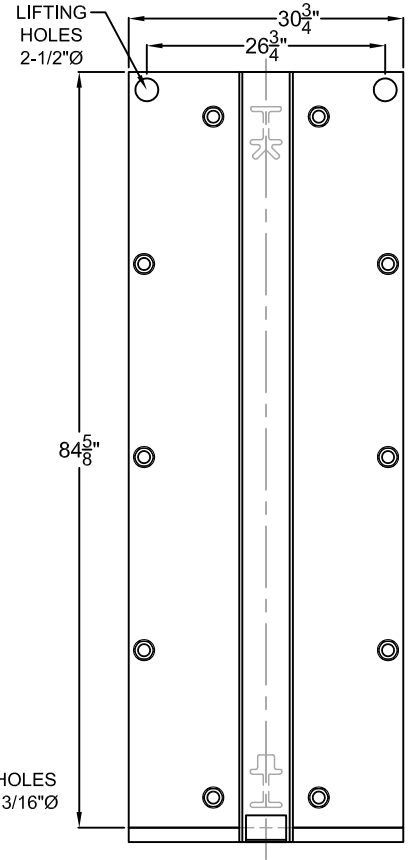
**SUBMITTAL SHEET**  
 ISSUE DATE: 2008/06/10  
 REVISION DATE: 2009/03/18  
 SECTION: 8



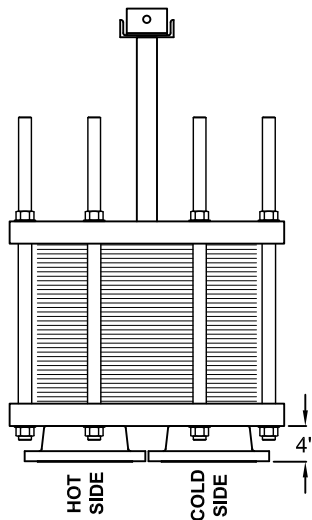
**FRONT VIEW**



**SIDE VIEW**



**REAR VIEW**



**TOP VIEW**

**STANDARD MATERIALS  
 OF CONSTRUCTION**

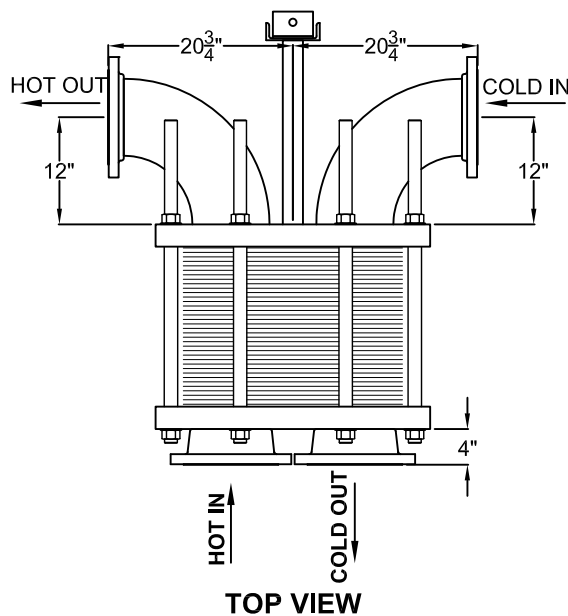
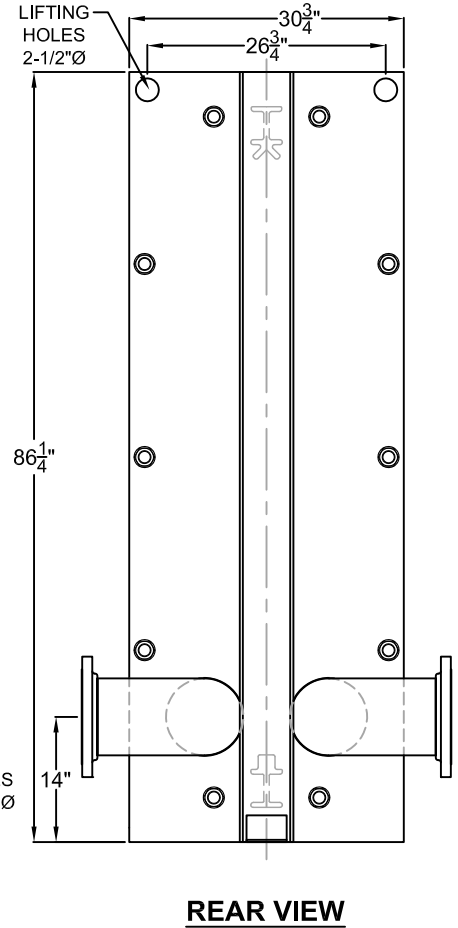
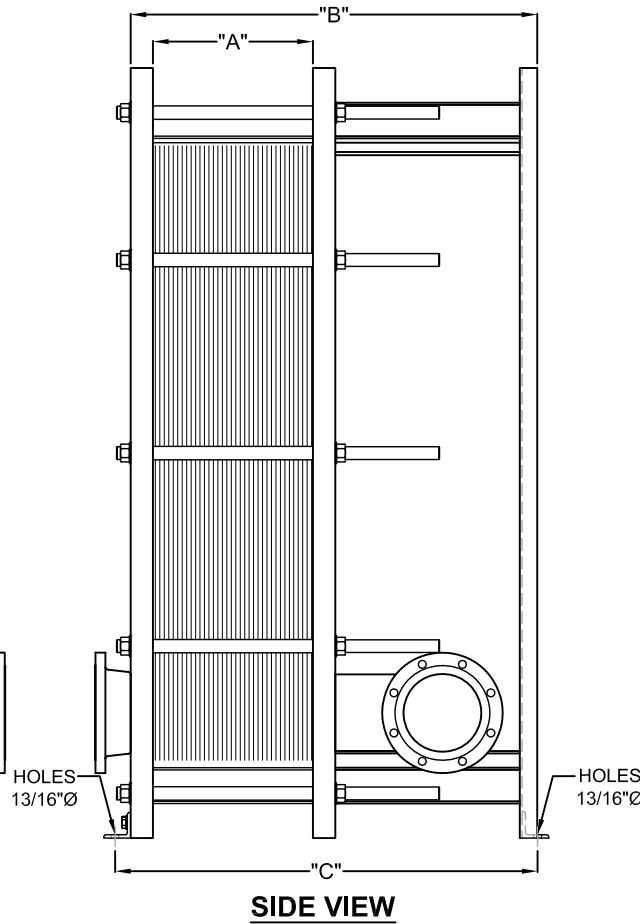
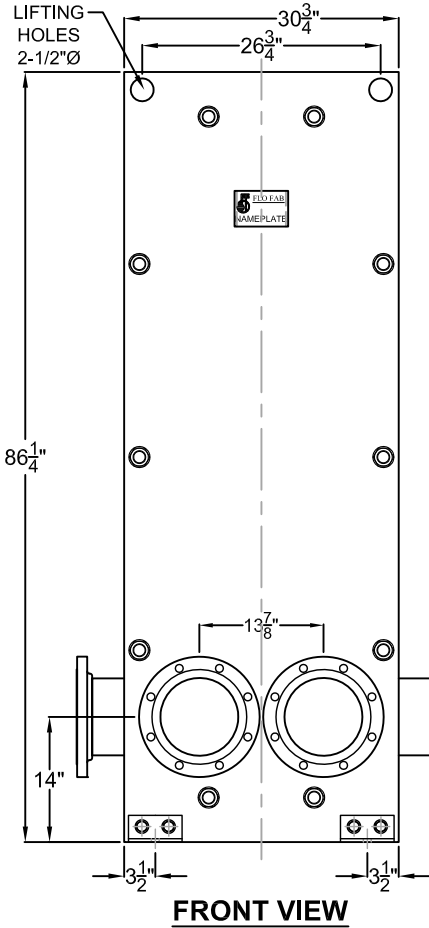
- CONNECTION.....8" FLANGE
- FIXED PLATES.....SA-515-70, SA-516-70, OR EQUIV.
- END FRAMES.....SA-515-70, SA-516-70, OR EQUIV.
- PLATE HANGER.....TYPE 304S/S
- COMPRESSION BOLTS (ZINC PLATED).....SA-193-B7
- COMPRESSION NUTS (ZINC PLATED).....SA-194-2H
- CONNECTION STUDS (ZINC PLATED).....SA-193-B7
- CONNECTION NUTS (ZINC PLATED).....SA-193-2H
- SHROUD (OPTIONAL).....ALUMINIUM
- PAINT.....CORROSION RESISTANT PAINT

TYPICAL DRAWING, FINALE DIMENSIONS AND DESIGN MAY VARY DESSIN TYPIQUE, LES DIMENSIONS FINALES ET LE DESIGN PEUVENT VARIER.			
TITLE / TITRE <b>PLATE HEAT EXCHANGERS (1 PASS)</b> <b>MODEL FF2900B,M (OPTION DOUBLE WALL AVAILABLE)</b>			
		PROJECT / PROJET	
860 BOULEVARD INDUSTRIEL BOIS-DES-FILION, QC J6Z 4V7, (450) 621-2995		CUSTOMER / CLIENT	
DRAWING BY / DESSINATEUR <b>M. LYMBURNER</b>		PART LIST N° / LISTE DE MATERIEL N°	DATE / DATE
SCALE / ECHELLE N / A		DRAWING N° / N° DESSIN FF2900B,M (1 PASS)	REV 0

\*\*\*DIMENSIONS SUBJECT TO CHANGE WITHOUT NOTICE. DO NOT USE FOR CONSTRUCTION PURPOSES.  
 \*\*\*LES DIMENSIONS SONT SUJET AU CHANGEMENT SANS PRÉAVIS. NE PAS UTILISER POUR RÉFÉRENCE DE CONSTRUCTION.

NOTE: DETAIL "A" SEE DATA SHEET  
 DETAIL "B" & "C" REFER TO AS BUILT  
 DRAWING (ON DEMAND)

**SUBMITTAL SHEET**  
 ISSUE DATE: 2008/06/10  
 REVISION DATE: 2009/03/18  
 SECTION: 8



**STANDARD MATERIALS  
 OF CONSTRUCTION**

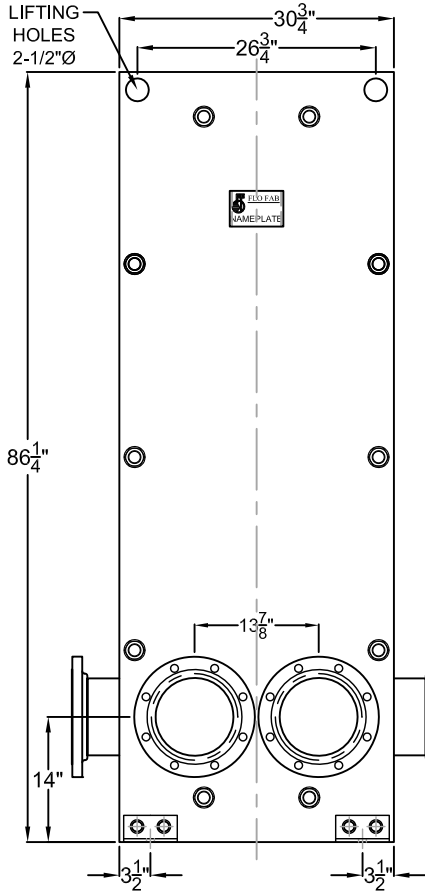
- CONNECTION.....8" FLANGE
- FIXED PLATES.....SA-515-70, SA-516-70, OR EQUIV.
- END FRAMES.....SA-515-70, SA-516-70, OR EQUIV.
- PLATE HANGER.....TYPE 304S/S
- COMPRESSION BOLTS (ZINC PLATED).....SA-193-B7
- COMPRESSION NUTS (ZINC PLATED).....SA-194-2H
- CONNECTION STUDS (ZINC PLATED).....SA-193-B7
- CONNECTION NUTS (ZINC PLATED).....SA-193-2H
- SHROUD (OPTIONAL).....ALUMINIUM
- PAINT.....CORROSION RESISTANT PAINT

TYPICAL DRAWING, FINALE DIMENSIONS AND DESIGN MAY VARY DESSIN TYPIQUE, LES DIMENSIONS FINALES ET LE DESIGN PEUVENT VARIER.			
TITLE / TITRE <b>PLATE HEAT EXCHANGERS (2 PASS)</b> <b>MODEL FF2900B,M (OPTION DOUBLE WALL AVAILABLE)</b>			
		PROJECT / PROJET	
860 BOULEVARD INDUSTRIEL BOIS-DES-FILION, QC J6Z 4V7, (450) 621-2995		CUSTOMER / CLIENT	
DRAWING BY / DESSINATEUR <b>M. LYMBURNER</b>		PART LIST N° / LISTE DE MATERIEL N°	DATE / DATE
SCALE / ECHELLE <b>N / A</b>		DRAWING N° / N° DESSIN <b>FF2900B,M (2 PASS)</b>	REV <b>0</b>

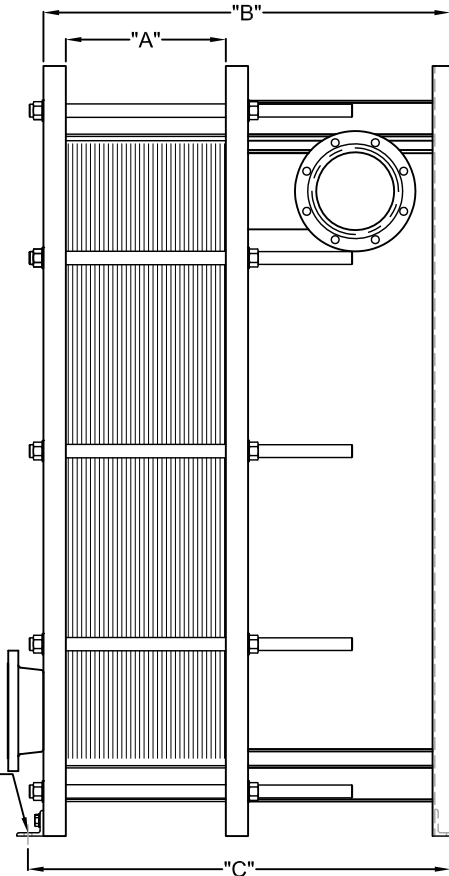
\*\*\*DIMENSIONS SUBJECT TO CHANGE WITHOUT NOTICE. DO NOT USE FOR CONSTRUCTION PURPOSES.  
 \*\*\*LES DIMENSIONS SONT SUJET AU CHANGEMENT SANS PRÉAVIS. NE PAS UTILISER POUR RÉFÉRENCE DE CONSTRUCTION.

NOTE: DETAIL "A" SEE DATA SHEET  
 DETAIL "B" & "C" REFER TO AS BUILT  
 DRAWING (ON DEMAND)

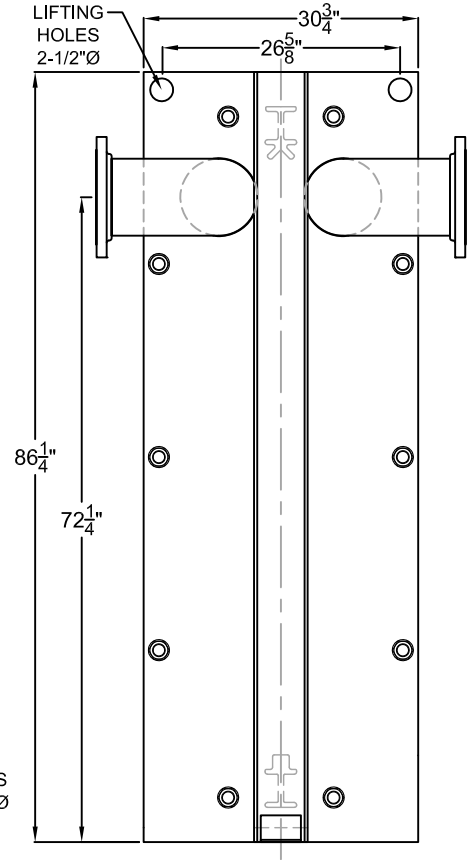
**SUBMITTAL SHEET**  
 ISSUE DATE: 2008/06/10  
 REVISION DATE: 2009/03/18  
 SECTION: 8



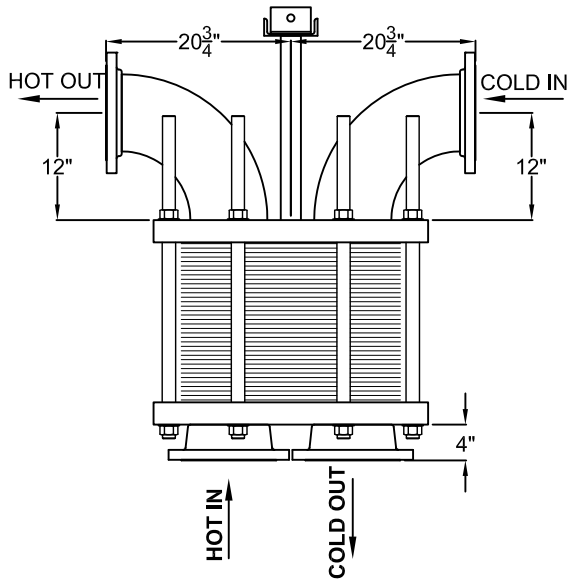
**FRONT VIEW**



**SIDE VIEW**



**REAR VIEW**



**TOP VIEW**

**STANDARD MATERIALS OF CONSTRUCTION**

- CONNECTION.....8" FLANGE
- FIXED PLATES.....SA-515-70, SA-516-70, OR EQUIV.
- END FRAMES.....SA-515-70, SA-516-70, OR EQUIV.
- PLATE HANGER.....TYPE 304S/S
- COMPRESSION BOLTS (ZINC PLATED).....SA-193-B7
- COMPRESSION NUTS (ZINC PLATED).....SA-194-2H
- CONNECTION STUDS (ZINC PLATED).....SA-193-B7
- CONNECTION NUTS (ZINC PLATED).....SA-193-2H
- SHROUD (OPTIONAL).....ALUMINIUM
- PAINT.....CORROSION RESISTANT PAINT

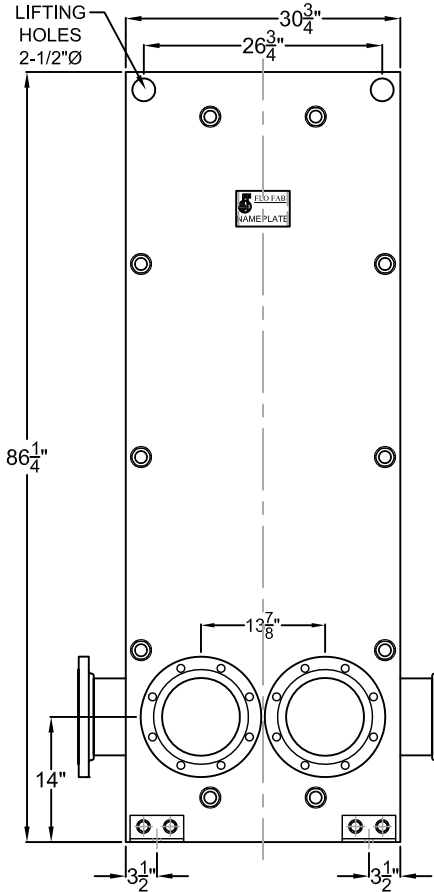
\*\*\*DIMENSIONS SUBJECT TO CHANGE WITHOUT NOTICE. DO NOT USE FOR CONSTRUCTION PURPOSES.  
 \*\*\*LES DIMENSIONS SONT SUJET AU CHANGEMENT SANS PRÉAVIS. NE PAS UTILISER POUR RÉFÉRENCE DE CONSTRUCTION.

TYPICAL DRAWING, FINALE DIMENSIONS AND DESIGN MAY VARY DESSIN TYPIQUE, LES DIMENSION FINALES ET LE DESIGN PEUVENT VARIER.			
TITLE / TITRE <b>PLATE HEAT EXCHANGERS (3 PASS)      MODEL FF2900B,M (OPTION DOUBLE WALL AVAILABLE)</b>			
		PROJECT / PROJET	
860 BOULEVARD INDUSTRIEL BOIS-DES-FILION, QC J6Z 4V7, (450) 621-2995		CUSTOMER / CLIENT	
DRAWING BY / DESSINATEUR <b>M. LYMBURNER</b>		PART LIST N° / LISTE DE MATERIEL N°	DATE / DATE
SCALE / ECHELLE <b>N / A</b>		DRAWING N° / N° DESSIN <b>FF2900B,M (3 PASS)</b>	REV <b>0</b>

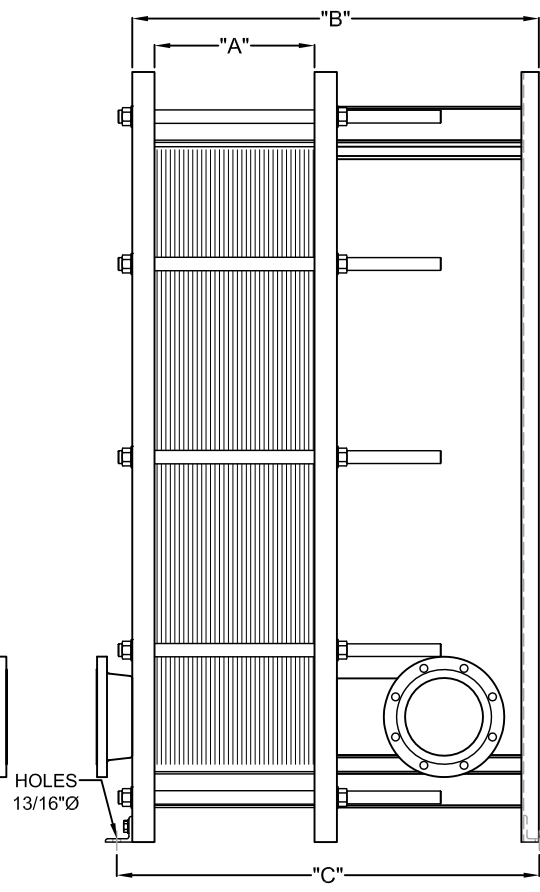


NOTE: DETAIL "A" SEE DATA SHEET  
 DETAIL "B" & "C" REFER TO AS BUILT  
 DRAWING (ON DEMAND)

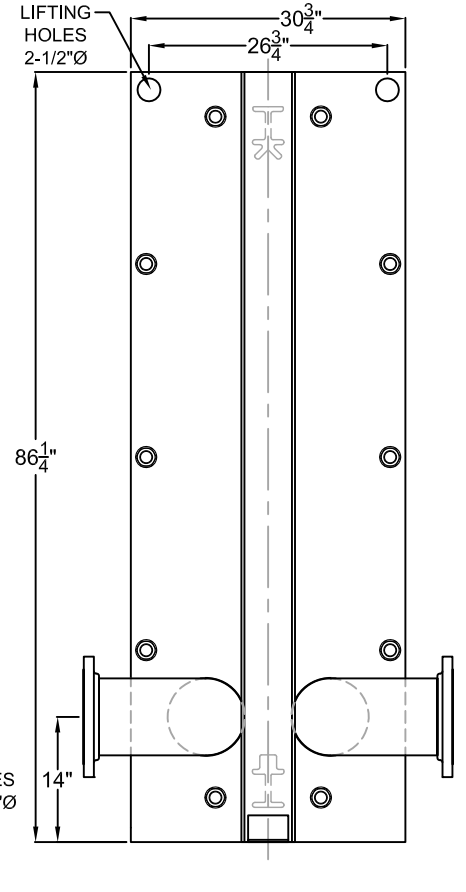
**SUBMITTAL SHEET**  
 ISSUE DATE: 2008/06/10  
 REVISION DATE: 2009/03/18  
 SECTION: 8



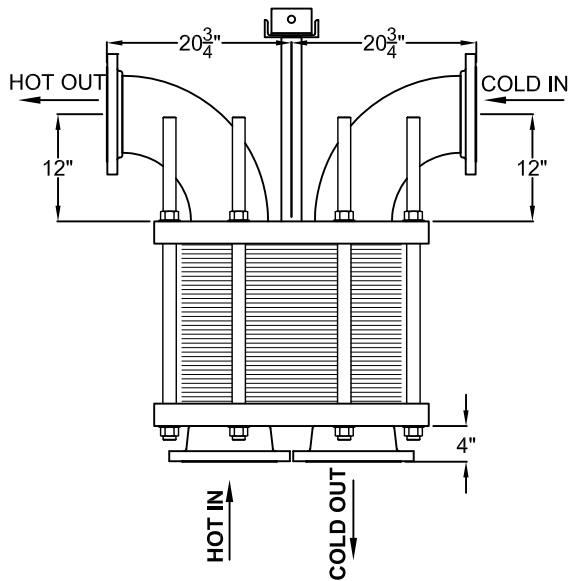
**FRONT VIEW**



**SIDE VIEW**



**REAR VIEW**



**TOP VIEW**

**STANDARD MATERIALS  
 OF CONSTRUCTION**

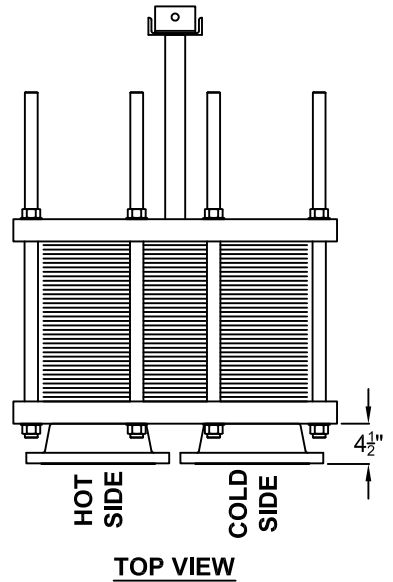
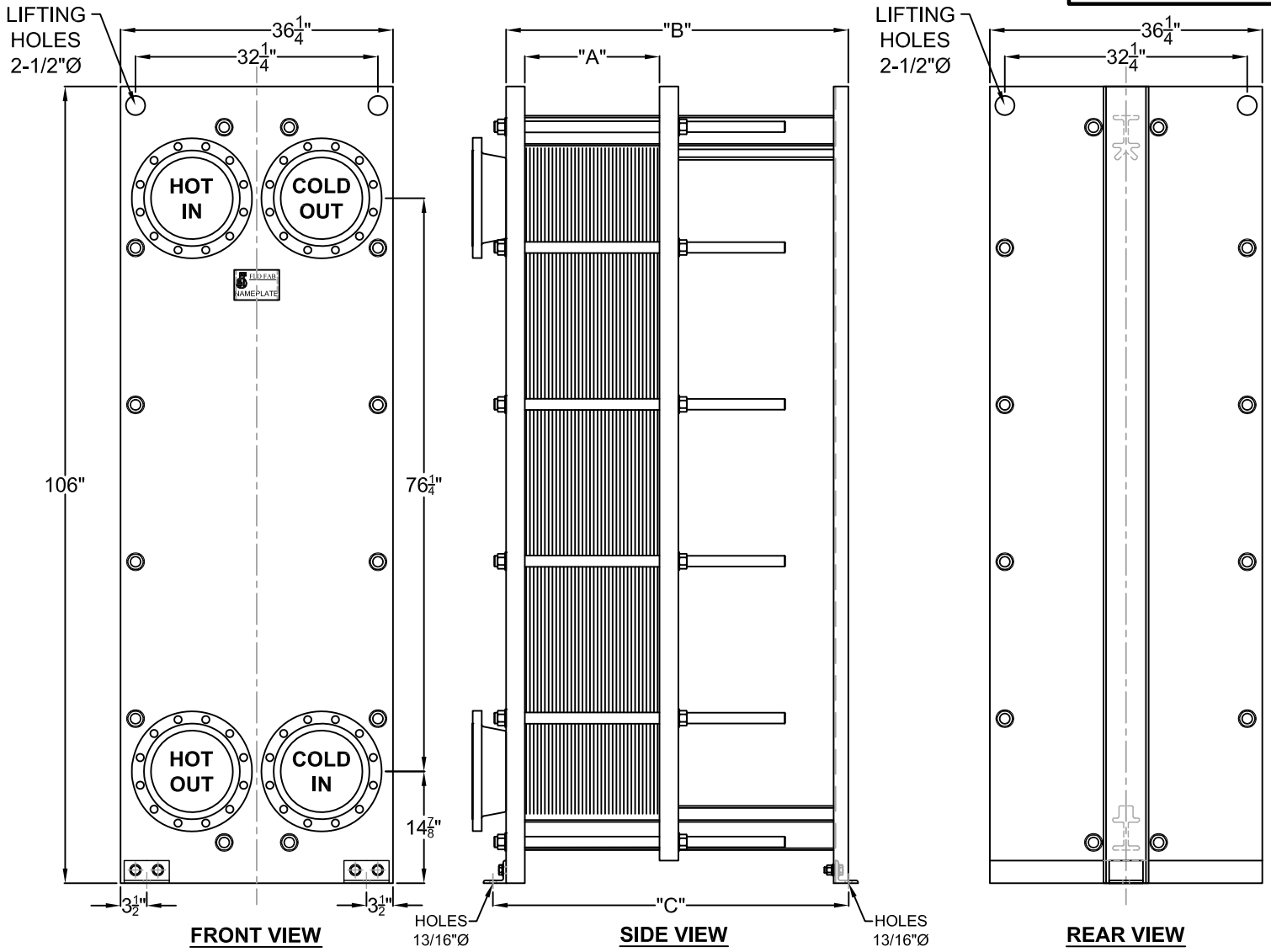
- CONNECTION.....8" FLANGE
- FIXED PLATES.....SA-515-70, SA-516-70, OR EQUIV.
- END FRAMES.....SA-515-70, SA-516-70, OR EQUIV.
- PLATE HANGER.....TYPE 304S/S
- COMPRESSION BOLTS (ZINC PLATED).....SA-193-B7
- COMPRESSION NUTS (ZINC PLATED).....SA-194-2H
- CONNECTION STUDS (ZINC PLATED).....SA-193-B7
- CONNECTION NUTS (ZINC PLATED).....SA-193-2H
- SHROUD (OPTIONAL).....ALUMINIUM
- PAINT.....CORROSION RESISTANT PAINT

\*\*\*DIMENSIONS SUBJECT TO CHANGE WITHOUT NOTICE. DO NOT USE FOR CONSTRUCTION PURPOSES.  
 \*\*\*LES DIMENSIONS SONT SUJET AU CHANGEMENT SANS PRÉAVIS. NE PAS UTILISER POUR RÉFÉRENCE DE CONSTRUCTION.

TYPICAL DRAWING, FINALE DIMENSIONS AND DESIGN MAY VARY DESSIN TYPIQUE, LES DIMENSION FINALES ET LE DESIGN PEUVENT VARIER.			
TITLE / TITRE <b>PLATE HEAT EXCHANGERS (4 PASS)</b> <b>MODEL FF2900B,M (OPTION DOUBLE WALL AVAILABLE)</b>			
 860 BOULEVARD INDUSTRIEL BOIS-DES-FILION, QC J6Z 4V7, (450) 621-2995	PROJECT / PROJET		DATE / DATE
	CUSTOMER / CLIENT		
DRAWN BY / DESSINATEUR <b>M. LYMBURNER</b>	SCALE / ECHELLE N / A	DRAWING N° / N° DESSIN FF2900B,M (4 PASS)	REV 0

NOTE: DETAIL "A" SEE DATA SHEET  
 DETAIL "B" & "C" REFER TO AS BUILT  
 DRAWING (ON DEMAND)

**SUBMITTAL SHEET**  
 ISSUE DATE: 2008/06/10  
 REVISION DATE: 2009/03/18  
 SECTION: 8



**STANDARD MATERIALS OF CONSTRUCTION**

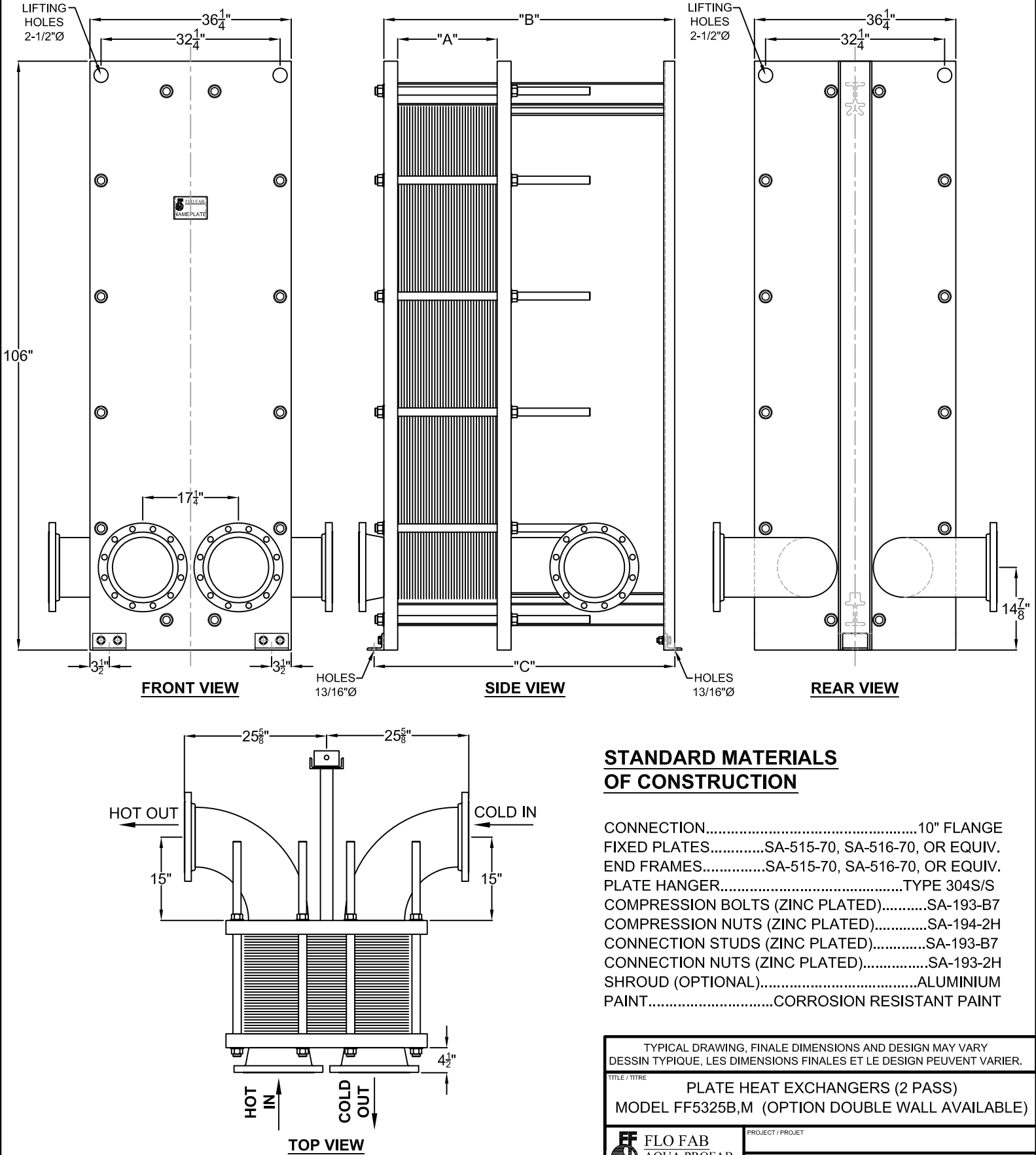
- CONNECTION.....10" FLANGE
- FIXED PLATES.....SA-515-70, SA-516-70, OR EQUIV.
- END FRAMES.....SA-515-70, SA-516-70, OR EQUIV.
- PLATE HANGER.....TYPE 304S/S
- COMPRESSION BOLTS (ZINC PLATED).....SA-193-B7
- COMPRESSION NUTS (ZINC PLATED).....SA-194-2H
- CONNECTION STUDS (ZINC PLATED).....SA-193-B7
- CONNECTION NUTS (ZINC PLATED).....SA-193-2H
- SHROUD (OPTIONAL).....ALUMINIUM
- PAINT.....CORROSION RESISTANT PAINT

TYPICAL DRAWING, FINALE DIMENSIONS AND DESIGN MAY VARY DESSIN TYPIQUE, LES DIMENSIONS FINALES ET LE DESIGN PEUVENT VARIER.			
TITLE / TITRE <b>PLATE HEAT EXCHANGERS (1 PASS)</b> <b>MODEL FF5325B,M (OPTION DOUBLE WALL AVAILABLE)</b>			
		PROJECT / PROJET	
860 BOULEVARD INDUSTRIEL BOIS-DES-FILION, QC J6Z 4V7, (450) 621-2995		CUSTOMER / CLIENT	
DRAWING BY / DESSINATEUR <b>M. LYMBURNER</b>		DATE / DATE	
SCALE / ECHELLE <b>N / A</b>		DRAWING N° / N° DESSIN <b>FF5325B,M (1 PASS)</b>	
REV <b>0</b>			

\*\*\*DIMENSIONS SUBJECT TO CHANGE WITHOUT NOTICE. DO NOT USE FOR CONSTRUCTION PURPOSES.  
 \*\*\*LES DIMENSIONS SONT SUJET AU CHANGEMENT SANS PRÉAVIS. NE PAS UTILISER POUR RÉFÉRENCE DE CONSTRUCTION.

NOTE: DETAIL "A" SEE DATA SHEET  
 DETAIL "B" & "C" REFER TO AS BUILT  
 DRAWING (ON DEMAND)

**SUBMITTAL SHEET**  
 ISSUE DATE: 2008/06/10  
 REVISION DATE: 2009/03/18  
 SECTION: 8



**STANDARD MATERIALS OF CONSTRUCTION**

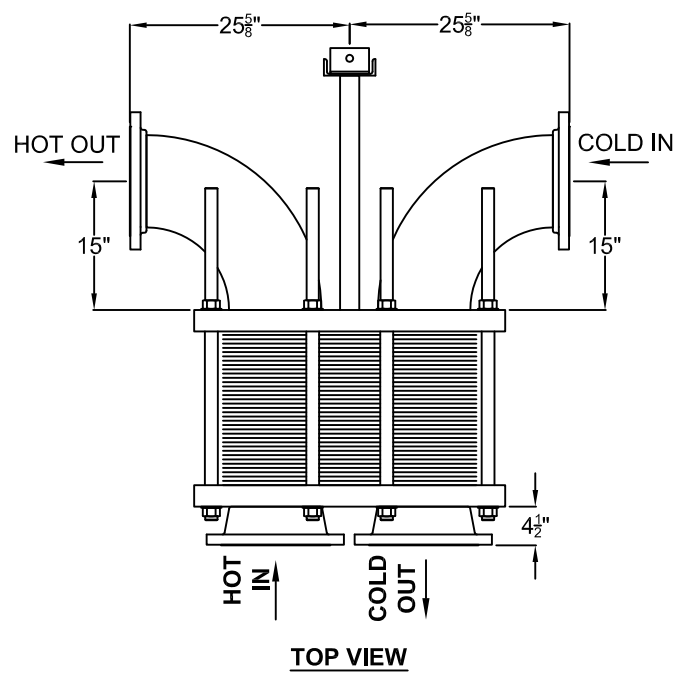
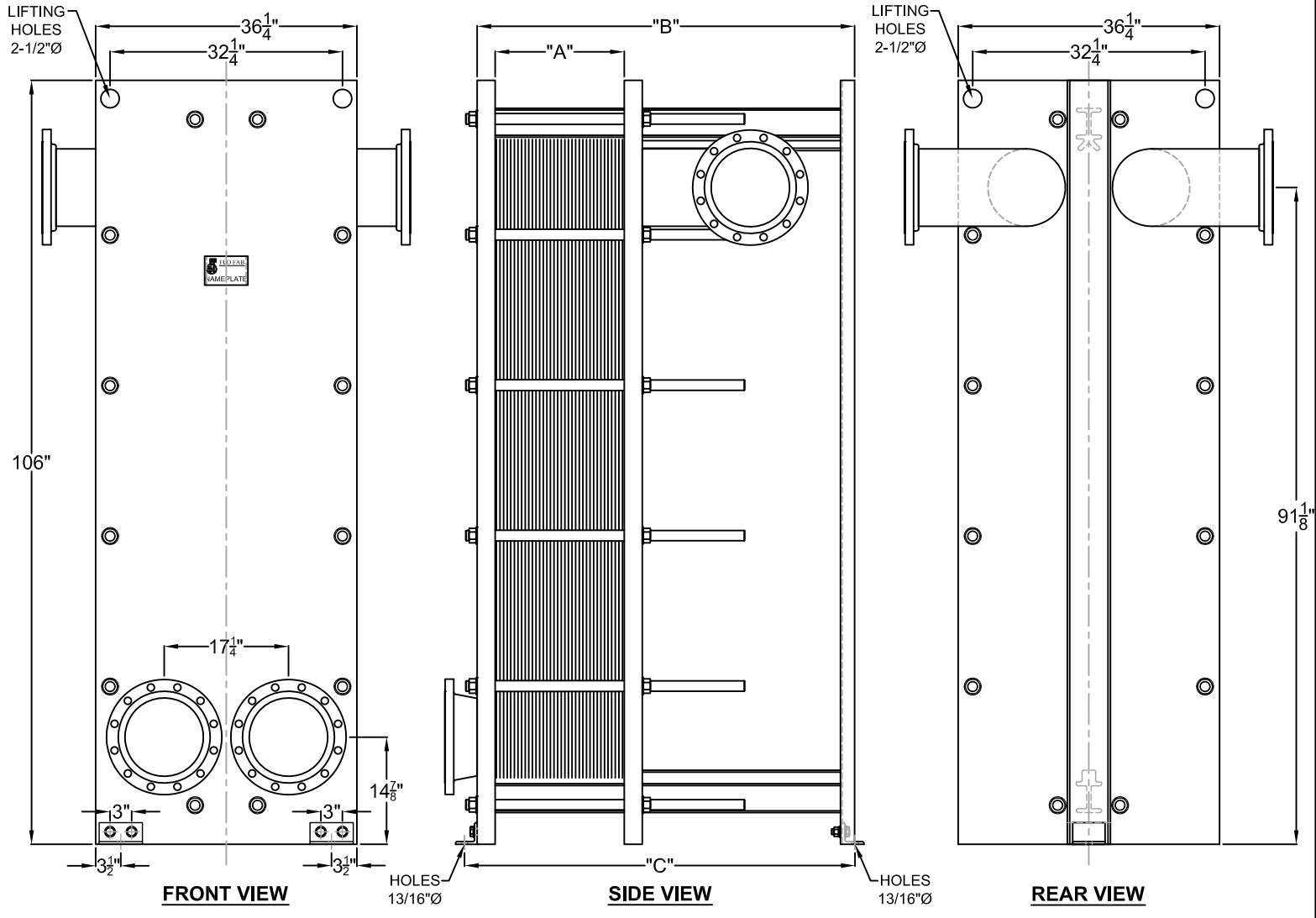
- CONNECTION..... 10" FLANGE
- FIXED PLATES..... SA-515-70, SA-516-70, OR EQUIV.
- END FRAMES..... SA-515-70, SA-516-70, OR EQUIV.
- PLATE HANGER..... TYPE 304S/S
- COMPRESSION BOLTS (ZINC PLATED)..... SA-193-B7
- COMPRESSION NUTS (ZINC PLATED)..... SA-194-2H
- CONNECTION STUDS (ZINC PLATED)..... SA-193-B7
- CONNECTION NUTS (ZINC PLATED)..... SA-193-2H
- SHROUD (OPTIONAL)..... ALUMINIUM
- PAINT..... CORROSION RESISTANT PAINT

TYPICAL DRAWING, FINALE DIMENSIONS AND DESIGN MAY VARY DESSIN TYPIQUE, LES DIMENSIONS FINALES ET LE DESIGN PEUVENT VARIER.			
TITLE / TITRE <b>PLATE HEAT EXCHANGERS (2 PASS)</b> <b>MODEL FF5325B,M (OPTION DOUBLE WALL AVAILABLE)</b>			
PROJECT / PROJET		CUSTOMER / CLIENT	
PART LIST N° / LISTE DE MATERIEL N°		DATE / DATE	
FLO FAB AQUA PROFAB 860 BOULEVARD INDUSTRIEL BOIS-DES-FILION, QC J6Z 4V7, (450) 621-2995			
DRAWN BY / DESSINATEUR <b>M. LYMBURNER</b>	SCALE / ECHELLE <b>N / A</b>	DRAWING N° / N° DESSIN <b>FF5325B,M (2 PASS)</b>	REV <b>0</b>

\*\*\*DIMENSIONS SUBJECT TO CHANGE WITHOUT NOTICE. DO NOT USE FOR CONSTRUCTION PURPOSES.  
 \*\*\*LES DIMENSIONS SONT SUJET AU CHANGEMENT SANS PRÉAVIS. NE PAS UTILISER POUR RÉFÉRENCE DE CONSTRUCTION.

NOTE: DETAIL "A" SEE DATA SHEET  
 DETAIL "B" & "C" REFER TO AS BUILT  
 DRAWING (ON DEMAND)

**SUBMITTAL SHEET**  
 ISSUE DATE: 2008/06/10  
 REVISION DATE: 2009/03/13  
 SECTION: 8



**STANDARD MATERIALS OF CONSTRUCTION**

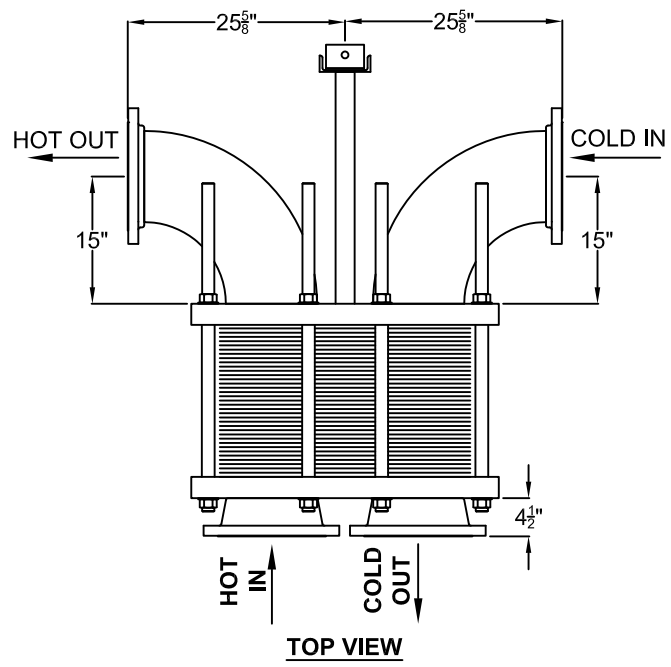
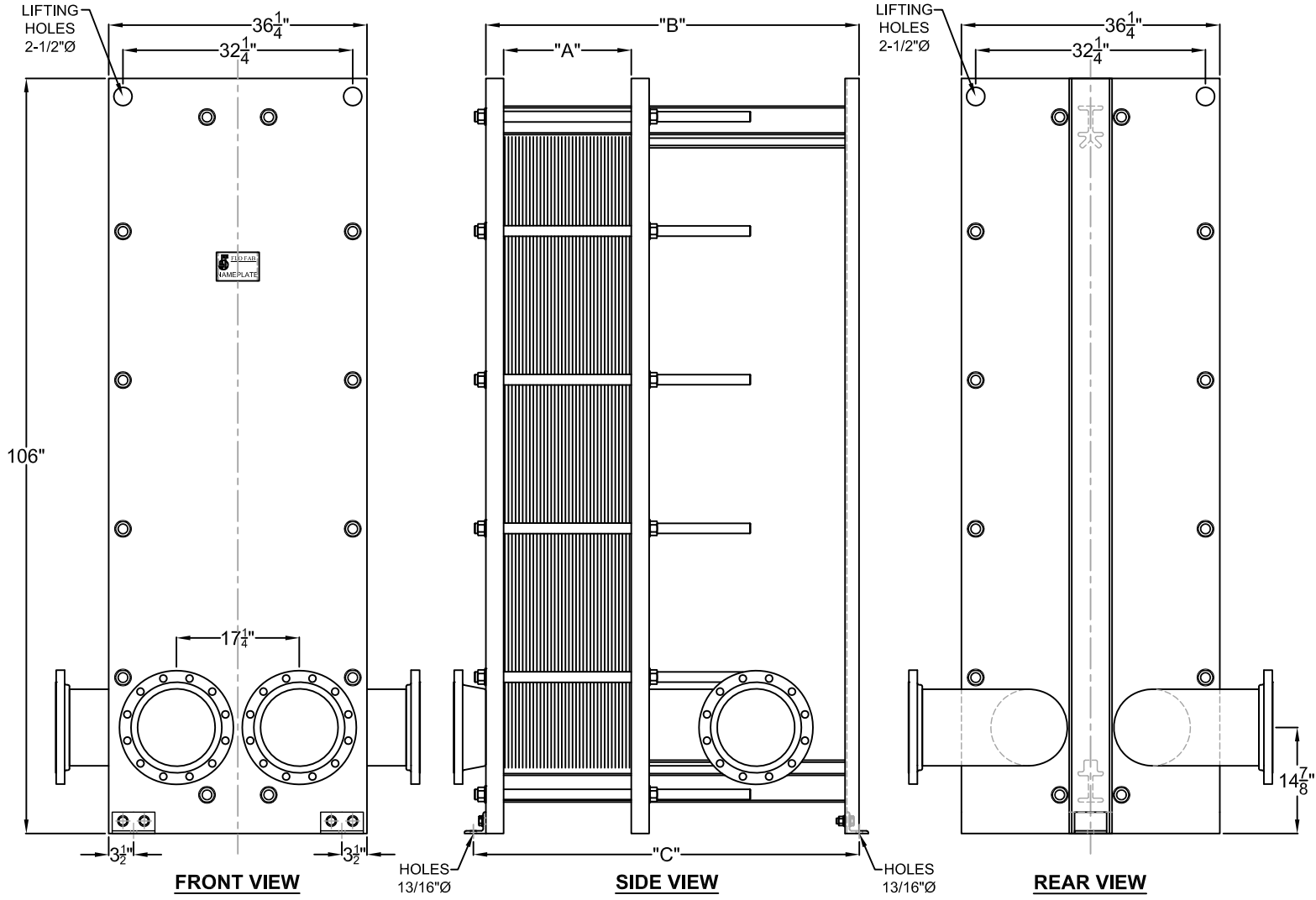
- CONNECTION.....10" FLANGE
- FIXED PLATES.....SA-515-70, SA-516-70, OR EQUIV.
- END FRAMES.....SA-515-70, SA-516-70, OR EQUIV.
- PLATE HANGER.....TYPE 304S/S
- COMPRESSION BOLTS (ZINC PLATED).....SA-193-B7
- COMPRESSION NUTS (ZINC PLATED).....SA-194-2H
- CONNECTION STUDS (ZINC PLATED).....SA-193-B7
- CONNECTION NUTS (ZINC PLATED).....SA-193-2H
- SHROUD (OPTIONAL).....ALUMINIUM PAINT
- PAIN.....CORROSION RESISTANT PAINT

TYPICAL DRAWING, FINALE DIMENSIONS AND DESIGN MAY VARY DESSIN TYPIQUE, LES DIMENSIONS FINALES ET LE DESIGN PEUVENT VARIER.			
TITLE / TITRE <b>PLATE HEAT EXCHANGERS (3 PASS)</b> <b>MODEL FF5325B,M (OPTION DOUBLE WALL AVAILABLE)</b>			
PROJECT / PROJET		CUSTOMER / CLIENT	
PART LIST N° / LISTE DE MATERIEL N°		DATE / DATE	
FLO FAB AQUA PROFAB 860 BOULEVARD INDUSTRIEL BOIS-DES-FILION, QC J6Z 4V7, (450) 621-2995			
DRAWN BY / DESSINATEUR <b>M. LYMBURNER</b>	SCALE / ECHELLE <b>N / A</b>	DRAWING N° / N° DESSIN <b>FF5325B,M (3 PASS)</b>	REV <b>0</b>

\*\*\*DIMENSIONS SUBJECT TO CHANGE WITHOUT NOTICE. DO NOT USE FOR CONSTRUCTION PURPOSES.  
 \*\*\*LES DIMENSIONS SONT SUJET AU CHANGEMENT SANS PRÉAVIS. NE PAS UTILISER POUR RÉFÉRENCE DE CONSTRUCTION.

NOTE: DETAIL "A" SEE DATA SHEET  
 DETAIL "B" & "C" REFER TO AS BUILT  
 DRAWING (ON DEMAND)

**SUBMITTAL SHEET**  
 ISSUE DATE: 2008/06/10  
 REVISION DATE: 2009/03/18  
 SECTION: 8



**STANDARD MATERIALS OF CONSTRUCTION**

- CONNECTION.....10" FLANGE
- FIXED PLATES.....SA-515-70, SA-516-70, OR EQUIV.
- END FRAMES.....SA-515-70, SA-516-70, OR EQUIV.
- PLATE HANGER.....TYPE 304S/S
- COMPRESSION BOLTS (ZINC PLATED).....SA-193-B7
- COMPRESSION NUTS (ZINC PLATED).....SA-194-2H
- CONNECTION STUDS (ZINC PLATED).....SA-193-B7
- CONNECTION NUTS (ZINC PLATED).....SA-193-2H
- SHROUD (OPTIONAL).....ALUMINIUM
- PAINT.....CORROSION RESISTANT PAINT

TYPICAL DRAWING, FINALE DIMENSIONS AND DESIGN MAY VARY DESSIN TYPIQUE, LES DIMENSIONS FINALES ET LE DESIGN PEUVENT VARIER.			
TITLE / TITRE <b>PLATE HEAT EXCHANGERS (4 PASS)</b> <b>MODEL FF5325B,M (OPTION DOUBLE WALL AVAILABLE)</b>			
PROJECT / PROJET		CUSTOMER / CLIENT	
PART LIST N° / LISTE DE MATERIEL N°		DATE / DATE	
FLO FAB AQUA PROFAB 860 BOULEVARD INDUSTRIEL BOIS-DES-FILION, QC J6Z 4V7, (450) 621-2995			
DRAWN BY / DESSINATEUR <b>M. LYMBURNER</b>	SCALE / ECHELLE <b>N / A</b>	DRAWING N° / N° DESSIN <b>FF5325B,M (4 PASS)</b>	REV <b>0</b>

\*\*\*DIMENSIONS SUBJECT TO CHANGE WITHOUT NOTICE. DO NOT USE FOR CONSTRUCTION PURPOSES.  
 \*\*\*LES DIMENSIONS SONT SUJET AU CHANGEMENT SANS PRÉAVIS. NE PAS UTILISER POUR RÉFÉRENCE DE CONSTRUCTION.