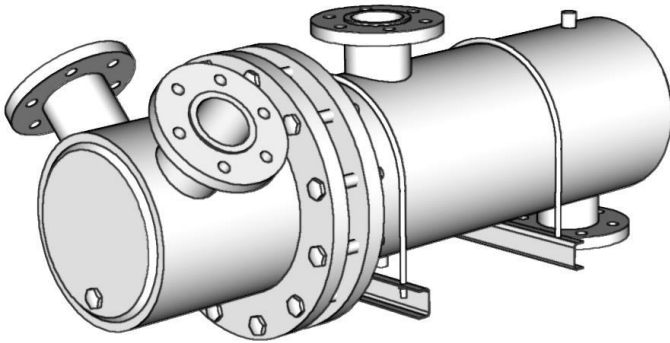


W18418X

U-TUBE HEAT EXCHANGERS

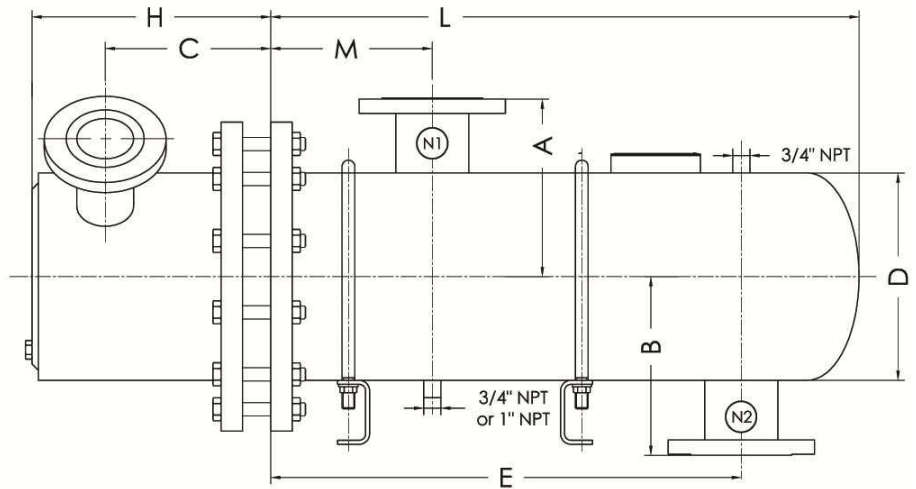
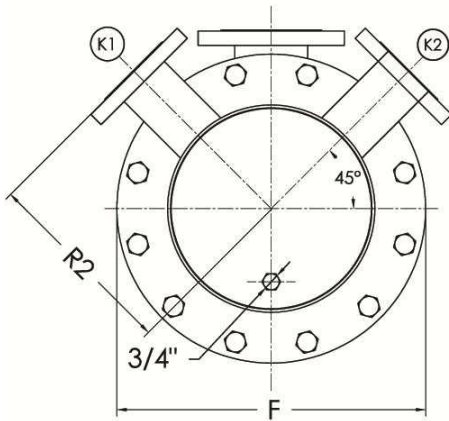
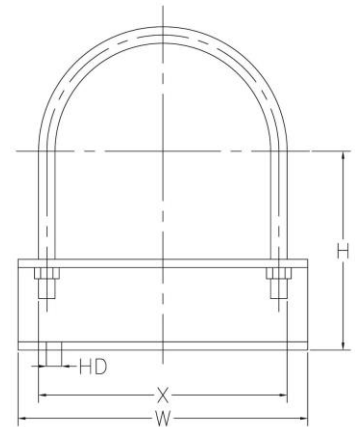
4 Pass Water To Liquid – 18" Shell Diameter



Saddle Dimensions

Unit Size				
Shell (Nom.)	H	W	X	HD
18"	13	21	14	3/4"

Port Designations			
N1	N2	K1	K2
Inlet	Outlet	Outlet	Inlet
Hot Water	Hot Water	Cold Water	Cold Water



Dimensions are in Inches

Model	R2	K1/K2	C	H	D	F	M	E	B	A	L	N1	N2	HTA (sqft)	Est. Ship. Weight(Lbs)
W184181	15	4" Flange	12 3/4	18	18	25	13	27 1/2	14	14	36 1/2	6" Flange	6" Flange	130.7	1102
W184182	15	4" Flange	12 3/4	18	18	25	13	39 1/2	14	14	48 1/2	8" Flange	8" Flange	177	1244
W184183	15	4" Flange	12 3/4	18	18	25	13	51	14	14	60 1/2	8" Flange	8" Flange	223.4	1383
W184184	15	4" Flange	12 3/4	18	18	25	13	62 1/2	14	14	72 1/2	10" Flange	10" Flange	269.7	1526
W184185	15	4" Flange	12 3/4	18	18	25	13	74 1/2	14	14	84 1/2	10" Flange	10" Flange	316.1	1645
W184186	15	4" Flange	12 3/4	18	18	25	13	86 1/2	14	14	96 1/2	10" Flange	10" Flange	362.4	1786
W184187	15	4" Flange	12 3/4	18	18	25	13	98 1/2	14	14	108 1/2	12" Flange	12" Flange	408.8	1932
W184188	15	4" Flange	12 3/4	18	18	25	13	110 1/2	14	14	120 1/2	12" Flange	12" Flange	455.1	2071

Materials Of Construction

	Standard	Optional
Shell	Steel	Stainless Steel (304/316)
Tubes	Stainless Steel (304)	Copper, SS 316, 90/10 CuNi
Tubesheet	Steel	Stainless Steel (304/316)
Connections	Steel	Stainless Steel (304/316)
Head	Cast Iron/Steel	Stainless Steel (304/316)
Gaskets	Non-asbestos, pressed fiber	

Design Parameters

	Standard		Optional	
	Design Pressure (PSI)	Design Temperature (F)	Design Pressure (PSI)	Design Temperature (F)
Shell	150	375	300	421
Tubes	150	375	400	448

- Not certified drawings. Dimensions subject to change without notice.