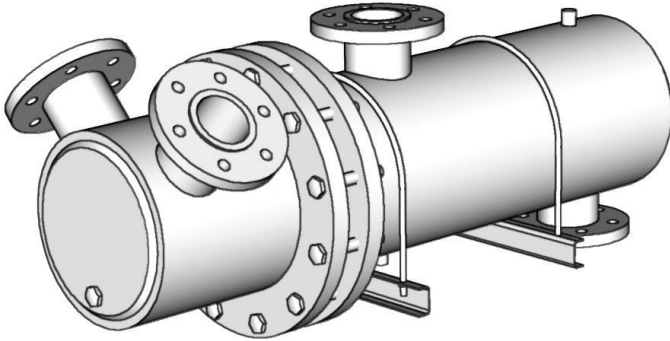


W24424X

U-TUBE HEAT EXCHANGERS

4 Pass Water To Liquid – 24" Shell Diameter

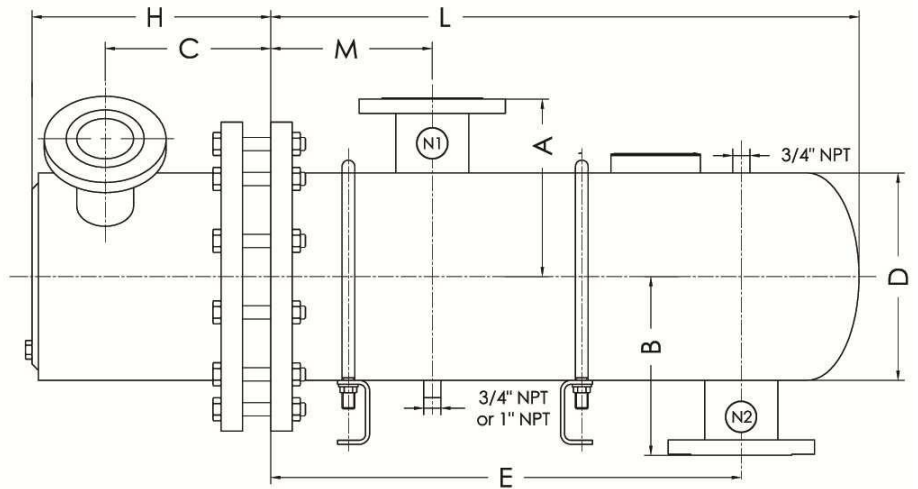
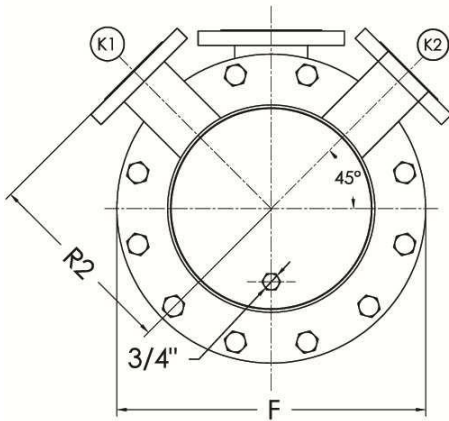
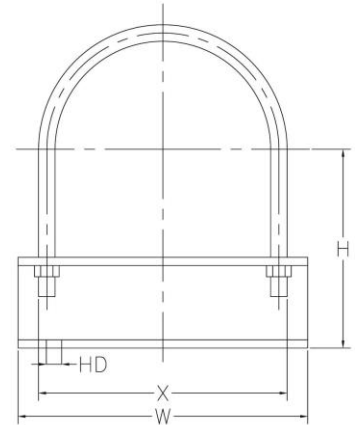


Saddle Dimensions

| Unit Size | | | | |
|--------------|----|----|----|-----|
| Shell (Nom.) | H | W | X | HD |
| 24" | 18 | 27 | 19 | 7/8 |

Port Designations

| N1 | N2 | K1 | K2 |
|-----------|-----------|------------|------------|
| Inlet | Outlet | Outlet | Inlet |
| Hot Water | Hot Water | Cold Water | Cold Water |



Dimensions are in Inches

| Model | R2 | K1/K2 | C | H | D | F | M | E | B | A | L | N1 | N2 | HTA (sqft) | Est. Ship. Weight(Lbs) |
|---------|--------|-----------|--------|--------|----|----|----|-----|----|----|-----|------------|------------|------------|------------------------|
| W244241 | 18 1/2 | 8" Flange | 17 7/8 | 25 5/8 | 24 | 32 | 14 | 25 | 18 | 18 | 38 | 12" Flange | 12" Flange | 236 | 1910 |
| W244242 | 18 1/2 | 8" Flange | 17 7/8 | 25 5/8 | 24 | 32 | 14 | 37 | 18 | 18 | 50 | 12" Flange | 12" Flange | 324 | 2128 |
| W244243 | 18 1/2 | 8" Flange | 17 7/8 | 25 5/8 | 24 | 32 | 14 | 49 | 18 | 18 | 62 | 12" Flange | 12" Flange | 412 | 2346 |
| W244244 | 18 1/2 | 8" Flange | 17 7/8 | 25 5/8 | 24 | 32 | 14 | 61 | 18 | 18 | 74 | 12" Flange | 12" Flange | 500 | 2564 |
| W244245 | 18 1/2 | 8" Flange | 17 7/8 | 25 5/8 | 24 | 32 | 14 | 73 | 18 | 18 | 86 | 12" Flange | 12" Flange | 588 | 2782 |
| W244246 | 18 1/2 | 8" Flange | 17 7/8 | 25 5/8 | 24 | 32 | 14 | 85 | 18 | 18 | 98 | 12" Flange | 12" Flange | 676 | 3000 |
| W244247 | 18 1/2 | 8" Flange | 17 7/8 | 25 5/8 | 24 | 32 | 15 | 97 | 19 | 19 | 110 | 14" Flange | 14" Flange | 764 | 3218 |
| W244248 | 18 1/2 | 8" Flange | 17 7/8 | 25 5/8 | 24 | 32 | 15 | 109 | 19 | 19 | 122 | 14" Flange | 14" Flange | 852 | 3436 |

Materials Of Construction

| | Standard | Optional |
|-------------|-----------------------------|----------------------------|
| Shell | Steel | Stainless Steel (304/316) |
| Tubes | Stainless Steel (304) | Copper, SS 316, 90/10 CuNi |
| Tubesheet | Steel | Stainless Steel (304/316) |
| Connections | Steel | Stainless Steel (304/316) |
| Head | Cast Iron/Steel | Stainless Steel (304/316) |
| Gaskets | Non-asbestos, pressed fiber | |

Design Parameters

| | Standard | | Optional | |
|-------|-----------------------|------------------------|-----------------------|------------------------|
| | Design Pressure (PSI) | Design Temperature (F) | Design Pressure (PSI) | Design Temperature (F) |
| Shell | 150 | 375 | 300 | 421 |
| Tubes | 150 | 375 | 400 | 448 |

- Not certified drawings. Dimensions subject to change without notice.