



# Model: 500-67S1U

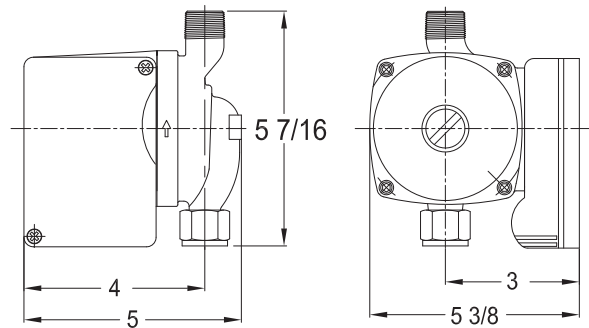
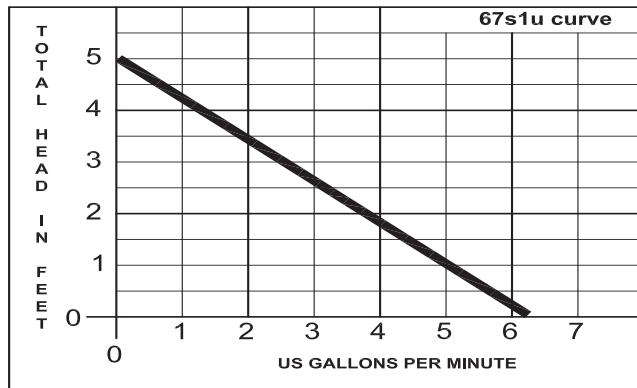
## Features:

These Flo-Fab Circulator Pumps are designed to be installed in residential potable domestic hot water systems to provide recirculation (in a RETRO-FIT application where NO dedicated recirculation pipe has been installed) of domestic hot water resulting in "instant" hot water at fixtures throughout the house. This unit is designed to install ON TOP OF THE WATER HEATER on hot water supply side and will connect directly onto the supply nipple on top of the heater. This pump will come equipped with a standard terminal box with 1/2" FNPT to "Hard wire" direct to 115 VAC **AND** will come with a 6 Ft. long 3 prong electric cord and strain relief connection for "outlet plug in" installations. **NOTE: This unit MUST be installed with the Power-Flo Pumps "Retro-Fit Valve" (PFRFV)**

- **MOTOR:** 2-pole, 3600rpm, single phase, PSC with Thermal protection
- **LIQUID TEMPERATURE:** 32°F - 230°F
- **MAX. SYSTEM PRESSURE:** 145 PSI
- **INSULATION:** Class H
- **VOLUTE:** Stainless Steel
- **CONNECTION:** 3/4" M x 3/4" FNPT
- **POWER CORD:** 6 Foot with 3 prong plug
- **ACCESSORIES:** PFDT - Digital Timer, PFSOA - Snap-On Aquastat, PFRFV - Retro-Fit Valve (Timer and Aquastat can only be used with the 6 Ft power cord with 3 prong plug.)
- **WARRANTY:** 3 year



## Domestic Hot Water Wet Rotor Recirculator Pumps Single Speed Open System Type



MODEL/PART NUMBER	VOLTS/PHASE	AMPS	WATTS	CAPACITOR	WT. lbs
500-67S1U	115/1	0.22	25	2mfd / 450V	5

PF	WRC	21	20	Volute Material C, B, S	Motor Voltage 1 or 2	Connection Type F, S, U
Power-Flo	Wet Rotor Circulator	Shut Off Head (ft)	Max Flow (Gal)	C = Cast Iron B = Lead Free Bronze S = Stainless Steel	1 = 115 V 2 = 230V/1P	F = Flanged S = Copper Sweat U = Union

**EXAMPLE:** 500-120C1F - Pumps - Wet Rotor Circulator - 21' Shut Off Head - 20 GPM Max Flow - Cast Iron Volute - 115 Volt, Flanged Connection.

DHW Recirculator Pumps - Union Connection - Stainless Steel