

PSMCF 50Hz/ 60Hz

IMMERSION TYPE MULTISTAGE CENTRIFUGAL PUMP



FLO FAB

www.flofab.com

Company profile

Flo Fab is a company which specialized in manufacturing and selling various pumps, tanks, and heat exchangers and its accessories. Our Factory occupies 30 thousand square feet, on 130 thousand square feet of land which is located in Bois-des-Filion

Quebec Canada. It

has a convenient transportation on major highways and is approximately 20 kilometers north of the city of Montreal. Our company pays great attention to product quality and the construction of quality management system. Our factory has been in business for more than 40 years.

Our company has over 50 employees including, engineering, designers, R & D and quality control department. The products manufactured are strictly in accordance to standard and every pump is guaranteed to be tested and qualified before being shipped. All tanks and heat exchangers are ASME certified and also tested before being release for shipment.

Our product range covers more than one thousand types over 15 series such as clear water supply, air conditioning, chemical, drainage, sewage handling, boiler feed, condensing, chilled water, heating pumps for municipal, power stations, chemical industry and new or existing buildings.

Our company is not only on track but finds out and designs with the new technology and new products, we devote ourselves in developing new pumping products especially in vertical inline pumps. In recent years we are the first to launch the ZDRI and XRI horizontal, vertical pumps to easy-disassemble these pumps while not removing the pump from the pipeline and also not removing the electric motor.

We will respond to our customers with new and excellent products.



Content

General Data

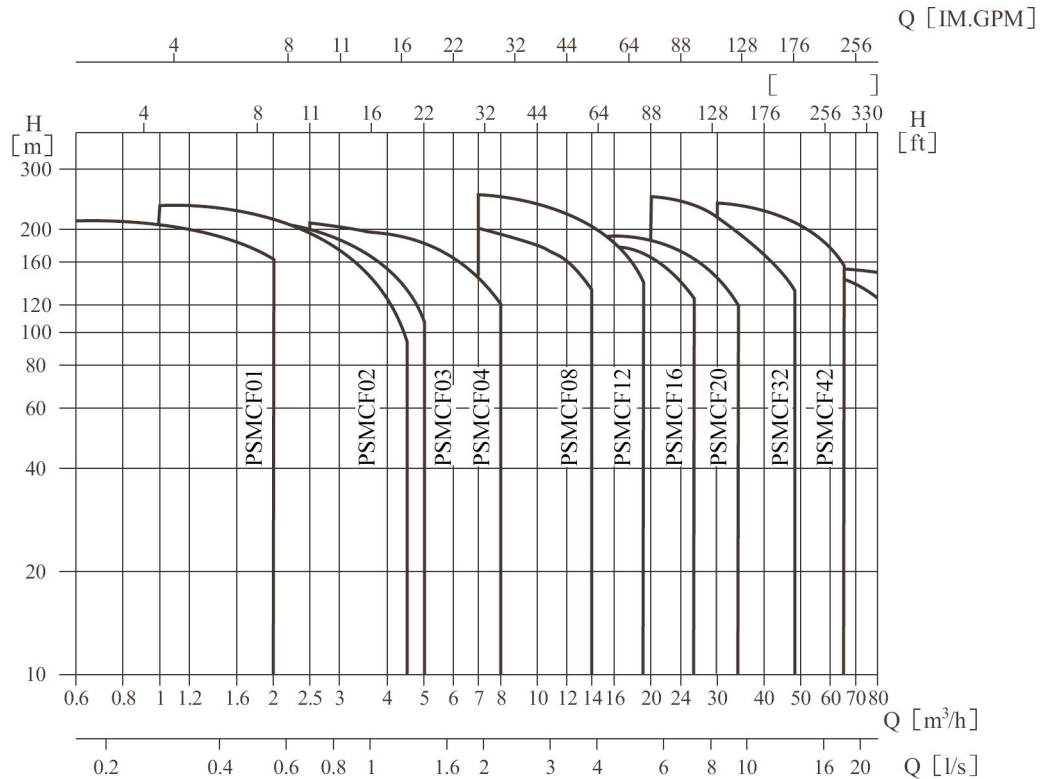
Performance scope -----	2
Product Range -----	2
Application -----	3
Performance curve -----	3
Motor -----	3
Operation conditions -----	3
Definition of model -----	3
Max Inlet pressure -----	4
Max working pressure -----	4
Installation of pump -----	6
Installation sketch -----	6
Curve illustration -----	7
Scope of available products -----	8, 9
Section drawing PSMCF 01, 02, 03, 04 -----	10
Section drawing PSMCF 08, 16, 20 -----	10
Section drawing PSMCF 32, 42 -----	11

Technical Data

PSMCF01,60 Hz -----	12, 13
PSMCF02,60 Hz -----	14, 15
PSMCF03,60 Hz -----	16, 17
PSMCF04,60 Hz -----	18, 19
PSMCF08,60 Hz -----	20, 21
PSMCF16,60 Hz -----	22, 23
PSMCF20,60 Hz -----	24, 25
PSMCF32,60 Hz -----	26, 27
PSMCF42,60 Hz -----	28, 29

General Data

● Performance scope



● Product range

Model	PSMCF01	PSMCF02	PSMCF03	PSMCF04	PSMCF08	PSMCF12	PSMCF16	PSMCF20	PSMCF32	PSMCF42
Rated Flow usgpm	4.4	8.8	13.2	17.6	35.2	52.8	70.4	88	140.8	184.8
Rated Flow (m ³ /h)	1	2	3	4	8	12	16	20	32	42
Rated Flow (l/s)	0.28	0.56	0.83	1.1	2.2	3.3	4.4	5.6	8.9	11.7
Flow Range usgpm	2.6-8	6.1-22	6.6-22	11-35.	30-62	30-83	44-114	52-150	88-211	132-286
Flow range (m ³ /h)	0.6-2	1-4.5	1.5-5	2.5-8	7.14.	7.19	10.26.	12.34	20.48	30.65
Flow range (l/s)	0.17-0.56	0.28-1.25	0.42-1.4	0.7-2.2	1.9-3.9	1.9-5.3	02.8-7.2	3.3-9.4	5.5-13.3	8.3-18
Max pressure psi	323.4	345.45	338.1	308.7	294	367.5	294	294	367.5	382.2
Max pressure (bar)	22	23.5	23	21	20	25	20	20	25	26
Motor HP	0.5-5	0.75-5	0.5-5	1-7.5	1.15.	1.5-20	3-25.	3-25.	5-40.	7.5-60
Motor power (kw)	0.37-3	0.55-4	0.37-4	0.75-5.5	0.75-11	1.1-15	2.2-18.5	2.2-18.5	3-30.	5.5-45
Temperature F	5 @ 248									
Temperature (C)	-15 @ 120									
Max Efficiency (%)	44	46	54	59	64	63	66	69	76	78
Flange connection ANSI	1	1	1	1 1/4	1 1/2	2	2	2	2 1/2	3
Flange connection (DIN)	DN25	DN25	DN25	DN32	DN40	DN50	DN50	DN50	DN65	DN80
Flange Oval NPT	1	1	1	1 1/4	1 1/2					
Flange Oval (pipe)	G1	G1	G1	G1 1/4	G1 1/2					
Flange cutting ferrule joint	DN25	DN25	DN25	DN32	DN40	DN50	DN50	DN50		
Threaded	1	1	1	1 1/4	1 1/2					

● Application

PSMCF is used for conveying cooling liquid, lubricating liquid and condensation water of machine tools, industrial cleaning equipment or other cases that application of immersed pump is suitable, and is applicable to various temperature, flow and pressure ranges. PSMCF is applicable to low-corrosive liquid.

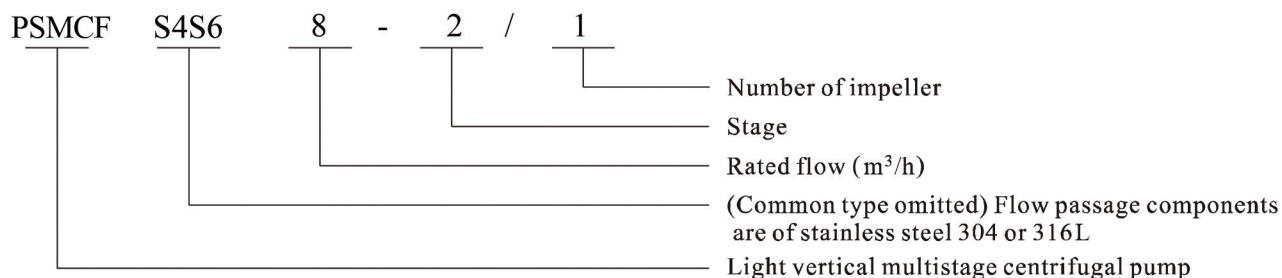
- Concretely, it is applicable to electric spark, lathe, grinding machine, processing center, cooling devices, industrial cleaning equipment, filtering system etc.

● Motor

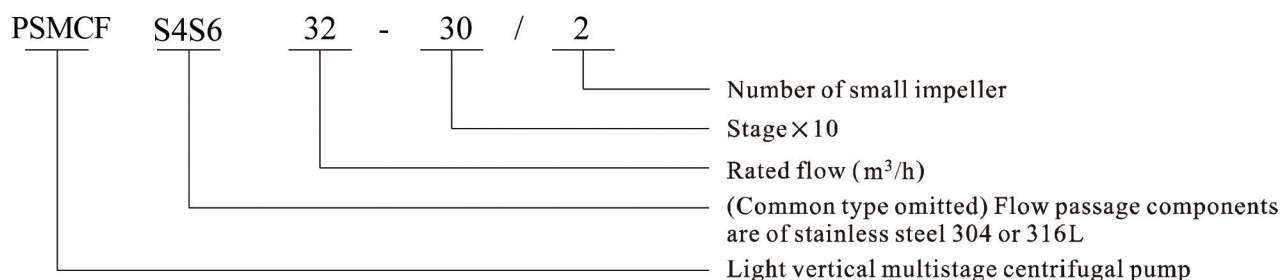
- Full-enclosed air-blast two-pole standard motor
- Protection class: IP55
- Insulation class: F
- Standard voltage:60Hz: 3 X 200-230 / 346-400V
3 X 220-255 / 380-440V
3 X 220-277 / 380-480V

● Definition of model

PSMCF 01, 02, 03, 04, 08, 12, 16 and 20



PSMCF 32, 42, 65, 85, 120 and 150



● Performance curve

- 1 - All curves are based on the measured values of 50Hz: constant motor speed 2900r/min 60 Hz: constant motor speed 3500 r/min;
- 2 - The allowable tolerance of the curve complies with 1809906 Annex A.
- 3 - For measurement, air-free water with temperature 20°C and kinematical viscosity 1 mm²/s.
- 4 - The pump application is in reference to performance scope of Heavy line to prevent overheating due to too low flow and motor overload due to too high flow-rate Etc.

● Operation conditions

- Thin, clean, non-flammable and non-explosive liquid containing no solid granules and fibers.
- Liquid temperature:
Normal temperature type: -15°C ~ +7°C
Hot water type: +70°C ~ +120°C
- Ambient temperature: up to +40°C
- Altitude: up to 1000m

General Data

● Max inlet pressure

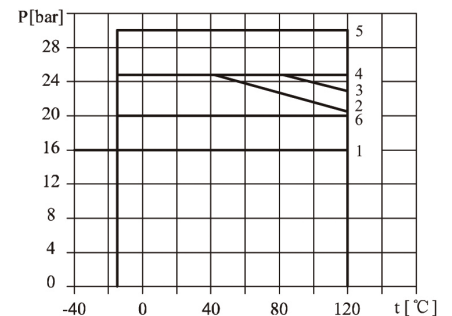
The maximum inlet pressure is shown in the table below. But the actual inlet pressure plus the valve close pressure of the pump shall be lower than the max. allowable working pressure.

Model	Max inlet pressure psi	Max inlet pressure Bar
PSMCF01		
1-2 to 1-6	88.26	6
1-7 to 1-25	147.1	10
PSMCF02		
2-2.	88.26	6
2-3 to 2-7	147.1	10
2-9 to 2-18	220.65	15
PSMCF03		
3-2 to 3-5	88.26	6
3-6 to 3-19	147.1	10
3-20 to 3-25	220.65	15
PSMCF04		
4-2	88.26	6
4-3 to 4-8	147.1	10
4-10 to 4-16	220.65	15
PSMCF08		
8-2/1 to 8-5	88.26	6
8-6 to 8-14	147.1	10
PSMCF12		
12-2/1 to 12-4	88.26	6
12-5 to 12-14	147.1	10
PSMCF16		
16-2/1 to 16-2	88.26	6
16-3 to 16-10	147.1	10
PSMCF20		
20-1 to 20-2	88.26	6
20-3 to 20-10	147.1	10
PSMCF32		
32-10-1 to 32-30-2	58.84	4
32-30 to 32-70	147.1	10
32-80-2 to 32-100-2	220.65	15
PSMCF42		
42-10-1 to 42-20-2	58.84	4
42-20 to 42-40-2	147.1	10
42-40 to 42-70	220.65	15
PSMCF65		
65-10-1 to 65-20-2	58.84	4
65-20 to 65-30-2	147.1	10
65-30 to 65-50-2	220.65	15
PSMCF85		
85-10-1 to 85-10	58.84	4
85-20-2 to 85-20	147.1	10
85-30-2 to 85-40-2	220.65	15
PSMCF120, PSMCF150	220.65	15

● Max working pressure

Model	curve number
PSMCF01	
1-2 to 1-17	1
1-9 to 1-25	2
PSMCF02	
2-2 to 2-11	1
2-13 to 2-18	2
PSMCF03	
3-2 to 3-15	1
3-17 to 3-25	2
PSMCF04	
4-2 to 4-10	1
4-12 to 4-16	2
PSMCF08	
8-2/1 to 8-8	1
8-10 to 8-14	3
PSMCF12	
12-2/1 to 12-7	1
12-8 to 12-14	3
PSMCF16	
16-2 to 16-6	1
16-7 to 16-10	3
PSMCF20	
20-1 to 20-4	1
20-5 to 20-10	3
PSMCF32	
32-10-1 to 32-50-2	1
32-50 to 32-90-2	4
32-90 to 32-100-2	5
PSMCF42	
42-10-1 to 42-30	1
42-10-2 to 42-60	4
42-70-2 to 42-70	5
PSMCF65	
65-10-1 to 65-30	1
65-40-2 to 65-50-2	4
PSMCF85	
85-10-1 to 85-30	1
85-40-2	4
PSMCF120, PSMCF150	6

The following figure shows the limitation of pressure and temperature, which shall be in the scope as shown in the figure.



● Motor

- The motor is fully-sealed, air-cooling standard motor 2 poles
- Protection class: IP55
- Insulation class: F
- Standard voltage, 50Hz: 1 X 220- 230/240V
3 x200/346V
3 X 220- 240/380- 415V
3 X 220- 255/380- 440V
- Standard voltage, 60Hz: 3 x 200- 230/346- 440V
3 X 220- 255/380- 440V
3 X 220- 277/380- 480V

Motors for other voltages can be supplied according to the requirement.

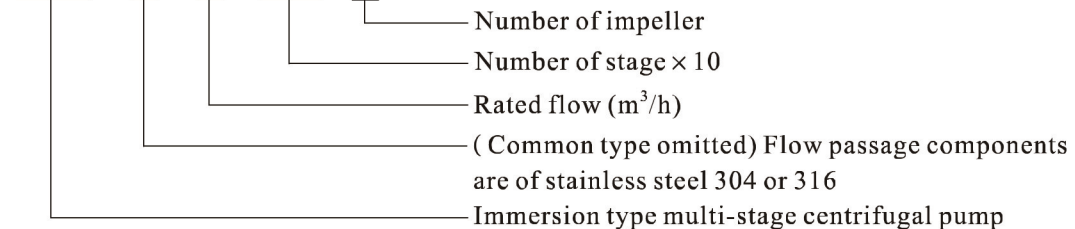
Single phase motors with 0.37- 2.2kW are available.

● Pump

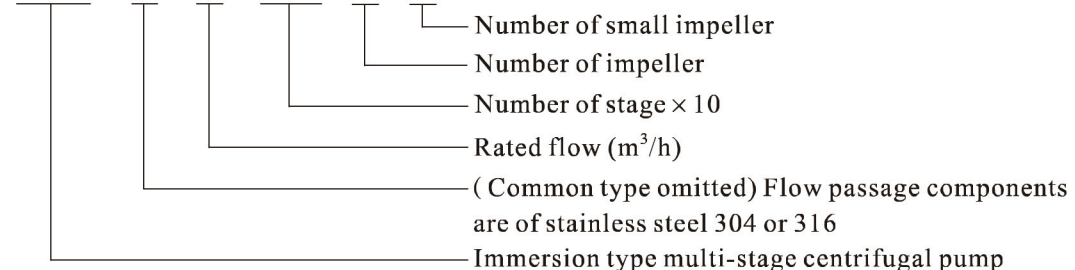
PSMCF is non-self-priming multi-stage centrifugal pump installed with standard motor. The motor shaft is directly connected with the pump shaft through coupling. According to the requirement, the pump can be equipped with intelligent protector, which effectively protects pump from dry rotation, phase lack, overload etc. In order to meet the requirement of installation depth of the water tank or vessel, it is possible to install cavity body for changing length of the pump. Length for different number of stages is shown in the dimensions & weight table and the table of products supplying scope.

● Definition of model

PSMCF 01,02,03,04,08,12,16,20
PSMC 5456 4 - 120 / 12



PSMCF 32, 42, 65, 85, 120 and 150
PSMC 5456 32 - 120 / 12 - 2

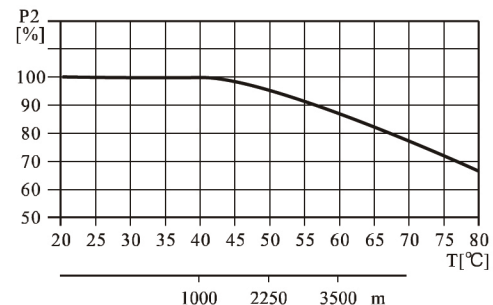


● Operation conditions

- Thin, clean non-explosive liquid without solid grains and fibres; can be used for conveying of water, cooling water solution and cutting lubricating liquid.
- Liquid temperature:
Normal temperature type: -15°C ~ +70°C
Warm water type: -15°C ~ +120°C

● Max. Ambient temperature

When the pump operates under ambient temperature higher than 40°C or under altitude higher than 1000m, because of low air density and poor cooling effects, the motor output power P2 will be decreased to certain extent. If the pump is operated under the above-said conditions, it should be equipped with motor of higher power.

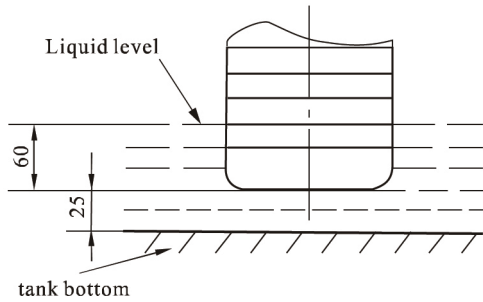


General Data

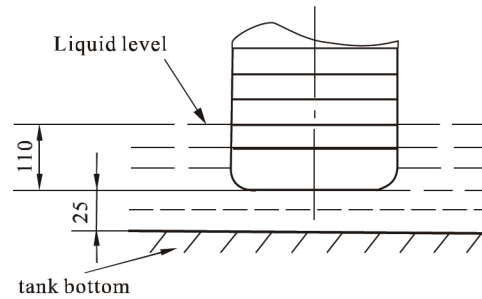
● Installation of pump

The dimensions shown in the below drawing are the minimum installation ones:

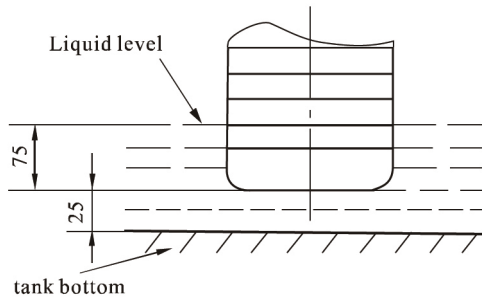
PSMCF 01, 02, 03, 04



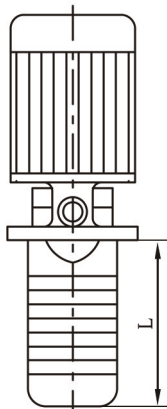
PSMCF 32, 42,



PSMCF 08, 16, 20

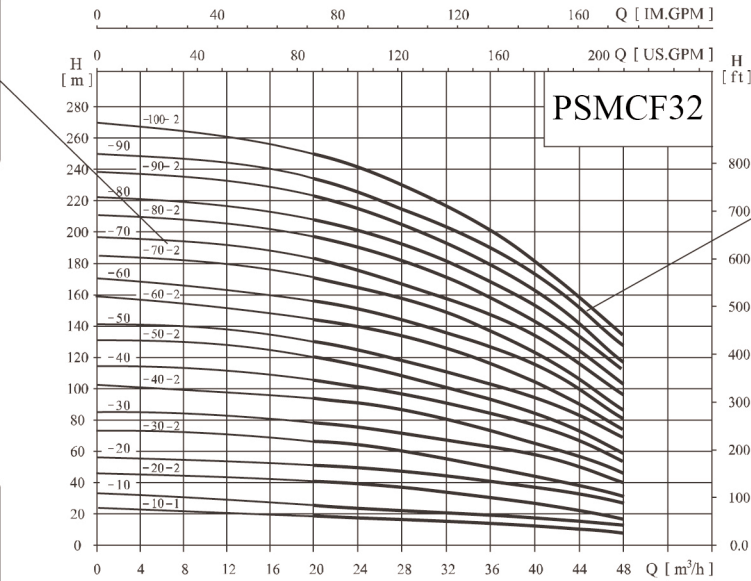


● Installation sketch



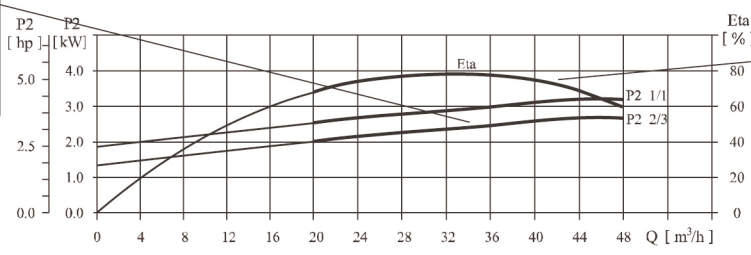
Curve illustration

Stage
 First number:
 Stage × 10
 Second number:
 Number of small impeller

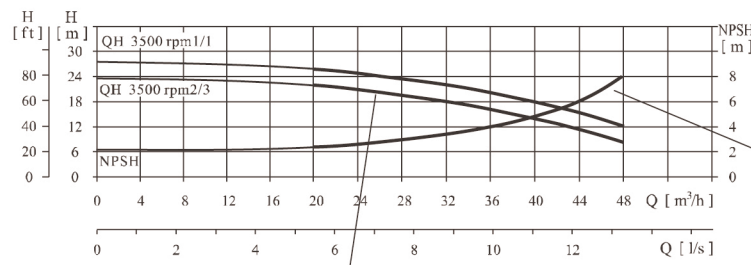


Pump Q-H curve, the thickened line presents recommended performance region

The power curve presents the input power of each stage, which is divided into integrate impeller type(1/1) and the type with small impeller (2/3)



Eta curve presents efficiency of the pump, For the pump equipped with small impeller, its efficiency will be 2% lower than that shown by the curve.



NPSH curve expresses the average value of all curves of this series. A safety margin of 0.5m shall be taken into consideration when making selection.

The Q-H curve of each stage, presenting integrate impeller type(1/1) and the type equipped with small impeller (2/3).

Performance curve

Following conditions are suitable for the performance curves shown bellow:

- 1, All curves are based on the measured values of 60Hz: constant motor speed 3500 rpm or 3540rpm.
- 2, Curve tolerance in conformity with IS09906 Annex A.
- 3, Measurement is done with 20°C air-free water, kinematic

viscosity of 1mm²/sec.

4, The operation of pump shall refer to the performance region indicated by the thickened curve to prevent overheating due to too small flow rate or overload of motor due to too large flow rate.

General Data

Scope of available products

Diagram	Stages	Number of impellers											L (mm)	
		2	3	4	5	6	7	9	11	13	15	18		
PSMCF02 60Hz	20	●												123
	30	○	●											141
	40	○	○	●										159
	50	○	○	○	●									177
	60	○	○	○	○	●								195
	70	○	○	○	○	○	●							213
	90	○	○	○	○	○	○	●						249
	110	○	○	○	○	○	○	○	●					285
	130	○	○	○	○	○	○	○	○	●				321
	150	○	○	○	○	○	○	○	○	○	●			357
	180	○	○	○	○	○	○	○	○	○	○	●		411
	220	○	○	○	○	○	○	○	○	○	○	○	●	483
260	○	○	○	○	○	○	○	○	○	○	○	○	●	555
Motor (kW)		0.55	0.75	1.1	1.5	2.2	3.0	4.0						

Diagram	Stages	Number of impellers																	L (mm)						
		2	3	4	5	6	7	8	9	10	11	12	13	15	17	19	21	23		25					
PSMCF03 60Hz	20	●																			123				
	30	○	●																			141			
	40	○	○	●																		159			
	50	○	○	○	●																	177			
	60	○	○	○	○	●																195			
	70	○	○	○	○	○	●															213			
	80	○	○	○	○	○	○	●														231			
	90	○	○	○	○	○	○	○	●													249			
	100	○	○	○	○	○	○	○	○	●												267			
	110	○	○	○	○	○	○	○	○	○	●											285			
	120	○	○	○	○	○	○	○	○	○	○	●										303			
	130	○	○	○	○	○	○	○	○	○	○	○	●									321			
	150	○	○	○	○	○	○	○	○	○	○	○	○	●								357			
	170	○	○	○	○	○	○	○	○	○	○	○	○	○	●							393			
	190	○	○	○	○	○	○	○	○	○	○	○	○	○	○	●						429			
	210	○	○	○	○	○	○	○	○	○	○	○	○	○	○	○	●					465			
	230	○	○	○	○	○	○	○	○	○	○	○	○	○	○	○	○	●				501			
	250	○	○	○	○	○	○	○	○	○	○	○	○	○	○	○	○	○	●			537			
	270	○	○	○	○	○	○	○	○	○	○	○	○	○	○	○	○	○	○	●		573			
	290	○	○	○	○	○	○	○	○	○	○	○	○	○	○	○	○	○	○	○	●	609			
	310	○	○	○	○	○	○	○	○	○	○	○	○	○	○	○	○	○	○	○	○	●	645		
	330	○	○	○	○	○	○	○	○	○	○	○	○	○	○	○	○	○	○	○	○	○	●	681	
	360	○	○	○	○	○	○	○	○	○	○	○	○	○	○	○	○	○	○	○	○	○	○	●	735
	Motor (kW)		0.37	0.55	0.75	1.1	1.5	2.2	3	4															

Diagram	Stages	Number of impellers										L (mm)		
		2	3	4	5	6	7	8	10	12	14		16	
PSMCF04 60Hz	20	●												148
	30	○	●											175
	40	○	○	●										202
	50	○	○	○	●									229
	60	○	○	○	○	●								256
	70	○	○	○	○	○	●							283
	80	○	○	○	○	○	○	●						310
	100	○	○	○	○	○	○	○	●					364
	120	○	○	○	○	○	○	○	○	●				418
	140	○	○	○	○	○	○	○	○	○	●			472
	160	○	○	○	○	○	○	○	○	○	○	●		526
	190	○	○	○	○	○	○	○	○	○	○	○	●	607
220	○	○	○	○	○	○	○	○	○	○	○	○	●	688
Motor (kW)		0.75	1.1	1.5	2.2	3.0	4.0	5.5						

Diagram	Stages	Number of impellers										L (mm)		
		2	3	4	5	6	8	10	12	14				
PSMCF08 60Hz	20	●												150
	30	○	●											180
	40	○	○	●										210
	50	○	○	○	●									240
	60	○	○	○	○	●								270
	80	○	○	○	○	○	●							330
	100	○	○	○	○	○	○	●						390
	120	○	○	○	○	○	○	○	●					450
	140	○	○	○	○	○	○	○	○	●				510
	160	○	○	○	○	○	○	○	○	○	●			570
	180	○	○	○	○	○	○	○	○	○	○	●		630
	200	○	○	○	○	○	○	○	○	○	○	○	●	690
	Motor (kW)		1.5	2.2	3.0	4.0	5.5	7.5	11					

● Basic Type ○ Available on request

E.g.: pump model: PSMCF-08 - 200/5

● Scope of available products

Diagram	Stages	Number of impellers								L (mm)
		2	3	4	5	6	7	8	10	
PSMCF16 60Hz	20	●								180
	30	○	●							225
	40	○	○	●						270
	50	○	○	○	●					315
	60	○	○	○	○	●				360
	70	○	○	○	○	○	●			405
	80	○	○	○	○	○	○	●		450
	100	○	○	○	○	○	○	○	●	540
	120	○	○	○	○	○	○	○	●	630
	140	○	○	○	○	○	○	○	●	720
160	○	○	○	○	○	○	○	●	810	
Motor (kW)		4	5.5	7.5	11	15	18.5			

Diagram	Stages	Number of impellers								L (mm)
		2	3	4	5	6	7	8	10	
PSMCF20 60Hz	20	●								180
	30	○	●							225
	40	○	○	●						270
	50	○	○	○	●					315
	60	○	○	○	○	●				360
	70	○	○	○	○	○	●			405
	80	○	○	○	○	○	○	●		450
	100	○	○	○	○	○	○	○	●	540
	120	○	○	○	○	○	○	○	●	630
	140	○	○	○	○	○	○	○	●	720
170	○	○	○	○	○	○	○	●	855	
Motor (kW)		4.0	5.5	7.5	11	15	18.5			

Diagram	Stages	Number of impellers										L (mm)
		1	2	3	4	5	6	7	8	9	10	
PSMCF32 60Hz	10	●										186
	20	○	●									256
	30	○	○	●								326
	40	○	○	○	●							396
	50	○	○	○	○	●						466
	60	○	○	○	○	○	●					536
	70	○	○	○	○	○	○	●				606
	80	○	○	○	○	○	○	○	●			676
	90	○	○	○	○	○	○	○	○	●		746
	100	○	○	○	○	○	○	○	○	○	●	816
	110	○	○	○	○	○	○	○	○	○	●	886
	120	○	○	○	○	○	○	○	○	○	●	956
	130	○	○	○	○	○	○	○	○	○	●	1026
	140	○	○	○	○	○	○	○	○	○	●	1096

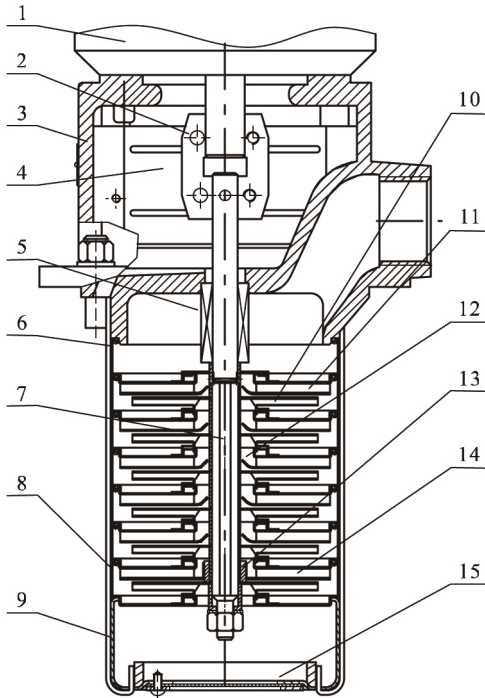
Diagram	Stages	Number of impellers							L (mm)
		1	2	3	4	5	6	7	
PSMCF42 60Hz	10	●							198
	20	○	●						278
	30	○	○	●					358
	40	○	○	○	●				438
	50	○	○	○	○	●			518
	60	○	○	○	○	○	●		598
	70	○	○	○	○	○	○	●	678
	80	○	○	○	○	○	○	●	758
	90	○	○	○	○	○	○	●	838
	100	○	○	○	○	○	○	●	918
	110	○	○	○	○	○	○	●	998
	120	○	○	○	○	○	○	●	1078
	130	○	○	○	○	○	○	●	1158

● Basic Type ○ Available on request

E.g.: pump model: PSMCF-42F-130-3

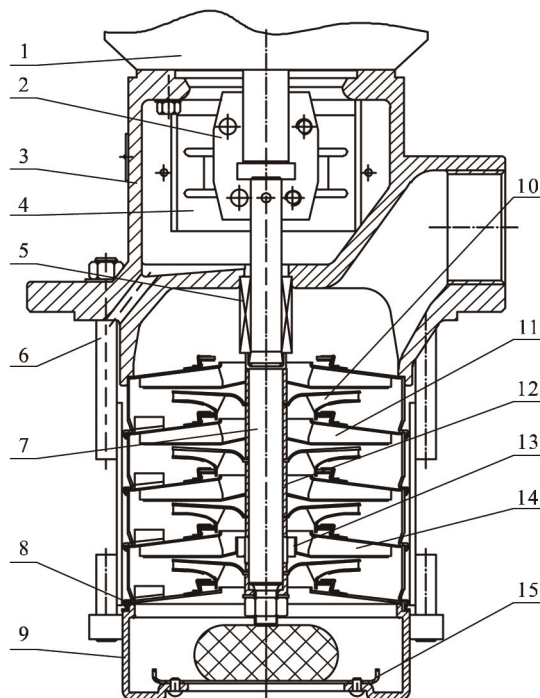
General Data

● Section drawing PSMCF 01, 02, 03, 04 ● Material



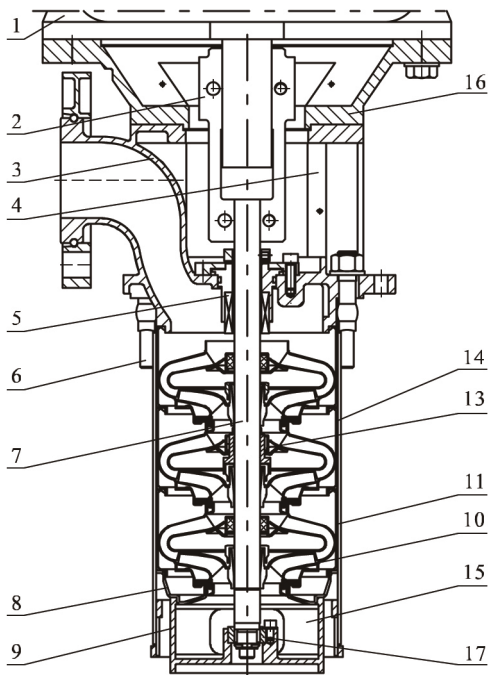
NO.	Name	Material	AISI/ASTM
1	Motor		
2	Coupling	Carbon steel	
4	Coupling guard	Stainless steel	AISI304
5	Mechanical seal		
6	Straps	Stainless steel	AISI304
7	Shaft	Stainless steel	AISI316
8	Inducer	Stainless steel	AISI304
9	Suction head	Stainless steel	AISI304
10	Impeller	Stainless steel	AISI304
11	Diffuser	Stainless steel	AISI304
12	Impeller sleeve	Stainless steel	AISI304
13	Bearing	Tungsten carbide	
14	Support diffuser	Stainless steel	AISI304
15	Strainer	Stainless steel	AISI304
	Rubber parts	FPM	

● Section drawing PSMCF 08, 16, 20



PSMCF			
3	Pump head	Stainless steel	AISI304

Section drawing PSMCF 32, 42



Material

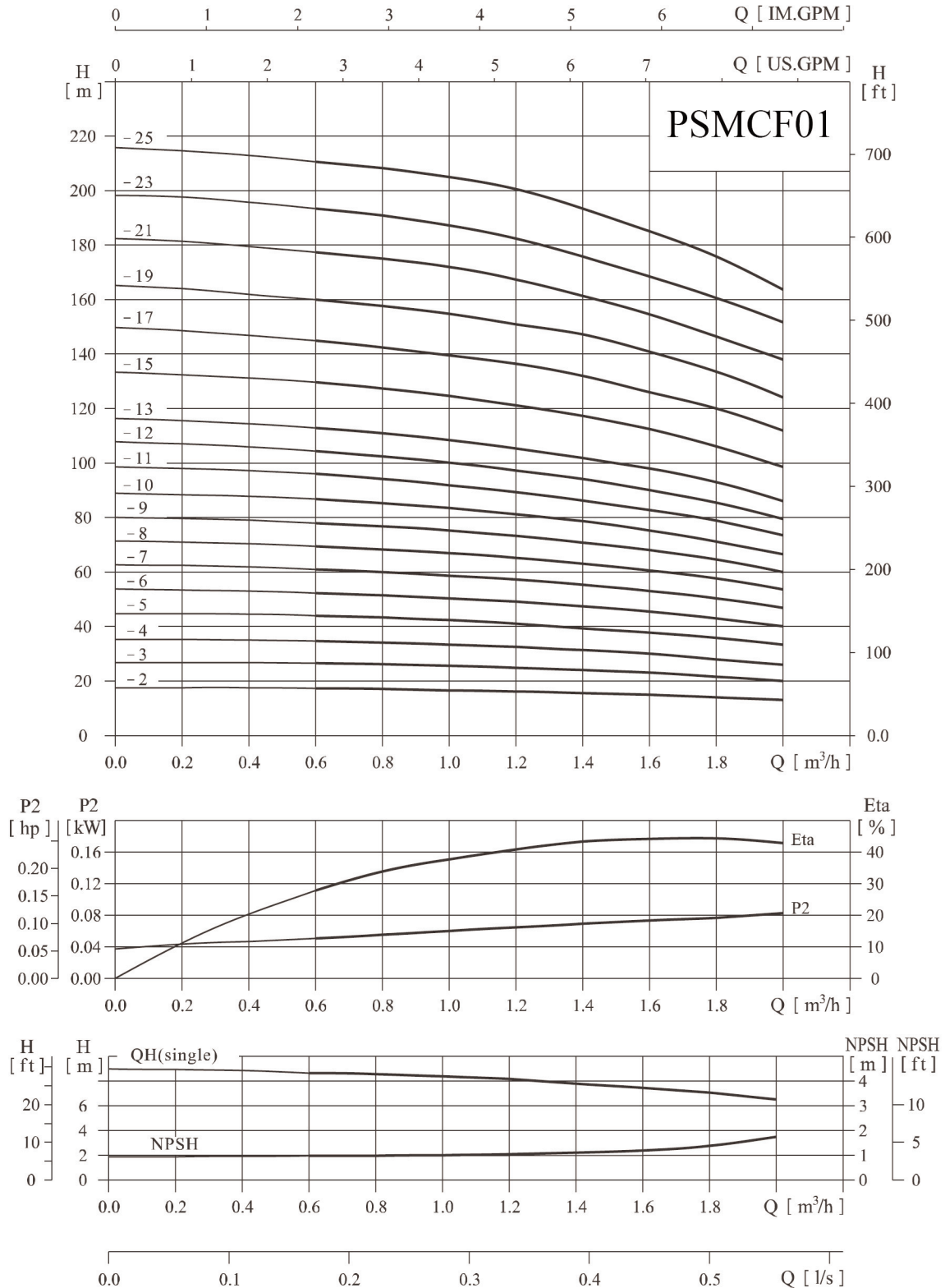
NO.	Name	Material	AISI/ASTM
1	Motor		
2	Coupling	Carbon steel	
4	Coupling guard	Stainless steel	AISI304
5	Mechanical seal		
6	Straps	Stainless steel	AISI304
7	Shaft	Stainless steel	AISI316 AISI304 AISI431
8	Inducer	Stainless steel	AISI304
9	Suction head	Stainless steel	AISI304
10	Impeller	Stainless steel	AISI304
11	Diffuser	Stainless steel	AISI304
13	Bearing	Tungsten carbide	
14	Support diffuser	Stainless steel	AISI304
15	Strainer	Stainless steel	AISI304
16	Crossover flange	Cast iron	ASTM25B
17	Bottom bearing	Tungsten carbide	
	Rubber part	FPM	
PSMC			
3	Pump head	Cast iron	ASTM25B
PSMCF			
3	Pump head	Stainless steel	AISI304

PSMCF01,60 Hz

● Performance curve

ISO9906 Annex A

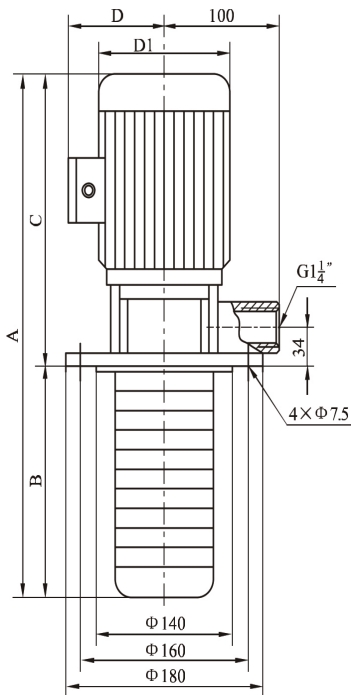
3500rpm



Performance table

Model	Motor		USGPM Q(m3h)	2.64	3.52	4.4	5.28	6.16	7.04	7.92	8.8
	HP	KW		0.6	0.8	1	1.2	1.4	1.6	1.8	2
PSMCF01-20/2	0.5	0.37	feet head	57.4	55.76	54.12	52.48	50.84	49.2	45.92	42.64
			H (meter)	17.5	17	16.5	16	15.5	15	14	13
PSMCF01-30/3	0.5	0.37	feet head	86.92	85.28	82	78.72	75.44	72.16	68.88	65.6
			H (meter)	26.5	26	25	24	23	22	21	20
PSMCF01-40/4	0.5	0.37	feet head	114.8	111.52	108.24	104.96	101.68	98.4	91.84	85.25
			H (meter)	35	34	33	32	31	30	28	26
PSMCF01-50/5	0.75	0.55	feet head	114.8	111.52	108.24	104.96	101.68	98.4	91.84	85.28
			H (meter)	43	42	41	40	39	38	35	33
PSMCF01-60/6	0.75	0.55	feet head	170.56	167.28	164	157.44	154.16	149.56	141.04	127.92
			H (meter)	52	51	50	48	47	44.5	43	39
PSMCF01-70/7	1	0.75	feet head	196.8	193.52	190.24	183.68	180.4	170.56	164	150.88
			H (meter)	60	59	58	56	55	52	50	46
PSMCF01-80/8	1	0.37	feet head	223.04	219.76	213.2	209.92	203.36	193.52	186.96	173.84
			H (meter)	68	67	65	64	62	59	57	53
PSMCF01-90/9	1	0.37	feet head	249.28	246	242.72	239.44	232.88	216.48	209.92	196.8
			H (meter)	76	75	74	73	71	66	64	60
PSMCF01-100/10	1.5	1.1	feet head	278.8	275.52	272.24	265.68	255.84	242.72	236.16	219.76
			H (meter)	85	84	83	81	78	74	72	67
PSMCF01-110/11	1.5	1.1	feet head	311.6	305.04	295.2	285.36	278.8	265.68	255.84	239.44
			H (meter)	95	93	90	87	85	81	78	73
PSMCF01-120/12	1.5	1.1	feet head	337.84	334.56	321.44	314.88	301.76	288.64	282.08	259.12
			H (meter)	103	102	98	96	92	88	86	79
PSMCF01-130/13	1.5	1.1	feet head	367.36	360.8	350.96	344.4	328	311.6	305.04	282.08
			H (meter)	112	110	107	105	100	95	93	86
PSMCF01-150/15	2	1.5	feet head	416.56	410	403.44	396.88	383.76	367.36	350.96	324.75
			H (meter)	127	125	123	121	117	112	107	99
PSMCF01-170/17	2	1.5	feet head	472.32	462.48	455.92	449.36	432.96	406.72	393.6	367.36
			H (meter)	144	141	139	137	132	124	120	112
PSMCF01-190/19	2	2.2	feet head	524.8	514.96	508.4	501.84	482.16	462.48	439.52	406.72
			H (meter)	160	157	155	153	147	141	134	124
PSMCF01-210/21	3	2.2	feet head	580.56	570.72	564.16	551.04	531.36	501.84	482.16	452.64
			H (meter)	177	174	172	168	162	153	147	138
PSMCF01-230/23	3	2.2	feet head	633.04	623.2	616.64	603.52	570.72	547.76	528.08	498.56
			H (meter)	193	190	188	184	174	167	161	152
PSMCF01-250/25	5	3	feet head	688.8	678.96	672.4	662.56	629.76	603.52	577.28	537.92
			H (meter)	210	207	205	202	192	184	176	164

Installation sketch



Size and weight

Model		A	B	C	D	D1	Weight	
							lbs	kgs
PSMCF01-20/2	inches	17.244	4.921	12.402	4.563	5.772	33.069	15
	mm	438	125	315	117	148		
PSMCF01-30/3	inches	17.953	5.551	12.402	4.563	5.772	33.069	15
	mm	456	141	315	117	148		
PSMCF01-40/4	inches	18.661	6.260	12.402	4.563	5.772	33.069	15
	mm	474	159	315	117	148		
PSMCF01-50/5	inches	19.370	6.969	12.402	4.563	5.772	35.274	16
	mm	492	177	315	117	148		
PSMCF01-60/6	inches	20.079	7.677	12.402	4.563	5.772	35.274	16
	mm	510	195	315	117	148		
PSMCF01-70/7	inches	22.480	8.386	14.094	5.538	6.63	41.888	19
	mm	571	213	358	142	170		
PSMCF01-80/8	inches	23.189	9.094	14.094	5.538	6.63	41.888	19
	mm	589	231	358	142	170		
PSMCF01-90/9	inches	23.898	9.803	14.094	5.538	6.63	44.092	20
	mm	607	249	358	142	170		
PSMCF01-100/10	inches	24.606	10.512	14.094	5.538	6.63	48.502	22
	mm	625	267	358	142	170		
PSMCF01-110/11	inches	25.315	11.220	14.094	5.538	6.63	48.502	22
	mm	643	285	358	142	170		
PSMCF01-120/12	inches	26.024	11.929	14.094	5.538	6.63	52.911	24
	mm	661	303	358	142	170		
PSMCF01-130/13	inches	26.732	12.638	14.094	5.538	6.63	52.911	24
	mm	679	321	358	142	170		
PSMCF01-150/15	inches	30.315	14.055	16.260	6.045	7.41	63.934	29
	mm	770	357	413	155	190		
PSMCF01-170/17	inches	31.732	15.472	16.260	6.045	7.41	63.934	29
	mm	806	393	413	155	190		
PSMCF01-190/19	inches	33.150	16.890	16.260	6.045	7.41	72.752	33
	mm	842	429	413	155	190		
PSMCF01-210/21	inches	34.567	18.307	16.260	6.045	7.41	72.752	33
	mm	878	465	413	155	190		
PSMCF01-230/23	inches	35.984	19.724	16.260	6.045	7.41	72.752	33
	mm	914	501	413	155	190		
PSMCF01-250/25	inches	38.780	21.142	17.638	6.435	7.683	88.185	40
	mm	985	537	448	165	197		

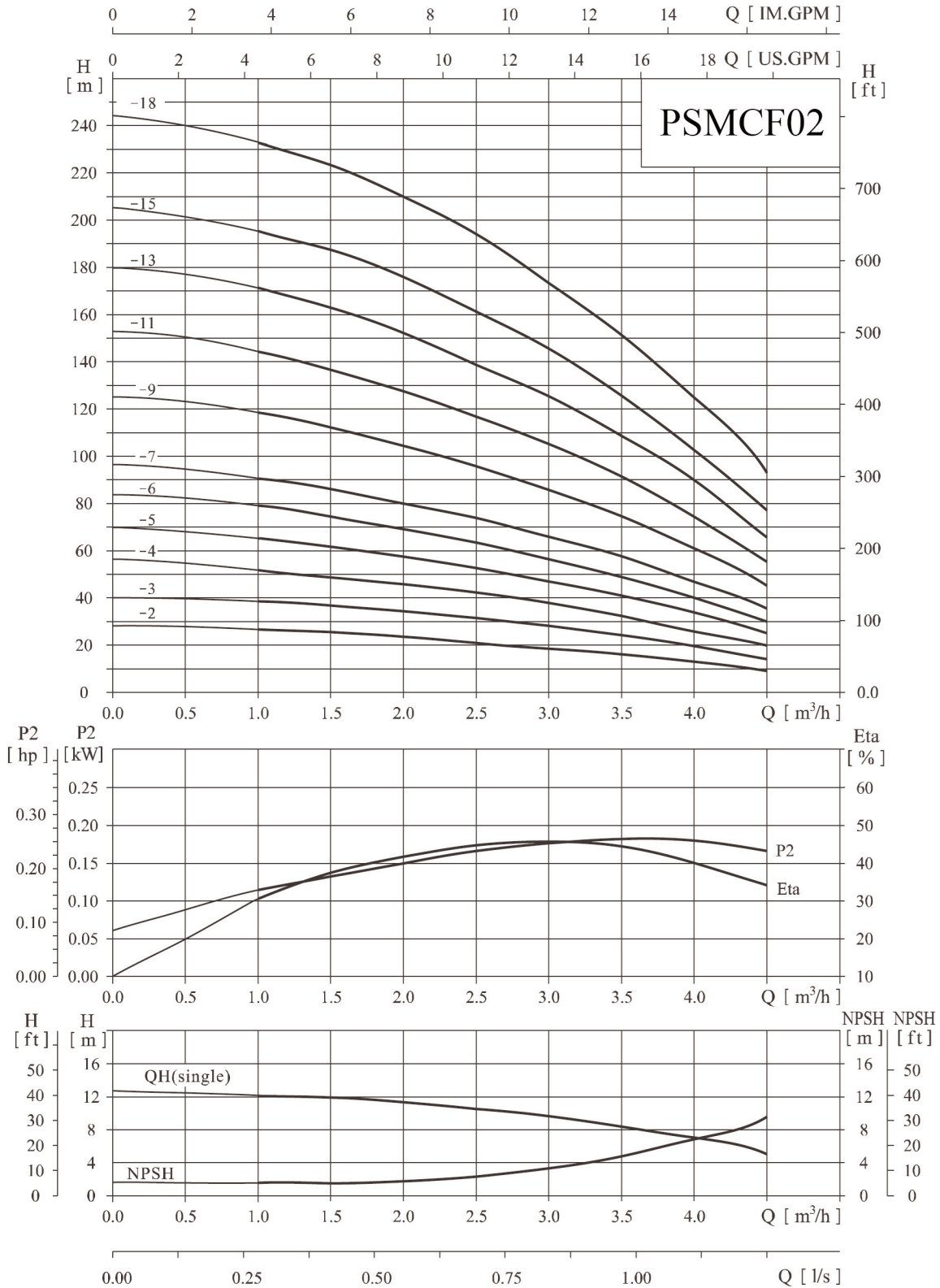
The overall dimensions of the single-phase motor and explosion-proof motor are a little changed. Pls contact us for details.

PSMCF02,60 Hz

● Performance curve

ISO9906 Annex A

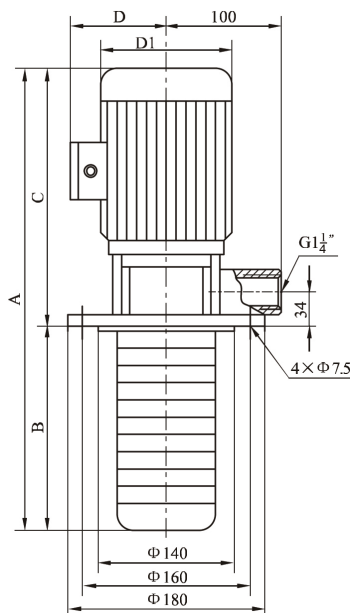
3500rpm



● Performance table

Model	Motor		USGPM	4.4	6.6	8.8	11	13.2	15.4	17.6	19.8
	HP	KW	Q(m3h)	1	1.5	2	2.5	3	3.5	4	4.5
PSMCF02-20/2	0.75	0.55	feet head	85.28	78.72	72.16	68.88	59.04	52.48	39.36	29.52
			H (meter)	26	24	22	21	18	16	12	9
PSMCF02-30/3	1	0.75	feet head	127.92	118.08	108.24	101.68	88.56	78.72	62.32	49.2
			H (meter)	39	36	33	31	27	24	19	15
PSMCF02-40/4	1.5	1.1	feet head	170.56	157.44	147.6	137.76	118.08	104.96	85.28	65.6
			H (meter)	52	48	45	42	36	32	26	20
PSMCF02-50/5	1.5	1.1	feet head	213.2	196.8	186.96	170.56	150.88	134.48	104.96	82
			H (meter)	65	60	57	52	46	41	32	25
PSMCF02-60/6	1.5	1.1	feet head	255.84	242.72	226.32	206.64	183.68	160.72	131.2	98.4
			H (meter)	78	74	69	63	56	49	40	30
PSMCF02-70/7	2	1.5	feet head	298.48	282.08	265.68	242.72	216.48	186.96	154.16	114.8
			H (meter)	91	86	81	74	66	57	47	35
PSMCF02-90/9	3	2.2	feet head	383.76	364.08	341.12	311.6	282.08	246	200.08	147.6
			H (meter)	117	111	104	95	86	75	61	45
PSMCF02-110/11	3	2.2	feet head	469.04	446.08	419.84	380.48	341.12	295.2	246	183.68
			H (meter)	143	136	128	116	104	90	75	56
PSMCF02-130/13	5	3	feet head	560.88	534.64	498.56	455.92	413.28	354.24	295.2	216.48
			H (meter)	171	163	152	139	126	108	90	66
PSMCF02-150/15	5	3	feet head	639.6	610.08	577.28	524.8	465.76	410	337.84	252.56
			H (meter)	195	186	176	160	142	125	103	77
PSMCF02-180/18	5	4	feet head	767.52	747.84	695.36	639.6	560.88	495.28	413.28	308.32
			H (meter)	234	228	212	195	171	151	126	94

● Installation sketch



● Size and weight

Model							Weight	
		A	B	C	D	D1	lbs	kgs
PSMCF02-20/2	inches	17,244	4,843	12,402	4,563	5,772	33.069	15
	mm	438	123	315	117	148		
PSMCF02-30/3	inches	19,646	5,551	14,094	5,538	6,66	39.683	18
	mm	499	141	358	142	170		
PSMCF02-40/4	inches	20,354	6,260	14,094	5,538	6,66	44.092	20
	mm	517	159	358	142	170		
PSMCF02-50/5	inches	21,063	6,969	14,094	5,538	6,66	44.092	20
	mm	535	177	358	142	170		
PSMCF02-60/6	inches	21,772	7,677	14,094	5,538	6,66	48.502	22
	mm	553	195	358	142	170		
PSMCF02-70/7	inches	24,646	8,386	16,260	6,045	7,41	59.524	27
	mm	626	213	413	155	190		
PSMCF02-90/9	inches	26,063	9,803	16,260	6,045	7,41	68.343	31
	mm	662	249	413	155	190		
PSMCF02-110/11	inches	27,480	11,220	16,260	6,045	7,41	68.343	31
	mm	698	285	413	155	190		
PSMCF02-130/13	inches	30,276	12,638	17,638	6,435	7,683	81.570	37
	mm	769	321	448	165	197		
PSMCF02-150/15	inches	31,693	14,055	17,638	6,435	7,683	81.570	37
	mm	805	357	448	165	197		
PSMCF02-180/18	inches	34,606	16,181	18,425	7,332	8,97	92.594	42
	mm	879	411	468	188	230		

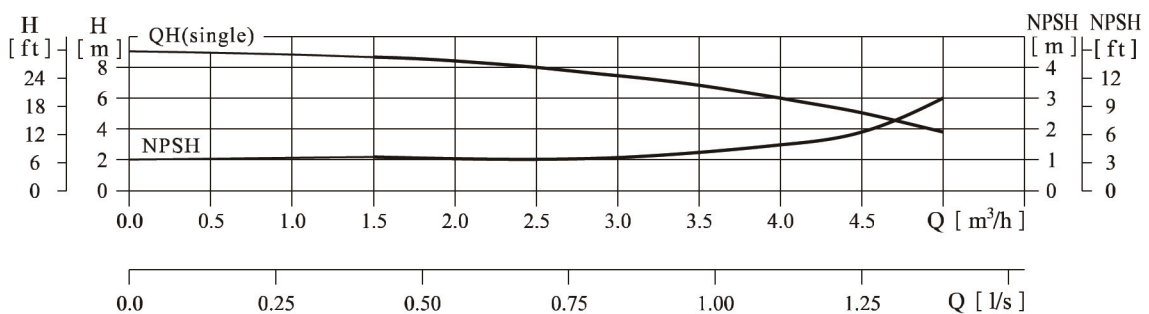
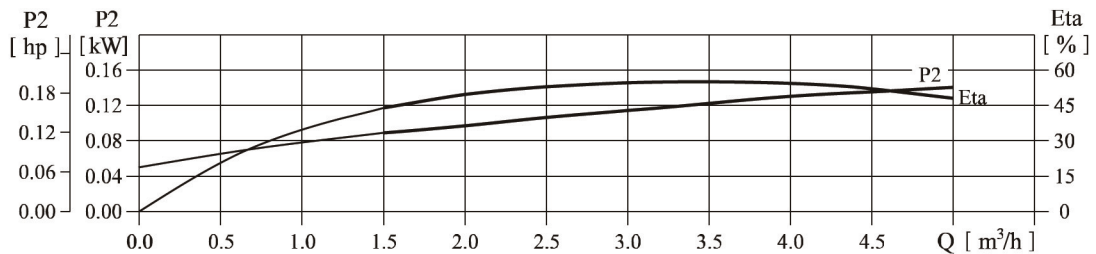
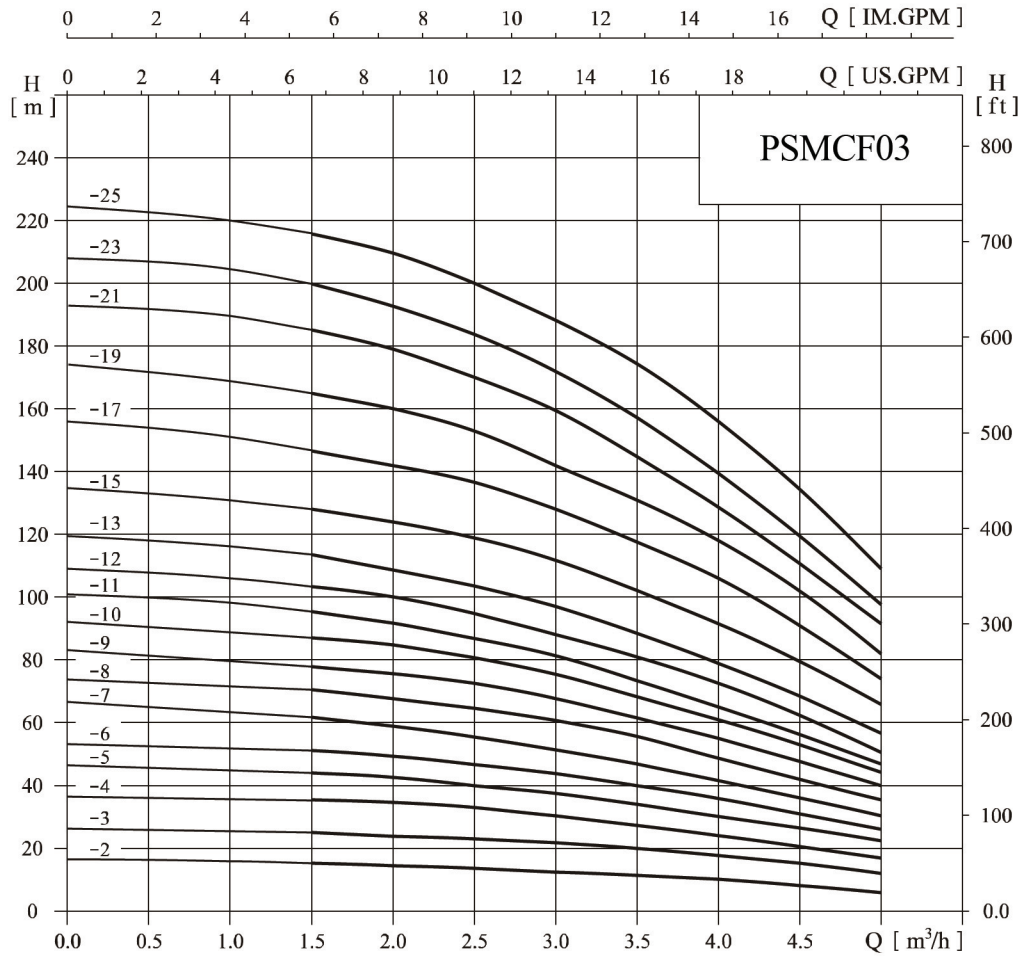
The overall dimensions of the single-phase motor and explosion-proof motor are a little changed. Pls contact us for details.

PSMCF03,60 Hz

● Performance curve

ISO9906 Annex A

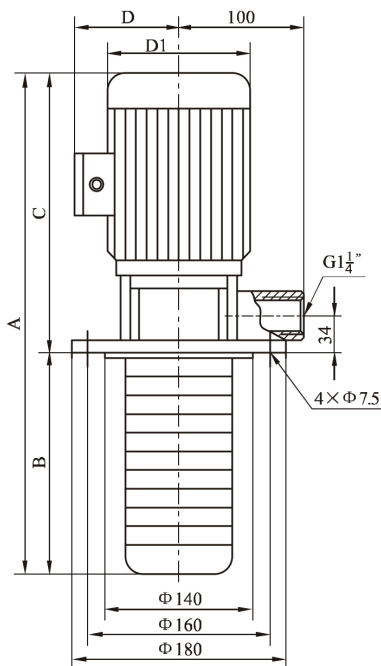
3500rpm



● Performance table

Model	Driving motor		Q (m ³ /h)	1.5	2	2.5	3	3.5	4	4.5	5
	(kW)	(hp)									
CDLK3-20/2	0.37	0.5	H (m)	17.5	16	15	14	13	11	9	8
CDLK3-30/3	0.55	0.75		26.5	25	24	23	20	18	15	12
CDLK3-40/4	0.55	0.75		35	34	32	30	27	25	20	17
CDLK3-50/5	0.75	1		44	42	40	38	33	31	26	23
CDLK3-60/6	1.1	1.5		51	50	48	45	40	37	32	27
CDLK3-70/7	1.1	1.5		61	59	56	52	46	43	38	31
CDLK3-80/8	1.1	1.5		70	67	64	61	53	49	44	35
CDLK3-90/9	1.5	2		78	77	72	68	60	56	50	40
CDLK3-100/10	1.5	2		87	84	81	76	68	63	55	44
CDLK3-110/11	1.5	2		96	92	87	82	74	69	59	48
CDLK3-120/12	2.2	3		104	100	96	90	79	73	63	52
CDLK3-130/13	2.2	3		112	109	104	98	86	80	69	57
CDLK3-150/15	2.2	3		129	126	120	112	99	93	81	65
CDLK3-170/17	2.2	3		147	143	137	128	114	106	91	74
CDLK3-190/19	3	4		165	160	153	142	126	118	102	82
CDLK3-210/21	3	4		183	178	170	160	141	129	112	91
CDLK3-230/23	3	4		200	194	185	174	154	142	122	98
CDLK3-250/25	4	5.5	217	211	202	187	167	154	134	108	

● Installation sketch



● Size and weight

Model		A	B	C	D	D1	Weight	
							lbs	kgs
PSMCF03-20/2	inches	17.244	4.921	12.402	4.563	5.772	33.069	15
	mm	438	125	315	117	148		
PSMCF03-30/3	inches	17.953	5.551	12.402	4.563	5.772	33.069	15
	mm	456	141	315	117	148		
PSMCF03-40/4	inches	18.661	6.260	12.402	4.563	5.772	33.069	15
	mm	474	159	315	117	148		
PSMCF03-50/5	inches	21.063	6.969	14.094	5.538	6.63	41.888	19
	mm	535	177	358	142	170		
PSMCF03-60/6	inches	21.772	7.677	14.094	5.538	6.63	46.297	21
	mm	553	195	358	142	170		
PSMCF03-70/7	inches	22.480	8.386	14.094	5.538	6.63	48.502	22
	mm	571	213	358	142	170		
PSMCF03-80/8	inches	23.189	9.094	14.094	5.538	6.63	48.502	22
	mm	589	231	358	142	170		
PSMCF03-90/9	inches	26.063	9.803	16.260	6.045	7.41	59.525	27
	mm	662	249	413	155	190		
PSMCF03-100/10	inches	26.772	10.512	16.260	6.045	7.41	61.729	28
	mm	680	267	413	155	190		
PSMCF03-110/11	inches	27.480	11.220	16.260	6.045	7.41	61.729	28
	mm	698	285	413	155	190		
PSMCF03-120/12	inches	28.189	11.929	16.260	6.045	7.41	68.343	31
	mm	716	303	413	155	190		
PSMCF03-130/13	inches	28.898	12.638	16.260	6.045	7.41	68.343	31
	mm	734	321	413	155	190		
PSMCF03-150/15	inches	30.315	14.055	16.260	6.045	7.41	70.548	32
	mm	770	357	413	155	190		
PSMCF03-170/17	inches	31.732	15.472	16.260	6.045	7.41	70.548	32
	mm	806	393	413	155	190		
PSMCF03-190/19	inches	34.527	16.890	17.638	6.435	7.683	81.571	37
	mm	877	429	448	165	197		
PSMCF03-210/21	inches	35.945	18.307	17.638	6.435	7.683	83.776	38
	mm	913	465	448	165	197		
PSMCF03-230/23	inches	37.362	19.724	17.638	6.435	7.683	83.776	38
	mm	949	501	448	165	197		
PSMCF03-250/25	inches	39.567	21.142	18.425	7.332	8.97	97.003	44
	mm	1005	537	468	188	230		

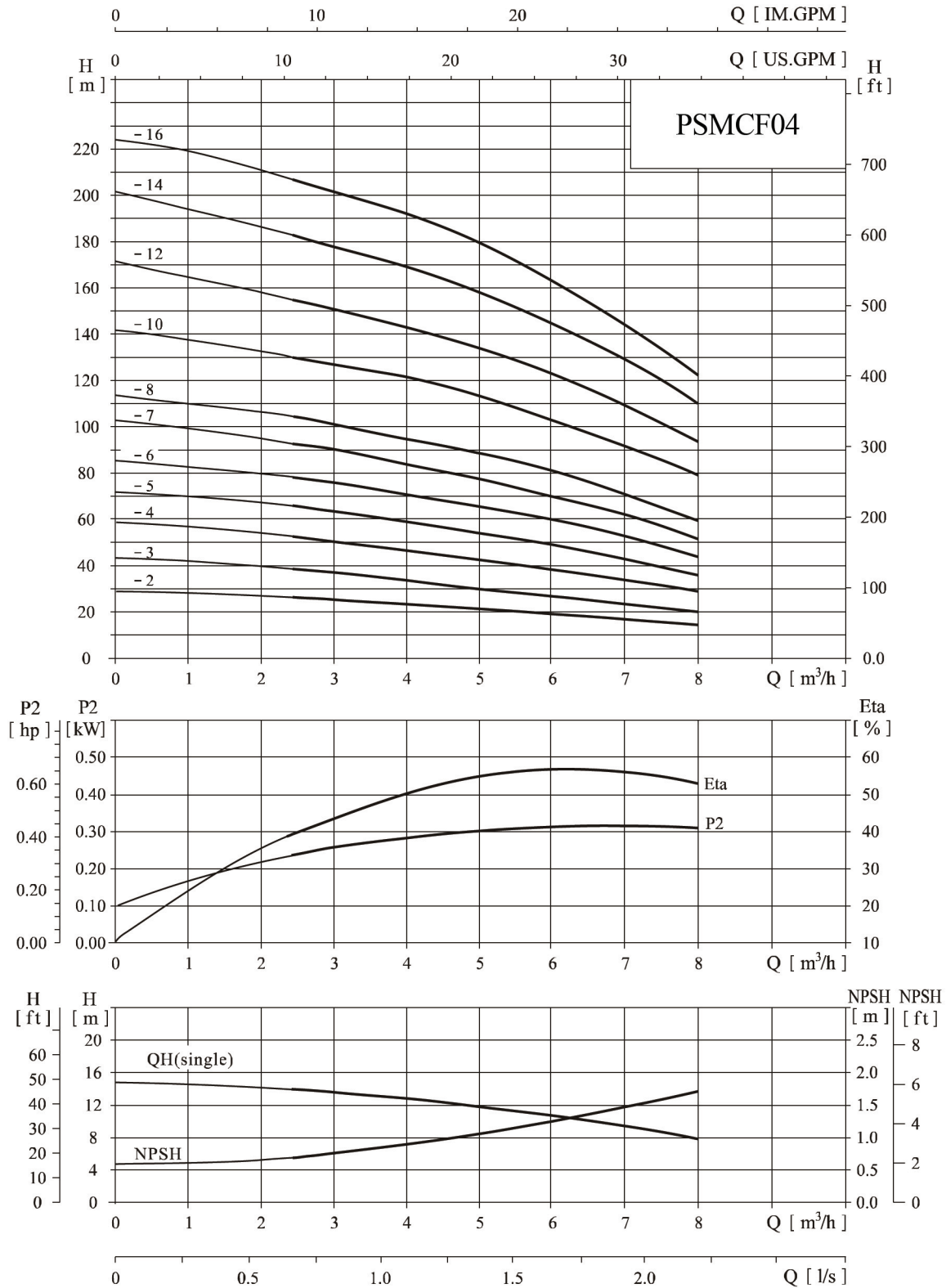
The overall dimensions of the single-phase motor and explosion-proof motor are a little changed. Pls contact us for details.

PSMCF04,60 Hz

● Performance curve

ISO9906 Annex A

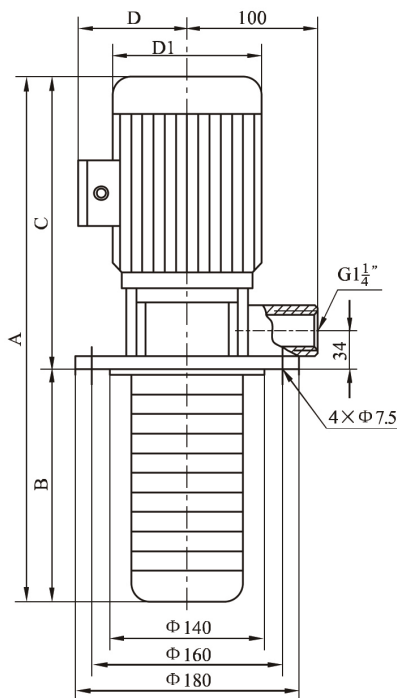
3500rpm



● Performance table

Model	Driving motor		Q (m ³ /h)	2.5	3	4	5	6	7	8
	(kW)	(hp)								
CDLK4-20/2	0.75	1	H (m)	26	25	23	21	19	16	14
CDLK4-30/3	1.1	1.5		39	38	36	32	28	24	21
CDLK4-40/4	1.5	2		52	50	48	44	38	35	31
CDLK4-50/5	2.2	3		65	62	60	55	49	44	39
CDLK4-60/6	2.2	3		78	75	72	67	59	54	47
CDLK4-70/7	3	4		92	88	84	78	69	62	55
CDLK4-80/8	3	4		104	100	95	90	79	72	63
CDLK4-100/10	4	5.5		130	125	120	113	102	90	80
CDLK4-120/12	4	5.5		156	150	145	136	122	109	96
CDLK4-140/14	5.5	7.5		182	176	170	159	145	129	112
CDLK4-160/16	5.5	7.5		207	201	196	183	165	146	128

● Installation sketch



● Size and weight

Model							Weight	
		A	B	C	D	D1	lbs	kgs
PSMCF04-20/2	inches	19.921	5.827	14.094	5.54	6.63	33.069	15
	mm	506	148	358	142	170		
PSMCF04-30/3	inches	20.984	6.890	14.094	5.54	6.63	39.683	18
	mm	533	175	358	142	170		
PSMCF04-40/4	inches	24.212	7.953	16.260	6.05	7.41	50.706	23
	mm	615	202	413	155	190		
PSMCF04-50/5	inches	25.276	9.016	16.260	6.05	7.41	59.525	27
	mm	642	229	413	155	190		
PSMCF04-60/6	inches	26.339	10.079	16.260	6.05	7.41	59.525	27
	mm	669	256	413	155	190		
PSMCF04-70/7	inches	28.780	11.142	17.638	6.44	7.68	72.752	33
	mm	731	283	448	165	197		
PSMCF04-80/8	inches	29.842	12.205	17.638	6.44	7.68	72.752	33
	mm	758	310	448	165	197		
PSMCF04-100/10	inches	32.756	14.331	18.425	7.33	8.97	83.776	38
	mm	832	364	468	188	230		
PSMCF04-120/12	inches	34.882	16.457	18.425	7.33	8.97	83.776	38
	mm	886	418	468	188	230		
PSMCF04-140/14	inches	41.535	18.583	22.953	8.11	19.14	138.891	63
	mm	1055	472	583	208	260		
PSMCF04-160/16	inches	43.661	20.709	22.953	8.11	19.14	143.300	65
	mm	1109	526	583	208	260		

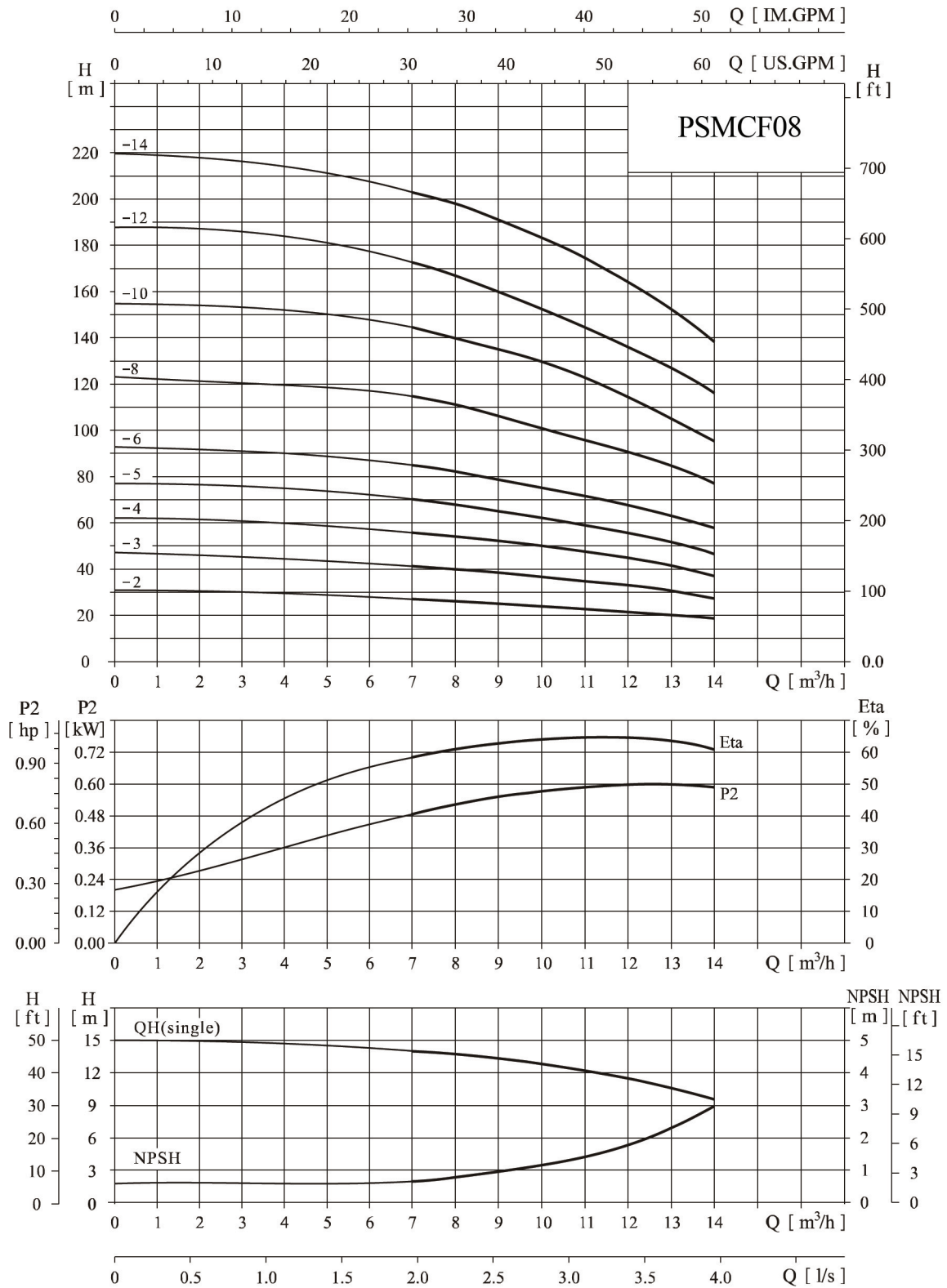
The overall dimensions of the single-phase motor and explosion-proof motor are a little changed. Pls contact us for details.

PSMCF08,60 Hz

● Performance curve

ISO9906 Annex A

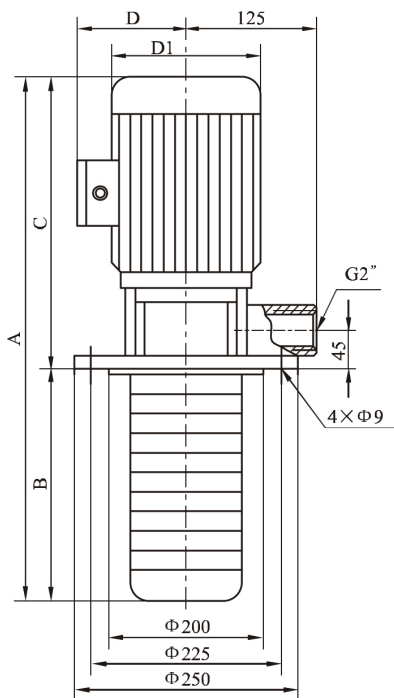
3500rpm



● Performance table

Model	Driving motor		Q (m ³ /h)	7	8	9	10	11	12	13	14
	(kW)	(hp)									
CDLK8-20/2	1.5	2	H (m)	27	26	25	24	23	22	20	18
CDLK8-30/3	2.2	3		41	40	38	37	35	33	30	28
CDLK8-40/4	3	4		55	54	52	50	47	45	41	38
CDLK8-50/5	3	4		70	68	65	63	59	56	52	47
CDLK8-60/6	4	5.5		85	82	78	76	72	68	62	57
CDLK8-80/8	5.5	7.5		115	110	105	101	97	91	84	75
CDLK8-100/10	7.5	10		145	140	132	126	122	115	105	95
CDLK8-120/12	7.5	10		173	167	160	152	147	132	125	115
CDLK8-140/14	11	15		202	195	188	179	174	163	147	135

● Installation sketch



● Size and weight

Model		A	B	C	D	D1	Weight	
							lbs	kgs
PSMCF08-20/2	inches	22.402	5.905	16.496	6.05	7.41	70.4	32
	mm	569	150	419	155	190		
PSMCF08-30/3	inches	23.582	7.09	16.496	6.05	7.41	81.4	37
	mm	599	180	419	155	190		
PSMCF08-40/4	inches	26.142	8.268	17.873	6.44	7.68	99.2	45
	mm	664	210	454	165	197		
PSMCF08-50/5	inches	27.322	9.449	17.874	6.44	7.68	103.4	47
	mm	694	240	454	165	197		
PSMCF08-60/6	inches	29.29	10.630	18.661	7.33	8.97	114.6	52
	mm	744	270	474	188	230		
PSMCF08-80/8	inches	36.181	12.992	23.189	8.11	10.14	158.7	72
	mm	919	330	589	208	260		
PSMCF08-100/10	inches	38.543	15.354	23.189	8.11	10.14	172	78
	mm	979	390	589	208	260		
PSMCF08-120/12	inches	40.905	17.716	23.189	8.11	10.14	176.4	80
	mm	1039	450	589	208	260		
PSMCF08-140/14	inches	47.244	20.079	27.165	9.95	12.87	297.6	135
	mm	1200	510	690	255	330		

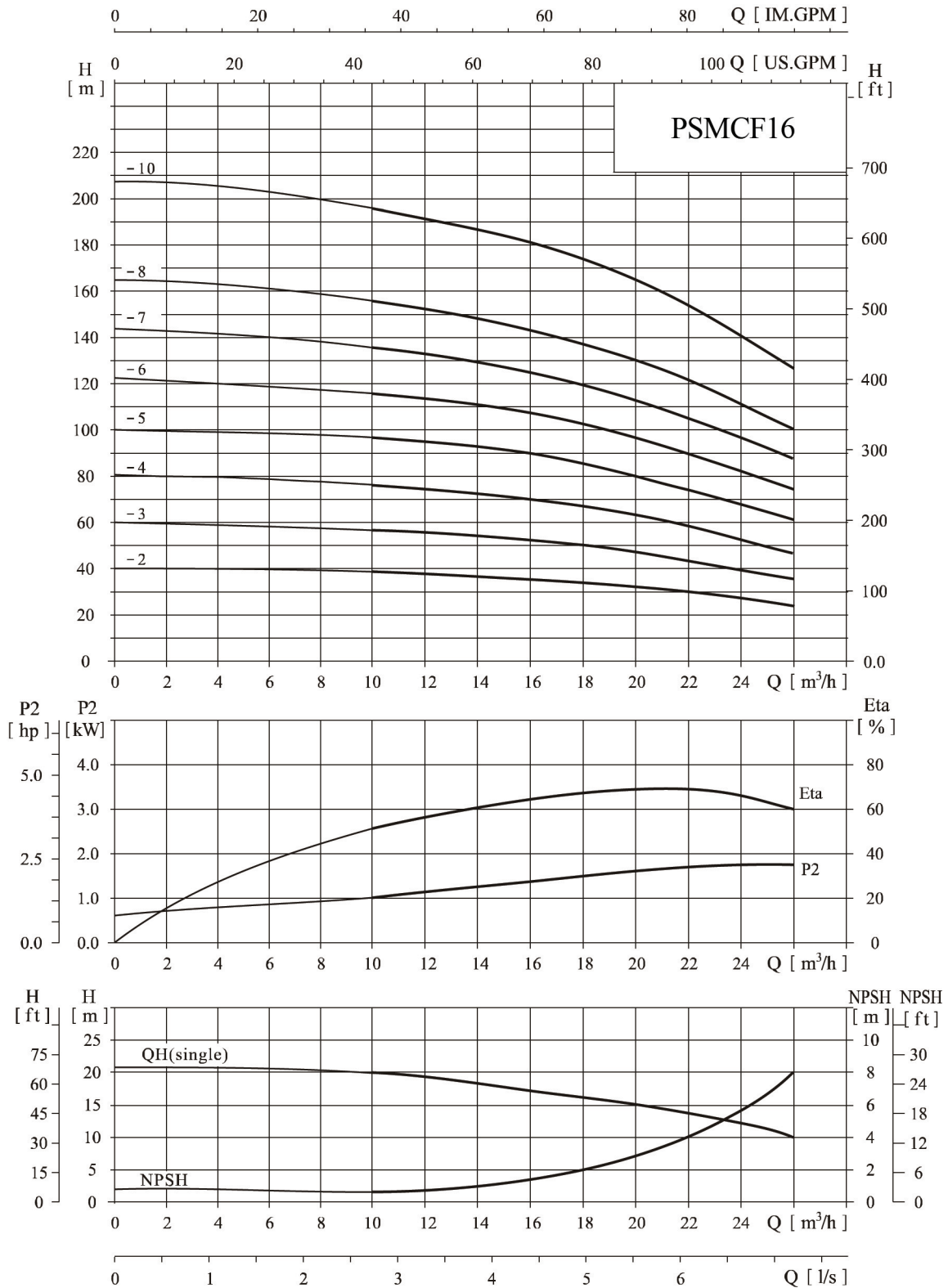
The overall dimensions of the single-phase motor and explosion-proof motor are a little changed. Pls contact us for details.

PSMCF16,60 Hz

● Performance curve

ISO9906 Annex A

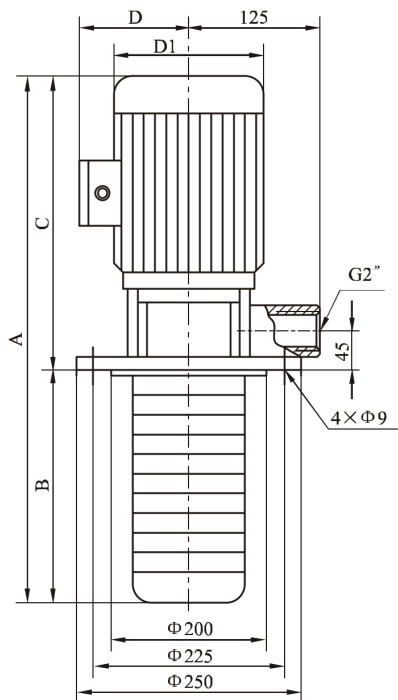
3500rpm



● Performance table

Model	Driving motor		Q (m ³ /h)	10	12	14	16	18	20	22	24	26
	(kW)	(hp)										
CDLK16-20/2	4	5.5	H (m)	38	37	36	35	34	32	30	27	24
CDLK16-30/3	5.5	7.5		57	56	55	54	51	48	45	40	36
CDLK16-40/4	7.5	10		76	75	73	72	68	64	60	54	49
CDLK16-50/5	11	15		96	94	92	90	85	80	75	68	62
CDLK16-60/6	11	15		115	113	111	108	102	96	91	82	75
CDLK16-70/7	15	20		135	132	129	126	119	113	106	96	88
CDLK16-80/8	15	20		155	152	148	144	137	130	122	111	101
CDLK16-100/10	18.5	25		195	192	187	181	174	165	153	139	127

● Installation sketch



● Size and weight

Model		A	B	C	D	D1	Weight	
							lbs	kgs
PSMCF16-20/2	inches	25.748	7.09	18.661	7.332	8.97	110.2	50
	mm	654	180	474	188	230		
PSMCF16-30/3	inches	32.047	10	23.189	8.112	10.14	143.3	65
	mm	814	225	589	208	260		
PSMCF16-40/4	inches	33.819	10.630	23.189	8.112	10.14	165.3	75
	mm	859	270	589	208	260		
PSMCF16-50/5	inches	39.567	12.401	27.165	9.945	12.87	286.6	130
	mm	1005	315	690	255	330		
PSMCF16-60/6	inches	41.338	14.173	27.165	9.945	12.87	291	132
	mm	1050	360	690	255	330		
PSMCF16-70/7	inches	43.110	15.945	27.165	9.945	12.87	308.6	140
	mm	1095	405	690	255	330		
PSMCF16-80/8	inches	44.881	17.716	27.165	9.945	12.87	308.6	140
	mm	1140	450	690	255	330		
PSMCF16-100/10	inches	50.787	21.260	29.527	9.945	12.87	330.7	150
	mm	1290	540	750	255	330		

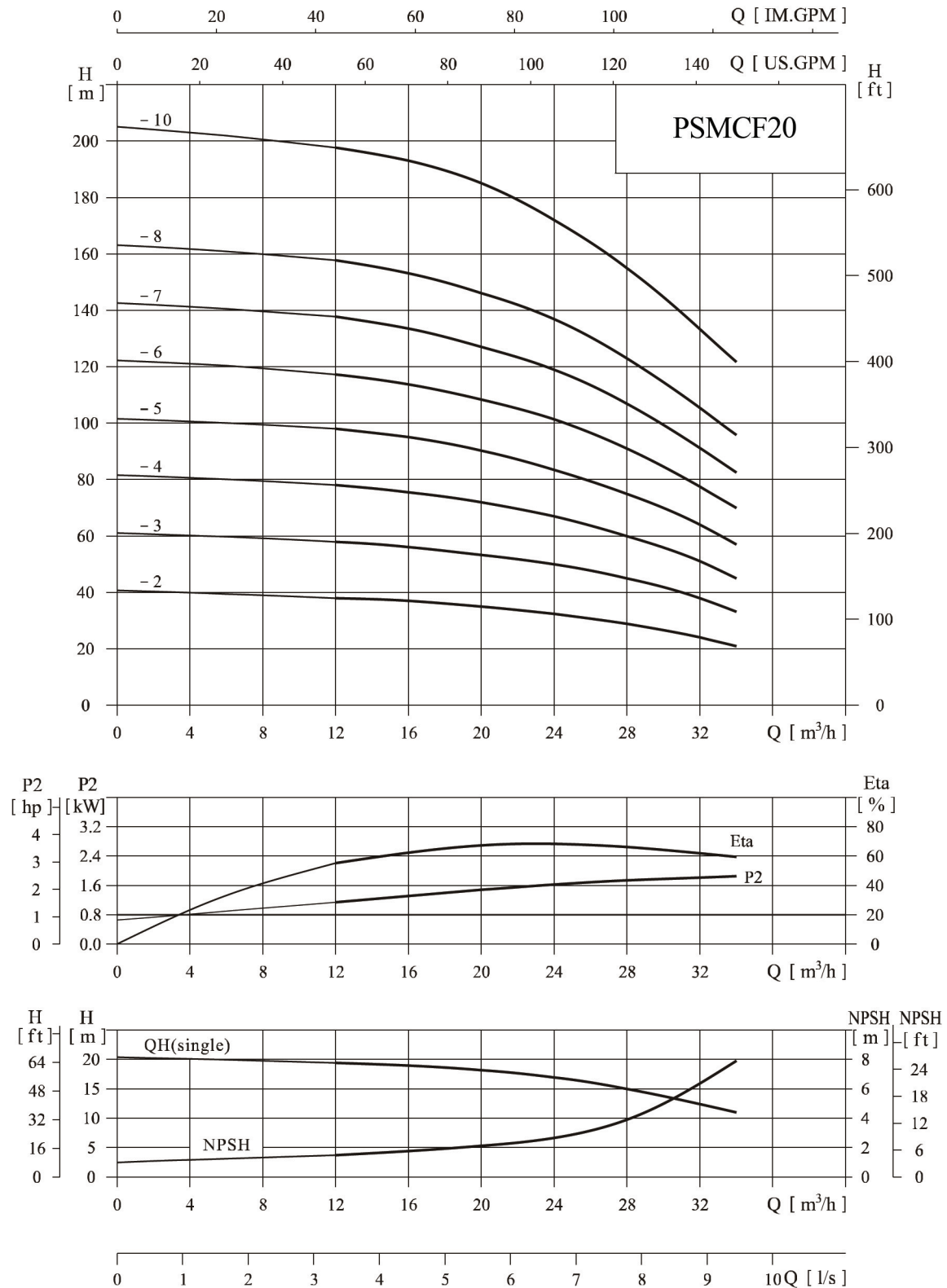
The overall dimensions of the single-phase motor and explosion-proof motor are a little changed. Pls contact us for details.

PSMCF20,60 Hz

● Performance curve

ISO9906 Annex A

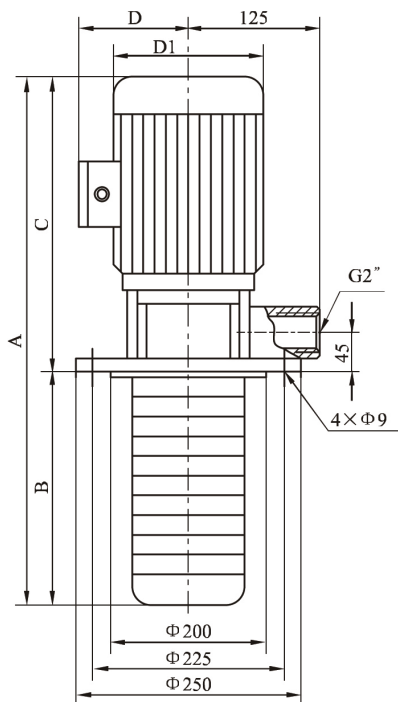
3500rpm



● Performance table

Model	Driving motor		Q (m ³ /h)	12	16	20	24	28	32	34
	(kW)	(hp)								
CDLK20-20/2	4	5.5	H (m)	38	37	35	32	29	24	21
CDLK20-30/3	5.5	7.5		58	56	53	50	45	38	33
CDLK20-40/4	7.5	10		78	75	72	67	60	51	45
CDLK20-50/5	11	15		98	94	90	85	75	64	57
CDLK20-60/6	11	15		118	113	108	102	91	77	70
CDLK20-70/7	15	20		138	133	127	119	107	91	83
CDLK20-80/8	15	20		158	153	146	137	123	105	96
CDLK20-100/10	18.5	25		198	193	185	172	155	133	122

● Installation sketch



● Size and weight

Model		A	B	C	D	D1	Weight	
							lbs	kgs
PSMCF20-20/2	inches	25.748	7.09	18.661	7.332	8.97	110.2	50
	mm	654	180	474	188	230		
PSMCF20-30/3	inches	32.047	10	23.189	8.112	10.14	143.3	65
	mm	814	225	589	208	260		
PSMCF20-40/4	inches	33.819	10.630	23.189	8.112	10.14	165.3	75
	mm	859	270	589	208	260		
PSMCF20-50/5	inches	39.567	12.401	27.165	9.945	12.87	286.6	130
	mm	1005	315	690	255	330		
PSMCF20-60/6	inches	41.338	14.173	27.165	9.945	12.87	291	132
	mm	1050	360	690	255	330		
PSMCF20-70/7	inches	43.110	15.945	27.165	9.945	12.87	308.6	140
	mm	1095	405	690	255	330		
PSMCF20-80/8	inches	44.881	17.716	27.165	9.945	12.87	308.6	140
	mm	1140	450	690	255	330		
PSMCF20-100/10	inches	50.787	21.260	29.527	9.945	12.87	330.7	150
	mm	1290	540	750	255	330		

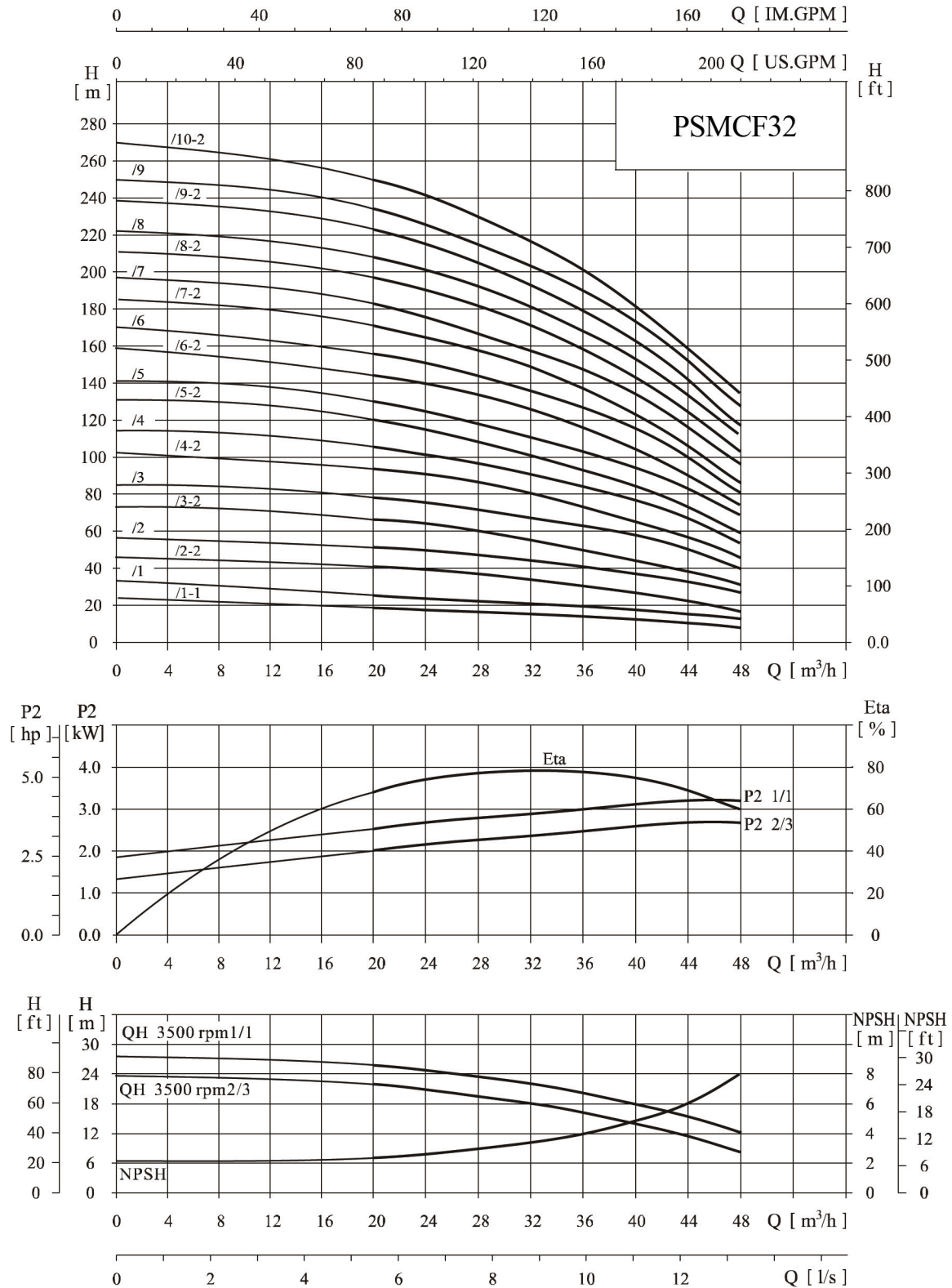
The overall dimensions of the single-phase motor and explosion-proof motor are a little changed. Pls contact us for details.

PSMCF32,60 Hz

● Performance curve

ISO9906 Annex A

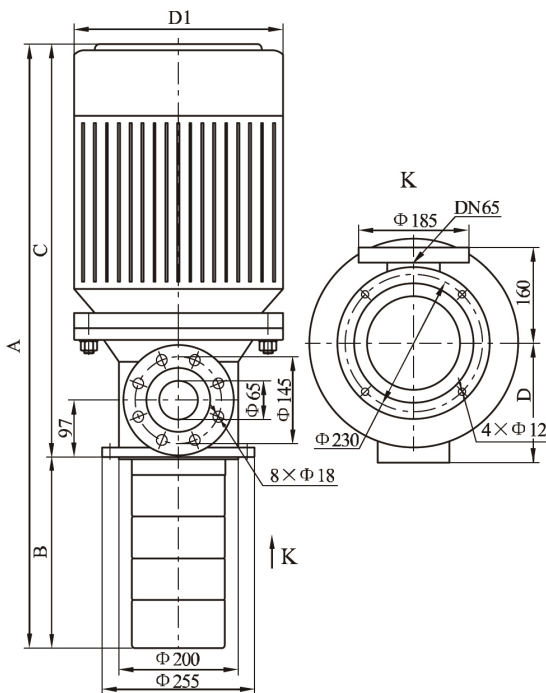
3500rpm



● Performance curve

Model	Driving motor		Q (m ³ /h)	H (m)							
	(kW)	(hp)		20	24	28	32	36	40	44	48
CDLK32-10/1-1	3.0	4	20	19	18	17	15	13	10	7	
CDLK32-10/1	4.0	5.5	26	25	24	23	21	19	17	14	
CDLK32-20/2-2	5.5	7.5	41	40	38	35	31	27	22	17	
CDLK32-20/2	7.5	10	52	50	48	45	41	37	33	27	
CDLK32-30/3-2	7.5	10	67	64	61	57	52	46	39	31	
CDLK32-30/3	11	15	78	75	71	67	62	56	50	40	
CDLK32-40/4-2	11	15	94	91	87	81	73	65	56	45	
CDLK32-40/4	15	20	104	101	96	91	83	75	66	55	
CDLK32-50/5-2	15	20	119	115	109	102	94	84	73	59	
CDLK32-50/5	18.5	25	130	125	119	112	104	94	83	69	
CDLK32-60/6-2	18.5	25	145	140	134	126	116	104	90	74	
CDLK32-60/6	18.5	25	155	150	144	136	126	114	100	81	
CDLK32-70/7-2	22	30	172	166	158	149	137	123	106	86	
CDLK32-70/7	22	30	182	176	168	159	148	133	118	97	
CDLK32-80/8-2	22	30	196	190	182	172	159	143	124	102	
CDLK32-80/8	30	40	208	201	192	181	167	152	132	111	
CDLK32-90/9-2	30	40	223	216	206	194	179	162	142	117	
CDLK32-90/9	30	40	234	226	216	204	189	172	152	127	
CDLK32-100/10-2	30	40	248	241	231	217	201	181	159	133	

● Installation sketch



● Size and weight

Model	Dimensions					Weight		
	A	B	C	D	D1	lbs	kg	
PSMCF32-10/1-1	Inches	25.43	7.32	18.11	6.435	7.683	143	65
	mm	646	186	460	165	197		
PSMCF32-10/1	Inches	26.22	7.32	18.90	7.332	8.97	165	75
	mm	666	186	480	188	230		
PSMCF32-20/2-2	Inches	33.50	10.08	23.43	8.112	10.14	187	85
	mm	851	256	595	208	260		
PSMCF32-20/2	Inches	33.50	10.08	23.43	8.112	10.14	209	95
	mm	851	256	595	208	260		
PSMCF32-30/3-2	Inches	36.26	13.83	23.43	9.945	12.87	220	100
	mm	921	326	595	255	330		
PSMCF32-30/3	Inches	40.71	13.83	27.87	9.945	12.87	330	150
	mm	1034	326	708	255	330		
PSMCF32-40/4-2	Inches	43.46	15.59	27.87	9.945	12.87	341	155
	mm	1104	396	708	255	330		
PSMCF32-40/4	Inches	43.46	15.59	27.87	9.945	12.87	407	185
	mm	1104	396	708	255	330		
PSMCF32-50/5-2	Inches	46.22	18.35	27.87	9.945	12.87	429	195
	mm	1174	466	708	255	330		
PSMCF32-50/5	Inches	46.22	18.35	30.24	9.945	12.87	473	215
	mm	1174	466	768	255	330		
PSMCF32-60/6-2	Inches	51.34	21.10	30.24	9.945	12.87	495	225
	mm	1304	536	768	255	330		
PSMCF32-60/6	Inches	51.34	21.10	30.24	9.945	12.87	495	225
	mm	1304	536	768	255	330		
PSMCF32-70/7-2	Inches	55.67	23.86	31.81	11.115	14.04	572	260
	mm	1414	606	808	285	360		
PSMCF32-70/7	Inches	55.67	23.86	31.81	11.115	14.04	572	260
	mm	1414	606	808	285	360		
PSMCF32-80/8-2	Inches	58.43	26.61	31.81	12.08	15.6	583	265
	mm	1484	676	808	310	400		
PSMCF32-80/8	Inches	61.18	26.61	34.57	12.08	15.6	671	305
	mm	1554	676	878	310	400		
PSMCF32-90/9-2	Inches	63.94	29.37	34.57	12.08	15.6	693	315
	mm	1624	746	878	310	400		
PSMCF32-90/9	Inches	63.94	29.37	34.57	12.08	15.6	693	315
	mm	1624	746	878	310	400		
PSMCF32-100/10-2	Inches	66.69	32.13	34.57	12.08	15.6	715	325
	mm	1694	816	878	310	400		

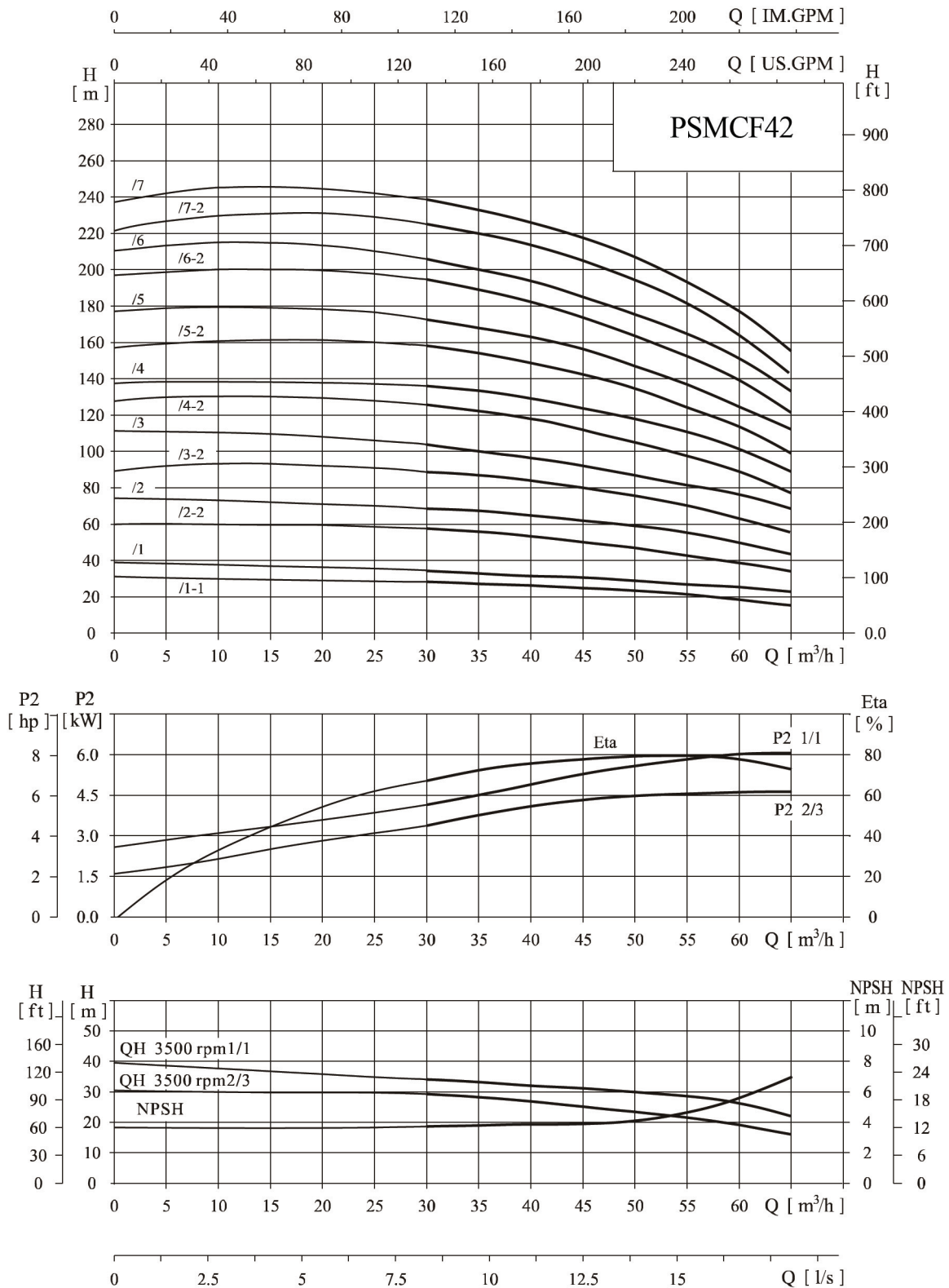
The overall dimensions of the single-phase motor and explosion-proof motor are a little changed. Pls contact us for details.

PSMCF42, 60 Hz

● Performance curve

ISO9906 Annex A

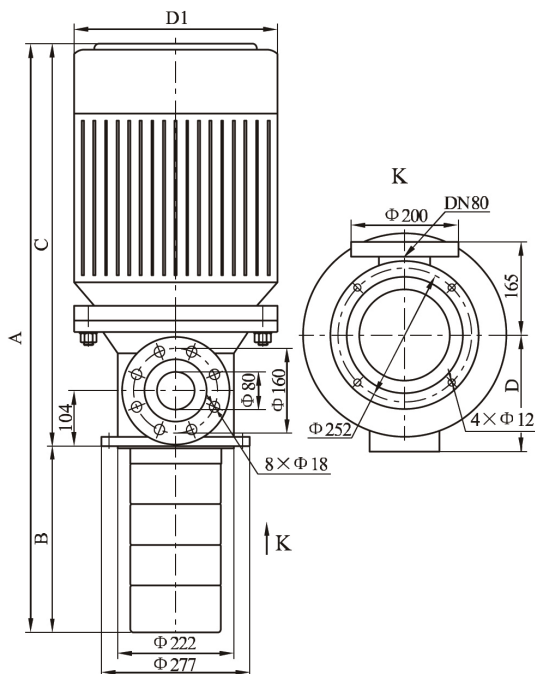
3500rpm



● Performance table

Model	Driving motor		Q (m ³ /h)	30	35	40	42	45	50	55	60	65
	(kW)	(hp)										
CDLK42-10/1-1	5.5	7.5	H (m)	29	28	27	26	25	23	21	19	16
CDLK42-10/1	7.5	10		34	33	32	31.5	30	29	27	25	22
CDLK42-20/2-2	11	15		57	55	53	52	49	46	43	38	33
CDLK42-20/2	15	20		69	67	65	63	61	59	55	50	44
CDLK42-30/3-2	18.5	25		90	88	85	83	80	75	72	63	55
CDLK42-30/3	18.5	25		102	100	97	95	92	88	82	76	68
CDLK42-40/4-2	22	30		125	121	118	115	112	105	98	89	78
CDLK42-40/4	30	40		136	133	129	126	123	117	112	102	89
CDLK42-50/5-2	30	40		159	154	149	146	142	134	121	115	99
CDLK42-50/5	30	40		171	166	161	158	154	145	138	126	112
CDLK42-60/6-2	37	50		194	188	182	178	173	163	155	139	122
CDLK42-60/6	37	50		205	200	193	190	186	176	166	152	134
CDLK42-70/7-2	45	60		227	220	213	210	205	193	182	165	144
CDLK42-70/7	45	60		239	232	226	221	216	204	194	178	157

● Installation sketch



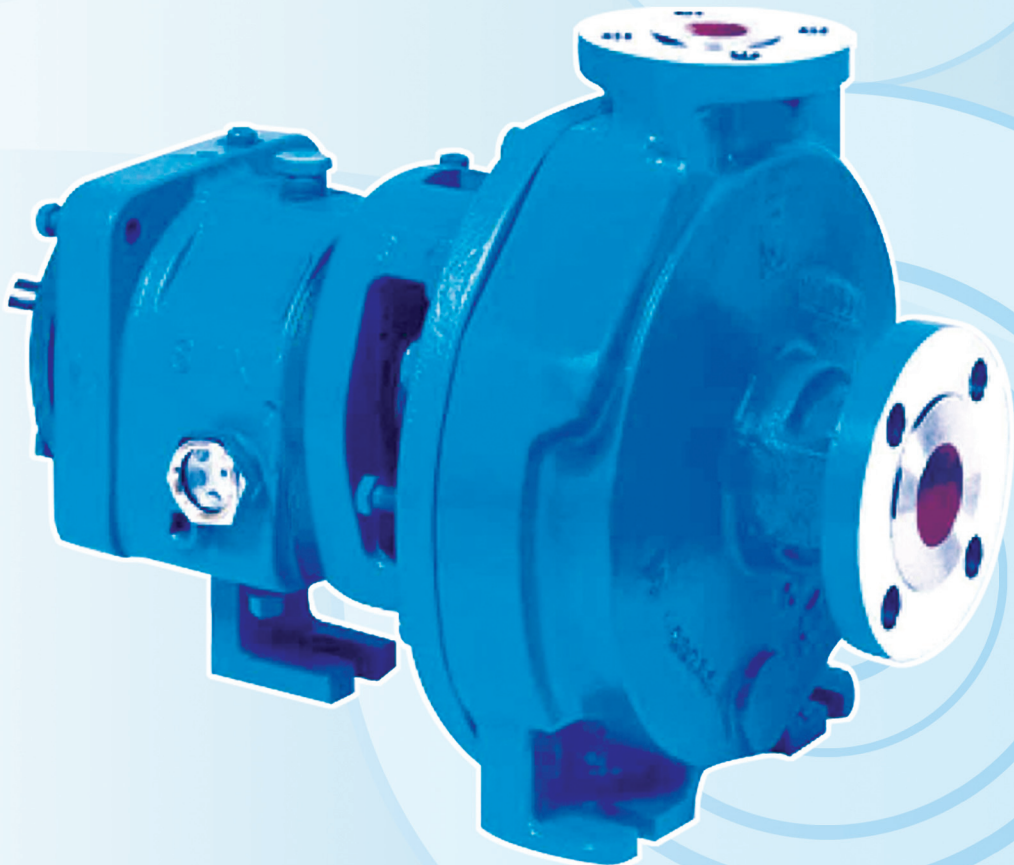
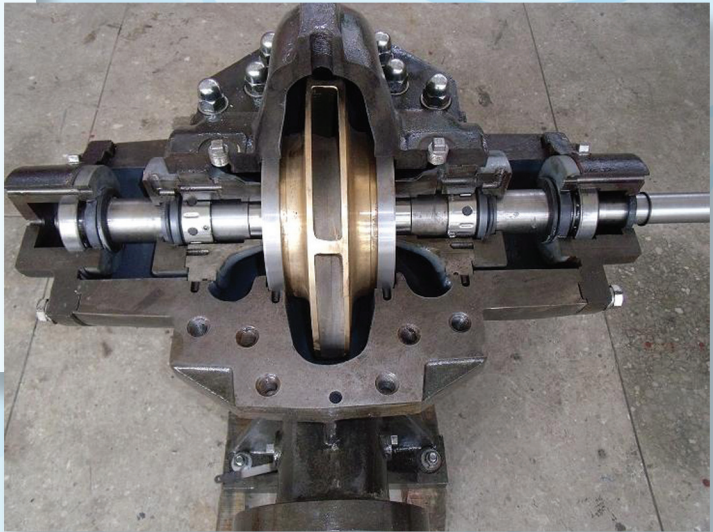
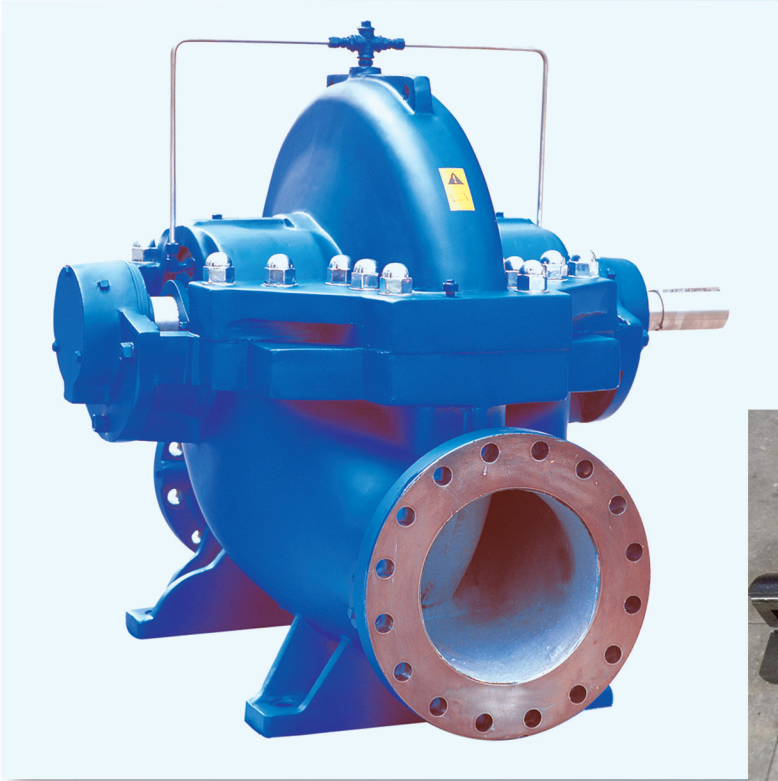
● Size and weight

Model		A	B	C	D	D1	Weight	
							lbs	kgs
PSMCF42-10/1	inches	31.772	7.795	23.976	8.112	10.14	194	88
	mm	807	198	609	208	260		
PSMCF42-20/2	inches	39.370	10.945	28.425	9.945	12.87	357.1	162
	mm	1000	278	722	255	330		
PSMCF42-30/3	inches	44.881	14.094	30.787	9.945	12.87	385.8	175
	mm	1140	358	782	255	330		
PSMCF42-40/4-2	inches	49.606	17.244	32.362	11.115	14.04	511.5	232
	mm	1260	438	822	285	360		
PSMCF42-40/4	inches	52.362	17.244	35.118	12.09	15.6	683.4	310
	mm	1330	438	892	310	400		
PSMCF42-50/5-2	inches	55.512	20.394	35.118	12.09	15.6	694.46	315
	mm	1410	518	892	310	400		
PSMCF42-50/5	inches	55.512	20.394	35.118	12.09	15.6	694.46	315
	mm	1410	518	892	310	400		
PSMCF42-60/6-2	inches	58.661	23.543	35.118	12.09	15.6	745.16	338
	mm	1490	598	892	310	400		
PSMCF42-60/6	inches	58.661	23.543	35.118	12.09	15.6	745.16	338
	mm	1490	598	892	310	400		
PSMCF42-70/7-2	inches	63.386	26.693	36.693	13.26	17.94	899.5	408
	mm	1610	678	932	340	490		
PSMCF42-70/7	inches	63.386	26.693	36.693	13.26	17.94	899.5	408
	mm	1610	678	932	340	490		

The overall dimensions of the single-phase motor and explosion-proof motor are a little changed. Pls contact us for details.

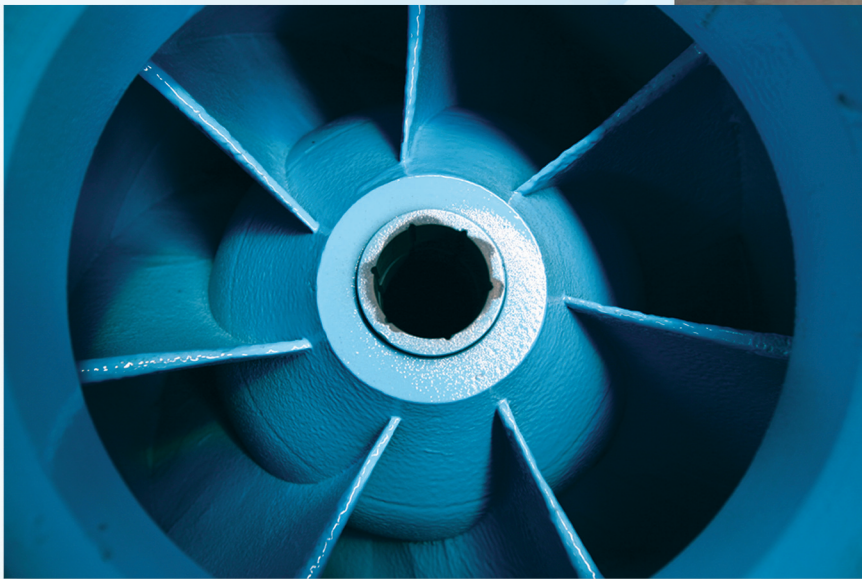
Company's Other Products





Company's Other Products







Proud pumps supplier for the New World Trade Center towers in New York

We are also a proud pumps supplier for the following completed and ongoing projects:



James Haley VA Hospital

Tampa, Florida
www.tampa.va.gov
 Eng: IC Thomasson Association Incorporated

Morton Plant North Bay Hospital

New Port Richey, Florida
www.mortonplant.com
 Eng: IC Thomasson Association Incorporated



Palm Beach Gardens Medical Center - ER Expansion

Plam Beach Gardens, Florida
www.pbgmc.com
 Eng: IC Thomasson Association Incorporated

Museum of Science and Industry

Tampa, Florida
www.mosi.org
 Eng: Advanced Systems Engineering



St-Joseph's Women's Hospital

Tampa, Florida
www.sjbhealth.org
 Eng: Smith, Seckman, Reid Engineering

FLO FAB Inc.

USA

Lake Worth
 Florida
 USA
 33467-5749

CANADA

860 Industriel Blvd
 Bois-des-Filion, Quebec
 J6Z 4V7
 Canada
 Tel.: (450) 621-2995
 Fax: (450) 621-4995