

pompes
5
années de garantie

Pièces et main-d'œuvre
packages
8
années de garantie

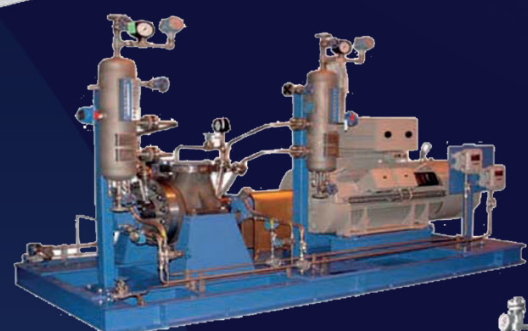
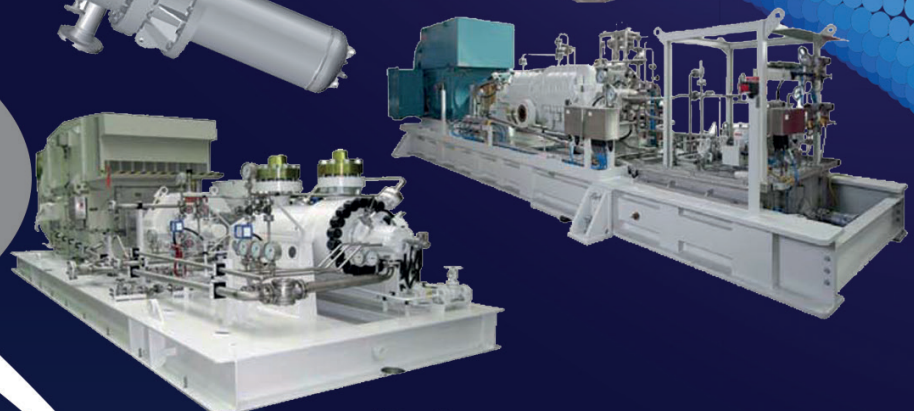
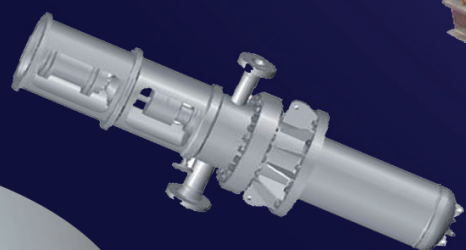


API

610 STANDARD

CATALOG

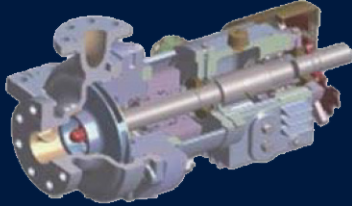
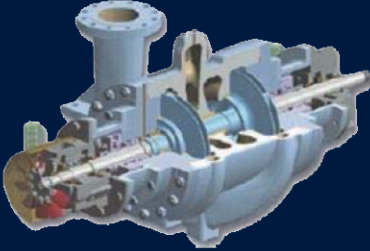
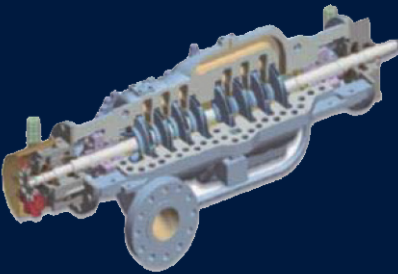
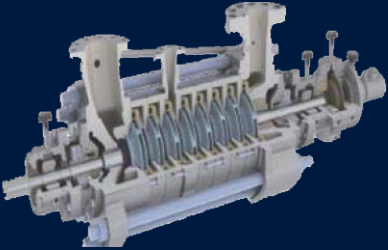
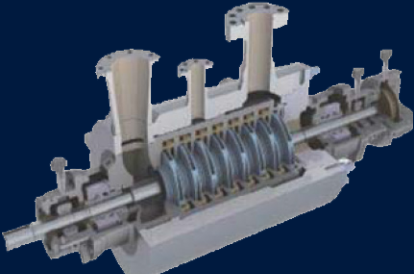
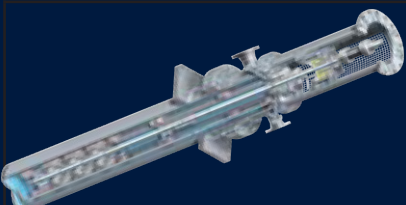
Centrifugal Pumps
for Petroleum,
Petrochemical
and Natural Industries





API 610 STANDARD
Centrifugal Pumps for Petroleum,
Petrochemical and Natural Industries

Pump Segment Matrix

PUMP TYPE	Flofab Models	Petro Chemical	Oil & Gas	Coil Chemical	Power	Pulp & paper	Food, matel	API Model
	FFSHC	X	X	X	X		X	FFOH2
	FFTR	X	X	X	X			FFBB2
	FFMTA	X	X	X	X		X	FFBB3
	FFMSTR	X		X	X			FFBB4
	FFMDTR	X	X	X	X			FFBB5
	FFLDD	X			X			FFVS6

Overhung Single Stage Radially Split Pumps



APPLICATION:

Upstream

- Crude oil, oil products and liquefied gases including offshore
- Pressure boosting
- Water supply (sea and produced water)
- Fuel gas purification

Downstream

- Gas fractionation
- Hydrocracking
- Catalytic cracking
- Isomerization
- Visbreaking
- Coking
- Demercaptanization
- Alkylation
- Hydrotreating

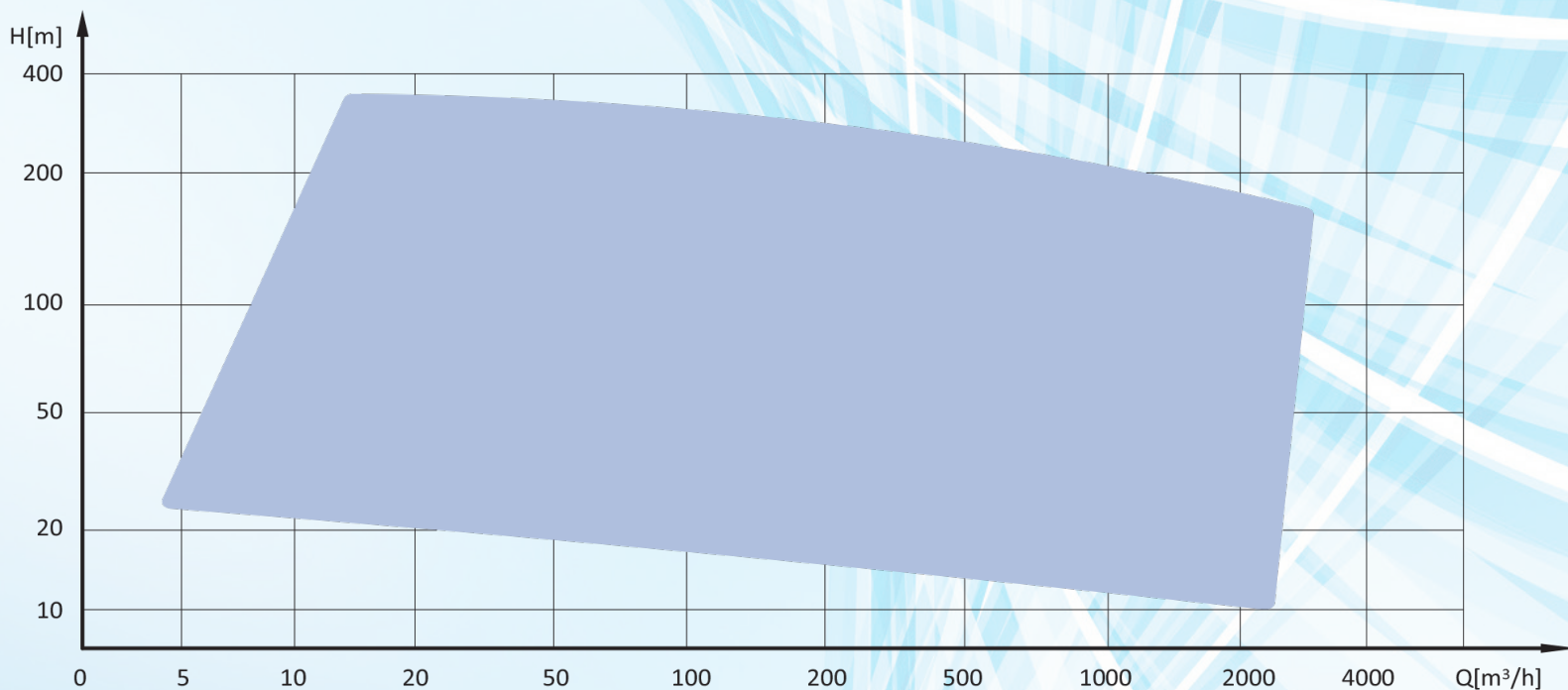
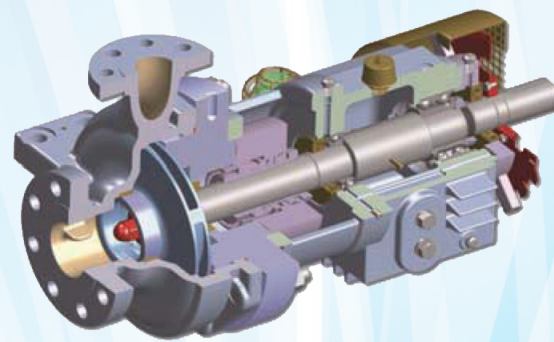
PERFORMANCE RANGE:

Capacity: 2 ~ 2750 m³/h

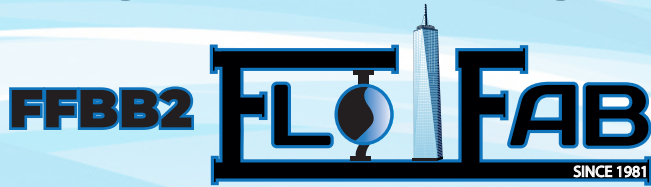
Head: 4 ~ 320 m

Working pressure: 5.0 Mpa

Operating temperature: -80 °C ~ 427 °C



Single-/ Two-Stage Double Suction Radially Split Pumps



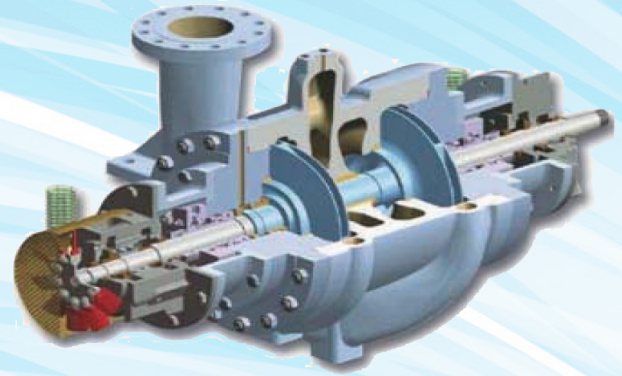
APPLICATION:

Upstream

- Crude oil, oil products and liquefied gases in upstream processes, including offshore
- Pressure boosting
- Gas and gas condensate processing
- Fuel gas purification
- Water supply

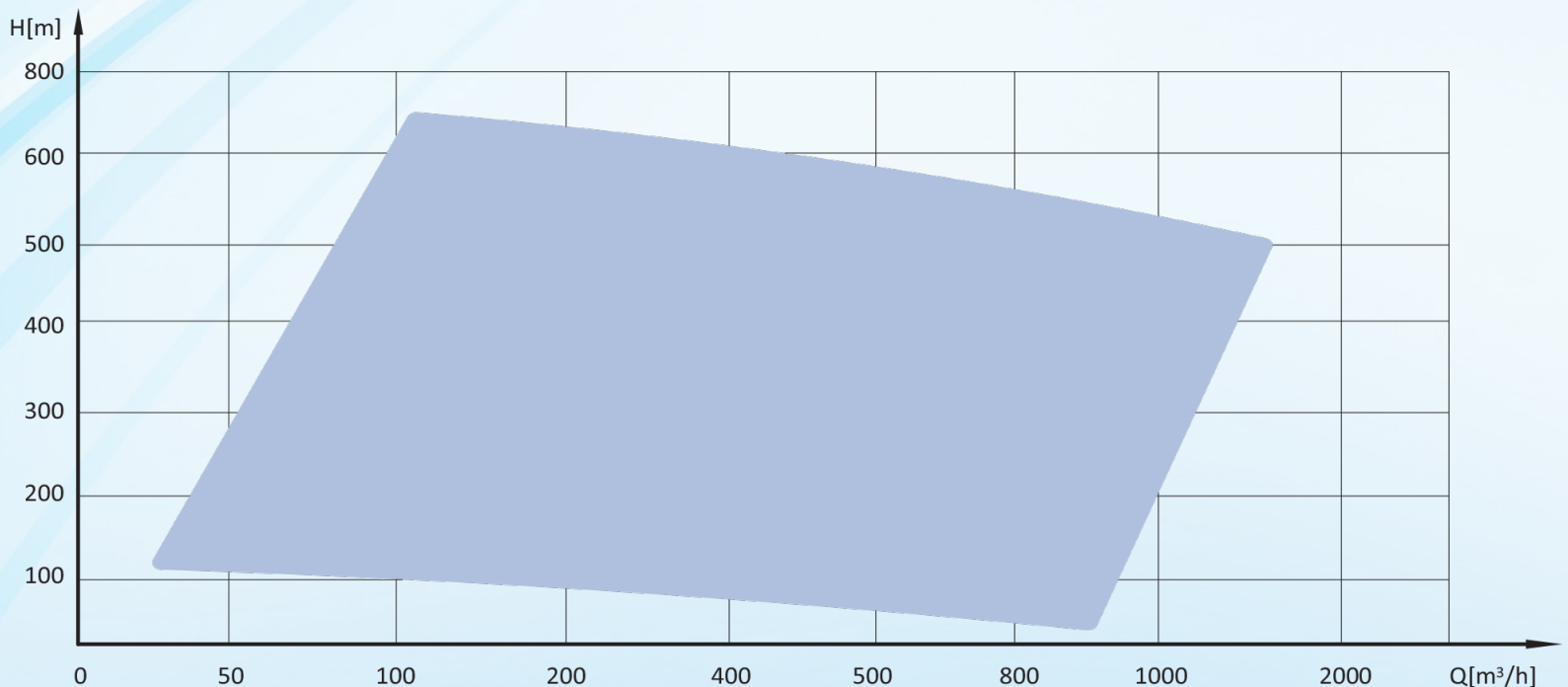
Downstream

- Gas fractionation
- Atmospheric/vacuum distillation
- Hydrocracking
- Catalytic cracking
- Isomerization
- Demercaptanization
- Alkylation
- Reforming

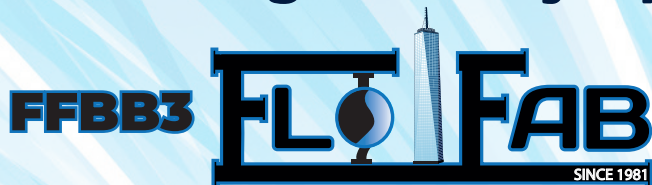


PERFORMANCE RANGE:

Capacity: 40 ~ 4500 m³/h
Head: ~ 460 m
Working pressure: ~ 15 Mpa
Operating temperature: -80 °C ~ 427 °C



Multistage Axially Split Pumps



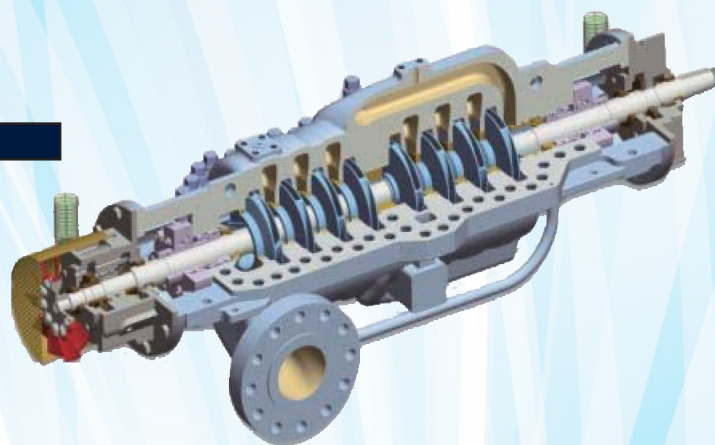
APPLICATION:

Upstream

- Crude oil, oil products and liquefied gases in upstream processes, including offshore
- Pressure boosting
- Gas and gas condensate processing
- Fuel gas purification

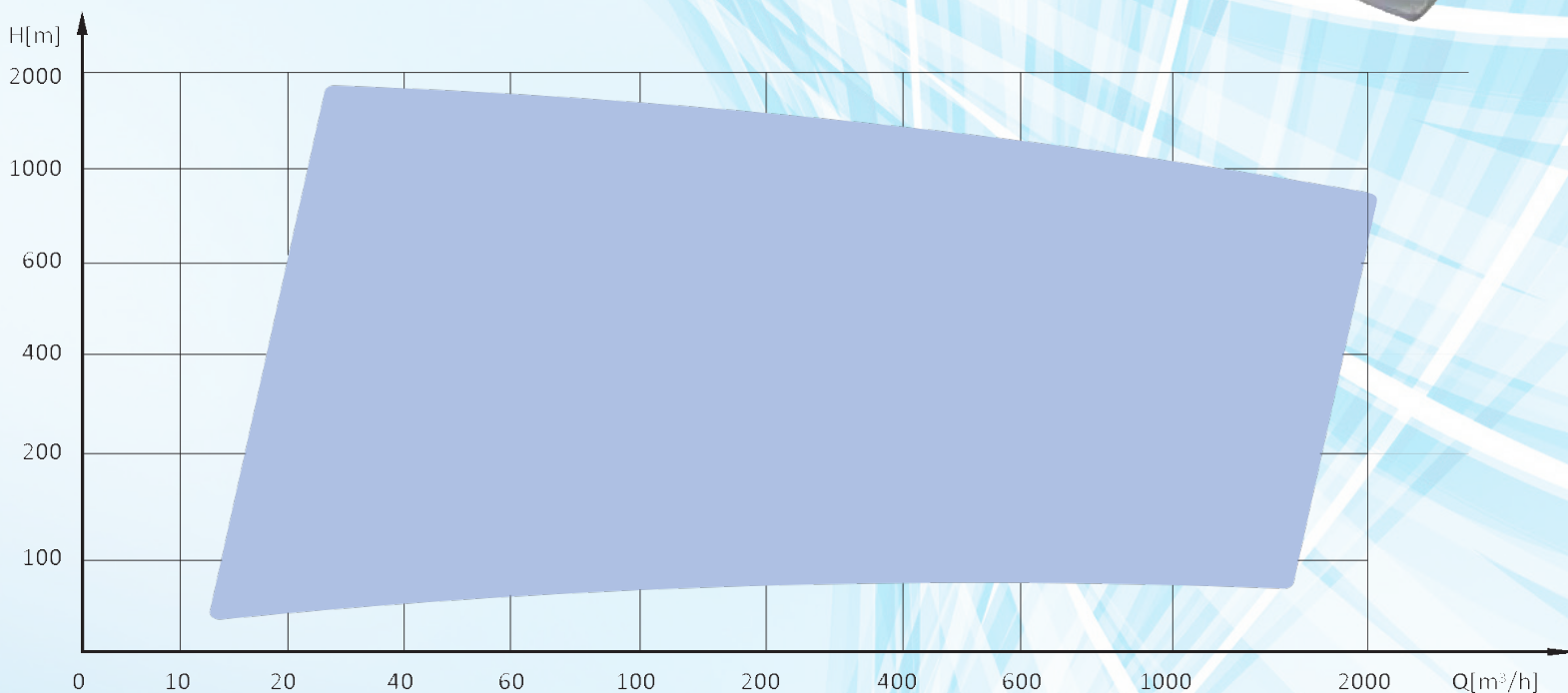
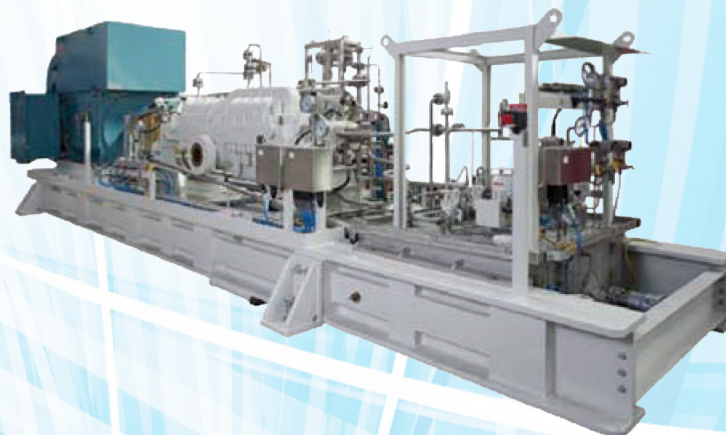
Downstream

- Catalytic cracking
- Isomerization

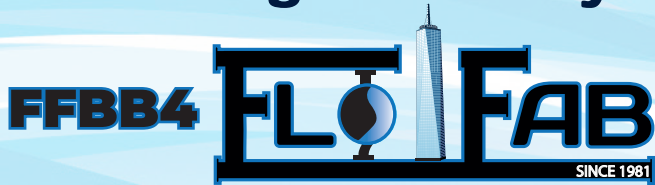


PERFORMANCE RANGE:

Capacity: 8 ~ 1500 m³/h
Head: ~ 2220 m
Working pressure: ~ 25 Mpa
Operating temperature: -45 °C ~ 200 °C



Multistage Radially Split Pumps



APPLICATION:

Upstream

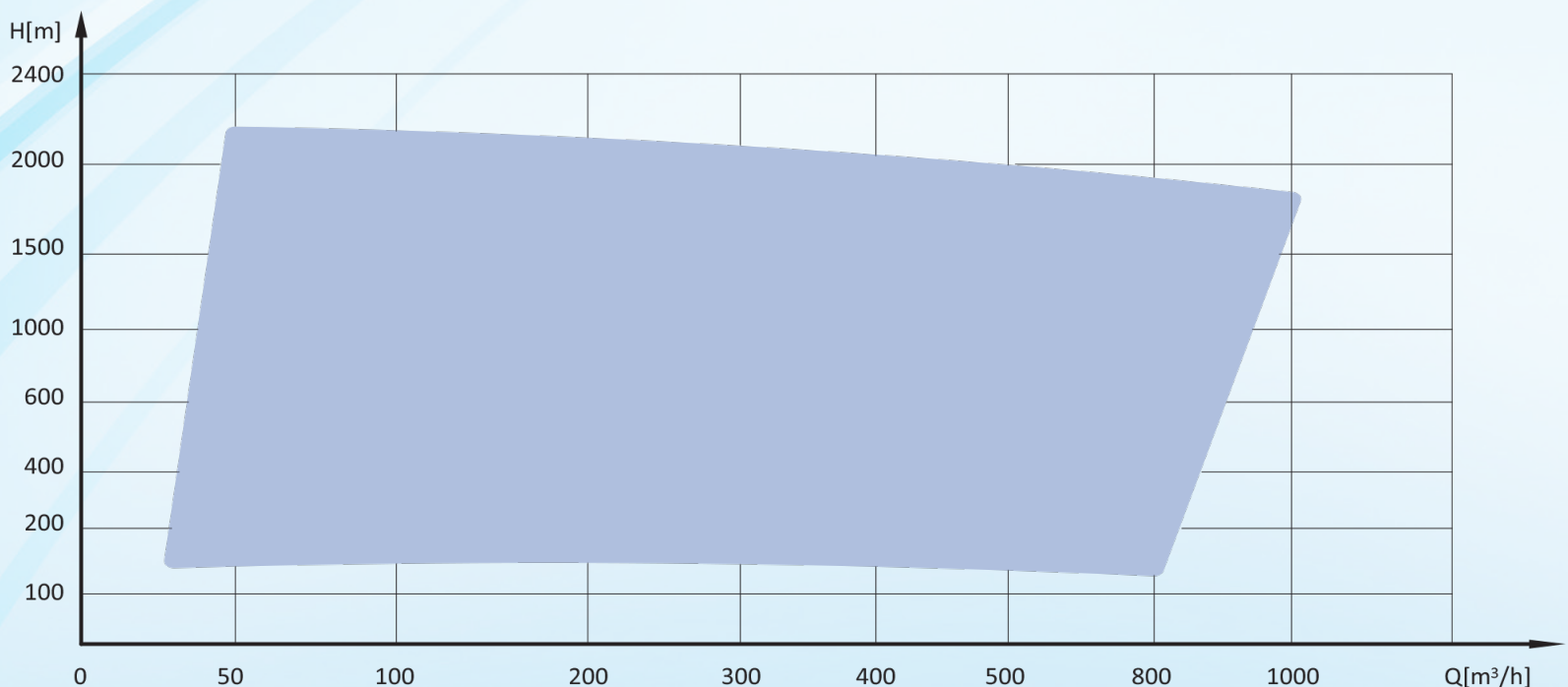
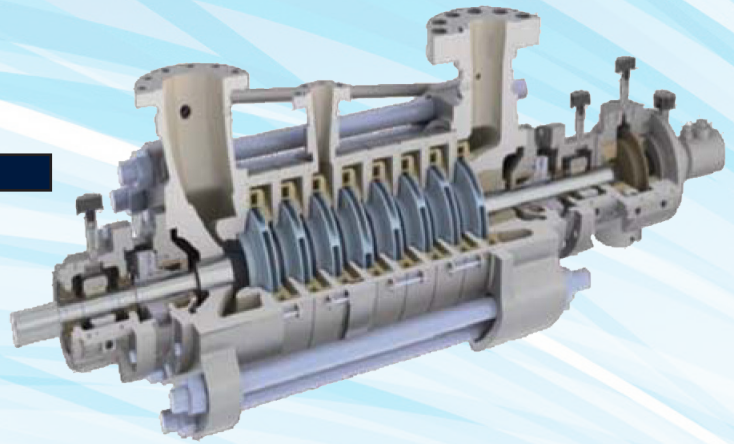
- Crude oil, oil products and liquefied gases in upstream processes, including offshore
- Pre-processing of crude oil and gas
- Hot oil injection system
- Water injection system (produced and sea water)
- Fuel gas purification

Downstream

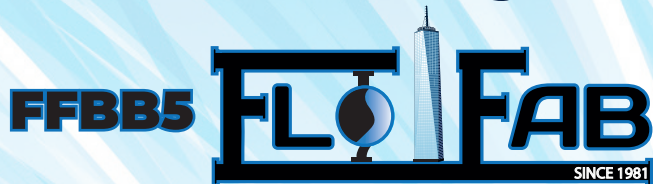
- Injection of oil, oil products and various liquids in refining and petrochemical processes

PERFORMANCE RANGE:

Capacity: 9 ~ 1200 m³/h
Head: 140 ~ 3200 m
Working pressure: ~ 35 Mpa
Operating temperature: -80 °C ~ 220 °C



Barrel Multistage Radially Split Pumps



APPLICATION:

Upstream

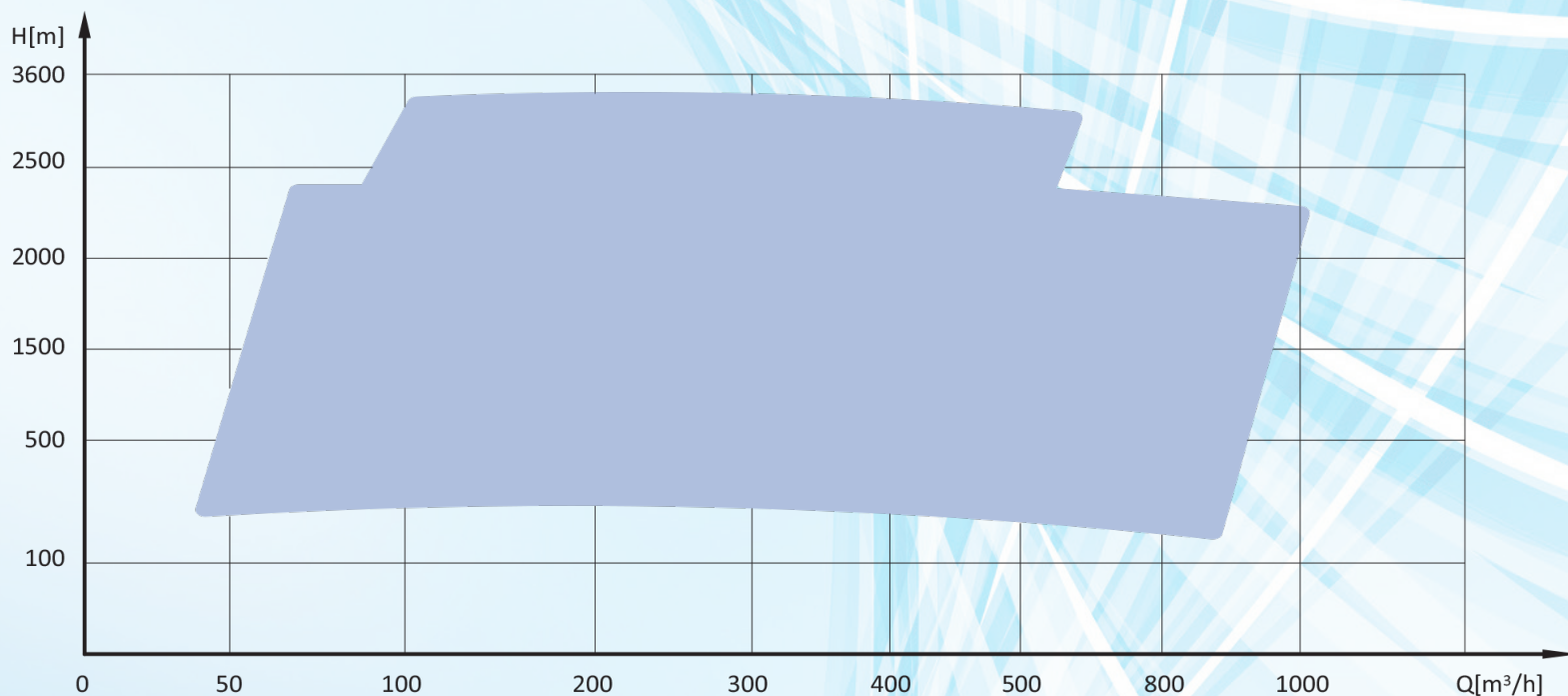
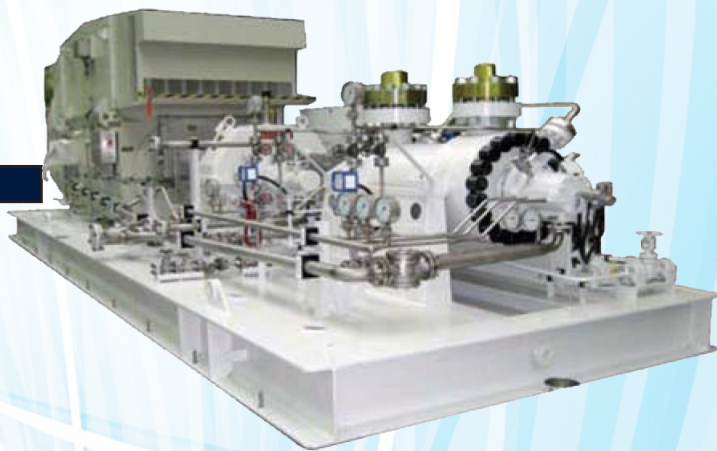
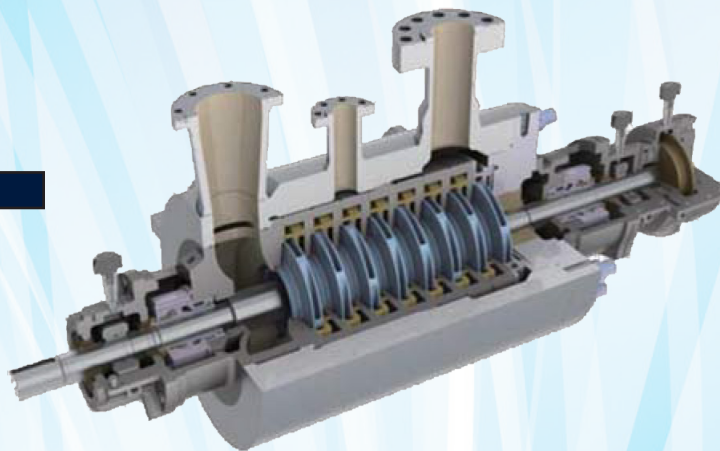
- Crude oil, oil products and liquefied gases in upstream processes, including offshore
- Water injection system (produced and sea water)
- Hoot oil injection system

Downstream

- Gas fractionation
- Coking
- Demercaptanization
- Alkylation
- Reforming

PERFORMANCE RANGE:

Capacity: 9 ~ 1200 m³/h
 Head: ~ 3200 m
 Working pressure: ~ 35 Mpa
 Operating temperature: -80 °C ~ 450 °C



Vertically Suspended Pumps - Double Casing Multistage Pumps With Diffusers/Bowls



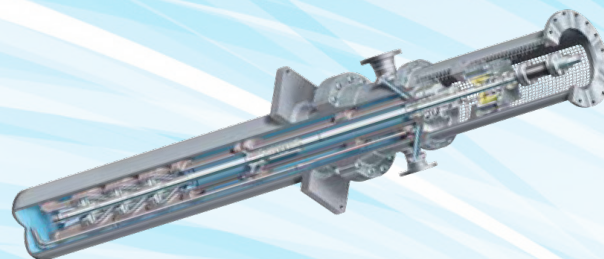
APPLICATION:

Upstream

- Transportation of crude oil, oil products and liquefied gases
- Pressure boosting

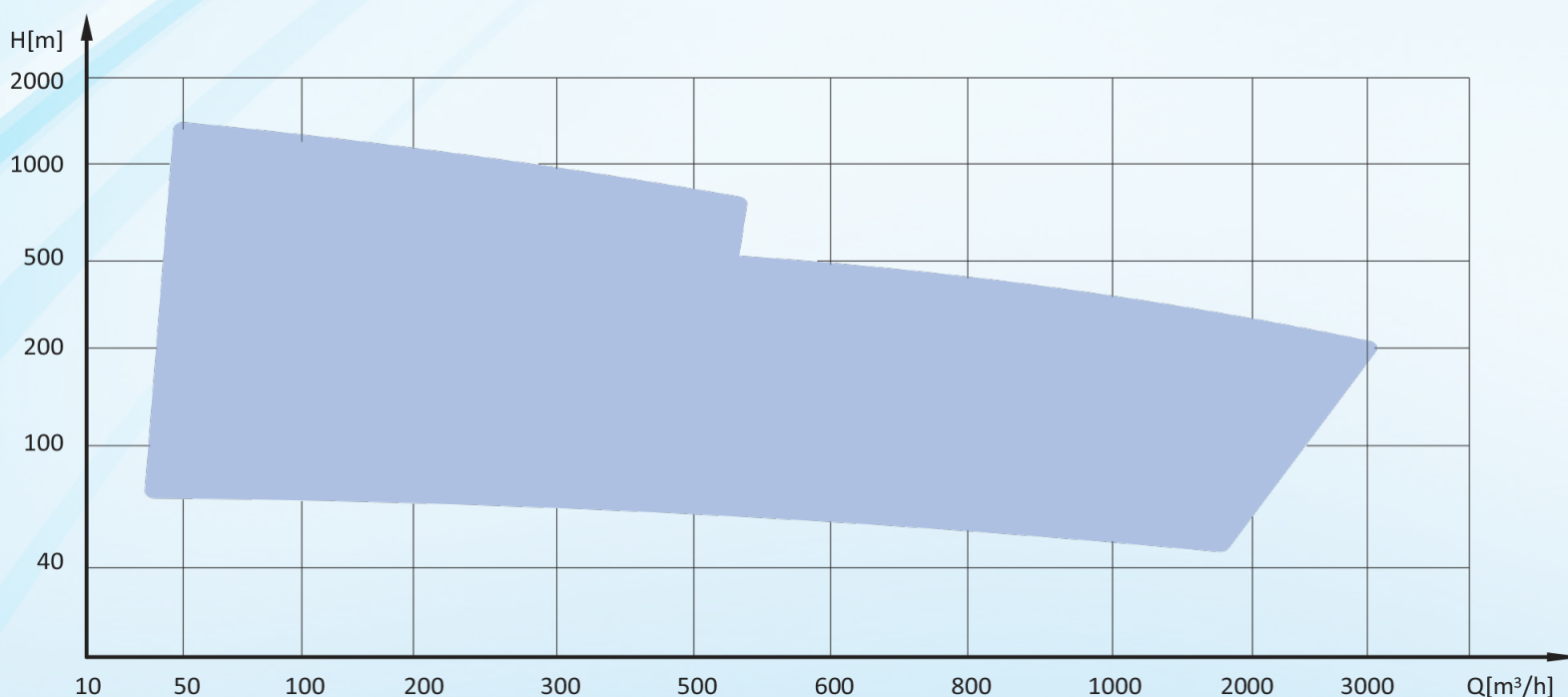
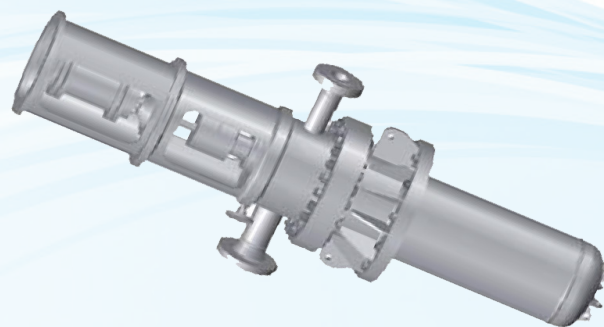
Downstream

- Gas fractionation
- Demercaptanization
- Visbreaking
- Deforming



PERFORMANCE RANGE:

Capacity: 10 ~ 1300 m³/h
 Head: 40 ~ 1200 m
 Working pressure: up to 15 Mpa
 Operating temperature: -110 °C ~ 250 °C





MATERIAL CLASS

According to API 610 11TH Edition

Pump parts	Materials Classes						
	I-1	I-2	S-1	S-3	S-4	S-5	S-6
Casing	Cast iron	Cast iron	Carbon steel	Carbon steel	Carbon steel	Carbon steel	Carbon steel
Inner casing parts	Cast iron	Bronze	Cast iron	Ni-resist	Cast iron	Carbon steel	12% CR
Shaft	Carbon steel	Carbon steel	Carbon steel	Carbon steel	Carbon steel	AISI 4140	AISI 4140
Impeller	Cast iron	Bronze	Cast iron	Ni-resist	Carbon steel	Carbon steel	12% CR

Pump parts	Materials Classes						
	S-8	S-9	C-6	A-7	A-8	D-1	D-2
Casing	Carbon steel	Carbon steel	12% CR	AUS	316 AUS	Duplex	Super Duplex
Inner casing parts	316 AUS	Ni-Cu alloy	12% CR	AUS	316 AUS	Duplex	Super Duplex
Shaft	316 AUS	Ni-Cu alloy	12% CR	AUS	316 AUS	Duplex	Super Duplex
Impeller	316 AUS	Ni-Cu alloy	12% CR	AUS	316 AUS	Duplex	Super Duplex

SCOPE OF SUPPLY

Pump: according to API 610

Driver: electric motor from SIEMENS, ABB, WEG and other manufacturers

Bearings: from SKF, NSK, FAG and other leading manufacturers

Coupling: from John Crane and Trumy.

Shaft Sealing: mechanicals seals from John Crane EagleBurgmann, and FFlowserve.

Sensors: auxiliary systems

Nous sommes fiers d'être le fournisseur pour les projets achevés et en cours suivants :



Zermatt Lodge
Salt Lake City, UT, U.S.A.
<https://zermattresort.com>



Pier 17 South Street Seaport
South Street, New York, U.S.A
www.southstreetseaport.com



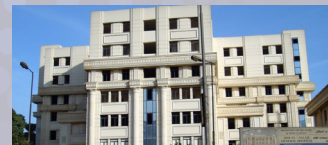
Pearl-Qatar
Doha, Qatar
www.thepearlqatar.com



Museum of Science and Industry
Tampa, Florida
www.mosi.org
Eng: Advance System Engineering



Exchange Tower
Vancouver, B.C., Canada
www.theexchangebuilding.ca



Dar El Salam General Hospital
Cairo Governorate, Egypt



Brock University Center
St. Catharines, Ontario, Canada
<https://www.brocku.ca>



520 Park Avenue
New York, U.S.A
www.520parkavenue.com



Saudi Jeddah
Jeddah Saudi, Arabia
www.ports.gov.sa



St-Joseph Women's Hospital
Tampa, Florida
www.sjbhealth.org
Eng: Smith, Seckman, Reid Engineering



Millenium Hilton
New-York City, NY, U.S.A
www.hilton.com



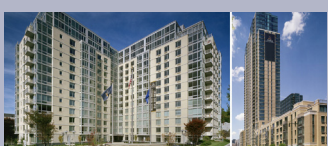
Le M Lorraine
Lorraine, Quebec, Canada
www.l emlorraine.com



Morton Plant North Bay Hospital
New Port Richey, Florida
www.mortonplant.com
Eng: IC Thomasson Association Incorporated



Lowney
Montréal, Quebec, Canada
<http://lelowney.prevel.ca>



Sheepshead Residential Tower
Brooklyn, New York City, U.S.A.
<http://www.sheepsheadbites.com>



Ventes & Service:

Québec, Canada
Tel.: (450) 621-2995
Fax: (450) 621-4995

SERVICE 24/7:
parts@flobab.com

www.flobab.com

