

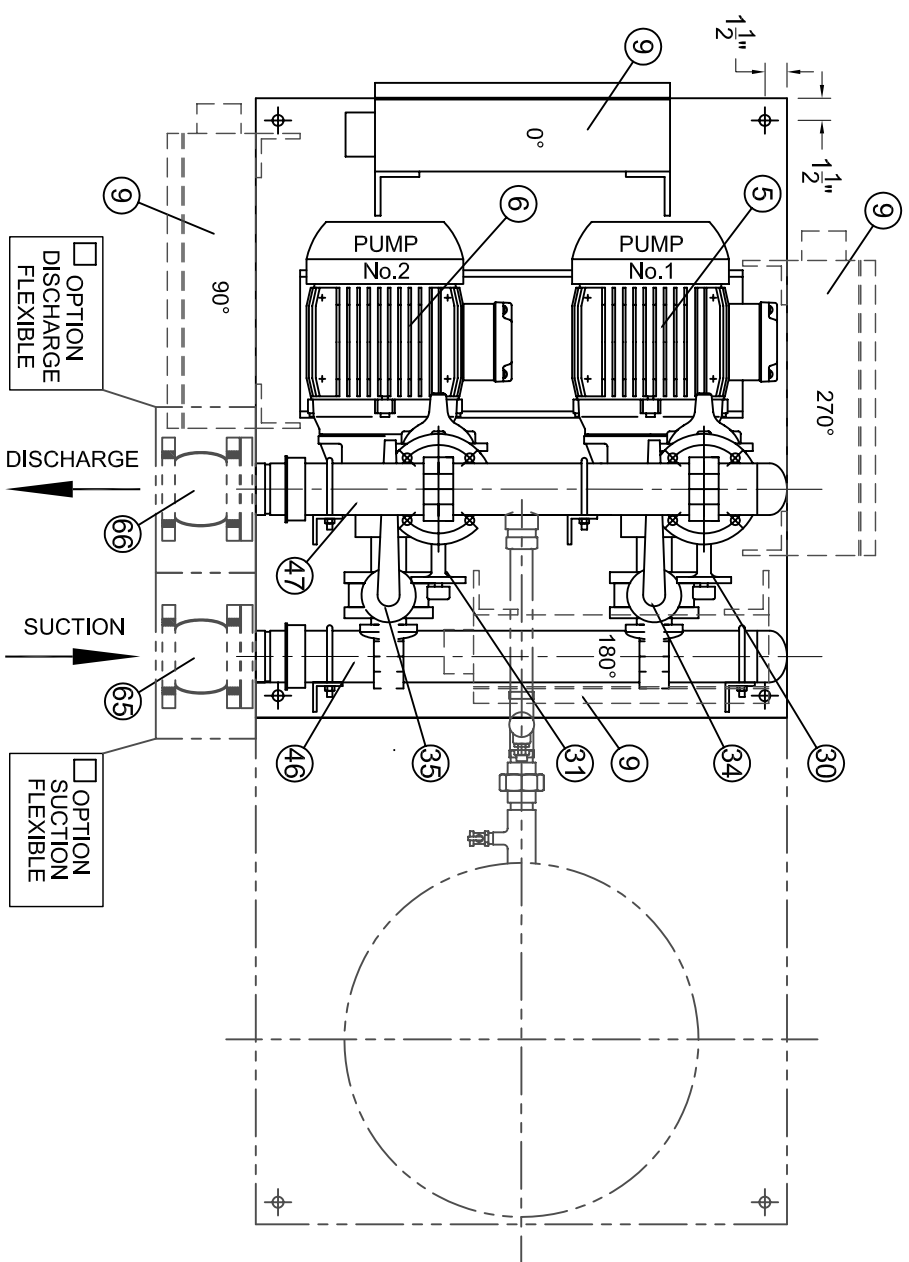
DISCHARGE OPTIONS

	PUMP No.1	PUMP No.2
<input type="checkbox"/>		
<input type="checkbox"/>		
<input type="checkbox"/>		
<input type="checkbox"/>		
<input type="checkbox"/>		
<input type="checkbox"/>		

STANDARD AS SHOWN	OPTION-1	OPTION-2
<input type="checkbox"/>	<input type="checkbox"/>	<input type="checkbox"/>

HEADER SIZE
<input type="checkbox"/> 0-300 USGPM Ø3"
<input type="checkbox"/> 301-500 USGPM Ø4"
<input type="checkbox"/> 501-1100 USGPM Ø6"

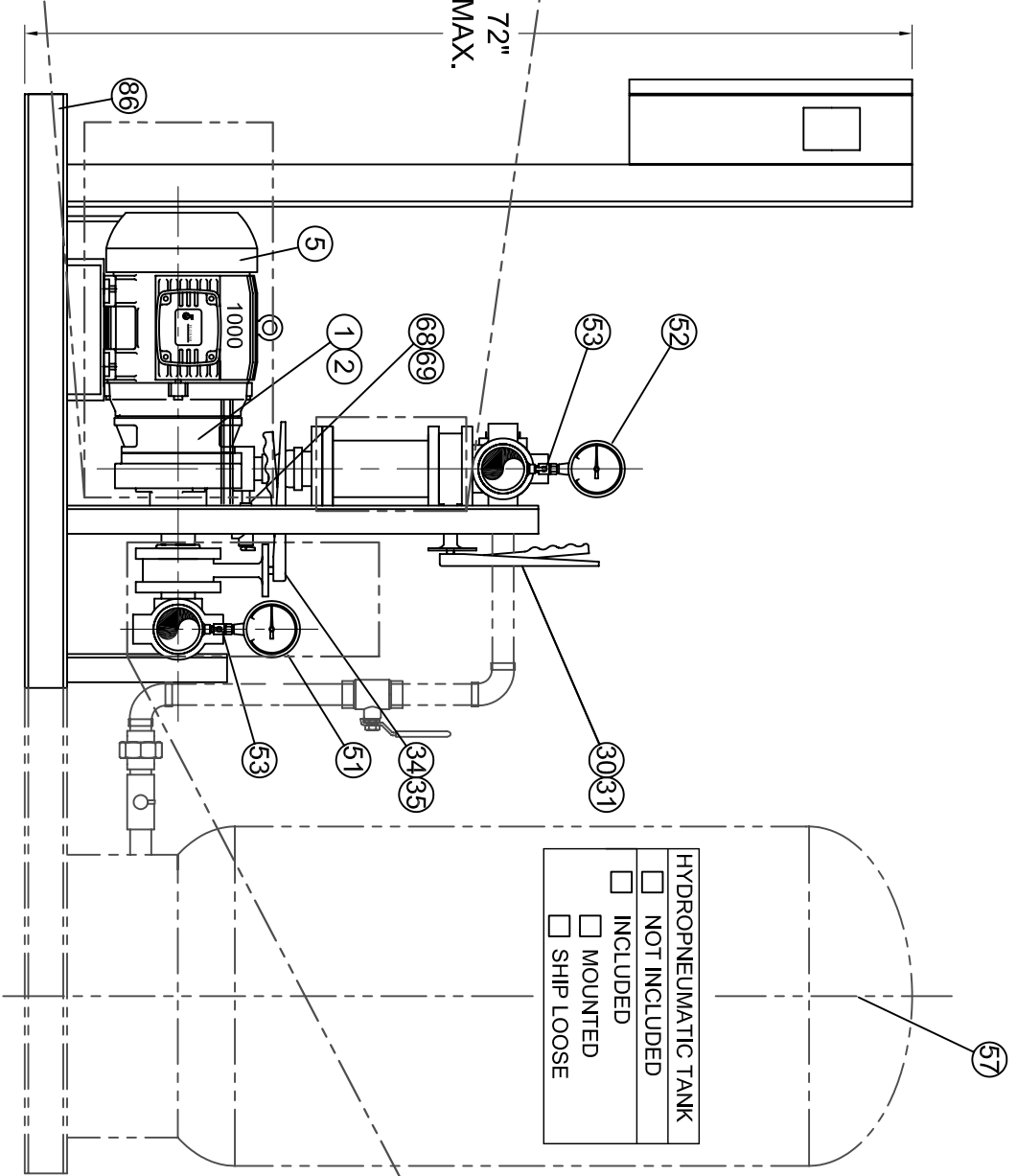
CONTROL PANEL	ITEM 9	POSITION
<input type="checkbox"/>	<input type="checkbox"/>	0°
<input type="checkbox"/>	<input type="checkbox"/>	90°
<input type="checkbox"/>	<input type="checkbox"/>	180°
<input type="checkbox"/>	<input type="checkbox"/>	270°
<input type="checkbox"/>	<input type="checkbox"/>	WALL MOUNTED



OPTION DISCHARGE FLEXIBLE

OPTION SUCTION FLEXIBLE

HYDRO-PNEUMATIC TANK	
<input type="checkbox"/>	NOT INCLUDED
<input type="checkbox"/>	INCLUDED
<input type="checkbox"/>	MOUNTED
<input type="checkbox"/>	SHIP LOOSE



SUCTION OPTIONS

	PUMP No.1	PUMP No.2
<input type="checkbox"/>		
<input type="checkbox"/>		
<input type="checkbox"/>		
<input type="checkbox"/>		

<input type="checkbox"/>	D-CPS-
<input type="checkbox"/>	D-CPS-HT-

FLO FAB
AQUA PROFAB

880 BOULEVARD INDUSTRIEL
BOISJES-FRAN, QC
J0Z 2V1 (450) 674-2885

ENGINEER / INGENIEUR

CUSTOMER / CLIENT

PART LIST N° / LISTE DE MATERIEL N°

DATE / DATE

SCALE / ECHELLE

N / A

DRAWING N° / N° DESSIN

D-CPS-1000_2000_SUBMITTAL

REV 0


TITLE / TITRE

FLO FAB DUPLEX CONSTANT PRESSURE SYSTEMS

SERIES "CPS"

NO	QTY	DESCRIPTION	SIZE	PART NUMBER
1	1	PUMP 1		
2	1	PUMP 2		
5	1	M1 MOTOR		
6	1	M2 MOTOR		
9	1	PANEL CONTROL		
10		NO. 1 PRESSURE REDUCING VALVE (W/ C V)		
10A		NO. 1 PRESSURE REDUCING VALVE (W/O C V)		
11		NO. 2 PRESSURE REDUCING VALVE (W/ C V)		
11A		NO. 2 PRESSURE REDUCING VALVE (W/O C V)		
14		NO. 1 TRIPLE DUTY VALVE		
15		NO. 2 TRIPLE DUTY VALVE		
18		NO. 1 SUCTION DIFFUSER (WITH STRAINER)		
19		NO. 2 SUCTION DIFFUSER (WITH STRAINER)		
22		NO. 1 Y-STRAINER		
23		NO. 2 Y-STRAINER		
30		NO. 1 DISCHARGE BUTTERFLY VALVE		
31		NO. 2 DISCHARGE BUTTERFLY VALVE		
34		NO. 1 SUCTION BUTTERFLY VALVE		
35		NO. 2 SUCTION BUTTERFLY VALVE		
38		NO. 1 DISCHARGE CHECK VALVE		
39		NO. 2 DISCHARGE CHECK VALVE		
46	1	SUCTION HEADER SIZE AND MATERIAL		
47	1	DISCHARGE HEADER SIZE AND MATERIAL		
51	1	SUCTION PRESSURE GAUGE		
52	1	DISCHARGE PRESSURE GAUGE		
53	2	PET COCKS		
57		DISCHARGE EXPANSION TANK (CPS SYSTEM)		
65		SUCTION FLEXIBLE		
66		DISCHARGE FLEXIBLE		
68	1	P1 TEMPERATURE RELIEF CONTROL VALVE		
69	1	P2 TEMPERATURE RELIEF CONTROL VALVE		
86	1	STEEL FABRICATED BASEPLATE		

<input type="checkbox"/>	D-CPS-_____
<input type="checkbox"/>	D-CPS-HT-_____

TITLE / TITRE		FLO FAB - DUPLEX "CPS" SERIES 1000/2000	
		MATERIAL LIST	
 FLO FAB AQUA PROFAB	PROJECT / PROJET		
	CUSTOMER / CLIENT		
860 BOULEVARD INDUSTRIEL BOIS-DES-FILION, QC J6Z 4V7, (450) 621-2995	DRAWING N° / N° DESSIN	DATE / DATE	MAY 2007
DRAWN BY / DESSINATEUR	SCALE / ÉCHELLE	PART LIST N° / LISTE DE MATERIEL N°	REV
M. LYMBURNER	N / A		0

REV	DESCRIPTION	DATE	INIT.