



NSF/ANSI 61

WHERE QUALITY COMES FIRST

Hydro-Plus *Bottom Connection Well Tank*



technical features:

- 150 PSI Rated
- All Weather Epoxy-polyester Powder Coated Paint
- SS Connector
- Polypropylene Base for All Weather Applications
- 5 year warranty on all models

(HydroPlus BC)

■ ***material description***

| <i>description</i> | <i>material</i> |
|---------------------------|------------------------|
| <i>shell</i> | <i>carbon steel</i> |
| <i>connection</i> | <i>stainless steel</i> |
| <i>fixed membrane</i> | <i>butyl**</i> |
| <i>material of base</i> | <i>polypropylene</i> |
| <i>tank color</i> | <i>blue</i> |
| <i>base color</i> | <i>grey</i> |

** for potable water applications

■ ***operating conditions***

| | |
|--------------------------------|----------------|
| <i>max. operating pressure</i> | <i>150 psi</i> |
| <i>operating temperature</i> | <i>210 °F</i> |
| <i>factory precharge</i> | <i>38 psi</i> |

■ technical and dimensional data

| Model | Capacity | Diameter | Height | Base Diameter | Connection Height | Connection Size | Precharge |
|--------------|-----------------|-------------------|-------------------|----------------------|--------------------------|------------------------|------------------|
| | gallons | inches (D) | inches (H) | inches (B) | inches (E) | NPT (C) | psi |
| ZHP202BC | 21.1 | 17.7 | 26.9 | 16.8 | 1.6 | 1" | 38 |
| ZHP202BVBC | 21.1 | 17.7 | 27.9 | 16.8 | 1.6 | 1" | 38 |
| ZHP203BC | 27.7 | 17.7 | 29.2 | 16.8 | 1.6 | 1 1/4" | 38 |
| ZHP34BC | 34.1 | 19.7 | 33.9 | 16.8 | 1.6 | 1 1/4" | 38 |
| ZHP204BC | 39.6 | 19.7 | 38.3 | 16.8 | 1.6 | 1 1/4" | 38 |
| ZHP250BC | 54.7 | 19.7 | 49.7 | 16.8 | 1.6 | 1 1/4" | 38 |
| ZHP302BC | 79.3 | 24.8 | 46.9 | 16.8 | 2.1 | 1 1/4" | 38 |
| ZHP351BC | 119.0 | 24.8 | 65.9 | 16.8 | 2.1 | 1 1/4" | 38 |

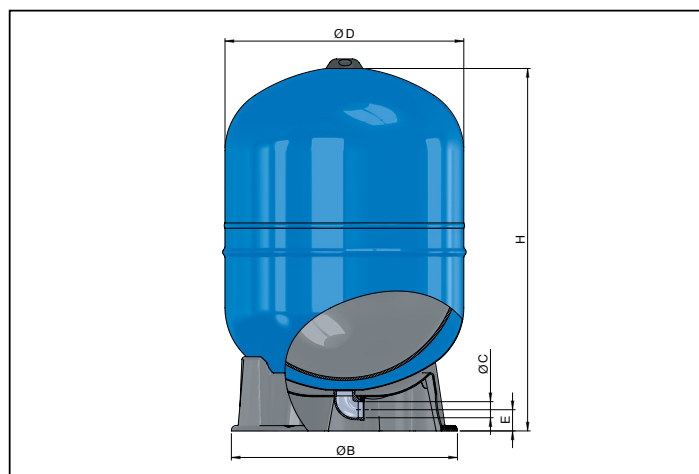
| Model | System Drawdown | |
|---------------------|------------------------|------------------|
| | 30-50 psi | 40-60 psi |
| ZHP202BC/ZHP202BVBC | 7.2 | 6.2 |
| ZHP203BC | 9.5 | 8.2 |
| ZHP34BC | 11.6 | 10.1 |
| ZHP204BC | 13.5 | 11.7 |
| ZHP250BC | 18.6 | 16.1 |
| ZHP302BC | 27.0 | 23.4 |
| ZHP351BC | 40.6 | 35.1 |

■ zilmet well tank sizing chart

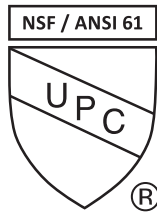
| Gallons per Minute | 30/50 psig | | 40/60 psig | |
|---------------------------|-------------------|--------------|-------------------|--------------|
| | 1 min | 2 min | 1 min | 2 min |
| GPM | | | | |
| 5 | ZHP202BC/202BVBC | ZHP34BC | ZHP202BC/202BVBC | ZHP34BC |
| 10 | ZHP34BC | ZHP250BC | ZHP34BC | ZHP302BC |
| 12 | ZHP204BC | ZHP302BC | ZHP204BC | ZHP302BC |
| 15 | ZHP204BC | ZHP302BC | ZHP250BC | ZHP351BC |
| 20 | ZHP250BC | ZHP351BC | ZHP302BC | ZHP302BC (2) |
| 25 | ZHP302BC | ZHP302BC (2) | ZHP302BC | ZHP302BC (2) |
| 30 | ZHP302BC | ZHP302BC (2) | ZHP351BC | ZHP351BC (2) |
| 35 | ZHP351BC | ZHP351BC (2) | ZHP351BC | ZHP351BC (2) |

* Use this chart to properly size your well tank to prevent excessive wear and tear on your well pump and to reduce energy consumption. (2) indicates - two tanks required.

■ technical drawing



Rev. March 2020



WHERE QUALITY COMES FIRST



Hydro-Plus

well tanks

Stainless steel side connection allows for quicker, less expensive installation

technical features:

- Seamless NSF 61 certified low permeability butyl diaphragm never creases and channels water directly to outlet, thus eliminating bacterial growth pockets
- MIG welding eliminates interior rough spots and sharp edges
- Low profile tank design with full membrane depth eliminates stretching of diaphragm, providing increased life cycle
-
- Powder coated finish for a longer lasting, more durable finish
- 5 year warranty on all models
- The connection advantages:
 - Easier and quicker installation
 - Less expensive installation
 - Less vulnerable to corrosion at connector

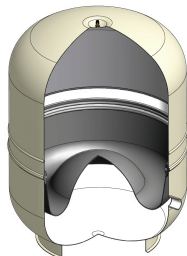
■ **material description**

| description | material |
|--------------------|------------------|
| shell | carbon steel* |
| connection | stainless steel* |
| fixed membrane | butyl** |
| color | almond |

* internally coated with powder for potable water applications
 ** for potable water applications

■ **operating conditions**

| | |
|-------------------------|---------|
| max. operating pressure | 150 psi |
| operating temperature | 210 °F |
| factory precharge | 38 psi |



■ technical and dimensional data

| Type | Model | Capacity | Diameter | Height | Connection Height | Connection Size | Precharge | System Drawdown | |
|------------------------------------|----------|----------|-------------|-----------|-------------------|-----------------|-----------|-----------------|-----------|
| | | gallons | inches (ØD) | inches(H) | inches(E) | NPT (ØC) | psi | 30-50 psi | 40-60 psi |
| Inline | ZHP5 | 2.1 | 7.9 | 11.0 | | 3/4" | 38 | 0.7 | 0.6 |
| Inline | ZHP12 | 4.8 | 10.6 | 13.7 | | 3/4" | 38 | 1.6 | 1.4 |
| Inline | ZHP18 | 6.3 | 11.8 | 15.4 | | 1" | 38 | 2.2 | 1.9 |
| Inline | ZHP104IL | 9.2 | 15.0 | 14.2 | | 1" | 38 | 3.1 | 2.7 |
| Inline | ZHP200IL | 13.2 | 15.0 | 19.6 | | 1" | 38 | 4.5 | 3.9 |
| Horizontal Model with Pump Bracket | ZHP200BH | 13.2 | 15.0 | 16.5 | | 1" | 38 | 4.5 | 3.9 |
| Stand Model | ZHP200F | 13.2 | 15.0 | 19.9 | 6.0 | 1" | 38 | 4.5 | 3.9 |
| Stand Model | ZHP202 | 21.1 | 17.7 | 23.9 | 5.9 | 1" | 38 | 7.2 | 6.2 |
| Stand Model with Pump Bracket | ZHP202BV | 21.1 | 17.7 | 24.4 | 5.9 | 1" | 38 | 7.2 | 6.2 |
| Horizontal Model with Pump Bracket | ZHP202BH | 21.1 | 17.7 | 19.1 | | 1" | 38 | 7.2 | 6.2 |
| Horizontal Spacemaker | ZHP202SM | 21.1 | 17.7 | 18.1 | | 1" | 38 | 7.2 | 6.2 |
| Stand Model | ZHP203 | 27.7 | 19.7 | 26.2 | 6.5 | 1 1/4" | 38 | 9.5 | 8.2 |
| Stand Model | ZHP204 | 39.6 | 19.7 | 35.3 | 8.5 | 1 1/4" | 38 | 13.5 | 11.7 |
| Stand Model | ZHP250 | 52.8 | 23.6 | 32.0 | 8.9 | 1 1/4" | 38 | 18.0 | 15.6 |
| Stand Model | ZHP251 | 66.0 | 24.8 | 37.7 | 9.6 | 1 1/4" | 38 | 22.5 | 19.5 |
| Stand Model | ZHP302 | 79.3 | 24.8 | 43.5 | 9.6 | 1 1/4" | 38 | 27.0 | 23.4 |
| Stand Model | ZHP350 | 105.7 | 24.8 | 57.1 | 9.6 | 1 1/4" | 38 | 36.0 | 31.2 |
| Stand Model | ZHP351 | 119 | 29.5 | 42.8 | 11.4 | 1 1/4" | 38 | 40.6 | 35.1 |
| Stand Model | ZHP400 | 132.1 | 29.5 | 52.8 | 11.4 | 1 1/4" | 38 | 45.0 | 39.0 |
| Stand Model | ZHP451 | 158.5 | 29.5 | 61.5 | 11.4 | 1 1/4" | 38 | 54.0 | 46.8 |

■ zilmet well tank sizing chart

| Gallons per Minute | 30/50 psig | | 40/60 psig | |
|--------------------|------------|------------|------------|------------|
| | 1 min | 2 min | 1 min | 2 min |
| 5 | ZHP202 | ZHP203 | ZHP202 | ZHP203 |
| 10 | ZHP203 | ZHP251 | ZHP204 | ZHP302 |
| 12 | ZHP204 | ZHP302 | ZHP250 | ZHP302 |
| 15 | ZHP250 | ZHP302 | ZHP251 | ZHP351 |
| 20 | ZHP251 | ZHP351 | ZHP302 | ZHP302 (2) |
| 25 | ZHP302 | ZHP302 (2) | ZHP350 | ZHP350 (2) |
| 30 | ZHP350 | ZHP350 (2) | ZHP351 | ZHP351 (2) |
| 35 | ZHP351 | ZHP351 (2) | ZHP351 | ZHP351 (2) |

* Use this chart to properly size your well tank to prevent excessive wear and tear on your well pump and to reduce energy consumption. (2) indicates - two tanks required.

■ technical drawings

