



Hydronic Expansion Tanks: Vertical RDT Series ASME

125 PSIG Working Pressure

Construction

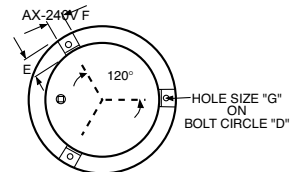
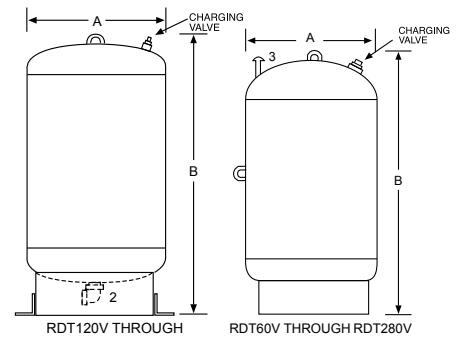
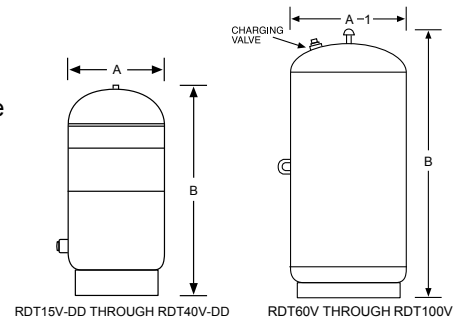
Shell	ASME Approved Steel
Diaphragm	Heavy Duty Butyl/EPDM
System Connection	NPTF ¹ Malleable Iron Center NPTF ² Malleable Iron Bottom NPTM ³ Malleable Iron Top Offset
Finish	Red Oxide Primer
Air Valve	Schrader Valve w/EPDM Seats
Factory Precharge	12 PSIG (.8 bar)

Performance

Maximum Operating Temperature	240°F (115°C)
Maximum Working Pressure	125 PSIG (8.6 bar)
Warranty	1-Year

Application

- For use in closed, non-potable hydronic heating and chilled water systems.
- Designed to meet all ASME Code Section VIII, Division 1 standards.
- Available with optional sight glass and seismic restraints.
- Suitable in propylene glycol applications with mixtures up to 50%.
- Deep drawn models are lighter, stronger and more compact than traditional head and shell construction.



BOTTOM VIEW

Deep Drawn Vertical ASME Models

Model Number	Tank Volume		Max. Accept. Volume		A Tank Diameter		B Tank Height		Sys. Conn	Shipping Weight	
	Gal	Lit	Gal	Lit	In	mm	In	mm	In	Lbs	Kg
RDT-15V-DD	8.6	33	3.2	12.1	12	305	22	559	3/4"1	24	11
RDT-20V-DD	16.5	63	11.3	43	15	381	25	636	3/4"1	46	21
RDT-40V-DD	23	88	11.3	43	15	381	33	838	3/4"1	66	30

Head & Shell Horizontal ASME Models

Model Number	Tank Volume		Max. Accept. Volume		A Tank Diameter		B Tank Height		Sys. Conn	Shipping Weight	
	Gal	Lit	Gal	Lit	In	mm	In	mm	In	Lbs	Kg
RDT-60V	33.6	127.2	11.3	42.8	16	356	45	1143	1/2"1	98	44
RDT-80V	44.4	168.1	22.6	85.5	24	610	29	737	1"1	155	70
RDT100V	55.7	211.8	22.6	85.5	24	610	34	863	1"1	176	80
RDT120V	68.0	257.4	34.0	128.7	24	610	47	1194	1"2	214	97
RDT144V	77.0	291.5	34.0	128.7	24	610	52	1321	1"2	230	104
RDT180V	90.0	340.7	34.0	128.7	24	610	60	1524	1"2	271	123
RDT200V	110.0	416.4	34.0	128.7	24	610	66	1676	1"2	290	132
RDT240V	132.0	500.0	46.0	174.0	30	762	58	1473	1"2	401	182
RDT260V	159.0	600.0	56.0	212.0	30	762	65	1651	1"4"3	460	209
RDT280V	211.0	800.0	84.0	318.0	30	762	82	2083	1"4"3	590	268

All dimensions and weights are approximate.

Optional Seismic Restraints

Tank Diameter	Bolt Circle	Dim. E	Dim. F	Hole Size G
B	D	E	F	G
12	12 3/4	2	2	3/16
16 1/4	14 3/4	2	2	3/16
24	18	2	2	3/16
30	27	3	3	3/4

Job Name _____	Notes _____
Engineer _____	_____
Contractor _____	_____
P.O. No. _____	_____
Sales Rep. _____	_____
Model No. _____	_____

