

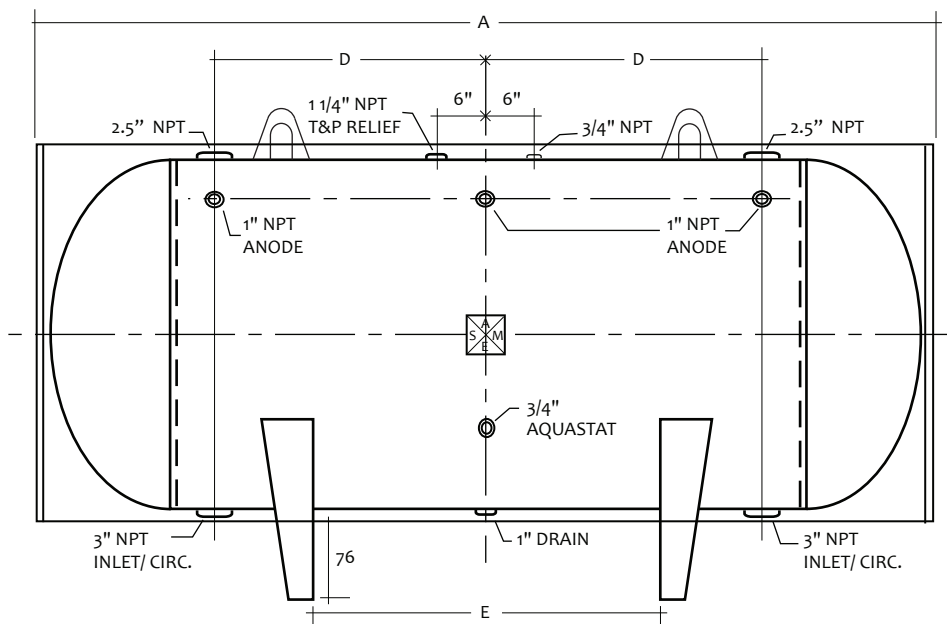
# MODEL # RWUH-30-099

## Design Notes

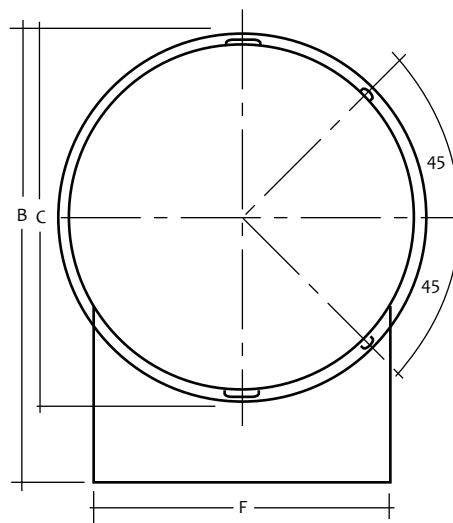
Code..... ASME Sec IV HLW  
 Design Pressure..... 125 psi  
 Test Pressure.....125 psi  
 Interior.....Glass Lining  
 Exterior.....Baked Enamel Steel Jacket  
 Insulation..... 2" R-12 Open cell foam  
 Supports.....Saddles  
 Capacity.....280 Gal. / 303 nominal  
 Weight..... 728 Lbs.

## Material Specifications

Heads..... Carbon Steel  
 Shell..... Carbon Steel  
 Jacket..... 24 Gauge Steel  
 Couplings..... Carbon Steel  
 Flanges..... N/A  
 Pipe..... N/A  
 Manway..... N/A



HORIZONTAL STORAGE TANK



Mark	Dimension	Remark	NOTES
A	103"	Overall length	PROJECT
B	41"	Overall height	CUSTOMER
C	34"	Diameter	SCALE Not to Scale
D	36"	Circulation	DATE
E	48"	Supports	CUSTOMER P.O. #
F	26.38"	Support width	DRAWING Rev NO.